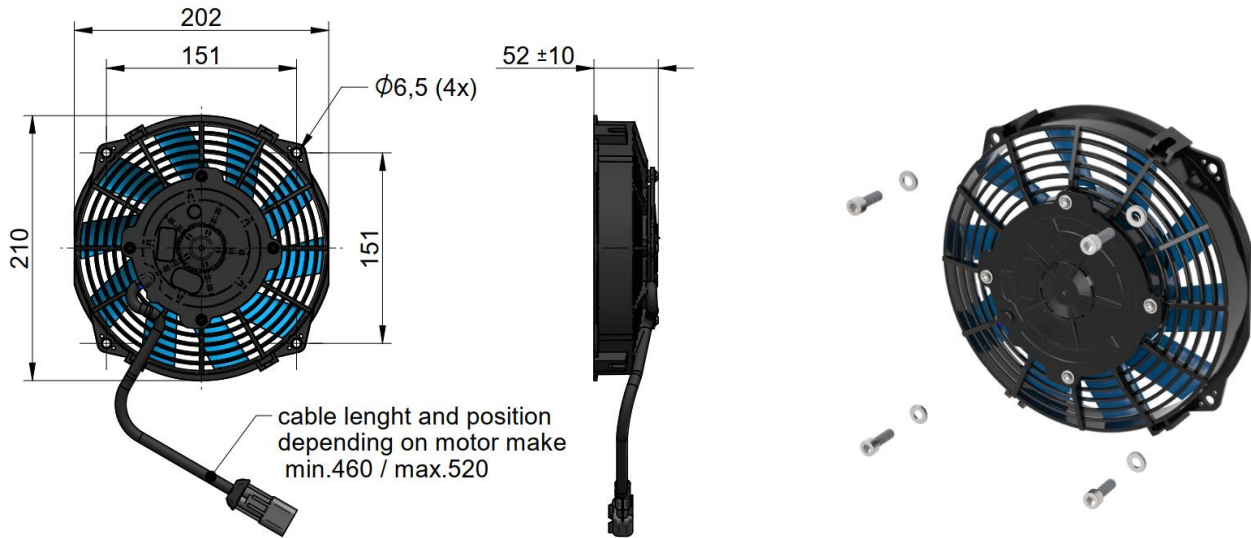


fan kit LL 04, 12V / 24V DC for oil/air blast coolers LL 04

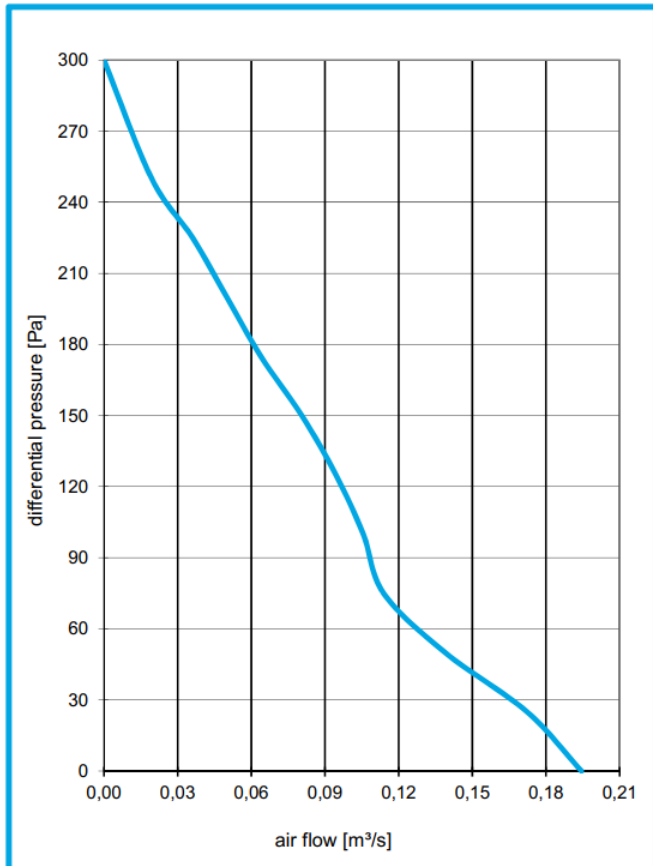


Technical Data *)

order number	description	current**) [A]	motor power [W]	protection level	weight [kg]
ILLELE1434A1	fan kit LL 04 12V DC	8	104	IP 68	0,94
ILLELE1434A2	fan kit LL 04 24V DC	4	104	IP 68	0,94

**) given data are running currents, free air flow, for start up higher currents have to be calculated!

Performance Data



ambient conditions

ambient temperature range -20°C to +70°C

storage temperature range -30°C to +90°C

Important: Assure sufficient air circulation!

connection typ fast-on

supply

12V DC ± 10% 24V DC ± 10%

maximum allowed ripple 1%

Check for right polarity! Inverse polarity may damage the fan!

fuse

The specification of the fuse has to be chosen to suit to the actual used components and applying system parameters.

housing

material polymer

accessories

temperature control ILLZTC12-2K, ILLZTC24-2K

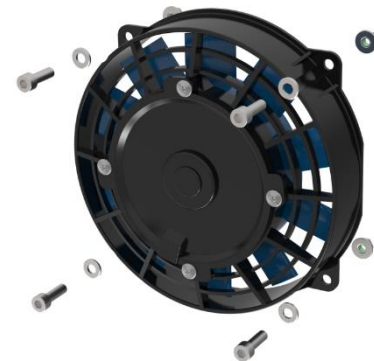
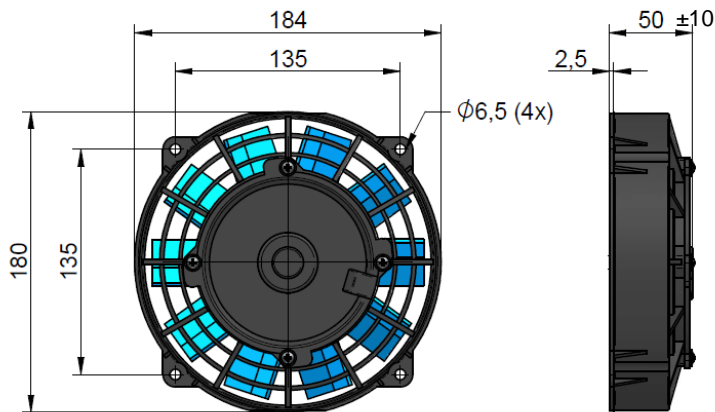
content of fan kit

1x fan unit, 4x screws, 4x washer, 1x counter connector

*) all data refer to tests with 13V and 26V DC, respectively

Please contact us for further options and assistance.

fan kit LL 02, 12V / 24V DC for oil/air blast coolers LL 02

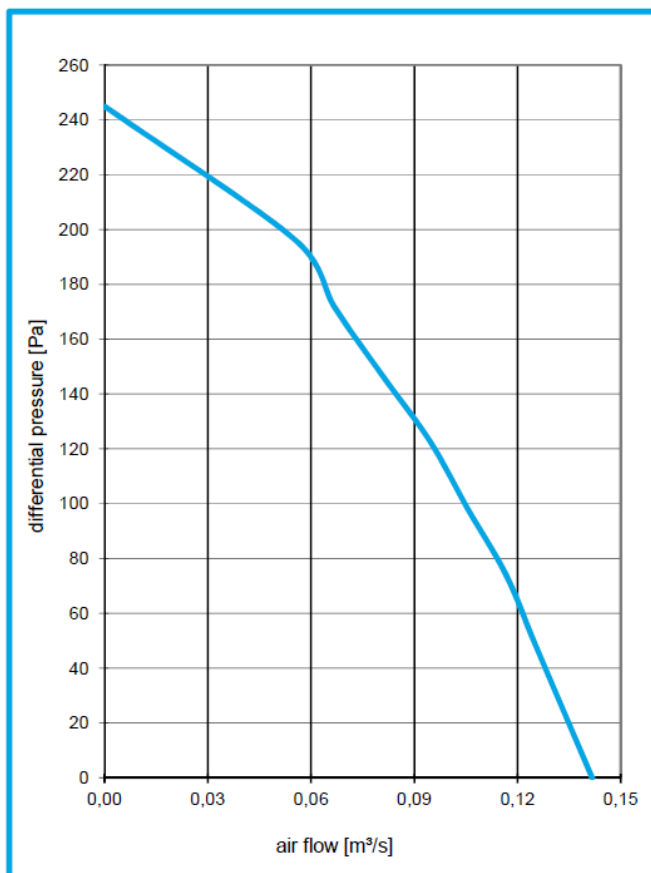


Technical Data *)

order number	description	current ^{**}	motor power	protection level	weight
		[A]	[W]		[kg]
ILLELE2250A1	fan kit LL 02 12V DC	5,5	72	IP 68	0,8
ILLELE2250A2	fan kit LL 02 24V DC	2,4	63	IP 68	0,8

^{**}) given data are running currents, free air flow, for start up higher currents have to be calculated!

Performance Data



ambient conditions

ambient temperature range	-20°C to +80°C
storage temperature range	-30°C to +80°C
Important: Assure sufficient air circulation!	
connection typ	fast-on

supply

12V DC ± 10%	24V DC ± 10%
maximum allowed ripple	1%

Check for right polarity! Inverse polarity may damage the fan!

fuse

The specification of the fuse has to be chosen to suit to the actual used components and applying system parameters.

housing

material	polyamide
----------	-----------

accessories

temperature control	ILLZTC12-2K, ILLZTC24-2K
---------------------	-----------------------------

content of fan kit

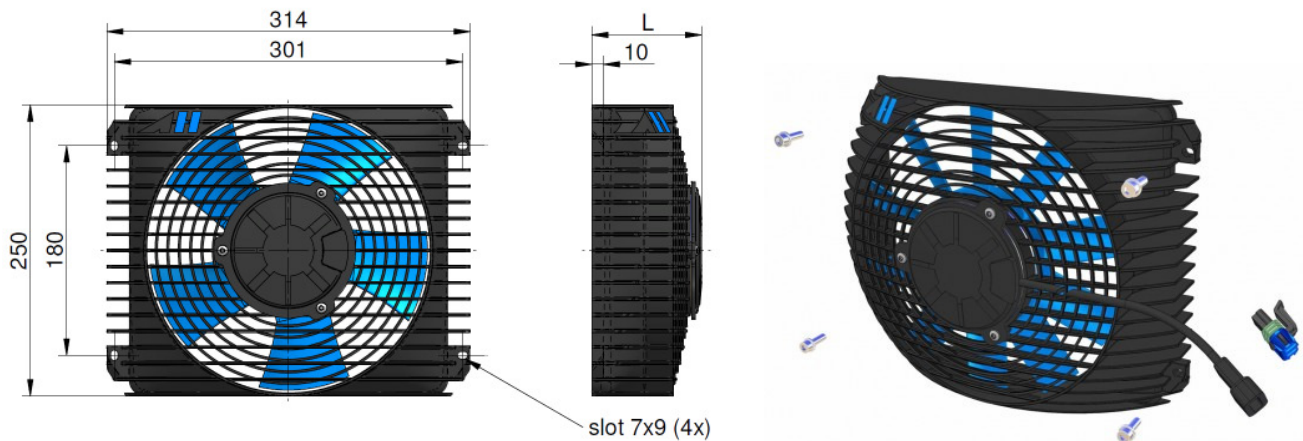
1x fan unit, 4x screws, 4x screw nuts, 4x washer

^{*}) all data refer to tests with 13V and 26V DC, respectively

Please contact us for further options and assistance.

fan kit 0240, 12V / 24V DC

for oil/air blast coolers TT 06, TT 07

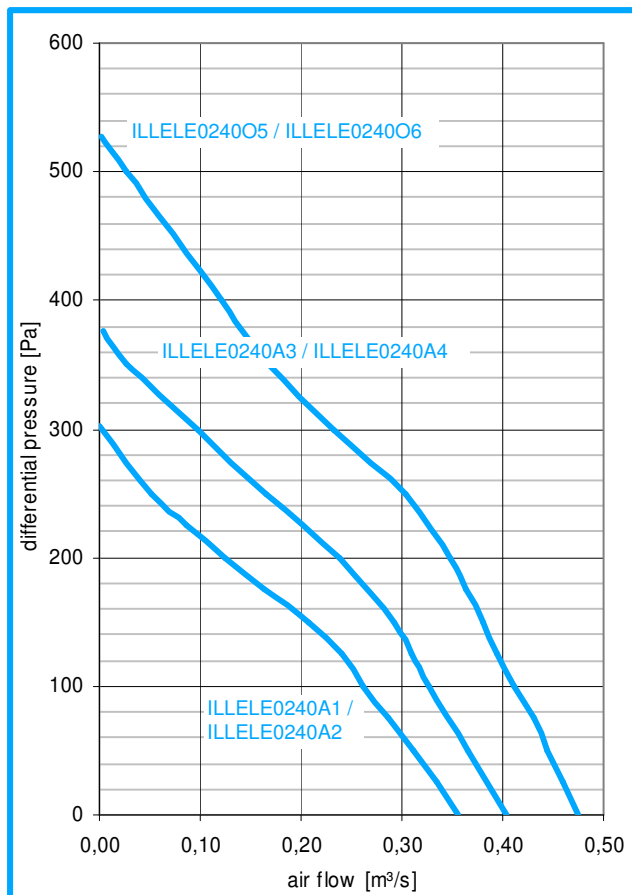


Technical Data ^{*)}

order number	description	current ^{*)} [A]	motor power [kW]	protection level	L [mm]	weight [kg]
ILLELE0240A1	fan kit 0240, TT 06, 12V	7,4	0,096	IP 68	93	1,53
ILLELE0240A2	fan kit 0240, TT 06, 24V	3,7	0,096	IP 68	93	1,53
ILLELE0240A3	fan kit 0240, TT 07, 12V	10,4	0,135	IP 68	93	2,03
ILLELE0240A4	fan kit 0240, TT 07, 24V	5,2	0,135	IP 68	93	2,03
ILLELE0240O5	fan kit 0240, TT 07 HP, 12V	16,2	0,211	IP 68	110	2,50
ILLELE0240O6	fan kit 0240, TT 07 HP, 24V	8,1	0,211	IP 68	110	2,50

^{*)} given data are running currents, for start up 3x higher current has to be calculated!

Performance Data



ambient conditions

ambient temperature range -20°C to +80°C

storage temperature range -40°C to +120°C

Important: Assure sufficient air circulation!

supply

12V DC ± 10% 24V DC ± 10%

maximum allowed ripple 1%

Check for right polarity! Inverse polarity may damage the fan!

recommended fuse (slow acting)

ILLELE0240A1 10 A

ILLELE0240A2 5 A

ILLELE0240A3 15 A

ILLELE0240A4 7,5 A

ILLELE0240O5 20 A

ILLELE0240O6 10 A

housing

material polyamide

accessories

temperature control ILLZTC12K, ILLZTC24K

content of fan kit

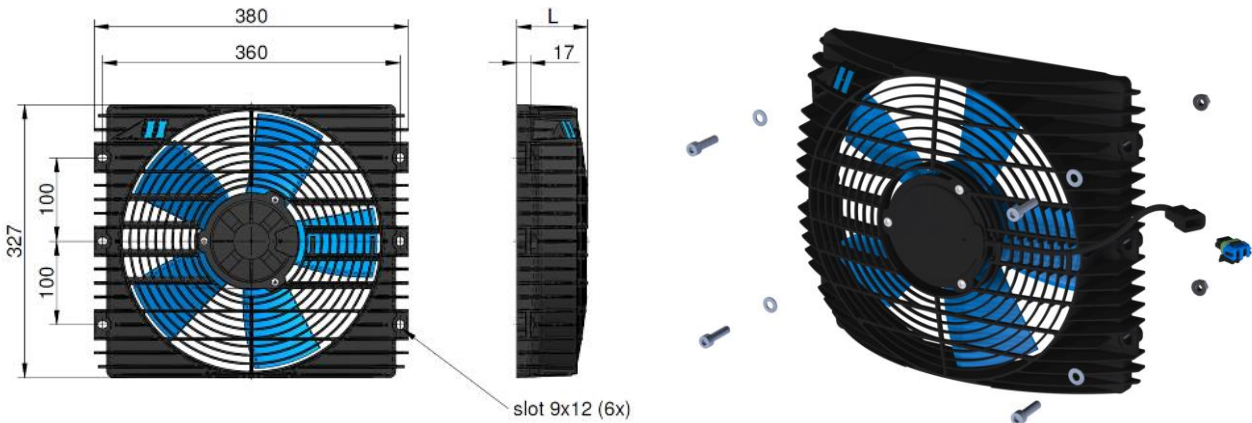
1x fan unit, 4x screws, 4x washer, 1x counter connector

^{*)} all data refer to tests with 13V and 26V DC, respectively

Please contact us for further options and assistance.

fan kit 0295, 12V / 24V DC

for oil/air blast coolers ASA 0075/0115/0257/0367, ECO 07/11, TT 11

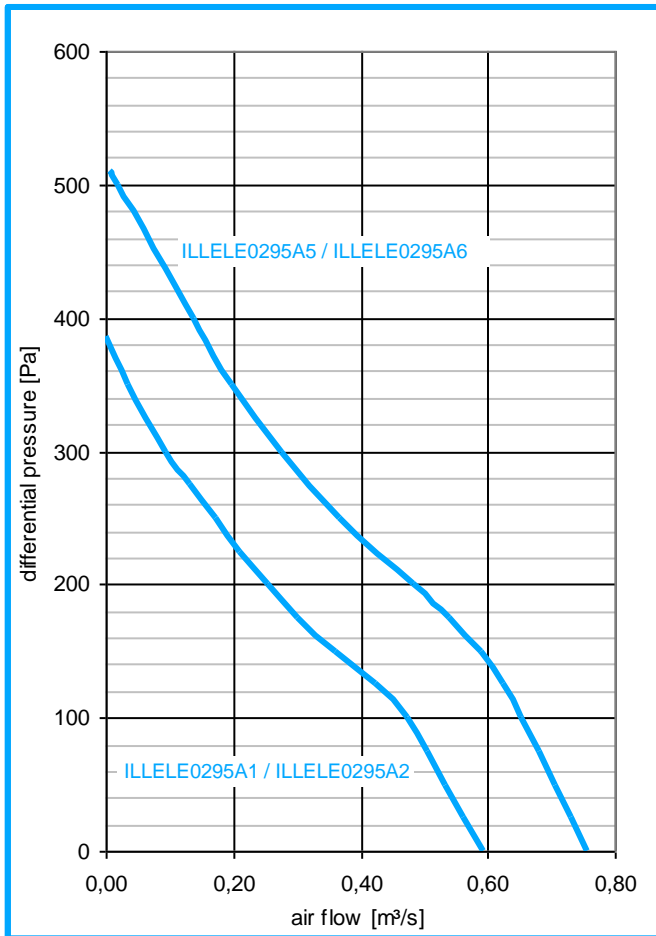


Technical Data ^{*)}

order number	description	current ^{**) [A]}	motor power [kW]	protection level	L [mm]	weight [kg]
ILLELE0295A1	fan kit 0295, 12V DC	15,4	0,20	IP 68	90	2,95
ILLELE0295A2	fan kit 0295, 24V DC	7,7	0,20	IP 68	90	2,95
ILLELE0295A5	fan kit 0295, HP 12V DC	20,8	0,27	IP 68	110	3,10
ILLELE0295A6	fan kit 0295, HP 24V DC	10,4	0,27	IP 68	110	3,10

^{**) given data are running currents, for start up 3x higher current has to be calculated!}

Performance Data



ambient conditions

ambient temperature range -20°C to +80°C

storage temperature range -40°C to +120°C

Important: Assure sufficient air circulation!

supply

12V DC ± 10% 24V DC ± 10%

maximum allowed ripple 1%

Check for right polarity! Inverse polarity may damage the fan!

recommended fuse (slow acting)

ILLELE0295A1 20 A

ILLELE0295A2 10 A

ILLELE0295A5 25 A

ILLELE0295A6 15 A

housing

material polyamide

accessories

temperature control ILLZTC12K, ILLZTC24K

content of fan kit

1x fan unit, 4x screws, 4x screw nuts, 4x washer, 1x counter connector

^{*) all data refer to tests with 13V and 26V DC, respectively}

Please contact us for further options and assistance.

This data sheet shows a technical overview of our products. Please contact us if more exact information is needed. As we are constantly improving our products, their characteristics, dimensions and weights may also change, although we do our best to incorporate these changes continually. The information in this data sheet is intended to be used as a first general guideline only. asa assumes no liability for any information therein, any errors, omissions, misprints, nor any direct or indirect damages, losses or costs resulting therefrom. The cooling performance and the general technical values indicated in this catalogue are measured at a test bench according to asa testing procedures. Because there is no standardized testing procedure, tests used by other manufacturers could have different results. Due to different conditions in testing and application environments the cooling performance may also vary by +/- 15%. Therefore we recommend all coolers to be checked under the system operating conditions. This is also true of vibrations and mechanical stress as well as for pressure peaks and thermal stress and any other relevant factors.

