

CONNECTING THE INDUSTRY

ROTAPOINT® COUPLINGS ●



THE PERFECT CONNECTION BETWEEN ROTATING
HOSES AND STATIONARY PARTS

ROTAPOINT® COUPLINGS

WHAT IS A ROTAPOINT® COUPLING?

The ROTAPOINT® swivel prevents torsion in the hose and extends the life time of the hose up to 20 times. It allows free hose movement without imparting torque stresses to the hose assembly.

The hose swivel is designed to endure a wide range of temperatures and pressures for a variety of different fluids.



HOW DOES IT WORKS?

The rotating coupling is assembled on both ends of the hose.

During service, the hose is held under pressure. The swivel will avoid the torsion in the hose due to movement.

This will prevent one of the biggest causes of premature hose failure.

VALUE PROPOSITION

Longer life of your hoses and other parts

No machine failure , cost decrease, durability of hoses and other piping = peace of mind

Applicable on all type of hoses

MARKETS

The ROTAPOINT® swivel coupling can be used on all types of hoses such as stainless steel, PTFE, rubber, silicon and plastic hoses in all types of industry and applications.

FEATURES & BENEFITS

FEATURES

- Different materials available
- Speed
- Simple design
- Wear identification
- Configurable
- Gasket technology
- Compatible with fittings
- Lubrication option
- Life time calculation

BENEFITS

- 100% solution for failures
- Safety wear control
- Long life
- Low maintenance
- Full range of sizes, materials and connections
- Always fit and adaptable
- Easy installation
- Wide temperature range
- Compact design



PERFORMANCE RANGE*

Pressure

up to 40
bar

Speed

up to 40
rpm

Temperature

-20°C up to
180°C

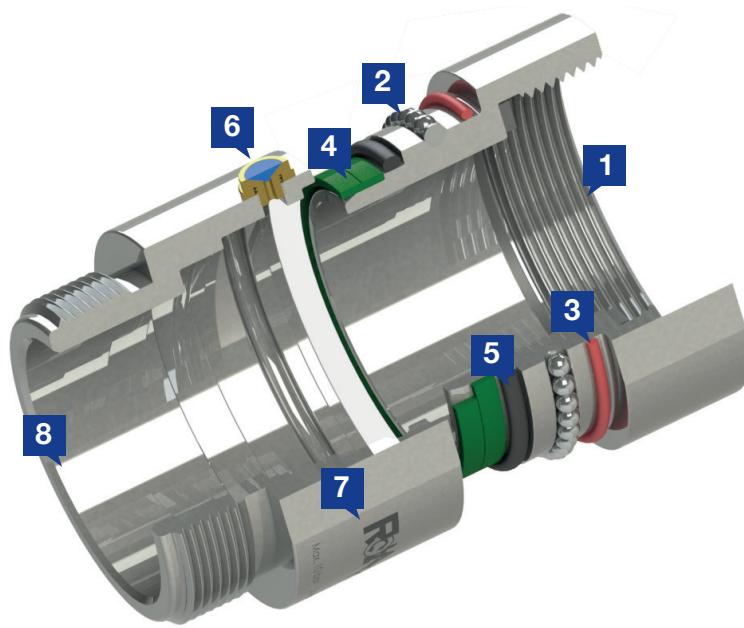
Torque

Low



* Performance will depend on material and size.
Detailed charts available on request

PRODUCT SCOPE



- 1** Female thread, flat sealed
- 2** Hardened SS440C ball bearings
- 3** Wear identification silicon dust protection
- 4** Stabilisation gliding strips self lubricated
- 5** Precision sealing ring, low friction
- 6** Grease nipple
- 7** Performance and traceability marking
- 8** Male thread, flat sealed with extended head

TECHNICAL SPECS

Material: Extra strong aluminium / SS316 / Brass / Hastelloy

Seal: NBR / EPDM / FPM / Kalrez® / PUR

Sizes: 1/2" / 3/4" / 1" / 1-1/4" / 1-1/2" / 2" / 2-1/2" / 3" / 4"

Threads: BSP / BSPT / NPT

Shaft connections: fem. x fem. / male x male / male x fem. / male x fem. 90° / male x male 90° / fem. x fem. 90°

HOW TO ORDER?

Size	Ref.	Material	Ref	Seal material	Ref	Type of thread	Reference
1/2"	12	SS 316*	SS	NBR	N	BSP Male**	B
3/4"	19	Brass*	BR	EPDM	E	BSP Female**	F
1" *	25	ALU7075*	A5	FPM*	V	BSPT Male	T
1-1/4"	32	Hastelloy	HS	Kalrez®	K	NPT Male	N
1-1/2"	38			PUR	P	NPT Female	P
2" *	50					90° Elbow	90
2-1/2"	65						
3" *	75						
4"	100						

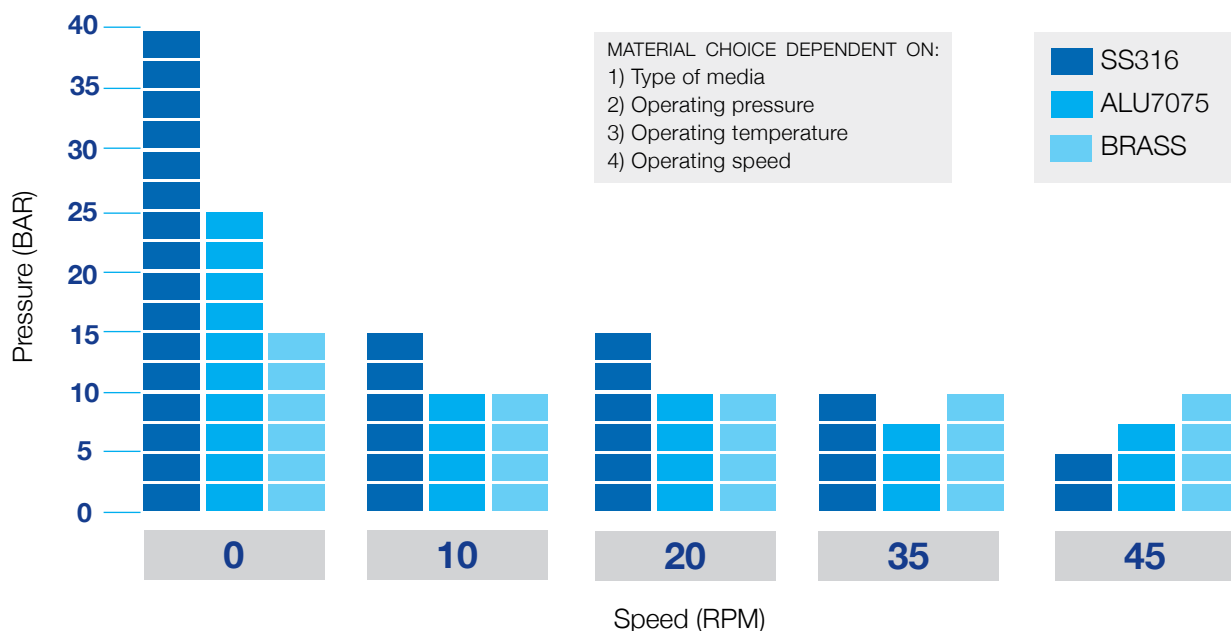
EXAMPLE: ROTAPOINT 050 A5 V BF90

* Standard (others on request)

** BSP male - BSP female is the standard configuration

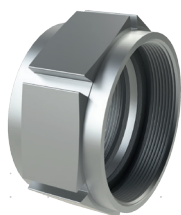
ROTAPOINT® COUPLINGS

HOW DO I CHOOSE THE BEST ROTAPOINT® FOR MY APPLICATION?



ACCESSORIES

The rotating unions and their different accessories are available in the corresponding materials. They make numerous configurations possible. Including radial flow, when applying 90° elbows. advices to use only the original ROTANIP and ROTABOW accessories for your peace of mind.



2543



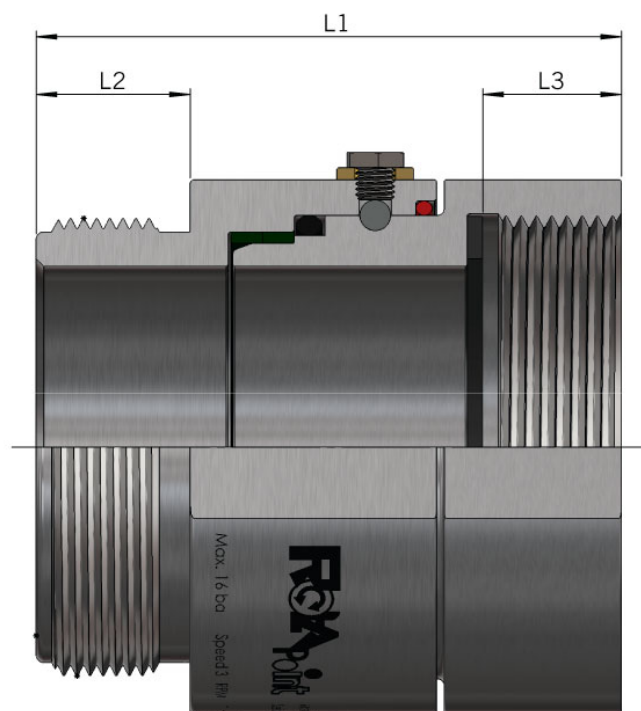
2501/2511



2013



2020



Tabel 1: Swivel Rotapoint®

Gänga-	Arbetsstryck	Varvtal (RPM)	Total längd (L1)	Inskruvning Längd (L2)	Längd Innergänga (L3)
Tum	bar	per min.	mm	mm	mm
1/2"	25	40	55	12	11
3/4"	25	40	55	14	11
1"	25	40	57	14	11
1 1/2"	20	35	67	18	14,5
2"	16	30	70	20	16
3"	10	30	105	24	19,5
4"	10	20	131	25	19

Data för Syrafast svivel