

F17

General purpose filter

- Port size: 3/4" ... 1 1/2" (ISO G, PTF)
- Direct ported filters with high water removal efficiency
- High flow with minimal pressure drop
- Optional visual service indicator turns from green to red when the filter element needs to be cleaned or replaced



Technical features

Medium:
Compressed air

Maximum operating pressure:
17 bar (246 psi)

Particle removal:
40 µm standard; 5 µm optional

Flow:
See below

Port size:
3/4", 1", 1 1/4" or 1 1/2"

Drain:
Automatic or manual

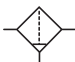

Automatic drain operating conditions (float operated):
Bowl pressure required to close drain: > 0,35 bar (5 psi)
Bowl pressure required to open drain: ≤ 0,2 bar (2.9 psi)

Minimum air flow required to close drain: 0,1 dm³/s (0.2 scfm)
Manual operation: depress pin inside drain outlet to drain bowl.

Fluid/Ambient temperature:
-20 ... +80°C (0 ... +176°F)
Air supply must be dry enough to avoid ice formation at temperatures below +2°C (+35°F).

Materials:
Body and bowl: DieCast Aluminum
Bowl sight glass: Pyrex
Filter element: Short bowl: Polypropylene
Long bowl: Brass
Elastomers: NBR

Technical data, standard models

Symbol	Port size	Filter element (µm)	Flow *1) (dm ³ /s)	Drain	Weight (kg)	Model
	G3/4	40 µm	183	Manual	1,95	F17-600-M3HG
	G1	40 µm	236	Manual	1,90	F17-800-M3HG
	G1 1/4	40 µm	236	Manual	2,01	F17-A00-M3HG
	Rp1 1/2	40 µm	236	Manual	1,97	F17-B00-M3HC
	G3/4	40 µm	183	Automatic	1,93	F17-600-A3HG
	G1	40 µm	236	Automatic	1,88	F17-800-A3HG
	G1 1/4	40 µm	236	Automatic	1,99	F17-A00-A3HG
	Rp1 1/2	40 µm	236	Automatic	1,95	F17-B00-A3HC

*1) Typical flow with a 40 µm element at 6,3 bar (90 psi) inlet pressure and 0,5 bar (7 psi) pressure drop.

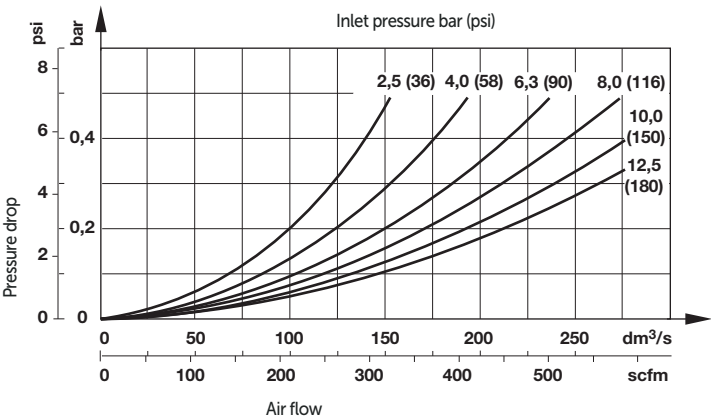
Options selector

F17-★00-★★★★

Port size	Substitute	Thread	Substitute
3/4"	6	PTF	A
1"	8	ISO Rp (1 1/2" ported units only)	C
1 1/4"	A	ISO G parallel (not available with 1 1/2" ported units)	G
1 1/2"	B		
Drain	Substitute	Bowl	Substitute
Automatic	A	1,0 l metal with sight glass	D
Manual	M	1,0 l metal	M
		0,5 l with sight glass (standard)	H
		Filter element	Substitute
		5 µm	1
		40 µm (standard)	3

Flow characteristics

Port size 1", 40 µm filter element



Accessories

Wall mounting bracket

Port size

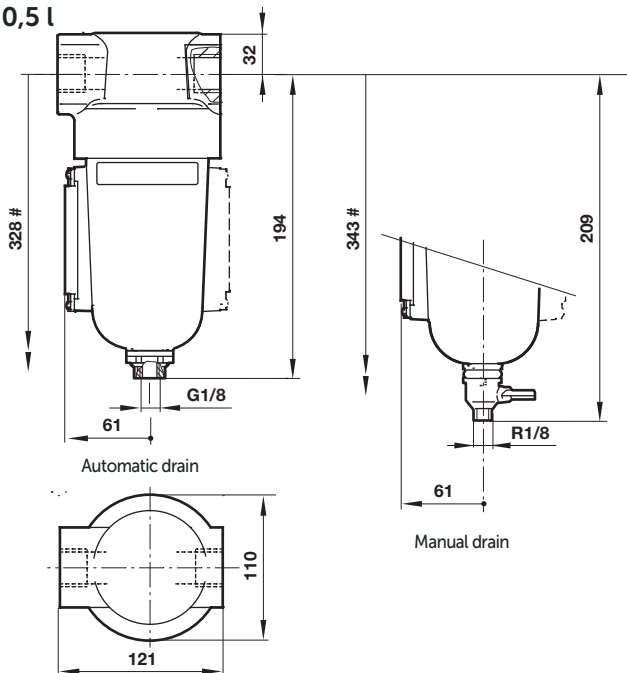
3/4"	6212-50
1"	6212-50
1 1/4"	6212-51
1 1/2"	6212-51

Service kit

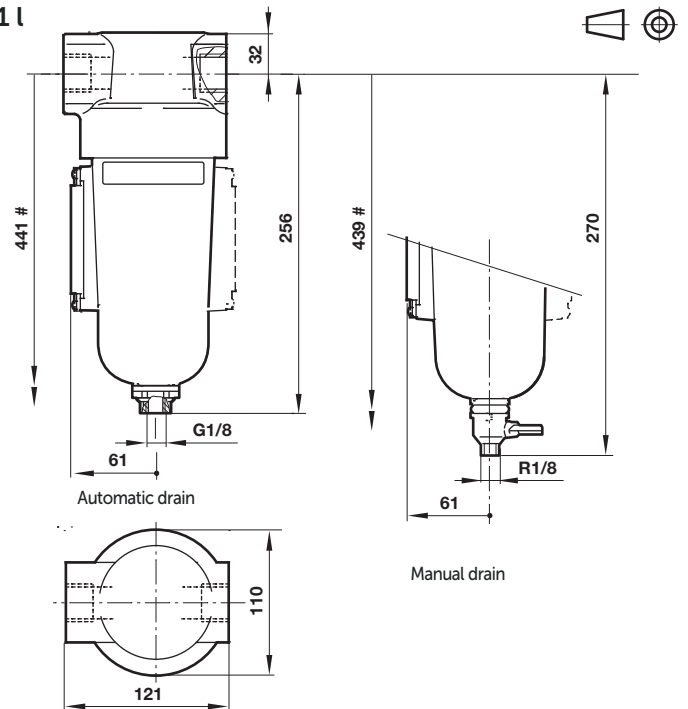
Service kit 'O'-rings and gaskets and manual drain	Replacement elements Filter element short (Standard)	Filter element long	Service drain kits
5578-05	5 µm: 5576-01 40 µm: 5576-03	5311-01 5311-03	F17-100A F17-100M

Dimensions

0,5 l



1 l



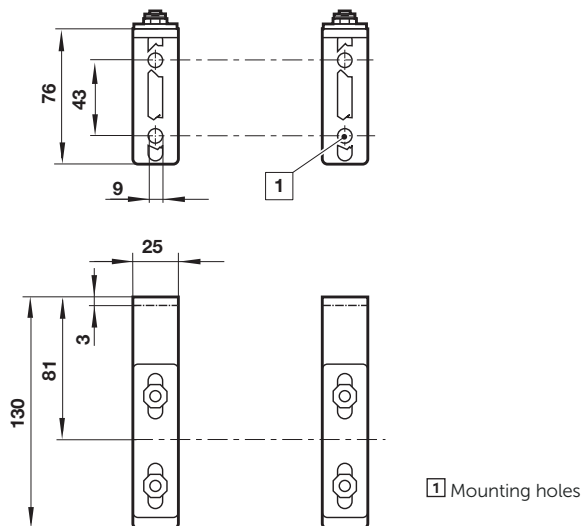
Dimensions in mm
Projection/First angle



Min clearance required to remove bowl.

Wall mounting brackets

6212-50, 6212-51



Warning

These products are intended for use in industrial compressed air systems only. Do not use these products where pressures and temperatures can exceed those listed under »Technical features/data«.

Before using these products with fluids other than those specified, for non-industrial applications, life-support systems or other applications not within published specifications, consult Norgren.

Through misuse, age, or malfunction, components used in fluid power systems can fail in various modes.

The system designer is warned to consider the failure modes of all component parts used in fluid power systems and to provide adequate safeguards to prevent personal injury or damage to equipment in the event of such failure.

System designers must provide a warning to end users in the system instructional manual if protection against a failure mode cannot be adequately provided.

System designers and end users are cautioned to review specific warnings found in instruction sheets packed and shipped with these products.