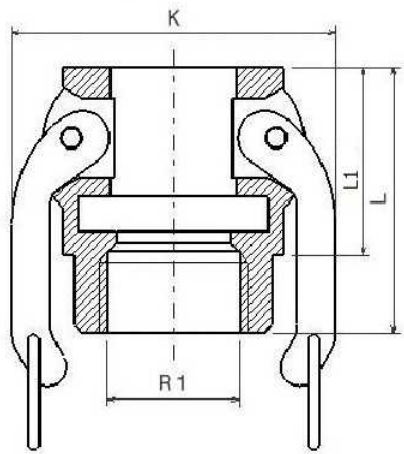


Autolock, female, BSP female threaded Type D

Stainless Steel AISI 316



AUTOLOCK
SYSTEM



Norms: Male thread according to EN10226-1
Female thread according to ISO 228-1
PN: 1/2 "- 4" 250 PSI ----- 5 "- 6" 75 PSI

Part nº	DN	R1	L	L1	K
ZD012S	12	1/2"	43	29	54
ZD020S	20	3/4"	46	29	69
ZD025S	25	1"	62	40	61
ZD032S	32	1"1/4	68	48	79
ZD040S	40	1"1/2	65	45	99
ZD050S	50	2"	78	54	94
ZD065S	65	2"1/2	85	59	109
ZD080S	80	3"	90	60	130
ZD100S	100	4"	96	62	158

The dimensions in micro-casting parts are approximated in those elements without mechanization.
NBR gasket