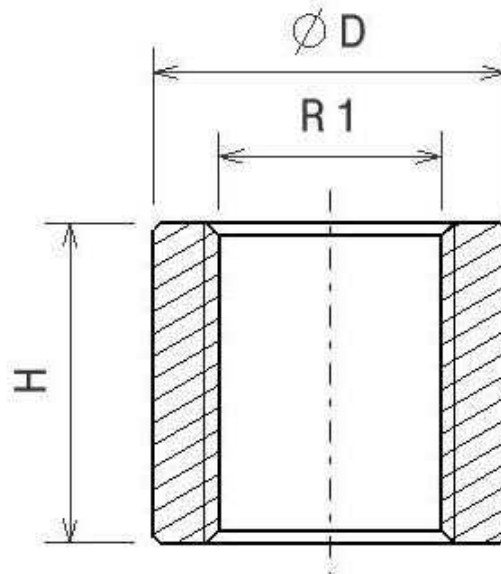


BSP Female coupling DIN 2986 FIG.270

Stainless Steel AISI 316



Norms: Male thread according to EN10226-1
 Female thread according to ISO 228-1

PN: 1/2" - 2": 17,6 Bar --- 2 1/2"- 3": 14 Bar --- 4"- 6": 7 Bar

Part n°	R1	ØD	H
ZFIG27004	1/4"	18,5	25
ZFIG27006	3/8"	21,3	26
ZFIG27008	1/2"	26,4	34
ZFIG27012	3/4"	31,8	36
ZFIG27016	1"	39,5	43
ZFIG27020	1"1/4	48,3	48
ZFIG27024	1"1/2	54,5	48
ZFIG27032	2"	66,3	56
ZFIG27040	2"1/2	82	65
ZFIG27048	3"	95	71
ZFIG27060	4"	122	83

The dimensions in micro-casting parts are approximated in those elements without mechanization.