

-5°C ÷ 70°C



from 0 to 10 Bar



Compressed air, lubricated compressed air, various gases compatible with construction materials (except gases which can be dangerous for people and things).



**1610:** Parallel gas BSPP ISO 228 from G1/8" to G3/4"  
Metric ISO 262 M5  
**1620:** NPT from N1/8" to N1/2"



**Body:** Brass CW614N chrome plated  
**Slider:** Blue anodized aluminum  
**O'Ring:** NBR 70  
**Elastic ring:** Steel



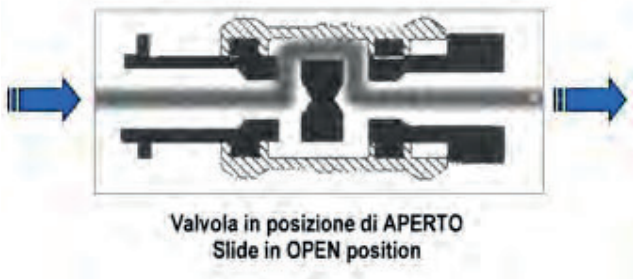
Products in compliance with the directive 2002/95/EC

**RoHS2**

Products in compliance with the directive 2011/65/EU

**DIRECTION OF THE FLOW**

Indication of the fluid direction engraved on the body.

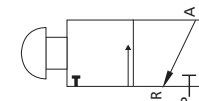


**FLOW RATE**

FLOW	M5	1/8	1/4	3/8	1/2	3/4
NI/min	100	680	1300	2100	3800	5700



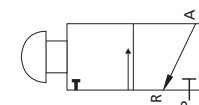
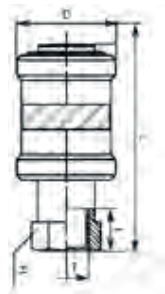
1610



Slide valve BSPP & metric thread

CODE	T	D	I	L	H	GR.
1610TRM5	M5	14	5,0	30,5	10	11
1610TR18	G1/8"	25	9,0	48,0	14	51
1610TR14	G1/4"	30	11,5	58,0	19	98
1610TR38	G3/8"	35	12,0	70,0	22	156
1610TR12	G1/2"	40	15,0	75,0	27	212
1610TR34	G3/4"	50	16,5	83,0	32	317

1620



Slide valve NPT thread

CODE	T	D	I	L	H	GR.
1620TR18	N1/8"	25	8	55,5	14	51
1620TR14	N1/4"	30	11	69,0	19	98
1620TR38	N3/8"	35	12	81,5	22	156
1620TR12	N1/2"	40	15	90,0	27	212





-5°C ÷ 70°C



from 0 to 10 Bar



Compressed air, lubricated compressed air, various gases compatible with construction materials (except gases which can be dangerous for people and things).



Parallel gas BSPP ISO 228 from G1/4" to G1/2"



Indication of the fluid direction engraved on the body.



**Pin:** brass chrome plated

**Slider:** red painted aluminium

**Seals:** NBR 70

**Elastic ring:** stainless steel AISI 302

**Cursor:** brass chrome plated

**Spring:** stainless steel AISI 302

Available on demand with lockable



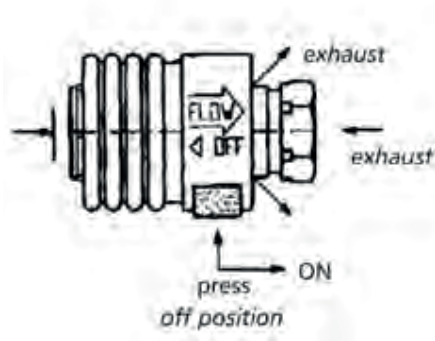
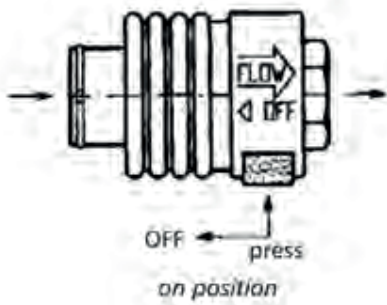
Products in compliance with the directive 2002/95/EC

**RoHS2**

Products in compliance with the directive 2011/65/EU

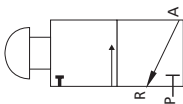
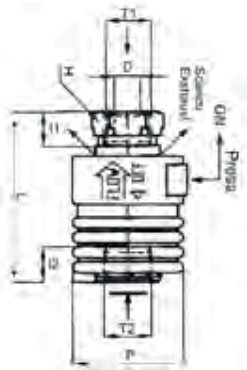
**SECURITY**

The double block system avoid the accidental valve opening or closing.



**1605**

Slide valve with security block BSPP thread



CODE	T1	T2	L	I1	I2	D	P	H	GR.
1605TR14	G1/4"	G1/4"	46	9,5	9,5	8	30	17	86
1605TR38	G3/8"	G3/8"	52	10,5	10,5	10	35	21	127
1605TR12	G1/2"	G1/2"	62	12,0	12,0	12,5	40	26	204

