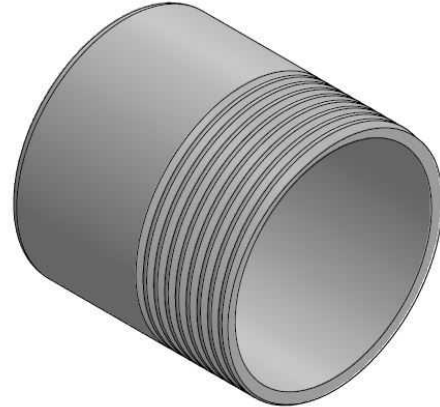
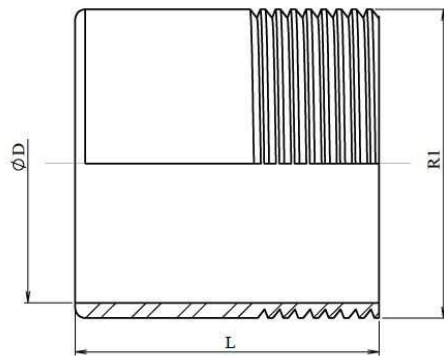


## Welding male fig.149

Stainless Steel AISI 316



**Norms:** Male thread according to EN10226-1  
Female thread according to ISO 228-1

**PN:** 1/2" - 2": 17,6 Bar --- 2 1/2"- 3": 14 Bar --- 4"- 6": 7 Bar

Part n°	R1	ØD	L
<b>ZFIG14904</b>	1/4"	13,7	30
<b>ZFIG14906</b>	3/8"	17,1	30
<b>ZFIG14908</b>	1/2"	21,3	35
<b>ZFIG14912</b>	3/4"	26,7	40
<b>ZFIG14916</b>	1"	33,4	40
<b>ZFIG14920</b>	1" 1/4	42,2	50
<b>ZFIG14924</b>	1" 1/2	48,3	50
<b>ZFIG14932</b>	2"	60,3	50

The dimensions in micro-casting parts are approximated in those elements without mechanization.