

# END PLATE

TYPE EB1...3 AND EB2...3

## BASE DI CHIUSURA

TIPO EB1...3 ED EB2...3



End plate / Base di chiusura

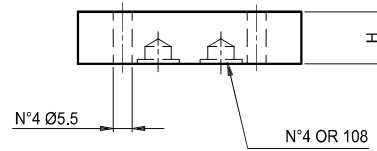
Weight / Peso

EB103 = 0.2 kg

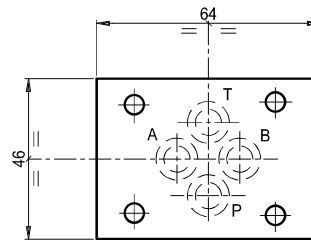
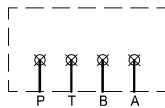
EB113 = 0.4 kg

EB103: Set of 16 pcs./EB103 confezione da 16 pezzi

EB113: Set of 8 pcs./EB103 par série de 16 pc.



Hydr. symbol  
schema idraulico



Ordering code

Esempio di ordinazione:



EUROFLUID

end plate / Base di chiusura = B1

CETOP 3

0 Height / altezza = 10

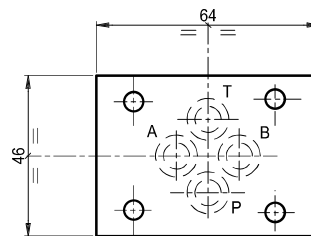
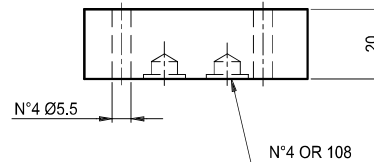
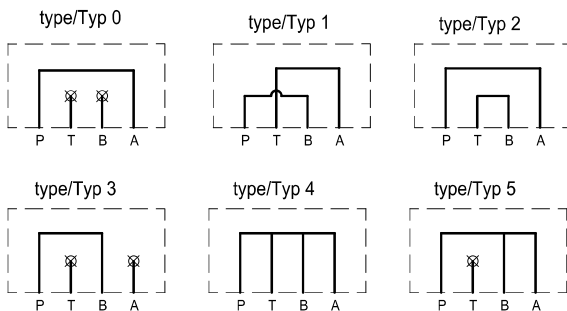
1 Height / altezza = 21

End plate / Base di chiusura e collegamento

Weight / Peso = 0.4 kg

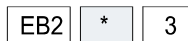
Set of 8 pcs. / Confezione da 8 pezzi

Hydraulic symbol  
Schema idraulico



Ordering code

Esempio di ordinazione:



EUROFLUID

end plate = B2

Base di chiusura e collegam. =

CETOP 3

0 - 1 - 2 - 3 - 4 - 5

see symbol - Vedere schemi