

SOLENOID VALVES PIV ON BASE

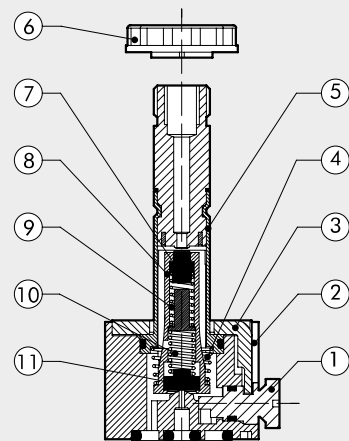
- PIV.I - PIV.T and PIV.B solenoid valves
- Assembly on base
- Bistable manual actuation
- Normally closed/normally open solenoid valves 2/2 – 3/2
- Installation in any position
- Particularly suitable for high operating frequencies and low response times



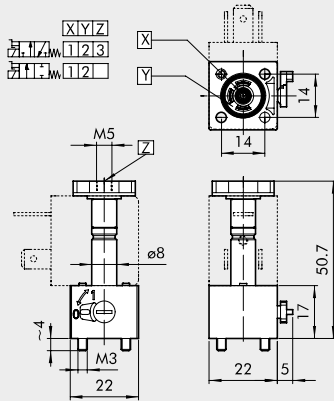
TECHNICAL DATA	PIV.I ON BASE	PIV.T ON BASE	PIV.B ON BASE
Absorption	5W - 5VA	3.8W - 6.5VA	10W - 13VA
Voltage available	12-24 VDC / 24-110-220 VAC	24VDC / 24-110-220 VAC	24VDC / 24-110-220 VAC
	50/60 Hz	50/60 Hz	50/60 Hz
Voltage tolerance	% -10 to +15	% -10 to +15	% -10 to +15
Max operating frequency	Hz 30	Hz 30	Hz 15
Solenoid rating	% 100	% 100	% 100
Response time	ms 8 to 15	ms 8 to 15	ms 10 to 15
Type of protection	IP 65	IP 65	IP 65
Type of coil	Coil side 22 Ø 8 DIN 43650	Coil side 22 Ø 9 DIN 43650	Coil side 30 DIN 43650
Insulation class	155	155	155
Ambient temperature	°C -15 to 50	°C -15 to 50	°C -15 to 50
Fluid temperature	°C -15 to 50	°C -15 to 50	°C -15 to 50
Fluid	Filtered lubricated or unlubricated air 25 million cycles	Filtered lubricated or unlubricated air 25 million cycles	Filtered lubricated or unlubricated air
Working life			-
Weight	g 80 to 120 (according to the version)	g 85	g 250
Maximum coil nut torque	Nm 1	Nm 1	Nm 1
Tightening torque M3 valve / base screws	Nm 0.8	Nm 0.8	Nm 0.8

COMPONENTS

- ① Manual control: technopolymer
- ② Body: technopolymer
- ③ Sleeve locking plate
- ④ Spring: stainless steel
- ⑤ Sleeve: brass OT 58
- ⑥ Ring nut for coil fixing
- ⑦ Gasket: NBR
- ⑧ Mobile core
- ⑨ Spring: stainless steel
- ⑩ Spring: stainless steel
- ⑪ Gasket: NBR

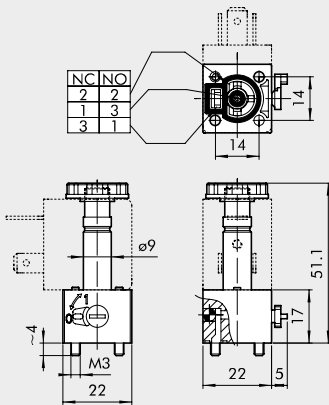


PIV.I VALVES, OPERATOR Ø 8, ON BASE



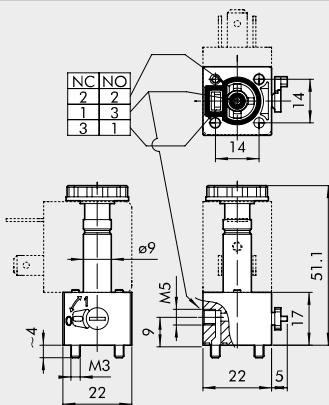
Symbol	Code	Abbrev.	Air hole Ø [mm]	kv Factor	Pressure range [bar]	
					DC	AC
	W4018000200	PIV42IOS NC	1.2	0.65	-0.99 to 10	-0.99 to 10
	W4018000300	PIV72IOS NC	1.5	1	-0.99 to 8	-0.99 to 8
	W4018001200	PIV43IOS NC	1.2	0.65	-0.99 to 10	-0.99 to 10
	W4018001300	PIV73IOS NC	1.5	1	-0.99 to 8	-0.99 to 8

PIV.T VALVES, OPERATOR Ø 9, ON BASE



Symbol	Code	Abbrev.	Air hole Ø [mm]	kv Factor	Pressure range [bar]	
					DC	AC
	W4025002101	PIV73TOB NO	1.6	0.75	0.5 to 7	0.5 to 7
	W4025002301	PIV83TOB NO	1.8	0.85	0.5 to 6.5	0.5 to 6.5
	W4025002100	PIV73TOB NC	1.6	0.8	0.5 to 10	0.5 to 10
	W4025002300	PIV83TOB NC	1.8	1	0.5 to 8	0.5 to 8

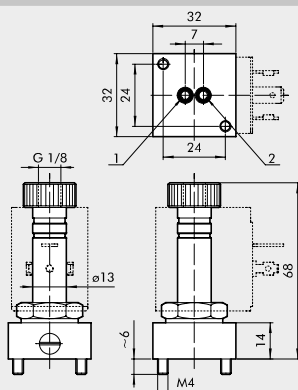
PIV.T VALVES, OPERATOR Ø 9, ON BASE WITH CONVEYED EXHAUST



Symbol	Code	Abbrev.	Air hole Ø [mm]	kv Factor	Pressure range [bar]	
					DC	AC
	W4025002001	PIV73T00 NO	1.6	0.75	0.5 to 7	0.5 to 7
	W4025002501	PIV83T00 NO	1.8	0.85	0 to 6	0.5 to 6.5
	W4025002000	PIV73T00 NC	1.6	0.8	0.5 to 10	0.5 to 10
	W4025002500	PIV83T00 NC	1.8	1	0.5 to 8	0.5 to 8

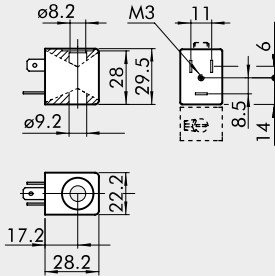
PIV.B VALVES, OPERATOR Ø 13, ON BASE

NORMALLY CLOSED



Symbol	Code	Abbrev.	Air hole Ø [mm]	kv Factor	Pressure range [bar]	
					DC	AC
	W4026003000	PIVY3B0S NC	2.4	2.2	0 to 8	0 to 10

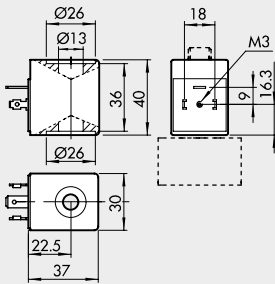
COILS, SIDE 22 mm FOR PIV.T SOLENOID VALVES, OPERATOR Ø 9



- Voltage tolerance: -10 to +15%
- Insulation class: F155
- Degree of protection: IP65 – EN60529 with connector
- Avoid prolonged exposure to the atmospheric agents
- Maximum coil temperature at 100% use: 70°C at 20° ambient temperature
- According to Atex 2014/34/EU rule, group 2, category 3 GD
- Electrical connection DIN 43650 B-IND

Code	Abbrev.	Nominal voltage	Absorption	
			Inrush	Holding
W021600001	Coil 22 Ø9 3.8W-24VDC	24Vcc	3.8W	3.8W
W021600011	Coil 22 Ø9 6.5VA-24VAC	24V 50/60Hz	9VA	6.5VA
W021600021	Coil 22 Ø9 6.5VA-110VAC	110V 50/60Hz	9VA	6.5VA
W021600031	Coil 22 Ø9 6.5VA-220VAC	220V 50/60Hz	9VA	6.5VA

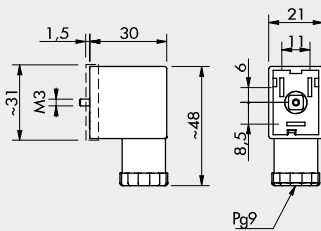
COILS, SIDE 30 mm FOR PIV.B SOLENOID VALVES



- Voltage tolerance: -10 to +15%
- Insulation class: M180
- Degree of protection: IP65 – EN60529 with connector
- Avoid prolonged exposure to the atmospheric agents
- According to Atex 2014/34/EU rule, group 2, category 3 GD
- Electrical connection DIN 43650 - A

Code	Abbrev.	Nominal voltage	Power absorption (average power input)	
W021600101	Coil 30 Ø13 10W-24VDC	24Vcc	10W	
W021600111	Coil 30 Ø13 13VA-24VAC	24V 50/60Hz	13VA	
W021600121	Coil 30 Ø13 13VA-110VAC	110V 50/60Hz	13VA	
W021600131	Coil 30 Ø13 13VA-220VAC	220V 50/60Hz	13VA	

CONNECTORS, SIDE 22 mm DIN 43650 B-IND FOR PIV.I-PIV.T

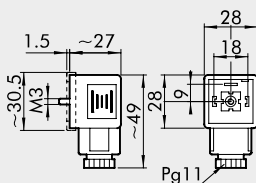


Code	Type	Colour	Ø Cable
W0970510011	Standard	Black	PG9
W0970510012	LED 24V	Transparent	PG9
W0970510013	LED 110V	Transparent	PG9
W0970510014	LED 220V	Transparent	PG9
W0970510015	LED + VDR 24V	Transparent	PG9
W0970510016	LED + VDR 110V	Transparent	PG9
W0970510017	LED + VDR 220V	Transparent	PG9
W0970510070	Atex II 2 GD	Black	PG9

Code	Type	Colour	Ø Cable
W0970510051	LED 24VDC Energy Saving	Transparent	PG9

For technical data see page B1.61

CONNECTORS, SIDE 30 mm DIN 43650-A FOR PIV.B



Code	Type	Colour	Ø Cable
W0970520033	Standard	Black	PG11
W0970520034	LED 24V	Transparent	PG11
W0970520035	LED 110V	Transparent	PG11
W0970520036	LED 220V	Transparent	PG11
W0970520037	LED + VDR 24V	Transparent	PG11
W0970520038	LED + VDR 110V	Transparent	PG11
W0970520039	LED + VDR 220V	Transparent	PG11
W0970520070	Atex II 2 GD	Black	PG11

SOLENOID VALVES PIV IN LINE



- PIV.I – PIV.B in-line solenoid valves
- Threaded ports: M5, G1/8", G1/4"
- 2/2 – 3/2 solenoid valves - normally closed/normally open
- Installation in any position
- Particularly suitable for high operating frequencies and low response times.



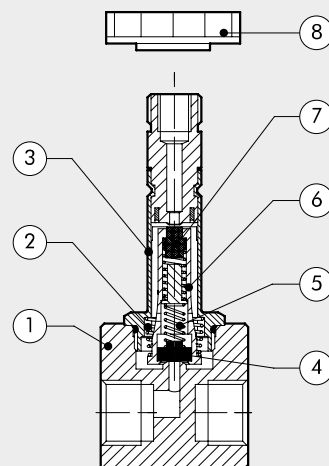
VALVES
SOLENOID VALVES PIV IN LINE

TECHNICAL DATA	PIV.I IN LINE	PIV.B IN LINE
Absorption	5W to 5VA	10W - 13VA
Voltage available	12; 24VDC - 24; 110; 220VAC 50/60Hz	24VDC - 24; 110; 220VAC 50/60 Hz
Voltage tolerance	% -10 to 15	-10 to 15
Max operating frequency	Hz 30	15
Solenoid rating	% 100	100
Response time	ms 8 to 15	10 to 15
Type of protection	IP 65	IP 65
Type of coil	Coil side 22 Ø 8 DIN 43650	Coil side 30 DIN 43650
Insulation class	155	155
Ambient temperature	°C -15 to 50	-15 to 50
Fluid temperature	°C -15 to 50	-15 to 50
Fluid	Filtered lubricated or unlubricated air	Filtered lubricated or unlubricated air
Working life	25 million cycles	-
Weight	35 to 40 (depending on version)	130
Maximum coil/nut torque	Nm 1	1

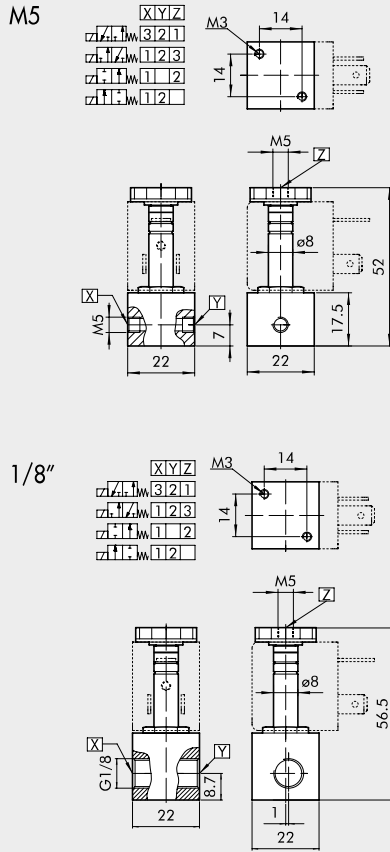
Note on use:
The 2/2 NC and 2/2 NO valves work only with inlet pressure ≥ outlet pressure.

COMPONENTS

- ① Body: aluminium
- ② Springs: steel
- ③ Sleeve
- ④ Gasket: NBR
- ⑤ Springs: steel
- ⑥ Mobile core
- ⑦ Gasket: FKM/FPM
- ⑧ Coil locking ring

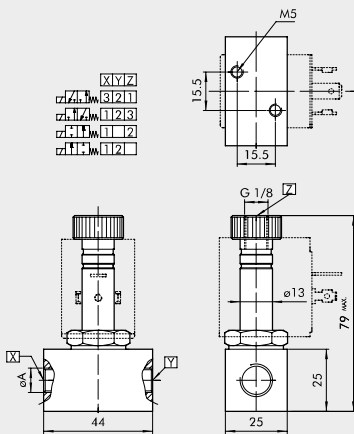


PIV.I VALVES, OPERATOR Ø 8 mm, IN LINE – M5 – 1/8"



Symbol	Code	Abbrev.	Input thread	Air hole Ø [mm]	kv Factor	Pressure range [bar]	
						DC	AC
	W4017000100	PIV421S5 NC	M5	1.2	0.65	-0.99 to 30	-0.99 to 30
	W4017001300	PIV9218S NC	G1/8"	2.4	2	-0.99 to 6	-0.99 to 7
	W4017001100	PIV4218S NC	G1/8"	1.2	0.65	-0.99 to 30	-0.99 to 30
	W4017001200	PIV7218S NC	G1/8"	1.6	1.2	-0.99 to 15	-0.99 to 14
	W4017000101	PIV721S5 NO	M5	1.4	0.8	-0.99 to 10	-0.99 to 10
	W4017001201	PIV7218S NO	G1/8"	1.4	0.8	-0.99 to 10	-0.99 to 10
	W4017003100	PIV431S5 NC	M5	1.2	0.65	-0.99 to 10	-0.99 to 10
	W4017004100	PIV4318S NC	G1/8"	1.2	0.65	-0.99 to 10	-0.99 to 10
	W4017004200	PIV7318S NC	G1/8"	1.6	1	-0.99 to 6.5	-0.99 to 6.5
	W4017004201	PIV7318S NO	G1/8"	1.4	0.7	0 to 6	0 to 7

PIV.B VALVES, OPERATOR Ø 13, IN LINE



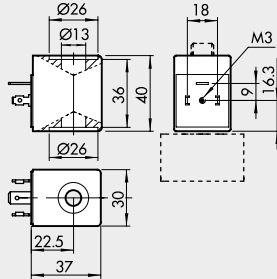
Symbol	Code	Abbrev.	Input thread	Ø Air hole [mm]	kv Factor	Pressure range [bar]	
						DC	AC
	W4026005001	PIV73B8S NO	G1/8"	1.6	1.2	-0.99 to 6	-0.99 to 12
	W4026005101	PIV73B4S NO	G1/4"	1.6	1.2	-0.99 to 6	-0.99 to 12
	W4026005111	PIV93B4S NO	G1/4"	2.4	2	-0.99 to 3	-0.99 to 4
	W4026005010	PIV93B8S NC	G1/8"	2.4	2.8	0 to 8	0 to 10
	W4026005020	PIVW3B8S NC	G1/8"	3	4	0 to 5.5	0 to 6
	W4026005000	PIV73B8S NC	G1/8"	1.6	1.4	0 to 14	0 to 17
	W4026005100	PIV73B4S NC	G1/4"	1.6	1.4	0 to 14	0 to 17
	W4026005110	PIV93B4S NC	G1/4"	2.4	2.8	0 to 8	0 to 8
	W4026005120	PIVW3B4S NC	G1/4"	3	4	0 to 5.5	0 to 6
	W4026004000	PIV92B4S NC	G1/4"	2.4	3	0 to 15	0 to 30
	W4026004010	PIVX2B4S NC	G1/4"	4	7	0 to 6	0 to 12
	W4026004020	PIVZ2B4S NC	G1/4"	6	9	0 to 1.5	0 to 5
	W4026004001	PIV92B4S NO	G1/4"	2.4	2.6	0 to 13	0 to 15

SYNOPTIC, SIZES AND VERSIONS

P I V FAMILY	7 AIR HOLE	2 NUMBER OF WAYS	B CONNECTION	4 THREAD	S VERSION	N C FURTHER DETAILS
	4 1.2 mm	2 2 ways	I 22 x 22 operator Ø 8 B 30 x 30 operator Ø 13	5 M5	S standard	NC normally closed NO normally open
	7 1.6 mm	3 3 ways		4 G1/4"		
	9 2.4 mm			8 G1/8"		
	W 3 mm					
	X 4 mm					
	Z 6 mm					

ACCESSORIES

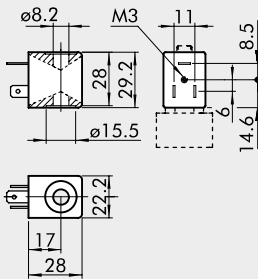
COIL, SIDE 30 mm - FOR PIV.B SOLENOID VALVES



- Voltage tolerance: -10 to +15%
- Insulation class: M180
- Degree of protection: IP65 – EN60529 with connector
- Avoid prolonged exposure to the atmospheric agents
- According to Atex 2014/34/EU rule, group 2, category 3 GD
- Electrical connection DIN 43650 - A

Code	Abbrev.	Nominal voltage	Absorption (average)
W0216001001	Coil 30 Ø13 10W-24VDC	24Vcc	10W
W0216001011	Coil 30 Ø13 13VA-24VAC	24V 50/60Hz	13VA
W0216001021	Coil 30 Ø13 13VA-110VAC	110V 50/60Hz	13VA
W0216001031	Coil 30 Ø13 13VA-220VAC	220V 50/60Hz	13VA

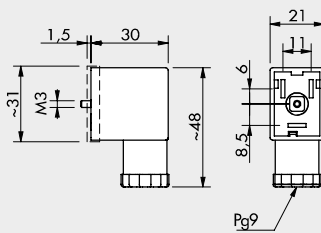
COIL, SIDE 22 mm - FOR PIV.I SOLENOID VALVES



- Voltage tolerance: -10 to +15%
- Insulation class: F155
- Degree of protection: IP65 – EN60529 with connector
- Avoid prolonged exposure to the atmospheric agents
- Maximum temperature of coil at 100% use: 70°C at 20° ambient temperature
- According to Atex 2014/34/EU rule, group 2, category 3 GD
- Electrical connection DIN 43650 B-IND

Code	Abbrev.	Nominal voltage	Absorption Inrush	Absorption Holding
W0215000051	Coil 22 Ø8 5W-12VDC	12Vcc	5W	5W
W0215000001	Coil 22 Ø8 5W-24VDC	24Vcc	5W	5W
W0215000011	Coil 22 Ø8 5VA-24VAC	24V 50/60Hz	8VA	5VA
W0215000021	Coil 22 Ø8 5VA-110VAC	110V 50/60Hz	8VA	5VA
W0215000031	Coil 22 Ø8 5VA-220VAC	220V 50/60Hz	8VA	5VA

CONNECTOR, SIDE 22 mm DIN 43650 B-IND

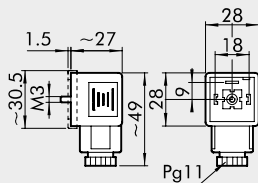


Code	Type	Colour	Ø Cable
W0970510011	Standard	Black	PG9
W0970510012	LED 24V	Transparent	PG9
W0970510013	LED 110V	Transparent	PG9
W0970510014	LED 220V	Transparent	PG9
W0970510015	LED + VDR 24V	Transparent	PG9
W0970510016	LED + VDR 110V	Transparent	PG9
W0970510017	LED + VDR 220V	Transparent	PG9
W0970510070	Atex II 2 GD	Black	PG9

Code	Type	Colour	Ø Cable
W0970510051	LED 24VDC Energy Saving	Transparent	PG9

For technical data see page B1.61

CONNECTOR, SIDE 30 mm DIN 43650-A



Code	Type	Colour	Ø Cable
W0970520033	Standard	Black	PG11
W0970520034	LED 24V	Transparent	PG11
W0970520035	LED 110V	Transparent	PG11
W0970520036	LED 220V	Transparent	PG11
W0970520037	LED + VDR 24V	Transparent	PG11
W0970520038	LED + VDR 110V	Transparent	PG11
W0970520039	LED + VDR 220V	Transparent	PG11
W0970520070	Atex II 2 GD	Black	PG11