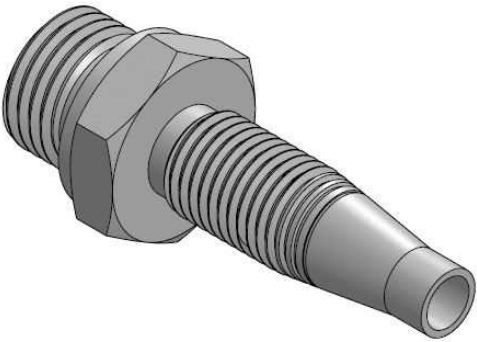
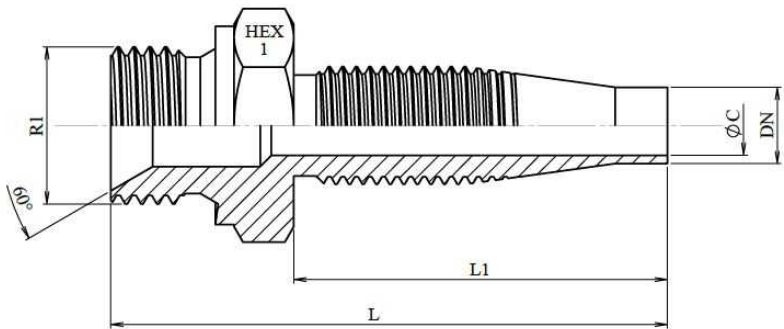


BSP Male parallel 60° cone

Mild Steel

1/1



Part nº	DN	R1	L	L1	HEX 1	ØC
A2G-4	1/4"	1/4" BSP	63	43	17	4
A2G-6	3/8"	3/8" BSP	69,5	48	22	7
A2G-8	1/2"	1/2" BSP	75,5	50	27	8
A2G-12	3/4"	3/4" BSP	87	58,5	32	14,5
A2G-16	1"	1" BSP	102,5	71	41	19