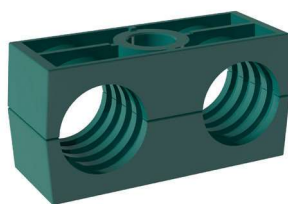


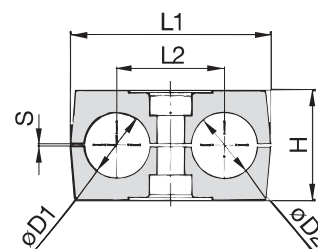
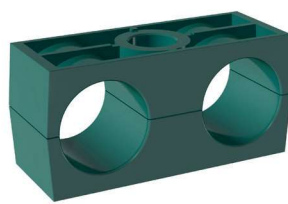
Clamp Body ■ Profiled Design

Profiled Inside Surface with Tension Clearance



Clamp Body ■ Type H

Smooth Inside Surface w/o Tension Clearance



Ordering Codes

Clamp Body

***1*06/06*-PP**

One clamp body is consisting of two clamp halves.

- * 1st Part of STAUFF Group
- * Exact outside diameters Ø D1 / Ø D2 (mm)
- * Material code (see below)

**1
06/06
PP**

Designs & Standard Materials



Polypropylene ■ Profiled Design

Profiled inside surface with tension clearance

Colour: Green

Material code: **PP**



Polypropylene ■ Profiled Design

Profiled inside surface with tension clearance

Colour: Black

Material code: **PP-BK**



Polypropylene ■ Type H

Smooth inside surface without tension clearance

Colour: Green

Material code: **PP-H**



Polypropylene ■ Type H

Smooth inside surface without tension clearance

Colour: Black

Material code: **PP-H-BK**



Polyamide ■ Profiled Design

Profiled inside surface with tension clearance

Colour: Black

Material code: **PA**



Polyamide ■ Type H

Smooth inside surface without tension clearance

Colour: Black

Material code: **PA-H**

See pages 178 / 179 for properties and technical information.

Special Materials

Please contact STAUFF for further details on fire-proof clamp body materials, tested and approved according to several international fire-protection standards (such as BS 6853, EN 45545-2, UL 94 and many more).

See pages 180 / 181 for material properties and technical information.

Product Features

- Proven, tested and trusted product in various markets
- Profiled design recommended for the safe installation of rigid pipes and tubes; type H recommended for the safe installation of hoses and cables
- Available for all commonly used pipe and tube outside diameters
- Environmental protection due to vibration/noise reducing design
- Excellent weathering resistance, even under extreme conditions

Group	STAUFF	DIN	Outside Diameter		Nominal Bore		Ordering Codes (2 Clamp Halves) (**-*- = Material)	Dimensions (mm/in)					
			Pipe / Tube / Hose Ø D1 / Ø D2 (mm) (in)	(in)	Pipe (in)	Copper Tube ASTM B88 (in)		L1	L2	Profiled Design H S min.	Type H H	Width	
1D	1		6				106/06-**-*						
			6,4	1/4			106.4/06.4-**-*						
			8	5/16			108/08-**-*	36	20	27	0,6	26,5	30
			9,5	3/8		1/4	109.5/09.5-**-*	1.42	.79	1.06	.02	1.04	1.18
			10		1/8		110/10-**-*						
			12				112/12-**-*						
2D	2		12,7	1/2		3/8	212.7/12.7-**-*						
			13,5		1/4		213.5/13.5-**-*						
			14				214/14-**-*						
			15				215/15-**-*	53	29	27	0,7	26	30
			16	5/8		1/2	216/16-**-*	2.09	1.14	1.06	.03	1.02	1.18
			17,2		3/8		217.2/17.2-**-*						
3D	3		18				218/18-**-*						
			19	3/4			319/19-**-*						
			20				320/20-**-*						
			21,3		1/2		321.3/21.3-**-*	67	36	37	0,7	36,5	30
			22	7/8		3/4	322/22-**-*	2.64	1.42	1.46	.03	1.44	1.18
			25				325/25-**-*						
4D	4		25,4	1			325.4/25.4-**-*						
			26,9		3/4		426.9/26.9-**-*						
			28				428/28-**-*	80	45	40	0,7	38	30
5D	5		30				430/30-**-*	3.15	1.77	1.57	.03	1.46	1.18
			32	1-1/4			532/32-**-*						
			33,7		1		533.7/33.7-**-*						
			35			1-1/4	535/35-**-*	106	56	53	0,7	52	30
			38	1-1/2			538/38-**-*	4.17	2.20	2.09	.03	2.04	1.18
			40				540/40-**-*						
5D	5		42		1-1/4		542/42-**-*						

Additional outside diameters and combinations of different outside diameters are available upon request.
Please contact STAUFF for further information.