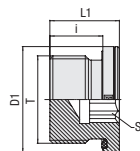
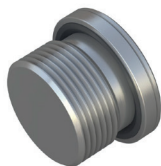


Blanking Screw for Ports Type FI-VS-...-R-WD



Ordering Codes

***FI-VS*-R*1/2*-WD*-B*-W3**

* Blanking Screw for Ports		FI-VS
* Thread Type	Whitworth Parallel Pipe Thread (BSPP)	R
* Thread Size	acc. to dimension table	1/2
Please always indicate thread sizes, e.g. 1/2!		
* Seal Type	Profile Sealing Ring	-WD
* Seal Material	NBR (Buna-N®) FKM (Viton®)	-B -V
* Material Code	Steel, zinc/nickel-plated	-W3

Please contact STAUFF for alternative materials and surface finishings.

Spare Parts / Accessories



Profile Sealing Ring
Type **WDG**

Page 238

Whitworth Parallel Pipe Thread (BSPP)

PN bar	Dimensions mm					Torque N-m	Weight kg ca.	Ordering Codes
	Thread T	D1	i	L1	S1	Thread T	per 100	
400	G 1/8	14	8	12,3	5	15	0,70	FI-VS-R1/8-WD-B-W3
400	G 1/4	19	12	17,3	6	25	1,90	FI-VS-R1/4-WD-B-W3
400	G 3/8	22	12	17,3	8	50	2,70	FI-VS-R3/8-WD-B-W3
400	G 1/2	27	14	19,3	10	70	4,60	FI-VS-R1/2-WD-B-W3
400	G 3/4	32	16	21,3	12	120	8,00	FI-VS-R3/4-WD-B-W3
400	G 1	40	16	22,8	17	200	12,80	FI-VS-R1-WD-B-W3
315	G 1 1/4	50	16	22,8	22	320	19,90	FI-VS-R1-1/4-WD-B-W3
315	G 1 1/2	55	16	22,8	24	400	26,20	FI-VS-R1-1/2-WD-B-W3
250	G 2	75	24	34	24	750	73	FI-VS-R2-WD-B-W3

Standard seal material is NBR (Buna-N®).

Male threaded studs were designed for female threaded ports in components made of steel. For applications with components made of softer mating materials (e.g. Aluminium), the use of connectors with additionally rolled male threads is recommended.

Please contact STAUFF prior to the assembly for further information.

Male stud acc. to ISO 1179-2 (Type E)

Port acc. to ISO 1179-1

Torque recommendations with a tolerance of +10% and refer to original components from the STAUFF Connect product range made of steel with zinc/nickel coating and apply for Steel mating material.

