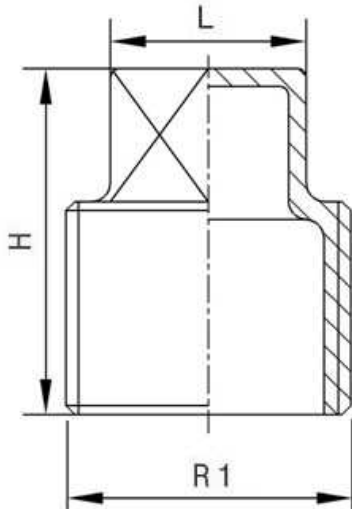


Stainless Steel AISI 316

1/1



Norms: Male thread according to EN10226-1 BSPT
Female thread according to ISO 228-1 BSP
PN: 1/2" - 2": 17,6 Bar --- 2 1/2"- 3": 14 Bar --- 4"- 6": 7 Bar

Part nº	R1	H	L
ZFIG29102	1/8"	7	11
ZFIG29104	1/4"	8,5	15
ZFIG29106	3/8"	10	16
ZFIG29108	1/2"	11	19
ZFIG29112	3/4"	16	22
ZFIG29116	1"	19	25
ZFIG29120	1"1/4	21,5	29,5
ZFIG29124	1"1/2	21,3	30
ZFIG29132	2"	26,8	37
ZFIG29140	2"1/2	32	39
ZFIG29148	3"	34	44
ZFIG29160	4"	42	43

The dimensions in micro-casting parts are approximated in those elements without mechanization.