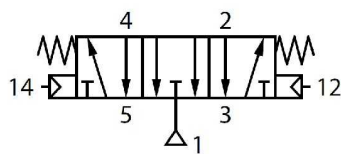


Control valves  
Pneumatic actuating  
**Pneumatic control valve 5/3 open center**



|                          |           |
|--------------------------|-----------|
| Working pressure(Bar)    | 1.5 - 8.0 |
| Guaranteed pressure(Bar) | 12        |
| Working temperature(°C)  | -5 - 60   |



| Part n°   | R1       | Type |
|-----------|----------|------|
| NEU100055 | 1/8" BSP | 5/3  |
| NEU100060 | 1/4" BSP | 5/3  |
| NEU100065 | 1/2" BSP | 5/3  |

\*\*\* Review attached PDF\*\*\*