

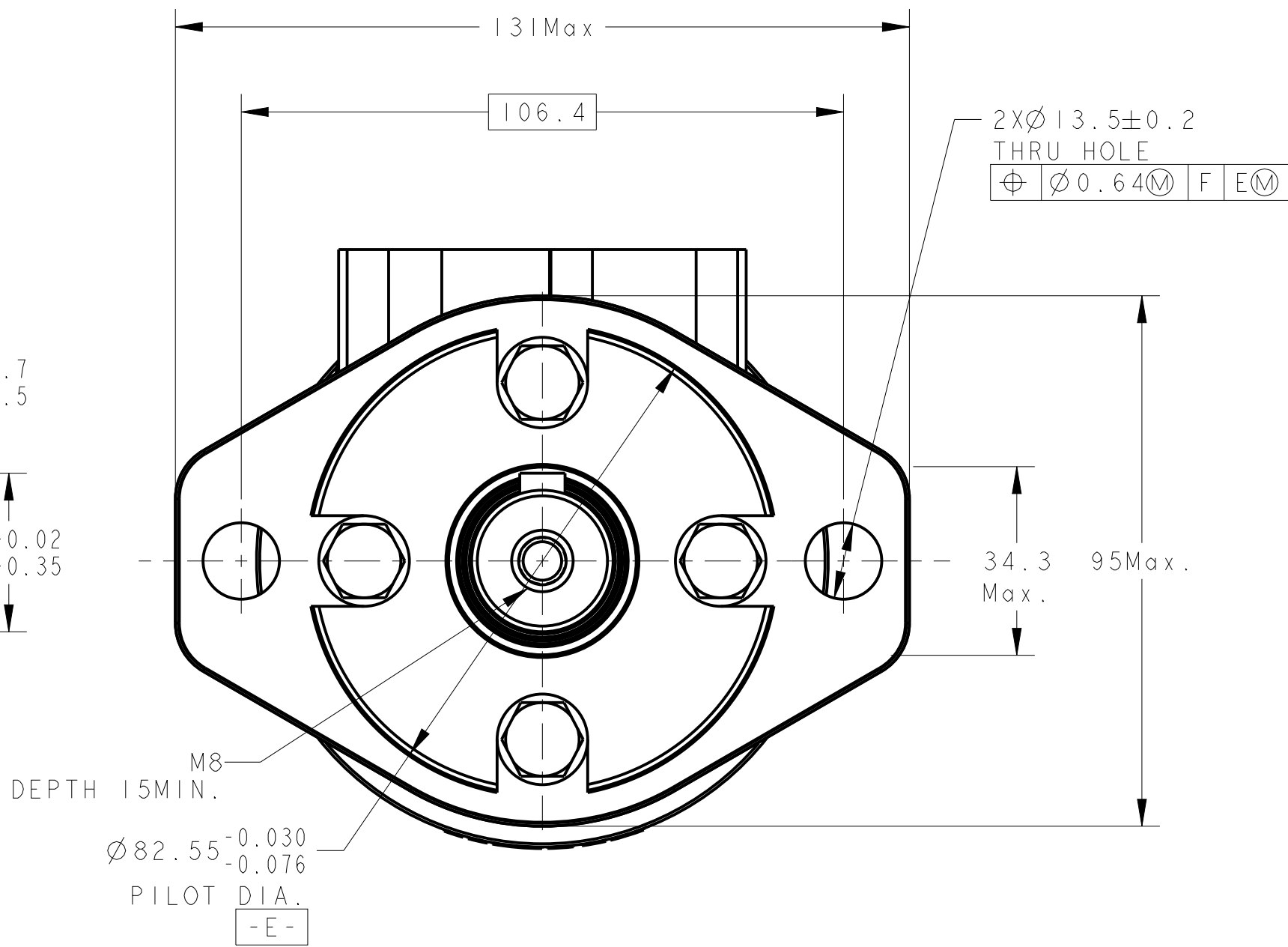
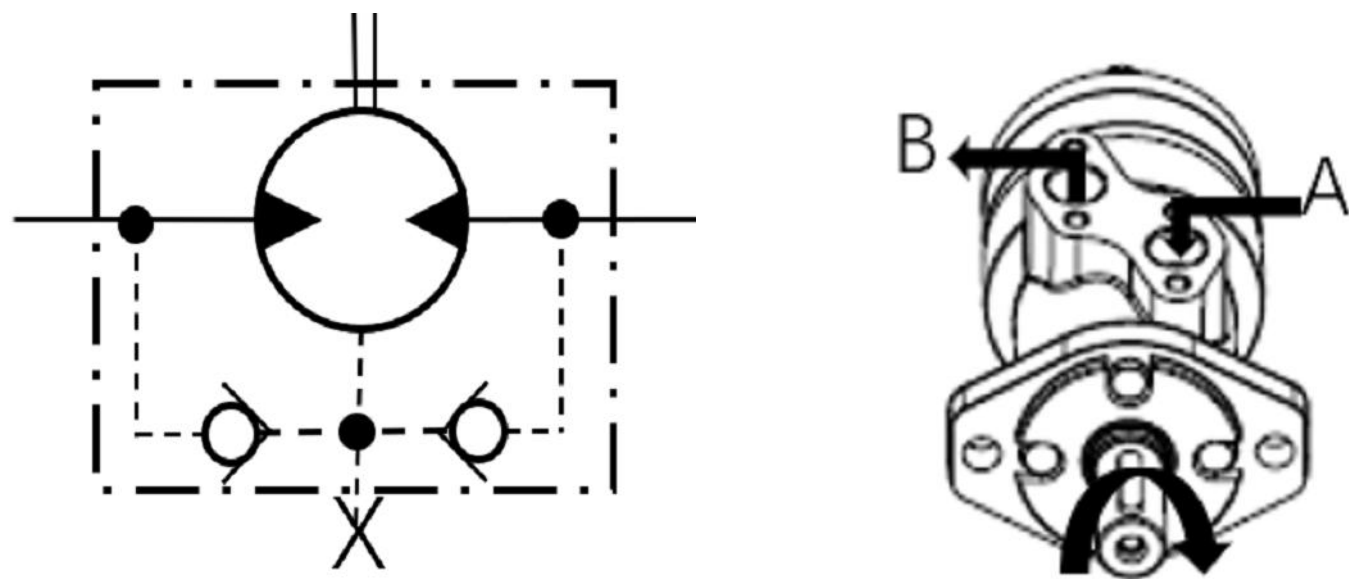
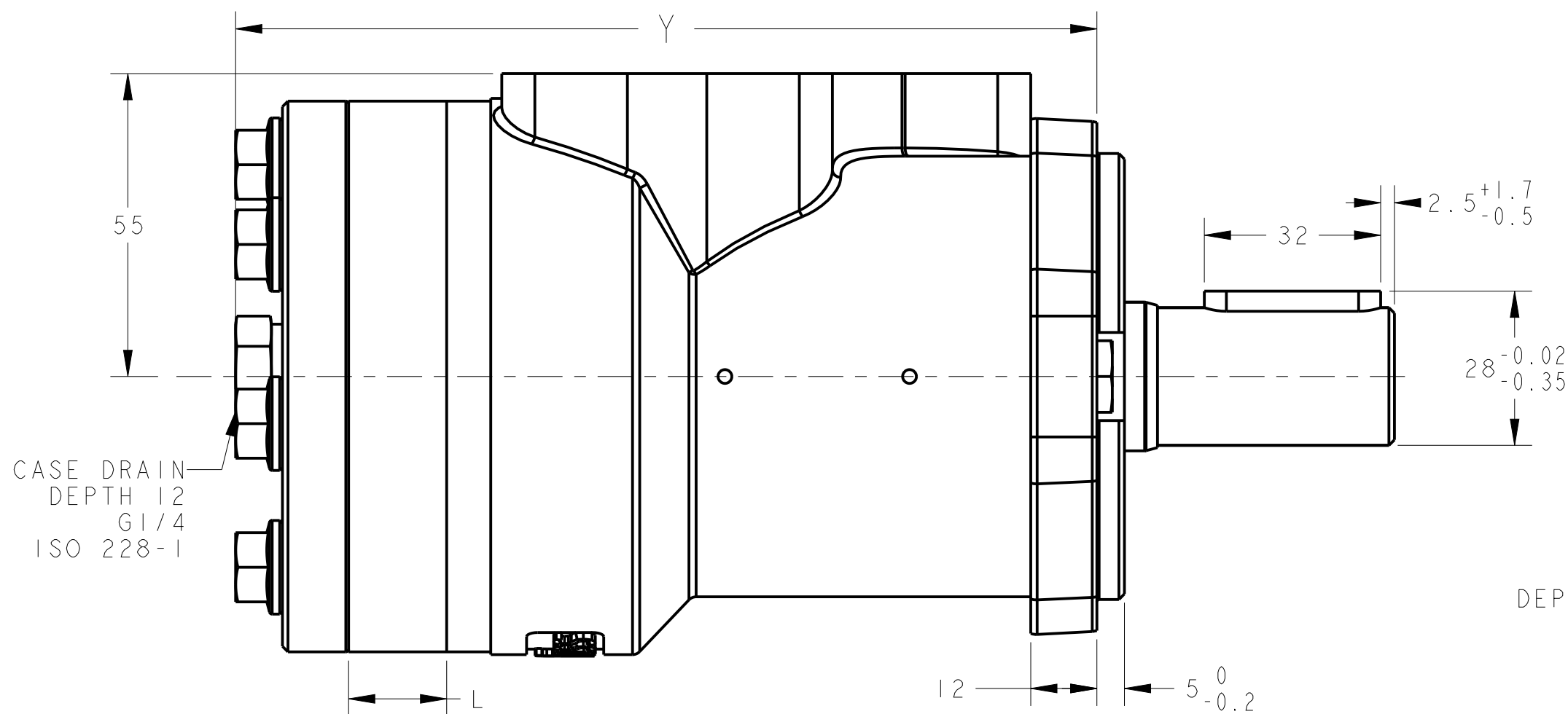
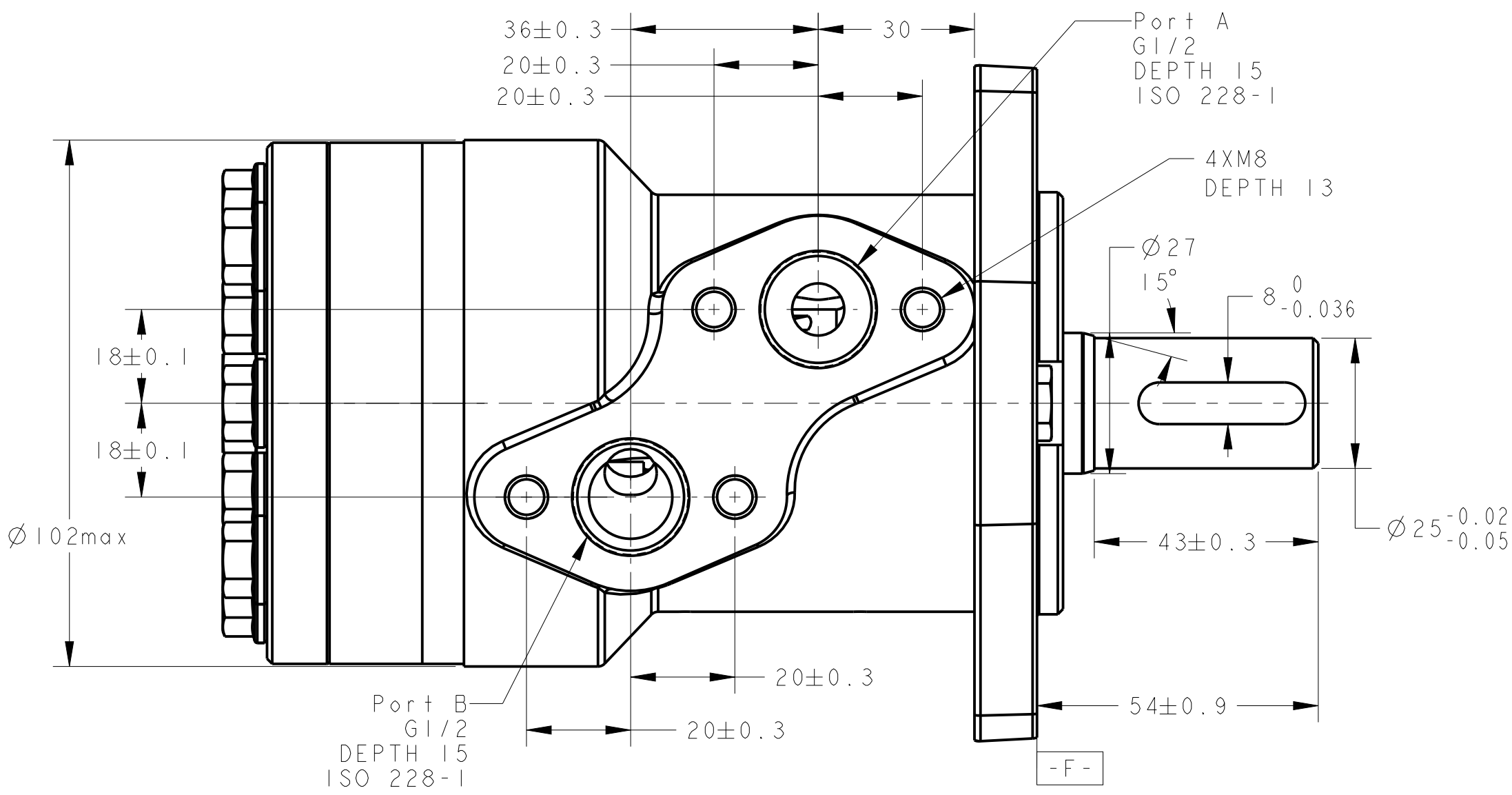
4

3

2

1

REV	DESCRIPTION	BY	CHK	DATE	ECN / MPS
A	释放标准化图纸	YYR	SYM	07/12/23	RN230154



REVIEWED FOR CLASSIFICATION PER ESP-042

PRODUCT NUM.	DIS. (cc/r)	Y MAX (mm)	L (mm)	MODEL CODE
036-0515-003	50	151	11.2	MCS050AA10AA111020A000C00C
036-0516-003	80	158	17.8	MCS080AA10AA111020A000C00C
036-0517-003	100	163	22.4	MCS100AA10AA111020A000C00C
036-0518-003	130	169	28.9	MCS130AA10AA111020A000C00C
036-0519-003	160	169	28.9	MCS160AA10AA111020A000C00C
036-0520-003	195	176	35.6	MCS195AA10AA111020A000C00C
036-0521-003	245	185	44.6	MCS245AA10AA111020A000C00C
036-0522-003	305	196	56	MCS305AA10AA111020A000C00C
036-0523-003	395	212	72	MCS395AA10AA111020A000C00C

UNLESS OTHERWISE SPECIFIED ALL DIMENSIONS ARE IN INCHES MILLIMETERS (INCHES)		DRAWING BASED ON ANSI Y14.5M-1982	
TOLERANCES .X ± -- .XX ± -- .XXX ± -- ∠ ± --		EATON CORPORATION - CONFIDENTIAL AND PROPRIETARY NOTICE TO PERSONS RECEIVING THIS DRAWING AND / OR TECHNICAL INFORMATION THIS DOCUMENT, INCLUDING THE DRAWING AND INFORMATION CONTAINED THEREON, IS CONFIDENTIAL AND IS THE EXCLUSIVE PROPERTY OF EATON CORPORATION, AND IS MERELY ON LOAN AND SUBJECT TO RECALL BY EATON AT ANY TIME. BY TAKING POSSESSION OF THIS DOCUMENT, THE RECIPIENT ACKNOWLEDGES AND AGREES THAT THIS DOCUMENT CANNOT BE USED IN ANY MANNER ADVERSE TO THE INTERESTS OF EATON, AND THAT NO PORTION OF THIS DOCUMENT MAY BE COPIED OR OTHERWISE REPRODUCED WITHOUT THE PRIOR WRITTEN CONSENT OF EATON. IN THE CASE OF CONFLICTING CONTRACTUAL PROVISIONS, THIS NOTICE SHALL GOVERN THE STATUS OF THIS DOCUMENT. COPYRIGHT 2008 EATON CORPORATION - ALL RIGHTS RESERVED.	
UNSPECIFIED DRAFT ANGLES ARE: °		EATON Powering Business Worldwide Eaton Hydraulics Inc. 14615 Lone Oak Road Eden Prairie, MN 55344 USA	
UNSPECIFIED RADII ARE:		DRAWN BY/DATE CHECKED BY/DATE ENGRG BY/DATE METALLURGY BY/DATE	
C SIZE		MATERIAL/HEAT TREAT TITLE XLS Motor	
DO NOT SCALE		NUMBER MCSXXAA10AA111020A000C00C	
		SCALE 1/1 SHEET 1 OF 1	