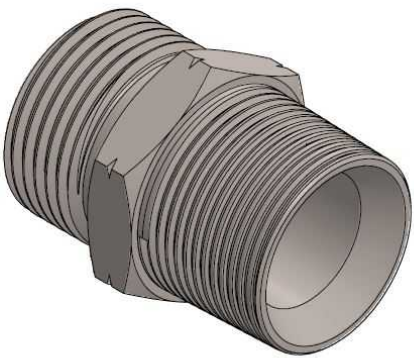
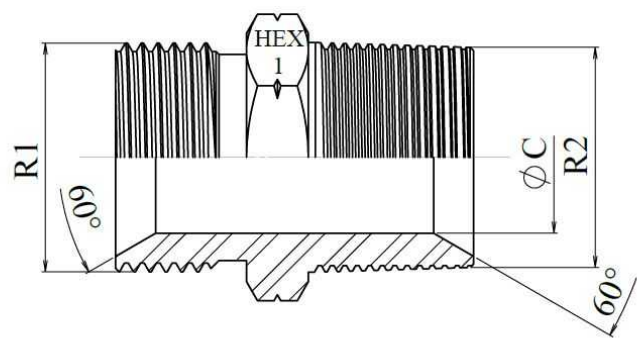


Stainless Steel AISI 316-L

1/1



Part nº	R1	R2	L	HEX 1	ØC	Working Pressure (bar)
Z101402	1/8" BSP	1/8" NPT	23,5	14	3,5	700
Z101404	1/4" BSP	1/4" NPT	30,5	17	6	700
Z101406	3/8" BSP	3/8" NPT	32	19	8	700
Z101408	1/2" BSP	1/2" NPT	41.5	22	11	700
Z101412	3/4" BSP	3/4" NPT	44	27	16	600
Z101416	1" BSP	1" NPT	52	36	22	420
Z101420	1"1/4 BSP	1"1/4 NPT	56	46	28,5	420
Z101424	1"1/2 BSP	1"1/2 NPT	59	50	33	420
Z101432	2" BSP	2" NPT	66	65	46	350