



ACT Mounting Hardware

Installation on Mounting Rails

Required components (for use with single weld plate):

- 2 ACT Hexagon Head Bolts AS...W55
- 1 ACT Cover Plate DP...W55
- 1 ACT Clamp Body (2 Clamp Halves)
- 2 ACT Hexagon Rail Nuts, SM...W55
- 1 ACT Mounting Rail, TS...W55

Before welding, always make sure that the designated position of the ACT Weld Plate is suitable for the expected loads.

Material Code
W55

ACT Mounting Hardware

Material Properties and Handling Instructions

ACT Mounting Hardware is made of Stainless Steel V4A (Material Code: W55) with enhanced corrosion resistance by practically excluding metallic and non-metallic impurities during production, processing and handling.

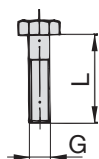
ACT Mounting Hardware is always delivered in hermetically-sealed quality storage bags with 25 pieces each to avoid contamination during transport.

Always make sure that ACT Mounting Hardware is stored separately from carbon steel and any other metals, and that appropriate tools are used to assemble the clamps.

Details: www.stauff.com/act/assembly

ACT Hexagon Head Bolt

Type AS ... W55 (according to DIN 931 / 933)



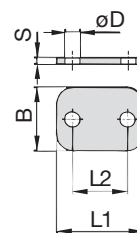
Dimensions applicable only when used with Cover Plate DP and Weld Plate SP



Group STAUFF	DIN	Dimensions (mm/in) Thread G x L	Ordering Code	Packaging Unit (in pieces / bag)
1A	1	M6 x 30 M6 x 1.18	AS-M6x30-W55	25
2	2	M6 x 35 M6 x 1.38	AS-M6x35-W55	25
3	3	M6 x 40 M6 x 1.57	AS-M6x40-W55	25
4	4	M6 x 45 M6 x 1.77	AS-M6x45-W55	25
5	5	M6 x 60 M6 x 2.36	AS-M6x60-W55	25

ACT Cover Plate

Type DP ... W55

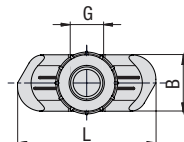
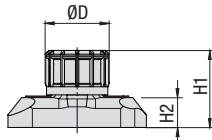
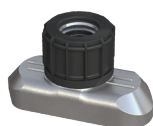


Group STAUFF	DIN	Dimensions (mm/in) L1 L2 B S ØD	Ordering Code	Packaging Unit (in pieces / bag)
1A	1	34 20 30 3 7 1.34 .79 1.18 .12 .28	DP-1A-W55	25
2	2	40,5 26 30 3 7 1.59 1.02 1.18 .12 .28	DP-2-W55	25
3	3	48 33 30 3 7 1.89 1.30 1.18 .12 .28	DP-3-W55	25
4	4	57 40 30 3 7 2.24 1.57 1.18 .12 .28	DP-4-W55	25
5	5	70 52 30 3 7 2.76 2.05 1.18 .12 .28	DP-5-W55	25

Hexagon Rail Nut

(for Use with Mounting Rail TS)

Type SM

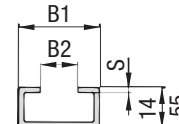
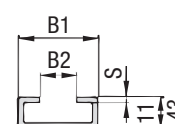
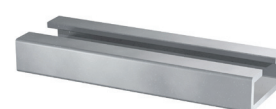


Group STAUFF	DIN	Dimensions (mm/in) Thread G L B H1 H2 ØD	Ordering Codes (Standard Options)
1A	1	M6 25,5 10,4 14,2 5,5 12 1.00 .41 .56 .22 .47	SM-1-8/1D-M-W55
2	2		
3	3		
4	4		
5	5		

Mounting Rail

(for Use with Hexagon Rail Nut SM)

Type TS



Group STAUFF	DIN	Dimensions (mm/in) B1 B2 S	Ordering Codes (Standard Options)
1A	1	28 11 2 1.10 .43 .08	Length of Rail 1 m / 3.28 ft Height 11 mm / .43 in TS-11-1M-W55
2	2		Length of Rail 2 m / 6.56 ft Height 11 mm / .43 in TS-11-2M-W55
3	3		Length of Rail 1 m / 3.28 ft Height 14 mm / .55 in TS-14-1M-W55
4	4		Length of Rail 2 m / 6.56 ft Height 14 mm / .55 in TS-14-2M-W55
5	5		

Mounting Rail TS-11

Mounting Rail TS-14

