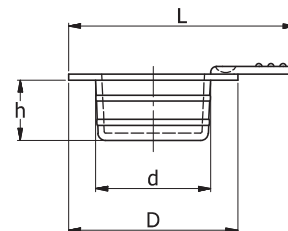
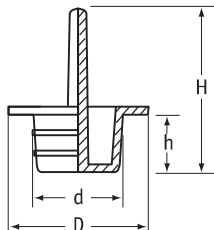
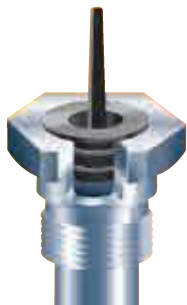


Moss Pull Plugs

SR 1067

Black Thermoplastic Elastomer

- Protect threaded or plain components
- Handy pull-tab for easy removal
- Acid-resistant
- Material temperature: -50°C to +95°C
- Ideal for hydraulic and general engineering applications



Type 1 – Central Pull Plugs

| Part Number | Thread Size | Dimensions (mm) | | | | Standard Pack Quantity |
|-------------|-------------|-----------------|------|------|------|------------------------|
| | | d | D | h | H | |
| 464905 | M8 | 7.5 | 15.5 | 8.0 | 24.0 | 500 |
| 110043 | M10 | 9.5 | 17.5 | 8.0 | 30.0 | 8000 |
| 110044 | M12 | 11.5 | 19.5 | 8.0 | 30.0 | 7000 |
| 110045 | M14 | 12.8 | 21.5 | 10.0 | 30.0 | 6000 |
| 110046 | M16 | 15.2 | 23.5 | 10.0 | 32.0 | 4000 |
| 464906 | M18 | 17.0 | 26.0 | 10.0 | 30.0 | 500 |
| 464907 | M20 | 19.4 | 27.5 | 12.0 | 26.0 | 500 |
| 464908 | M22 | 21.4 | 29.5 | 12.0 | 26.0 | 250 |
| 464909 | M24 | 23.5 | 28.5 | 12.0 | 26.0 | 250 |

Type 2 – Lateral Pull Plugs

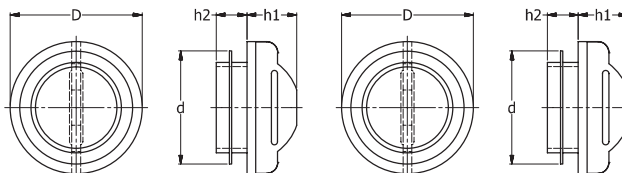
| Part Number | Thread Size | Dimensions (mm) | | | | Standard Pack Quantity |
|-------------|-------------|-----------------|------|------|------|------------------------|
| | | d | D | h | H | |
| 464857 | M6 | 5.5 | 15.5 | 8.0 | 23.2 | 500 |
| 110291 | M8 | 7.5 | 15.0 | 8.0 | 25.3 | 7000 |
| 110280 | M10 | 9.5 | 17.0 | 8.0 | 27.3 | 7000 |
| 110281 | M12 | 11.5 | 17.0 | 8.0 | 27.5 | 7000 |
| 110282 | M14 | 13.0 | 21.0 | 10.0 | 31.0 | 6000 |
| 110283 | M16 | 15.5 | 23.0 | 10.0 | 33.3 | 4000 |
| 110294 | M18 | 17.0 | 26.0 | 10.0 | 35.5 | 4000 |
| 464858 | M20 | 19.4 | 27.5 | 12.0 | 37.1 | 500 |
| 464859 | M22 | 21.4 | 29.5 | 12.0 | 39.4 | 250 |
| 464860 | M24 | 23.5 | 28.5 | 12.0 | 40.8 | 250 |

Snap-Fit Plugs

SR 1008

Red LDPE

- Single turn gives tight fit once pushed into position



| Part Number | To Fit Thread Size | | | Dimensions (mm) | | | | Standard Pack Quantity |
|-------------|--------------------|---------|----------------|-----------------|------|------|-----|------------------------|
| | Metric | BSP/GAS | UNF/JIC | h | D | d1 | h2 | |
| 10530 | M10 | 1/8" | 7/16" | 9.8 | - | 6.0 | 4.0 | 12000 |
| 12363 | M12, M13, M14 | 1/4" | 1/2" | 13.1 | 15.8 | 12.0 | 5.0 | 10000 |
| 12364 | M16 | 3/8" | 5/8" | 16.5 | 19.5 | 14.0 | 5.0 | 10000 |
| 10314 | M18 | - | 3/4" | 18.3 | 21.5 | 11.5 | 7.0 | 7000 |
| 12365 | M20 | 1/2" | - | 21.3 | 22.7 | 12.0 | 7.0 | 5000 |
| 12366 | M22 | 5/8" | 7/8" | 22.4 | 25.8 | 12.0 | 7.0 | 5000 |
| 12621 | M24 | - | - | 23.5 | 28.2 | 12.0 | 7.0 | 3000 |
| 12367 | M25, M26 | 3/4" | 1 1/16" | 25.5 | 29.9 | 12.0 | 7.0 | 2000 |
| 12368 | M28 | 7/8" | 1 1/8" | 27.9 | 32.7 | 12.0 | 7.0 | 3000 |
| 12369 | M32 | 1" | 1 5/16" | 32.0 | 35.6 | 12.0 | 7.0 | 2500 |
| 12622 | M36 | 1 1/8" | 1 1/2", 1 3/8" | 35.7 | 39.7 | 12.0 | 7.0 | 2000 |
| 12598* | M40, M42 | 1 1/4" | 1 5/8" | 41.5 | 45.4 | 7.0 | 7.0 | 2000 |

*Pull-tab not as illustrated.