

Industrial Quick Connect Couplings

single shut-off **Series ESSCIG**

- Top-quality, extreme robust one-hand quick connect couplings with high-class sealing made of brass MS 58 nickel-plated
- Very high flow rates at low pressure drop due to streamlined valve and optimised passage
- Suitable for low vacuum at low couple force compared to all other compatible products
- For compressed air supply in industry and handcraft at extraction points with extremely high flow rates for high-performance tools as well as in engineering and construction

Material

- Body, sleeve, valve body: Brass MS 58 nickel-plated
- Plug: Steel nickel-plated
- Springs: Stainless steel 1.4310
- Balls: Stainless steel 1.4034
- Seals: NBR (other materials on request)
- Valve: Brass MS 58 plain

Max. Work. Pressure	Temperature	DN	Thread	Flow Rate	Operation	Type of Valve	Media	Area	
PN 35 bar	-20°C – +100°C	10	ISO 228/DIN EN 10226	2900 l/min	One-hand	Single Shut-off	Air/Others	Scandinavia	Coupl. S / Plug 10

Couplings with tapered male thread (thread coated)

Thread connection	L	SW	D	L1	Weight	Type No.
R 1/4 m	67	24	27	12	149	ESSCIG 14 A
R 3/8 m	67	24	27	12	157	ESSCIG 38 A
R 1/2 m	69	24	27	17	161	ESSCIG 12 A
R 3/4 m	69	27	27	17	169	ESSCIG 34 A

Couplings with parallel female thread

Thread connection	L	SW	D	L1	Weight	Type No.
G 1/4 f	60	24	27	10	150	ESSCIG 14 I
G 3/8 f	60	24	27	11	159	ESSCIG 38 I
G 1/2 f	60	24	27	12	149	ESSCIG 12 I
G 3/4 f	64	32	27	16	214	ESSCIG 34 I

Couplings with hose barb

Hose connection	L	SW	D	L1	Weight	Type No.
Hose i.D. 9	80	24	27	25	164	ESSCIG 9 T
Hose i.D. 10	80	24	27	25	164	ESSCIG 10 T
Hose i.D. 13	80	24	27	25	166	ESSCIG 13 T
Hose i.D. 16	80	24	27	25	166	ESSCIG 16 T
Hose i.D. 19	80	24	27	25	174	ESSCIG 19 T

For hose clips type ZOS (☺ page 130), type HS (☺ page 131) or crimping ferrules type LPH (☺ page 133)

Plugs with tapered male thread (thread coated)

Thread connection	L	SW	L1	L2	Weight	Type No.
R 1/4 m	39	17	12	21	30	ESSCIG 14 NAS
R 3/8 m	39	17	12	21	32	ESSCIG 38 NAS
R 1/2 m	43	22	17	21	35	ESSCIG 12 NAS
R 3/4 m	46	27	19	21	37	ESSCIG 34 NAS

Plugs with parallel female thread

Thread connection	L	SW	L1	L2	Weight	Type No.
G 1/4 f	36	17	10	21	36	ESSCIG 14 NIS
G 3/8 f	36	17	11	21	42	ESSCIG 38 NIS
G 1/2 f	39	24	12	21	41	ESSCIG 12 NIS
G 3/4 f	42	32	16	21	43	ESSCIG 34 NIS

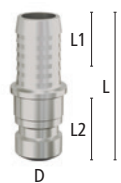
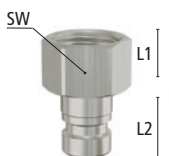
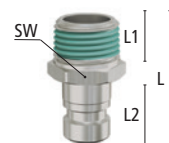
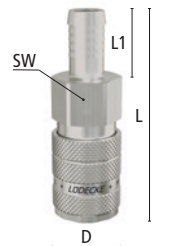
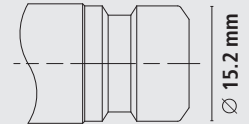
Plugs with hose barb

Hose connection	L	D	L1	L2	Weight	Type No.
Hose i.D. 9	44	16	25	21	24	ESSCIG 9 SS
Hose i.D. 10	44	16	25	21	24	ESSCIG 10 SS
Hose i.D. 13	44	16	25	21	28	ESSCIG 13 SS
Hose i.D. 16	44	18	25	21	30	ESSCIG 16 SS
Hose i.D. 19	44	21	25	21	35	ESSCIG 19 SS

For hose clips type ZOS (☺ page 130), type HS (☺ page 131) or crimping ferrules type LPH (☺ page 133)

DN 10

Plug Profile (original size)

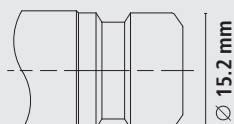


Industrial Quick Connect Couplings

Series ESSCIG double shut-off

DN 10

Plug Profile (original size)



- Top-quality, extreme robust quick connect couplings with high-class sealing made of brass MS 58 nickel-plated
- Double shut-off to avoid leaking media when disconnecting
- Please note: Valve construction designed for media flow from coupling to plug
- Very high flow rates with low pressure drop due to streamlined valve and optimised passage
- Suitable for low vacuum at low couple force compared to all other compatible products
- **Attention: Single shut-off and double shut-off systems cannot be combined with one another**
- **For compressed air supply in industry and handcraft at extraction points with extremely high flow rates for high-performance tools as well as in engineering and construction**

Materials

- Body, sleeve, valve body, plug: Brass MS 58 nickel-plated
- Valve: Brass MS 58 plain
- Springs: Stainless steel 1.4310 • Balls: Stainless steel 1.4034 • Seals: NBR (other materials on request)

Max. Work. Pressure	Temperature	DN	Thread	Flow Rate	Operation	Type of Valve	Media	Area	
PN 35 bar	-20°C – +100°C	10	ISO 228/DIN EN 10226	2650 l/min	Two-hands	Double Shut-off	Air/Others	Scandinavia	Coupl. 5 / Plug 10

Couplings with tapered male thread (thread coated)

Thread connection	L	SW	D	L1	Weight	Type No.
R 1/4 m	67	24	27	12	149	ESSCIG 14 AAB
R 3/8 m	67	24	27	12	157	ESSCIG 38 AAB
R 1/2 m	69	24	27	17	161	ESSCIG 12 AAB
R 3/4 m	69	27	27	17	169	ESSCIG 34 AAB

Couplings with parallel female thread

Thread connection	L	SW	D	L1	Weight	Type No.
G 1/4 f	60	24	27	10	150	ESSCIG 14 IAB
G 3/8 f	60	24	27	11	159	ESSCIG 38 IAB
G 1/2 f	60	24	27	12	149	ESSCIG 12 IAB
G 3/4 f	64	32	27	16	214	ESSCIG 34 IAB

Couplings with hose barb

Hose connection	L	SW	D	L1	Weight	Type No.
Hose i.D. 9	80	24	27	25	164	ESSCIG 9 TAB
Hose i.D. 10	80	24	27	25	164	ESSCIG 10 TAB
Hose i.D. 13	80	24	27	25	166	ESSCIG 13 TAB
Hose i.D. 16	80	24	27	25	166	ESSCIG 16 TAB
Hose i.D. 19	80	24	27	25	174	ESSCIG 19 TAB

For hose clips type ZOS (☺ page 130), type HS (☺ page 131) or crimping ferrules type LPH (☺ page 133)

Plugs with tapered male thread (thread coated)

Thread connection	L	SW	L1	L2	Weight	Type No.
R 1/4 m	61	24	12	21	105	ESSCIG 14 NAAB
R 3/8 m	61	24	12	21	107	ESSCIG 38 NAAB
R 1/2 m	63	24	17	21	142	ESSCIG 12 NAAB
R 3/4 m	63	27	17	21	152	ESSCIG 34 NAAB

Plugs with parallel female thread

Thread connection	L	SW	L1	L2	Weight	Type No.
G 1/4 f	55	24	11	21	122	ESSCIG 14 NIAB
G 3/8 f	55	24	11	21	124	ESSCIG 38 NIAB
G 1/2 f	55	24	12	21	140	ESSCIG 12 NIAB
G 3/4 f	59	32	16	21	152	ESSCIG 34 NIAB

Plugs with hose barb

Hose connection	L	SW	L1	L2	Weight	Type No.
Hose i.D. 9	74.5	24	25	21	110	ESSCIG 9 SAB
Hose i.D. 10	74.5	24	25	21	110	ESSCIG 10 SAB
Hose i.D. 13	74.5	24	25	21	112	ESSCIG 13 SAB
Hose i.D. 16	74.5	24	25	21	112	ESSCIG 16 SAB
Hose i.D. 19	74.5	24	25	21	107	ESSCIG 19 SAB

For hose clips type ZOS (☺ page 130), type HS (☺ page 131) or crimping ferrules type LPH (☺ page 133)

