



 **HBVL-R:**
Taper gas BSPT ISO 7
R3/8"

 **Dry air:** -20°C ÷ 90°C
Air & Fluids: 1°C ÷ 90°C
The maximum recommended working temperature for continuous use is 65°C and 90°C for a maximum use of 5 minutes.

 **Working pressure:**
Up to 10 Bar
From 0 to 8 Bar with dry air
Negative pressure:
- 0,95 Bar (- 95 Kpa)
Data depend from the tubes and temperature

 Potable water, beverages, vacuum, compressed air, selected gases and liquids, compatible fluids with construction materials

 Polyethylene PE, polyamide PA, polyurethane PU, PTFE, FEP
Tubes made of light metals:
Brass, copper and mild steel
Tubes made of hard materials: See page 84 for information on the use of hard material tubes

 **Body:** POM
Collet: POM
Lock claw: Stainless steel
 AISI 301
Seal: EPDM suitable for food contact
Handle: POM
Shaft: POM



Food contact materials
EC 1935/2004



D.M. 174/2004



WRAS certified product materials in contact with drinking water



ICIM certified product food contact materials



ICIM certified product water contact materials



ACS



NSF51 / NSF61
NSF certificate on behalf of CDC PNEUMATICS CORP.



Products in compliance with EC Regulation 1907/2006

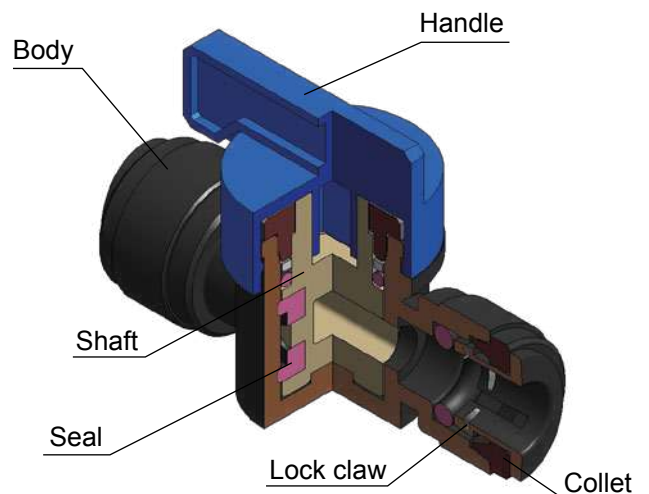


Products in compliance with the directive EU 2015/863

INSERTION - METRIC TUBE

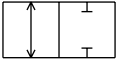
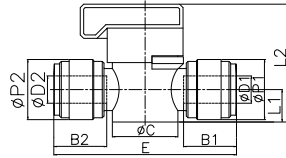
Ø TUBE (mm)	6	8	10	12
TUBE INSERTION LENGTH (mm)	15,5	17,5	20,1	24,7

CONSTRUCTION DETAILS



HBVU

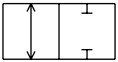
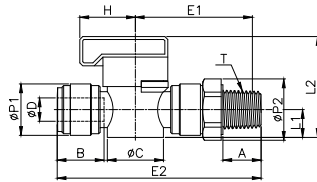
Two-ways union hand valve, flow tube-tube



CODE	ØD1	ØD2	B1	B2	ØP1	ØP2	L1	L2	E	ØC	g
HBVU0606B	6	6	16,1	16,1	15,5	15,5	9,5	34,5	51,7	19,2	16
HBVU0808B	8	8	17,5	17,5	17,6	17,6	9,5	34,5	53,5	19,2	17,4
HBVU1010B	10	10	20,1	20,1	20,0	20,0	12,5	42,3	63,0	24,2	29
HBVU1212B	12	12	23,7	23,7	23,0	23,0	12,5	42,3	70,4	24,2	35,4

HBVL-R

Two-ways hand valve BSPT thread, flow tube-thread

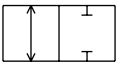
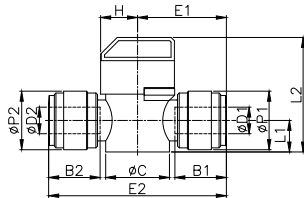


CODE	ØD	T	B	A	ØP1	ØP2	L1	L2	E1	E2	H	ØC	g
HBVL10R03B	10	R 3/8"	20,1	13,5	20	23	12,5	42,3	48,3	79,8	26,3	24,2	34,3

HBVL-R: product without WRAS certification

HBVU-S

Two-ways union hand valve with short handle, flow tube-tube

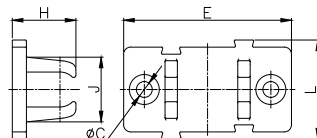


CODE	ØD1	ØD2	B1	B2	ØP1	ØP2	L1	L2	E1	E2	H	ØC	g
HBVU-S0606B	6	6	16,1	16,1	15,5	15,5	9,5	34,5	25,9	51,7	11,1	19,2	15,8
HBVU-S0808B	8	8	17,5	17,5	17,6	17,6	9,5	34,5	26,8	53,5	11,1	19,2	17,2
HBVU-S1010B	10	10	20,1	20,1	20,0	20,0	12,5	42,3	31,5	63,0	13,7	24,2	28,6
HBVU-S1212B	12	12	23,7	23,7	23,0	23,0	12,5	42,3	35,2	70,4	13,7	24,2	35,0

HBVU-S: product without WRAS certification

HMCP

Modular brackets



CODE	E	L	H	J	ØC	g
HMCP06-1/4	47,5	28,0	18,0	18,3	4,5	3,8
HMCP10-3/8	55,2	34,0	22,0	22,0	4,5	6,3

HMCP06-1/4: compliant with HBVU-S Ø6
HMCP10-3/8: compliant with HBVU-S Ø10

SIZES	WHITE	BLACK	GREY
06-1/4	HMCP06-1/4W	HMCP06-1/4B	HMCP06-1/4G
10-3/8	HMCP10-3/8W	HMCP10-3/8B	HMCP10-3/8G

