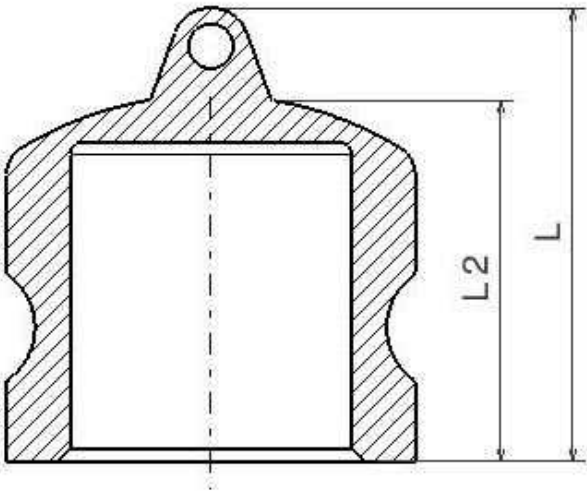


Male Camlock coupling-Dust plugs Type DP

Stainless Steel AISI 316

1/1



PN: 1/2": 150 PSI --- 3/4"-2": 250 PSI --- 3": 125 PSI --- 4": 100 PSI

Part nº	DN	L	L2
ZDP012	12	35	25
ZDP020	20	37	25
ZDP025	25	44	32
ZDP032	32	55	41
ZDP040	40	64	44
ZDP050	50	68	48
ZDP065	65	70	50
ZDP080	80	80	56
ZDP100	100	80	56

The dimensions in micro-casting parts are approximated in those elements without mechanization.