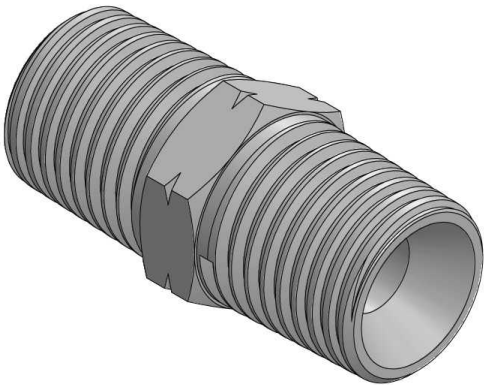
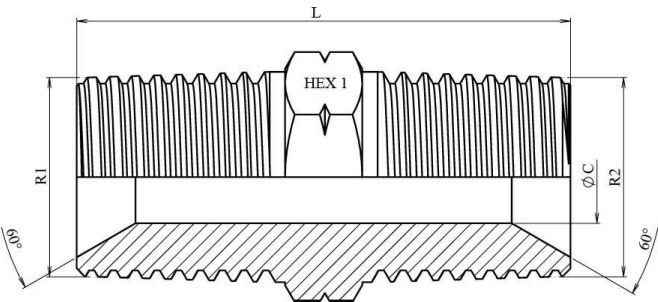


Carbon steel

1/1



Part nº	R1	R2	L	HEX 1	ØC
A10150202	1/8" NPT	1/8" NPT	28	17	4
A10150404	1/4" NPT	1/4" NPT	32	14	6
A10150606	3/8" NPT	3/8" NPT	35	19	8
A10150808	1/2" NPT	1/2" NPT	44,5	22	11
A10151212	3/4" NPT	3/4" NPT	48	27	16
A10151616	1" NPT	1" NPT	58	36	22
A10152020	1" 1/4 NPT	1" 1/4 NPT	62	46	28,5
A10152424	1" 1/2 NPT	1" 1/2 NPT	65	50	33
A10153232	2" NPT	2" NPT	69	60	46

The material can be provided with imperial hexagons