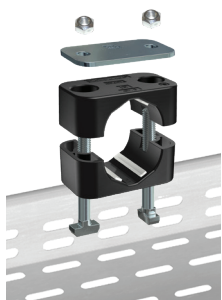


ACT Mounting Hardware

Installation in Field Trays / Cable Ladders



Required components:

- 2 ACT Self-Locking Nuts MUS-HKS ... W55
- 1 ACT Cover Plate DP ... W55
- 1 ACT Clamp Body (2 Clamp Halves)
- 2 ACT Hammerhead Bolts HKS ... W55

Suitable for commonly used field trays and cable ladders with diagonal, lengthwise and/or crosswise slots and perforations.

Material Code
W55

ACT Mounting Hardware

Material Properties and Handling Instructions

ACT Mounting Hardware is made of Stainless Steel V4A (Material Code: W55) with enhanced corrosion resistance by practically excluding metallic and non-metallic impurities during production, processing and handling.

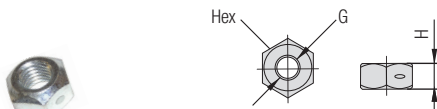
ACT Mounting Hardware is always delivered in hermetically-sealed quality storage bags with 25 pieces each to avoid contamination during transport.

Always make sure that ACT Mounting Hardware is stored separately from carbon steel and any other metals, and that appropriate tools are used to assemble the clamps.

Details: www.stauff.com/act/assembly

All-Metal Self-Locking ACT Nut

Type MUS-HKS ... W55 (similar to DIN 980 / Biloc)



For use with ACT Hammerhead Bolts HKS ... W55

Group	STAUFF	DIN	Dimensions (mm/in)	Thread G	H	Hex	Ordering Code	Packaging Unit (in pieces / bag)
1A	1							
2	2							
3	3		M6		5	10	MUS-HKS-M6-W55	25
4	4				.20	.39		
5	5							

ACT Cover Plate

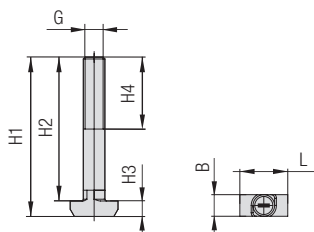
Type DP ... W55



Group	STAUFF	DIN	Dimensions (mm/in)	L1	L2	B	S	ØD	Ordering Code	Packaging Unit (in pieces / bag)
1A	1			34	20	30	3	7	DP-1A-W55	25
				1.34	.79	1.18	.12	.28		
2	2			40,5	26	30	3	7	DP-2-W55	25
				1.59	1.02	1.18	.12	.28		
3	3			48	33	30	3	7	DP-3-W55	25
				1.89	1.30	1.18	.12	.28		
4	4			57	40	30	3	7	DP-4-W55	25
				2.24	1.57	1.18	.12	.28		
5	5			70	52	30	3	7	DP-5-W55	25
				2.76	2.05	1.18	.12	.28		

ACT Hammerhead Bolt

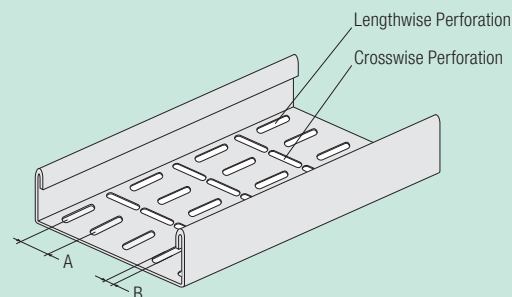
Type HKS ... W55



For use with Self-Locking ACT Nuts MUS-HKS ... W55

Group	STAUFF	DIN	Dimensions (mm/in)	G	H1	H2	H3	H4 min	B	L	Ordering Code	Packaging Unit (in pcs. / bag)
1A	1		M6	44,3	40	4,3	20	6,1	13,3		HKS-M6x40-W55	25
				1.74	1.57	.17	.79	.24	.52			
2	2		M6	49,3	45	4,3	20	6,1	13,3		HKS-M6x45-W55	25
				1.94	1.77	.17	.79	.24	.52			
3	3		M6	54,3	50	4,3	20	6,1	13,3		HKS-M6x50-W55	25
				2.14	1.97	.17	.79	.24	.52			
4	4		M6	59,3	55	4,3	20	6,1	13,3		HKS-M6x55-W55	25
				2.33	2.17	.17	.79	.24	.52			
5	5		M6	74,3	70	4,3	20	6,1	13,3		HKS-M6x70-W55	25
				2.93	2.76	.17	.79	.24	.52			

Suitability Chart for ACT Hammerhead Bolts in the Standard Series



ACT Hammerhead Bolts are suitable for field trays and cable ladders with diagonal, lengthwise and/or crosswise slots and perforations that meet the following requirements:

- Dimension A:** Equal to the bolt center spacing of the clamp assembly
- Dimension B:** 6,2 mm ... 7,0 mm / .24 in28 in (Min ... Max)

In case of doubt, please do not hesitate to contact STAUFF prior to field application.

