

Type SI bladder accumulators in carbon steel for pressures up to 360 bar

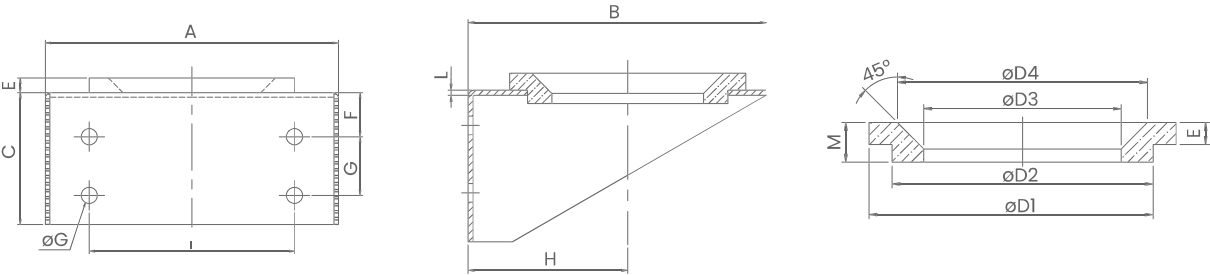


Brackets and fixing collars

SAIP clamping brackets and collars can be used to securely fasten the various types of SI accumulators and ensure independent, non-rigid mounting on the installations. The rubber inserts serve to reduce vibration transmission, compensate for manufacturing tolerances and relieve the connection from external stress. The brackets and collars are made of galvanised carbon steel; a stainless steel version can be supplied on request. The support ring of the brackets and the band of the collars are made of black NBR nitrile rubber.

Brackets and collars can be easily bolted to the system or supports. It is recommended to use only one collar when the length of the accumulator is less than twice the diameter. It is recommended to use one bracket with support ring and one or two collars in other cases.

Brackets with rubber ring support



| Dimension | | | | | | | | | | | | | | | | | |
|------------------|---------------|-----|-----|-----|----|-----|-----|-----|-----|----|----|----|-----|-----|---|----|--------|
| Part no. bracket | Part no. ring | A | B | C | D | D1 | D2 | D3 | D4 | E | F | G | H | I | L | M | Weight |
| mm | | | | | | | | | | | | | | | | | kg |
| MOZ175-1 | ANE175-1 | 200 | 177 | 90 | 10 | 140 | 120 | 91 | 114 | 10 | 30 | 40 | 95 | 140 | 3 | 18 | 1,6 |
| MOZ260-1 | ANE260-1 | 260 | 232 | 120 | 17 | 200 | 170 | 150 | 176 | 15 | 30 | 70 | 128 | 200 | 4 | 22 | 3,8 |