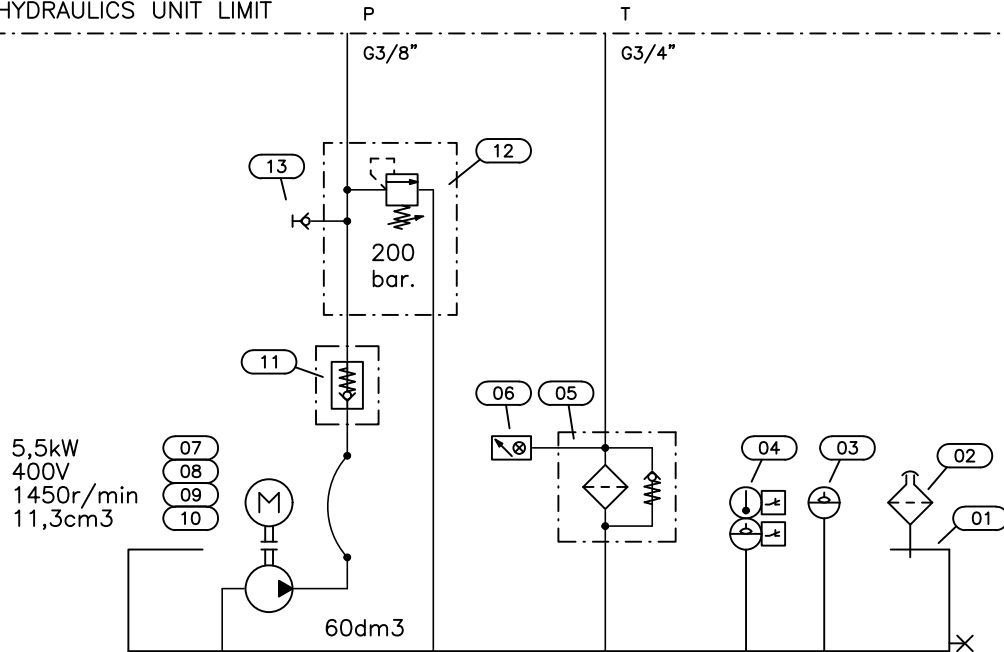


HYDRAULICS UNIT LIMIT



POS	QTY	COMPONENT DESCRIPTION	TYPE
01	1	RESERVOIR	S60-5.5
02	1	RESERVOIR-BREATHER FILTER	FSB/25
03	1	SIGHT GLASS (Termometer)	XL/05T/M12
04	1	FLUID-LEVEL INDICATOR	LM1FPA250NCT70NC
05	1	RETURN FILTER WITH BYPASS VALVE	MPF1002AG2A10HBP01
06	1	OPTICAL CLOGGING INDICATOR	BVA14P01
07	1	ELECTRIC MOTOR	3TA132S-4 (5,5kW 400V 1450r/min B35)
08	1	BELLOUSING	LMG300MFS2004S
09	1	COUPLING	AKG11FS200Z
10	1	GEAR PUMP	HYPAC2C11E20T2B2/2S1NS (11,3cm3)
11	1	NON-RETURN VALVE WITH SPRING	VU-38
12	1	PRESSURE-RELIEF VALVE	VMP3/8/250
13	1	TAKE OFF POINT R1/4"	620.01.204.21

Customer		Project	
Hydraulics diagram 60P-5.5-11.3-200			Date 13.03.2024
			Drawer A.L.
Diag. n:o HTR4026-60P	Work n:o		
Attachments	Qty	Weight kg.	