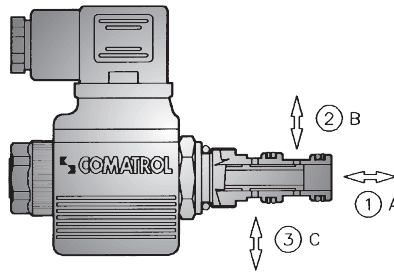
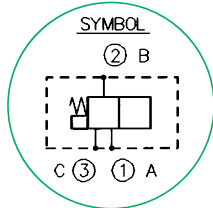


SOLENOID OPERATED DIRECTIONAL VALVES SPOOL TYPE

THREE WAY - TWO/THREE POSITION

NCS

Type EDH 04

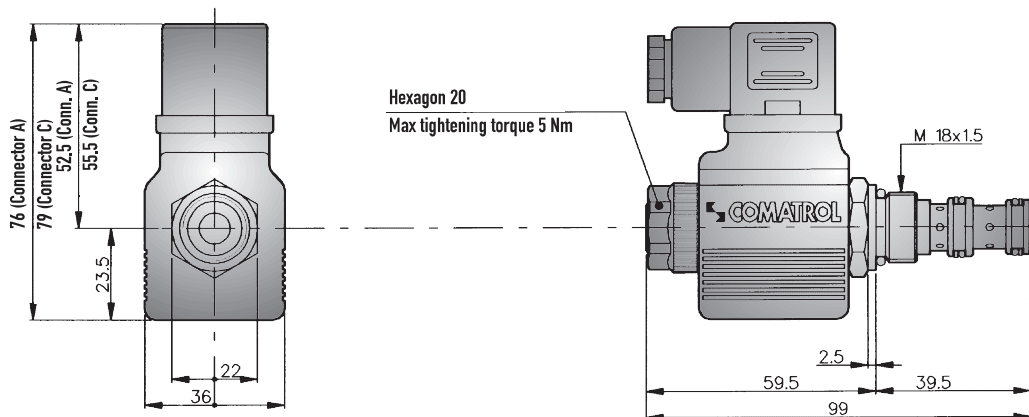


SIZE	04	
NOMINAL PORT SIZE	4.5	
MAX FLOW RATE	l/min	12
	US gpm	3.2
MAX PRESSURE	bar	210
	psi	3000
CAVITY NUMBER	00.95	079
NORMALIZED CAVITY	NCS	04/3
MAX TIGHTENING TORQUE	Nm	40
WEIGHT INCLUDING COIL	kg	0.310
REF		
CAVITY DIMENSIONS	11.450	

VERSIONS

TYPE	HYDRAULIC SYMBOLS	FUNCTIONS OBTAINED WITH SOLENOID		OVERLAP	MAX. FLOW RATE l/min	MAX. PRESSURE bar
		De-energized	Energized			
32 01		② ↔ ③ ①	① ↔ ② ③	-	12	210
32 04		① ↔ ② ③	① ↔ ③ ②	-	12	210

DIMENSIONS (mm)



CHARACTERISTIC OPERATING CURVES

Measurements effected at 20°C ambient temperature with mineral oil having viscosity of 26 cSt at 50°C.
 Power input to coil: 90% of nominal value; temperature: 50°C. Cartridges only.

PRESSURE DROP

TYPE	① ↔ ②	② ↔ ③	① ↔ ③
01	2	1	
04	1		1

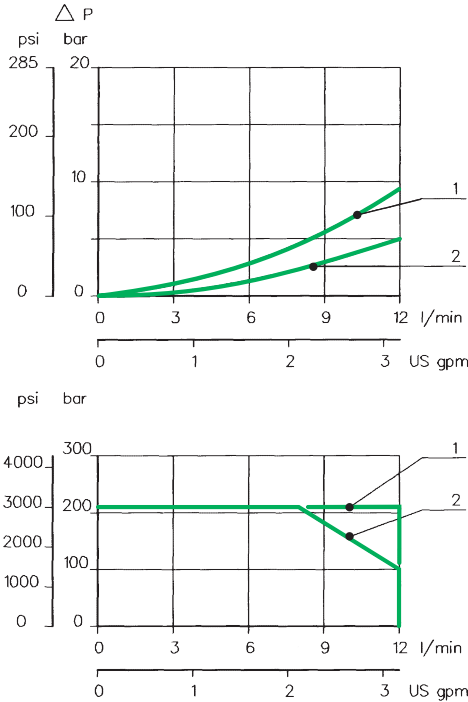
LIMITS OF APPLICATION

TYPE	REFERENCE		
	①	②	③
01	2	1	2
04	2	1	1

MAXIMUM PERMISSIBLE PRESSURE THROUGH PORT ① : 210 bar

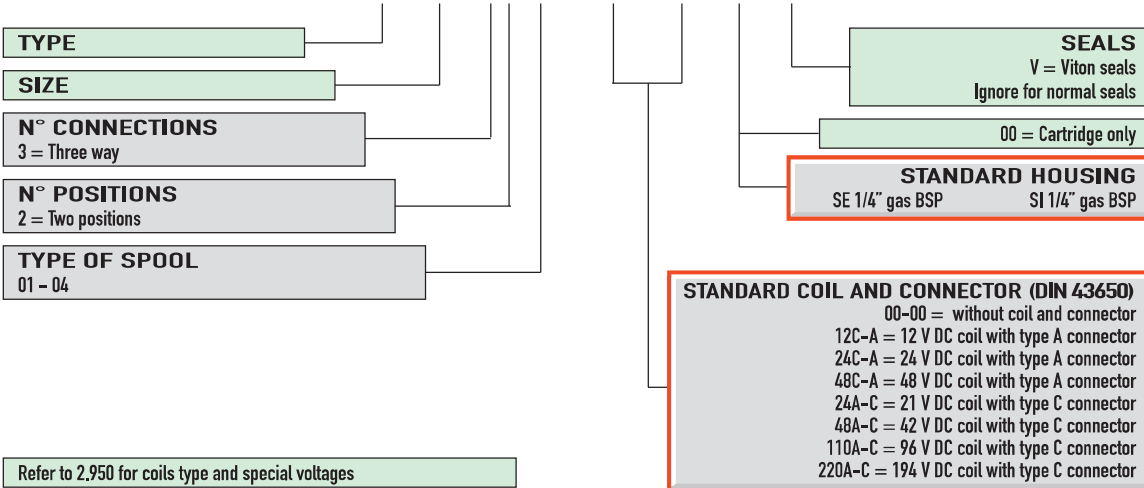
RESPONSE TIME (m. sec)

TYPE	Energized	De-energized
01	30 - 70	40 - 80
04		



EXAMPLE OF ORDER DESIGNATION EDH 04

EDH 04 / 32 01 - 24C - A - 00 - V



SPARE PARTS

Set of standard type external seals with back-up washers (Packs of minimum 10 set)
 EDH 04/3 = 230.00.016.0