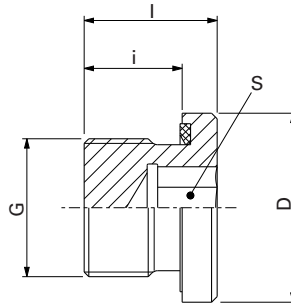


**VS-R ... -WD**

**VS-R ... -WD-1.4571**

- with hexagon socket
- with soft seal made from NBR\* (e.g. Perbunan) for steel
- with soft seal made from FKM (e.g. Viton) for stainless steel (1.4571)
- Inch studs type E to DIN EN ISO 1179-2



PN bar (psi)	DIN - ISO 228 (R..., DIN 259)	Model	kg/ 100 pc.	D	L	i	S	O-ring	Blanking ends	Blanking ends
									VS-R ... -WD	Stainless steel (1.4571) VS-R ... -WD-1.4571
									Part no.	Part no.
400 (5801)	G 1/8 A	<b>VS-R 1/8 -WD</b>	0.6	14	12	8	5	3 x 1	<b>WAL036856</b>	<b>WAL602800</b>
	G 1/4 A	<b>VS-R 1/4 -WD</b>	1.4	19	17	12	6	5 x 1	<b>WAL036858</b>	<b>WAL374787</b>
	G 3/8 A	<b>VS-R 3/8 -WD</b>	2.1	22	17	12	8	7 x 1	<b>WAL036860</b>	<b>WAL374841</b>
	G 1/2 A	<b>VS-R 1/2 -WD</b>	4.0	27	19	14	10	4.5 x 1.5	<b>WAL036862</b>	<b>WAL372597</b>
	G 3/4 A	<b>VS-R 3/4 -WD</b>	7.5	32	21	16	12	6 x 1.5	<b>WAL036864</b>	<b>WAL602802</b>
	G 1 A	<b>VS-R 1 -WD</b>	11.8	40	22.5	16	17	8.5 x 1.5	<b>WAL036866</b>	<b>WAL374498</b>
250 (3626)	G 1 1/4 A	<b>VS-R 1 1/4 -WD</b>	18.6	50	22.5	16	22	10 x 1.5	<b>WAL036868</b>	<b>WAL371504</b>
	G 1 1/2 A	<b>VS-R 1 1/2 -WD</b>	24.7	55	22.5	16	24	12 x 2	<b>WAL036870</b>	<b>WAL609394</b>
400 (5801)	G 1 1/4 A	<b>VS-R 1 1/4 -WD/PN 400</b>	28.3	50	28	20	22	15 x 2	<b>WAL372905</b>	
	G 1 1/2 A	<b>VS-R 1 1/2 -WD/PN 400</b>	39.2	55	30	22	24	20 x 2	<b>WAL372989</b>	

**⚠ Caution:** The pressure specifications refer to the steel version. For the stainless steel version (1.4571), please refer to the pressure specifications on page B5.  
 \*For FPM (e.g. Viton) see price list / available on request