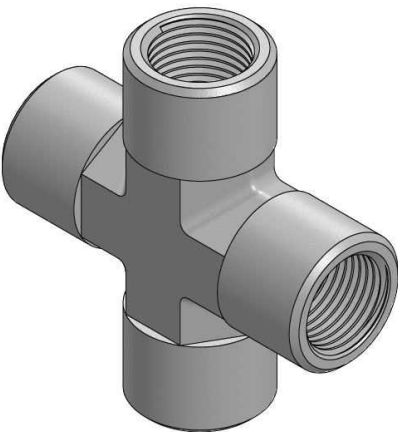
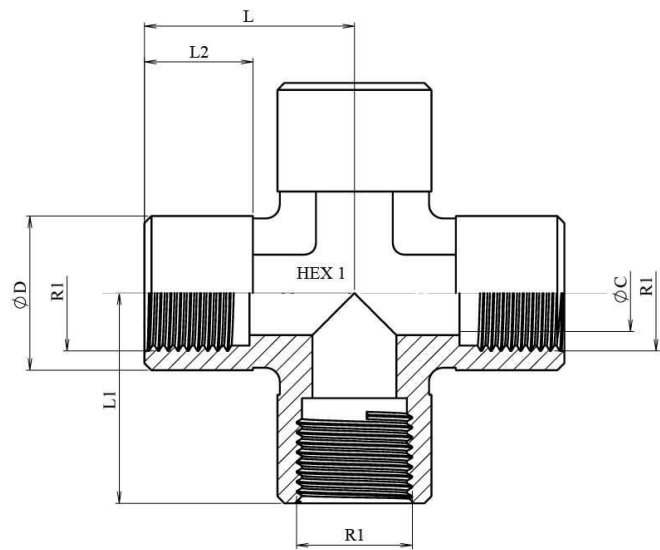


Cross fixed female BSP forge

Mild Steel

1/1



Part nº	R1	L	L1	L2	HEX 1	ØC	ØD
S122702	1/8" BSP	20	20	6	14	8	16
S122704	1/4" BSP	22	22	7	20	10	21,5
S122706	3/8" BSP	30	30	15,5	20	12	22
S122708	1/2" BSP	35	35	16,5	27	17,5	28.3
S122712	3/4" BSP	45	45	21	33	22	34,5
S122716	1" BSP	47	47	23,3	41	25	42,5