



Relief Valves Catalog

Differential Area

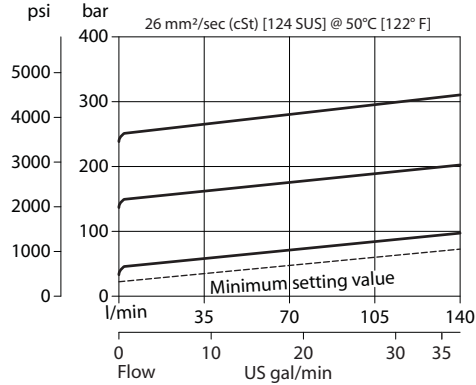
VSB 12-CN

OPERATION

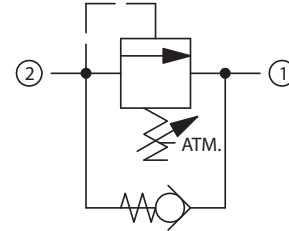
This is a direct-acting, differential area, atmospherically-vented, poppet-type relief valve that relieves from 2 to 1 with an integral free-flow check from 1 to 2.

SPECIFICATIONS

Theoretical performance



Schematic



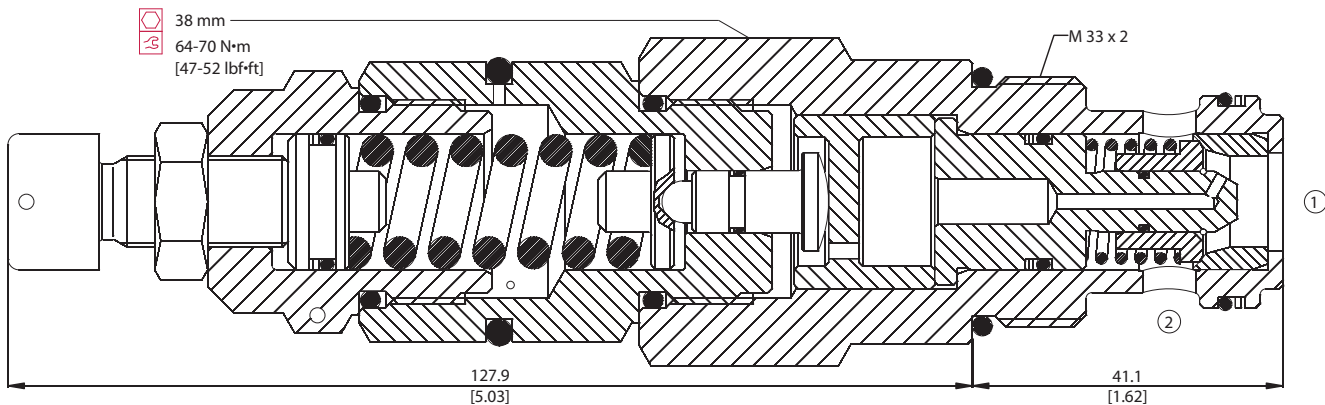
Specifications

Rated pressure	350 bar [5075 psi]
Rated flow	140 l/min [37 US gal/min]
Weight	0.75 kg [1.65 lb]
Cavity	NCS12/2

DIMENSIONS

mm [in]

Cross-sectional view



ORDERING INFORMATION

VSB 12-CN - 1 - 00 - V - XXX

Setting range

- 1 = 25 - 170 bar [363 - 2466 psi]
- 2 = 70 - 270 bar [1015 - 3916 psi]
- 3 = 105 - 350 bar [1523 - 5076 psi]

Seals

- V = Viton
- Omit = Buna-N

Seal Kit

- 230000470
- 230000120

Housing and ports

- 00 = No Housing
- DG1/2 = AL, 1/2 BSP
- DG3/4 = AL, 3/4 BSP
- DG8S = AL, #8 SAE
- DG12S = AL, #12 SAE
- Other housings available

Housing P/N

- No Housing
- NCS12/2-DG-1/2
- NCS12/2-DG-3/4
- NCS12/2-DG-8S
- NCS12/2-DG-12S

To order this valve with a specific factory setting, contact your Comatrol representative

RV - Relief Valves Catalog
VSB 12-CN