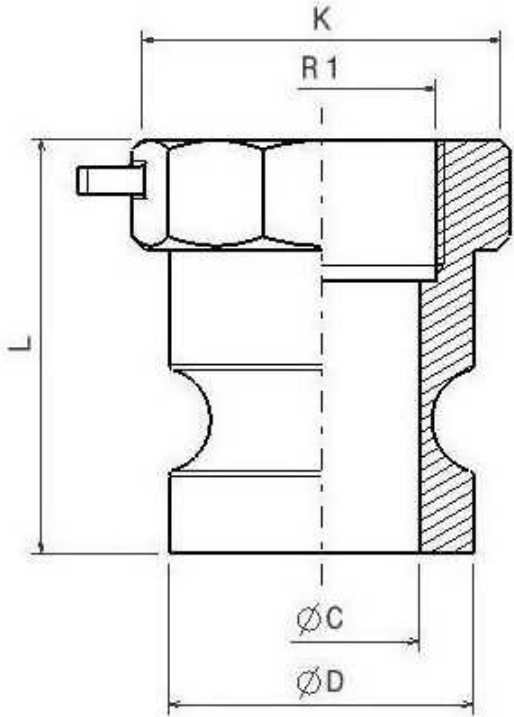


DIN EN 14420-7 Camlock Fittings

Camlock Unions AISI 316

Male Camlock coupling, female BSP threaded Type A

Stainless Steel AISI 316



**Norms:** Male thread according to EN10226-1  
Female thread according to ISO 228-1  
**PN** 1/2": 150 PSI --- 3/4"-2": 250 PSI --- 3": 125 PSI --- 4": 100 PSI

Part nº	DN	R1	L	ØC	ØD	K
ZA012	12	1/2"	38	15	24	26
ZA015	20	1/2"	38	16	32	32
ZA020	20	3/4"	38	21	32	32
ZA025	25	1"	48	24	37	40
ZA032	32	1"1/4	56	28,5	45	48
ZA040	40	1"1/2	60	36	54	56
ZA050	50	2"	64	45	63	67
ZA065	65	2"1/2	74	62	76	81
ZA080	80	3"	73	73	92	96
ZA100	100	4"	78	98	120	127

The dimensions in micro-casting parts are approximated in those elements without mechanization.