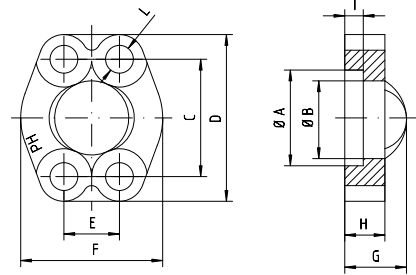


Werkstoff 1.4404
AISI 316 L

Material 1.4404
AISI 316 L



Reihe / Series LOCHBILD / 3000 P.S.I.

Max. Betriebsdruck Max. Working Pressure	SAE Baugröße Nominal Flange Size	Ca. Maße Approx. Dimensions										SAE Baugröße Screws	Schrauben Screws	Bestellzeichen Order-Code
bar	in.	A	B	C	D	E	F	G	H	I	L	metr.	unc.	
345	1/2"	30,96	24,26	38,10	54	17,48	45,6	19,0	13,0	6,22	8,50	M 8 x 25	5/16" x 1 1/4"	VF-3-1/2"
345	3/4"	38,89	32,13	47,63	65	22,23	51,8	22,0	14,0	6,22	10,50	M 10 x 30	3/8" x 1 1/4"	VF-3-3/4"
345	1"	45,24	38,48	52,37	70	26,19	58,4	24,0	16,0	7,49	10,50	M 10 x 35	3/8" x 1 1/4"	VF-3-1"
276	1 1/4"	51,59	43,69	58,72	79	30,18	72,6	22,0	16,0	7,49	12,00	M 10 x 35	7/16" x 1 1/2"	VF-3-1 1/4"
207	1 1/2"	61,09	50,80	69,85	94	35,71	82,2	25,0	16,0	7,49	13,50	M 12 x 35	1/2" x 1 1/2"	VF-3-1 1/2"
207	2"	72,24	62,74	77,77	102	42,88	96,4	26,0	16,0	9,02	13,50	M 12 x 35	1/2" x 1 1/2"	VF-3-2"
172	2 1/2"	84,94	74,93	88,90	114	50,80	108,2	38,0	19,0	9,02	13,50	M 12 x 35	1/2" x 1 1/2"	VF-3-2 1/2"
138	3"	102,39	90,93	106,38	135	61,93	130,6	41,0	22,0	9,02	16,75	M 16 x 45	5/8" x 2"	VF-3-3"

Reihe / Series LOCHBILD / 6000 P.S.I.

Max. Betriebsdruck Max. Working Pressure	SAE Baugröße Nominal Flange Size	Ca. Maße Approx. Dimensions										SAE Baugröße Screws	Schrauben Screws	Bestellzeichen Order-Code
bar	in.	A	B	C	D	E	F	G	H	I	L	metr.	unc.	
420	1/2"	32,45	24,64	40,49	56	18,24	47,2	22,0	16,0	7,24	8,50	M 8 x 30	5/16" x 1 1/4"	VF-6-1/2"
420	3/4"	42,06	32,51	50,80	71	23,80	60,0	28,0	19,0	8,26	10,50	M 10 x 35	3/8" x 1 1/2"	VF-6-3/4"
420	1"	48,41	38,86	57,15	81	27,76	69,9	33,0	24,0	9,02	12,50	M 12 x 45		VF-6-1"
420	1 1/4"	54,76	44,45	66,68	95	31,75	77,2	38,0	27,0	9,78	14,50	M 14 x 50		VF-6-1 1/4"
420	1 1/2"	64,29	51,56	79,38	113	36,50	95,0	43,0	30,0	12,07	16,75	M 16 x 55	5/8" x 2"	VF-6-1 1/2"
420	2"	80,16	67,56	96,82	133	44,45	113,8	52,0	37,0	12,07	21,00	M 20 x 65	3/4" x 2 1/2"	VF-6-2"
420	2 1/2"	108,5	89,5	123,8	176	58,7	150,0	48,0	48,0	20,00	25,00	M 24 x 90		VF-6-2 1/2"
420	3"	132,5	114,5	152,4	215	71,4	176,0	58,0	58,0	25,00	31,00	M 30 x 100		VF-6-3"