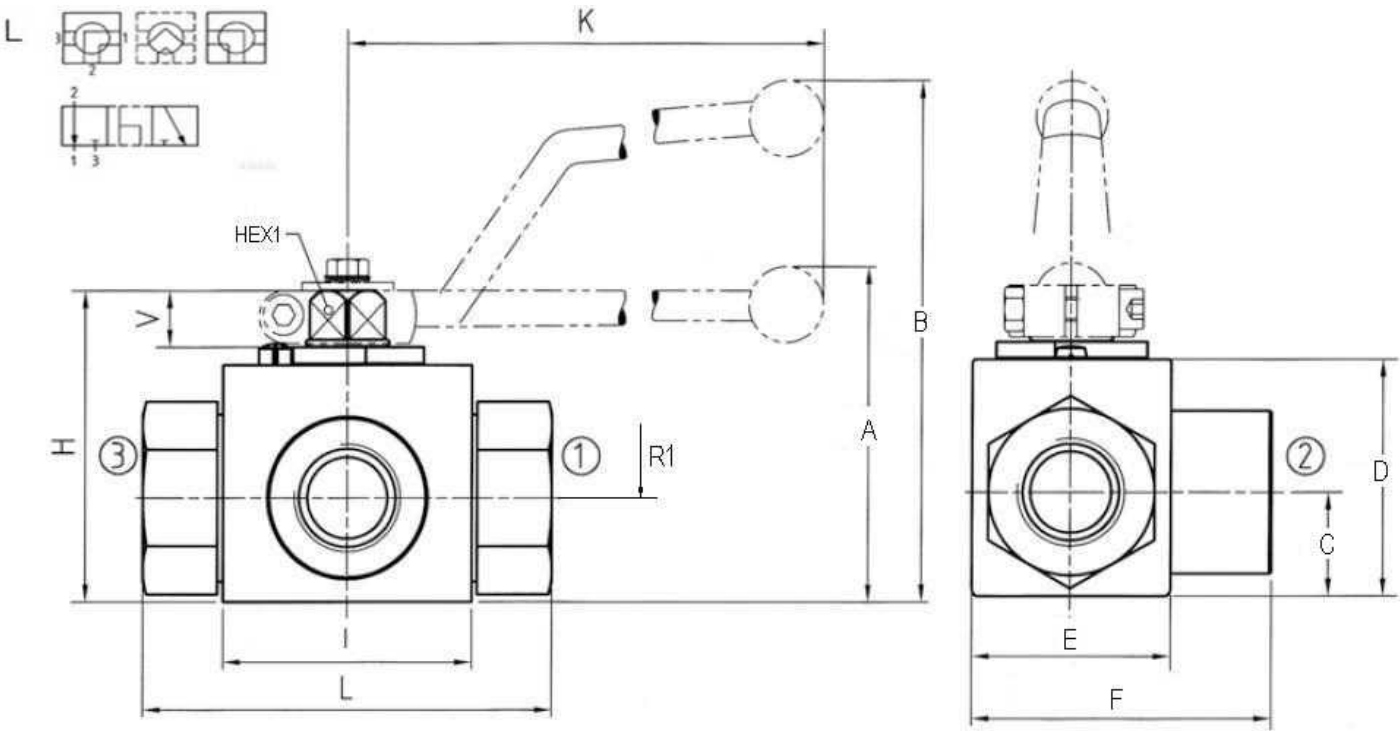


3 Way ball-valve female ISO 228

Stainless Steel AISI 316

1/1



Lever: Zn  
Tmin/Tmax: -20°C/+100°C  
Standard o-ring: NBR  
Ball seat: POM

| Part nº    | DN | R1       | MAX.<br>PRESSURE<br>(bar) | HEX 1 | A  | B  | C    | D  | E  | F    | H  | I  | K   | L   | V  |
|------------|----|----------|---------------------------|-------|----|----|------|----|----|------|----|----|-----|-----|----|
| ZGB3VH 1/4 | 6  | 1/4" BSP | 500                       | 9     |    | 82 | 13,5 | 33 | 29 | 47.5 | 47 | 40 | 115 | 69  | 11 |
| ZGB3VH 3/8 | 10 | 3/8" BSP | 500                       | 9     |    | 86 | 17,5 | 38 | 35 | 52   | 52 | 43 | 115 | 72  | 11 |
| ZGB3VH 1/2 | 13 | 1/2" BSP | 500                       | 9     |    | 89 | 19   | 40 | 38 | 59   | 54 | 48 | 115 | 83  | 11 |
| ZGB3VH 3/4 | 20 | 3/4" BSP | 500                       | 9     | 79 |    | 24,5 | 57 | 52 | 72   | 75 | 62 | 200 | 95  | 14 |
| ZGB3VH 1   | 25 | 1" BSP   | 315                       | 14    | 87 |    | 29,5 | 65 | 61 | 85.5 | 83 | 66 | 200 | 113 | 14 |

The pressure has to enter through the central port of the valve.  
Valve comes with through bores