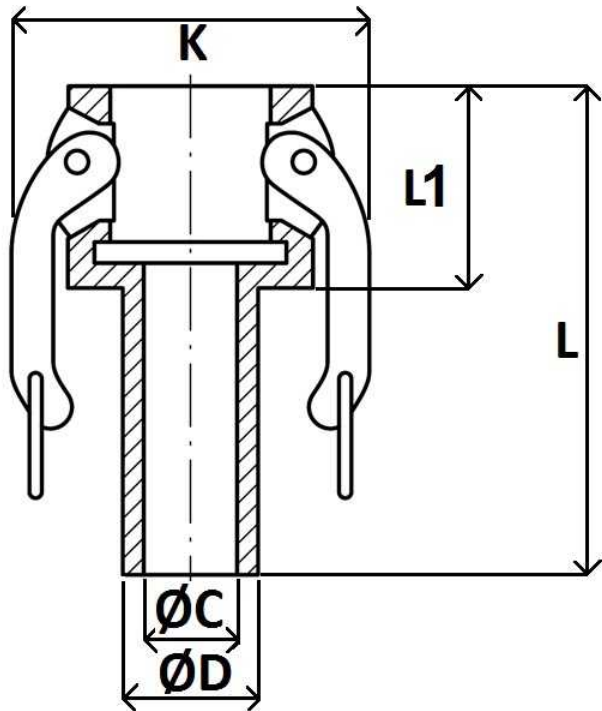


Autolock, female, with serrated hose shank Type C

Stainless Steel AISI 316

1/1



**Norms:** Male thread according to EN10226-1  
Female thread according to ISO 228-1  
**PN:** 1/2 "- 4" 150 PSI ----- 5 "- 6" 75 PSI

| Part nº | DN  | R1    | L   | L1   | ØC   | ØD   | K    |
|---------|-----|-------|-----|------|------|------|------|
| ZC012S  | 12  | 1/2"  | 69  | 28   | 85   | 14   | 46   |
| ZC020S  | 20  | 3/4"  | 80  | 50   | 14,7 | 20,4 | 62,8 |
| ZC025S  | 25  | 1"    | 94  | 38,2 | 20,6 | 26,5 | 62,8 |
| ZC032S  | 32  | 1"1/4 | 106 | 44   | 27,5 | 33   | 78,5 |
| ZC040S  | 40  | 1"1/2 | 107 | 44   | 34   | 40   | 80   |
| ZC050S  | 50  | 2"    | 126 | 48,3 | 45   | 53   | 96   |
| ZC065S  | 65  | 2"1/2 | 122 | 52,2 | 53   | 66   | 104  |
| ZC080S  | 80  | 3"    | 152 | 53,4 | 66   | 78   | 130  |
| ZC100S  | 100 | 4"    | 175 | 62   | 92   | 103  | 158  |

The dimensions in micro-casting parts are approximated in those elements without mechanization.  
NBR gasket