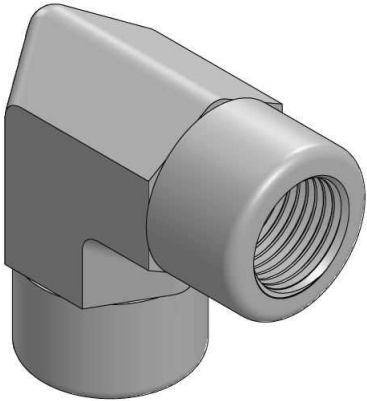
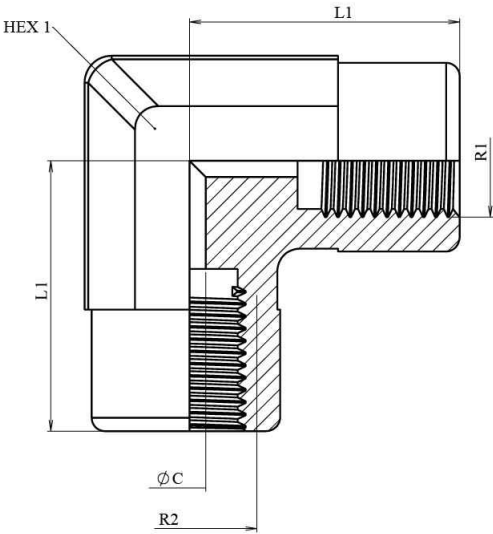


90° Elbow BSP fixed female-BSP fixed female forge

Carbon steel

1/1



Part nº	R1	R2	L1	HEX 1	ØC
S119602	1/8" BSP	1/8" BSP	17	14	8,7
S119604	1/4" BSP	1/4" BSP	26	17	8
S119606	3/8" BSP	3/8" BSP	30	19	12
S119608	1/2" BSP	1/2" BSP	35	24	17,5
S119612	3/4" BSP	3/4" BSP	42	27	16
S119616	1" BSP	1" BSP	47	36	25
S119620	1"1/4 BSP	1"1/4 BSP	43	48	39,3
S119624	1" 1/2 BSP	1" 1/2 BSP	53	65	30
S119632	2" BSP	2" BSP	60	72	35