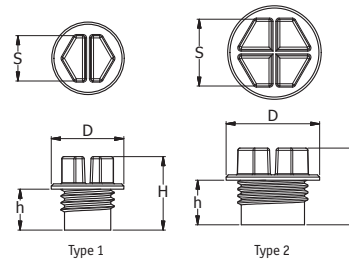


Slottex Plugs

SR 1005

Yellow HDPE

- Can be applied or removed with screwdriver, spanner or socket; manually or with power tool



Metric

Part Number	Thread Size	Type Insert	Dimensions (mm)				Standard Pack Quantity
			D	H	h	S	
110860	M8 x 1	1	12.0	14.2	7.0	7.0	5000
110861	M10 x 1	1	14.0	13.2	6.0	9.0	5000
110862	M12 x 1	1	16.0	16.2	9.0	10.0	5000
110863	M12 x 1.5	1	16.0	16.2	9.0	10.0	5000
110864	M14 x 1.5	2	19.0	16.2	9.0	13.0	5000
110865	M16 x 1.5	2	21.0	17.2	10.0	15.0	3000
110866	M18 x 1.5	2	24.0	18.2	10.0	17.0	3000
110867	M20 x 1.5	2	16.0	20.2	12.0	19.0	3000

BSP/Gas

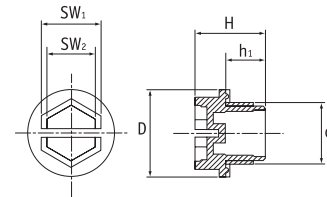
Part Number	Thread Size	Type Insert	Dimensions (mm)				Standard Pack Quantity
			D	H	h	S	
110868	½" x 28	1	14.0	16.2	9.0	9.0	5000
110869	¾" x 19	2	19.0	16.2	9.0	13.0	5000
110870	¾" x 19	2	21.0	17.2	10.0	15.0	5000
110871	½" x 14	2	26.0	20.2	12.0	19.0	3000
110872	¾" x 14	2	32.0	20.2	12.0	24.0	2000
110873	1" x 11	2	40.0	20.2	12.0	30.0	1500
110874	1¼" x 11	2	49.0	20.2	12.0	36.0	800

Sealing Slottex Plugs

SR 1007

Yellow PA 6

- Double sealing ring on underside of flange provides positive sealing
- Quick and easy to fit using screwdriver, spanner, socket or allen key
- Can be tightened manually or with power tool
- Head designed not to trap liquid



Metric Thread

Part Number	Thread Size (d1)	Dimensions (mm)					Standard Pack Quantity
		D	H	h1	SW1	SW2	
462836	M8 x 1	12.5	15.5	8.0	7.0	4.0	5000
462837	M10 x 1	14.5	16.5	9.0	9.0	6.0	5000
466973	M12 x 1	17.0	16.5	9.0	10.0	7.0	500
466974	M10 x 1.5	14.5	16.5	9.0	9.0	6.0	500
462838	M12 x 1.5	17.0	16.5	9.0	10.0	7.0	5000
110836	M14 x 1.5	19.0	17.5	10.0	13.0	10.0	1000
110837	M16 x 1.5	22.3	17.5	9.3	15.0	12.0	500
110838	M18 x 1.5	24.0	17.5	9.0	17.0	14.0	500
462842	M20 x 1.5	26.0	17.5	10.0	19.0	16.0	3000
110839	M22 x 1.5	28.0	17.5	10.0	21.0	18.0	500
466975	M24 x 1.5	30.0	17.5	10.0	24.0	21.0	500
466976	M26 x 1.5	32.0	20.5	12.0	24.0	21.0	500
466977	M27 x 1.5	33.0	20.5	12.0	24.0	21.0	500
466978	M28 x 1.5	34.0	20.5	12.0	24.0	21.0	500
466979	M30 x 1.5	38.0	20.5	12.0	24.0	21.0	500
466980	M32 x 1.5	40.0	20.5	12.0	24.0	21.0	500
466981	M36 x 1.5	45.0	20.5	12.0	24.0	21.0	500
466982	M38 x 1.5	48.0	20.5	12.0	24.0	21.0	250
466983	M45 x 1.5	52.0	21.5	12.0	30.0	27.0	250
466985	M27 x 2	33.0	22.0	13.5	24.0	21.0	250
466986	M30 x 2	38.0	22.0	13.5	24.0	21.0	250
466987	M33 x 2	40.0	22.0	13.5	24.0	21.0	250
466988	M36 x 2	45.0	22.0	13.5	24.0	21.0	250
466989	M42 x 2	50.0	22.0	13.5	30.0	27.0	250
466990	M45 x 2	52.0	22.0	13.5	30.0	27.0	125
466991	M48 x 2	55.0	23.0	13.5	30.0	27.0	100
466992	M52 x 2	60.0	23.0	13.5	30.0	27.0	100

BSP Thread

Part Number	Thread Size (d1)	Dimensions (mm)					Standard Pack Quantity
		D	H	h1	SW1	SW2	
110845	½" x 28	16.0	15.5	8.0	12.0	9.0	1000
110840	¾" x 19	19.0	17.5	10.0	13.0	10.0	1000
110841	¾" x 19	22.0	17.5	10.0	15.0	12.0	500
110842	½" x 14	27.0	19.5	12.0	19.0	16.0	500
466993	¾" x 14	29.5	19.5	12.0	22.0	19.0	500
110843	¾" x 14	32.0	19.5	12.0	24.0	21.0	250
110844	1" x 11	40.0	22.5	15.0	30.0	27.0	100
462853	1¼" x 11	50.0	22.5	15.0	36.0	33.0	1000
466995	1½" x 11	56.0	24.0	15.0	41.0	37.0	250
466996	1¾" x 11	62.0	24.0	15.0	50.0	46.0	250
466997	2" x 11	68.0	24.0	15.0	55.0	51.0	100

UNF Thread

Part Number	Thread Size (d1)	Dimensions (mm)					Standard Pack Quantity
		D	H	h1	SW1	SW2	
466948	¾" x 24	16.0	17.5	10.0	9.0	6.0	5000
466949	7/8" x 20	17.0	17.5	10.0	10.0	7.0	5000
466950	½" x 20	19.0	17.5	10.0	13.0	10.0	3000
466951	9/16" x 18	20.5	17.5	10.0	13.0	10.0	3000
466952	¾" x 18	22.0	17.5	10.0	15.0	12.0	3000
466953	¾" x 16	26.0	17.5	10.0	19.0	16.0	3000
466954	7/8" x 14	28.5	19.5	12.0	21.0	18.0	3000
466955	1" x 14	31.5	19.5	12.0	24.0	21.0	1000
466956	1 1/16" x 12	33.0	19.5	12.0	24.0	21.0	1000
466958	1 3/16" x 12	40.0	22.5	15.0	30.0	27.0	1000
466959	1 5/8" x 12	47.5	22.5	15.0	36.0	33.0	500
466960	1 7/8" x 12	54.0	22.5	15.0	36.0	33.0	500