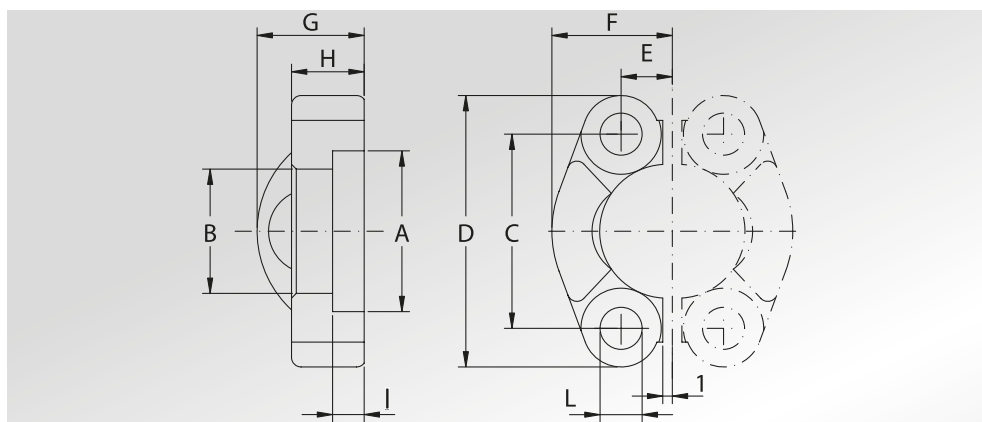


**SEMIFLANGE  
TAGLIATE**



**CUT  
SPLIT FLANGES**



Pressione max di esercizio raccomandata Kg/cm <sup>2</sup>	Grandezza	Tipo	Dimensioni										Viti		Peso Kg
Maximum recommended working pressure Kg/cm <sup>2</sup>	Size	Type	Dimensions										Screws		Weight Kg
			A	B	C	D	E	F	G	H	I	L	Metric	Unc	

**SERIE 3000**

345	1/2"	AFS301B	30,96	24,26	38,10	54	8,74	22,8	19	13	6,22	8,75	M8x30	5/16"x1"1/4	0,12
345	3/4"	AFS302B	38,89	32,13	47,63	65	11,13	25,9	22	14	6,22	10,75	M10x35	3/8"x1"1/2	0,16
345	1"	AFS303B	45,24	38,48	52,37	70	13,08	29,2	24	16	7,49	10,75	M10x35	3/8"x1"1/2	0,22
276	1"1/4	AFS304B	51,59	43,69	58,72	79	15,09	36,3	22	14	7,49	12,00	M10x35	7/16"x1"3/4	0,30
276	1"1/4	AFS304L1075B	51,59	43,69	58,72	79	15,09	36,3	22	14	7,49	10,75	M10x35	-	0,30
276	1"1/4	AFS304L1275B	51,59	43,69	58,72	79	15,09	36,3	22	14	7,49	12,75	M12x35	-	0,30
207	1"1/2	AFS305B	61,09	50,80	69,85	94	17,86	41,1	25	16	7,49	13,50	M12x35	1/2"x1"3/4	0,43
207	1"1/2	AFS305L1475B	61,09	50,80	69,85	94	17,86	41,1	25	16	7,49	14,75	M14x45	-	0,43
207	2"	AFS306B	72,24	62,74	77,77	102	21,44	48,2	26	16	9,02	13,50	M12x35	1/2"x1"3/4	0,56
207	2"	AFS306L1475B	72,24	62,74	77,77	102	21,44	48,2	26	16	9,02	14,75	M14x45	-	0,54
172	2"1/2	AFS307B	84,94	74,93	88,90	114	25,40	54,1	38	19	9,02	13,50	M12x40	1/2"x1"3/4	0,74
172	2"1/2	AFS307L1475B	84,94	74,93	88,90	114	25,40	54,1	38	19	9,02	14,75	M14x45	-	0,74
138	3"	AFS308B	102,39	90,93	106,38	135	30,96	65,3	41	22	9,02	16,75	M16x50	5/8"x2"	1,30
34	3"1/2	AFS309B	115,10	102,36	120,65	152	34,92	69,5	28	22	10,72	17,00	M16x50	5/8"x2"	1,27
34	4"	AFS310B	127,79	115,06	130,18	162	38,88	76,0	35	25	10,72	17,00	M16x50	5/8"x2"	1,65
34	5"	AFS311B	153,19	140,46	152,40	184	46,04	90,0	41	28	10,72	17,00	M16x55	5/8"x2"1/4	2,50

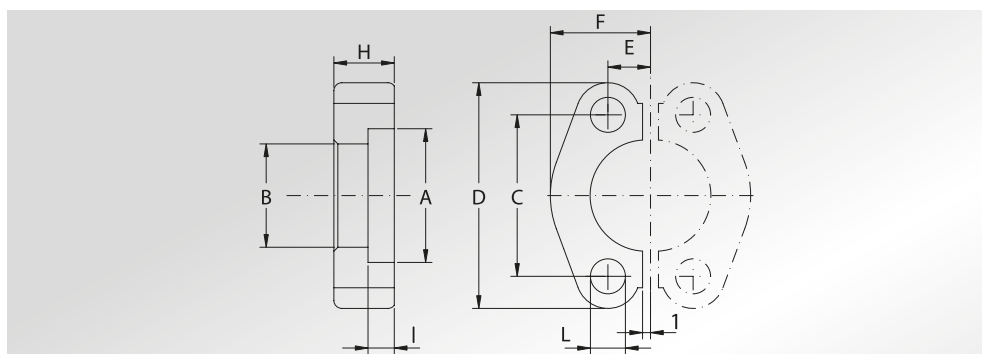
**SERIE 6000**

414	1/2"	AFS601B	32,54	24,64	40,49	56	9,12	23,6	22	16	7,24	8,75	M8x30	5/16"x1"1/4	0,16
414	3/4"	AFS602B	42,06	32,51	50,80	71	11,91	30,0	28	19	8,26	11,00	M10x35	3/8"x1"1/2	0,34
414	1"	AFS603B	48,41	38,86	57,15	81	13,89	34,8	33	24	9,02	13,00	M12x45	-	0,51
414	1"	AFS603L12B	48,41	38,86	57,15	81	13,89	34,8	33	24	9,02	12,00	-	7/16"x1"3/4	0,51
414	1"1/4	AFS604B	54,76	44,45	66,68	95	15,88	38,6	38	27	9,78	15,00	M14x45	-	0,80
414	1"1/4	AFS604L13B	54,76	44,45	66,68	95	15,88	38,6	38	27	9,78	13,50	M12x45	1/2"x1"3/4	0,80
414	1"1/2	AFS605B	64,29	51,56	79,38	113	18,26	47,5	43	30	12,07	17,00	M16x55	5/8"x2"1/4	1,44
414	2"	AFS606B	80,16	67,56	96,82	133	22,23	56,9	52	37	12,07	21,00	M20x70	3/4"x2"3/4	2,10

**SEMIFLANGE  
PIATTE TAGLIATE**



**CUT FLAT  
SPLIT FLANGES**



414	2"1/2	AFP607 *	108,5	89,50	123,8	180	29,35	76,0	-	48	20,00	26,00	M24x80	7/8"x3"1/4	4,60
414	3"	AFP608 *	132,5	114,50	152,4	208	35,7	89,0	-	58	25,00	31,00	M30x100	1"1/8"x3"1/2	6,70

DESIGNAZIONE PER ORDINE DESIGNATION FOR ORDER	Materiale / Material	
	S355	AISI 316L
Solo coppia semiflanguia Only pair cut split flange	<b>AFS...B/AFP</b>	<b>AFX.../AFPX</b>
Coppia semiflanguia completa di viti metriche, grower e o-ring Pair cut split flange complete of metric screws, grower type washers and o-ring	<b>AFS...BM/AFP...M</b>	<b>AFX...M</b>
Coppia semiflanguia completa di viti unc, grower e o-ring Pair cut split flange complete of unc screws, grower type washers and o-ring	<b>AFS...BU</b>	<b>AFX...U</b>

**NOTE / NOTES**

**QUESTO PRODOTTO E' VENDUTO A COPPIE  
THIS PRODUCT IS SOLD BY PAIRS**

Rivestimento superficiale : zincatura Cr3  
Superficial coating : zinking Cr3  
set viti unc disponibili solo in acciaio al carbonio  
unc screws set available only in carbon steel  
\* set viti disponibili solo metriche in acciaio al carbonio  
\* screws set available only metric in carbon steel  
\* NON ZINCATE  
\* NOT GALVANIZED