

## ACT Mounting Hardware Installation on Single Weld Plates



### Required components:

- 1 ACT Hexagon Head Bolt AS...W55
- 1 ACT Cover Plate GD...W55
- 1 ACT Clamp Body (2 Clamp Halves)
- 1 ACT Single Weld Plate SP...W55

Before welding, always make sure that the designated position of the ACT Weld Plate is suitable for the expected loads.

Material Code  
**W55**

## ACT Mounting Hardware Material Properties and Handling Instructions

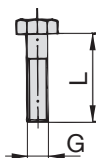
ACT Mounting Hardware is made of Stainless Steel V4A (Material Code: W55) with enhanced corrosion resistance by practically excluding metallic and non-metallic impurities during production, processing and handling.

ACT Mounting Hardware is always delivered in hermetically-sealed quality storage bags with 25 pieces each to avoid contamination during transport.

**Always make sure that ACT Mounting Hardware is stored separately from carbon steel and any other metals, and that appropriate tools are used to assemble the clamps.**

Details: [www.stauff.com/act/assembly](http://www.stauff.com/act/assembly)

## ACT Hexagon Head Bolt Type AS ... W55 (according to DIN 931 / 933)

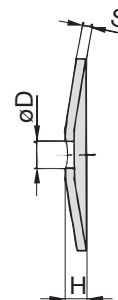
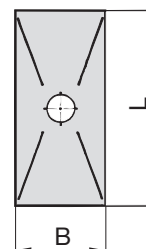


Dimensions applicable only when used with Cover Plate GD and Weld Plate SP



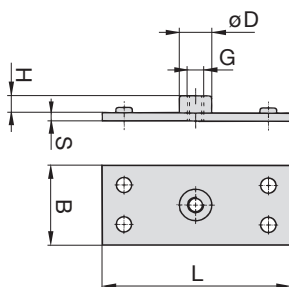
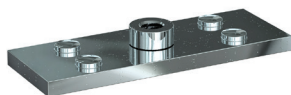
| Group STAUFF | DIN | Dimensions (mm/in)<br>Thread G x L | Ordering Code | Packaging Unit<br>(in pieces / bag) |
|--------------|-----|------------------------------------|---------------|-------------------------------------|
| 1D           | 1   | M6 x 35                            | AS-M6x35-W55  | 25                                  |
|              |     | M6 x 1.38                          |               |                                     |
| 2D           | 2   | M8 x 35                            | AS-M8x35-W55  | 25                                  |
|              |     | M8 x 1.38                          |               |                                     |
| 3D           | 3   | M8 x 45                            | AS-M8x45-W55  | 25                                  |
|              |     | M8 x 1.77                          |               |                                     |

## ACT Cover Plate Type GD ... W55



| Group STAUFF | DIN | Dimensions (mm/in) |      |     |     |     |           | Ordering Code | Packaging Unit<br>(in pieces / bag) |
|--------------|-----|--------------------|------|-----|-----|-----|-----------|---------------|-------------------------------------|
|              |     | L                  | B    | H   | S   | ØD  |           |               |                                     |
| 1D           | 1   | 34                 | 30   | 7   | 3   | 7   | GD-1D-W55 | 25            |                                     |
|              |     | 1.34               | 1.18 | .28 | .12 | .28 |           |               |                                     |
| 2D           | 2   | 52                 | 30   | 7   | 3   | 9   | GD-2D-W55 | 25            |                                     |
|              |     | 2.05               | 1.18 | .28 | .12 | .35 |           |               |                                     |
| 3D           | 3   | 65                 | 30   | 7   | 3   | 9   | GD-3D-W55 | 25            |                                     |
|              |     | 2.56               | 1.18 | .28 | .12 | .35 |           |               |                                     |

## ACT Single Weld Plate Type SP ... W55



| Group STAUFF | DIN | Dimensions (mm/in) |      |      |     |     |     | Ordering Code | Packaging Unit<br>(in pieces / bag) |
|--------------|-----|--------------------|------|------|-----|-----|-----|---------------|-------------------------------------|
|              |     | G                  | L    | B    | S   | H   | ØD  |               |                                     |
| 1D           | 1   | M6                 | 37   | 30   | 3   | 6.5 | 12  | SP-1D-M-W55   | 25                                  |
|              |     |                    | 1.46 | 1.18 | .12 | .26 | .47 |               |                                     |
| 2D           | 2   | M8                 | 55   | 30   | 5   | 6   | 14  | SP-2D-M-W55   | 25                                  |
|              |     |                    | 2.17 | 1.18 | .20 | .24 | .55 |               |                                     |
| 3D           | 3   | M8                 | 70   | 30   | 5   | 6   | 14  | SP-3D-M-W55   | 25                                  |
|              |     |                    | 2.76 | 1.18 | .20 | .24 | .55 |               |                                     |

