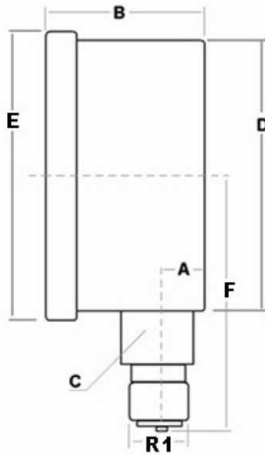


Pressure gauge DN 63 vertical connection



Accuracy: 1,6%

Dimensions: A=10
B=29
C=14
D=62
E=68
F=57

Temperature: from -10 up to +60

Fitting and internal components: Stainless steel 316L

Case: Stainless steel 304

Windshield: Polycarbonate

Part nº	R2	Scale (bar)
ZMFI6304002.5V	1/4" BSP	0-2.5
ZMFI6304004V	1/4" BSP	0-4
ZMFI6304006V	1/4" BSP	0-6
ZMFI6304010V	1/4" BSP	0-10
ZMFI6304016V	1/4" BSP	0-16
ZMFI6304025V	1/4" BSP	0-25
ZMFI6304040V	1/4" BSP	0-40
ZMFI6304060V	1/4" BSP	0-60
ZMFI6304100V	1/4" BSP	0-100
ZMFI6304160V	1/4" BSP	0-160
ZMFI6304250V	1/4" BSP	0-250
ZMFI6304400V	1/4" BSP	0-400
ZMFI6304600V	1/4" BSP	0-600

Pressure gauges AISI 316 with glycerin
Pressure gauge DN 63 with glycerin

Pressure gauge DN 63 vertical connection

Part nº	R2	Scale (bar)
---------	----	-------------

With dual bar/psi scale
IP 65