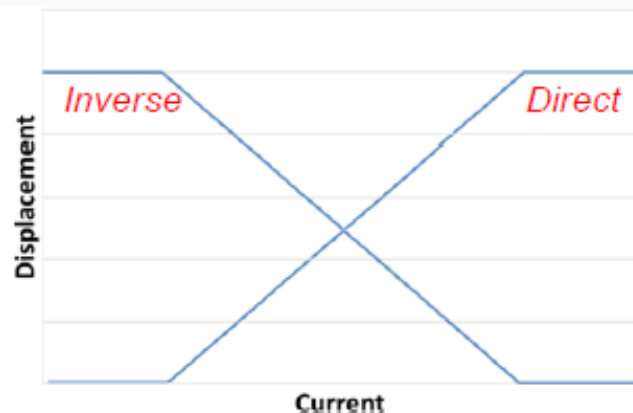
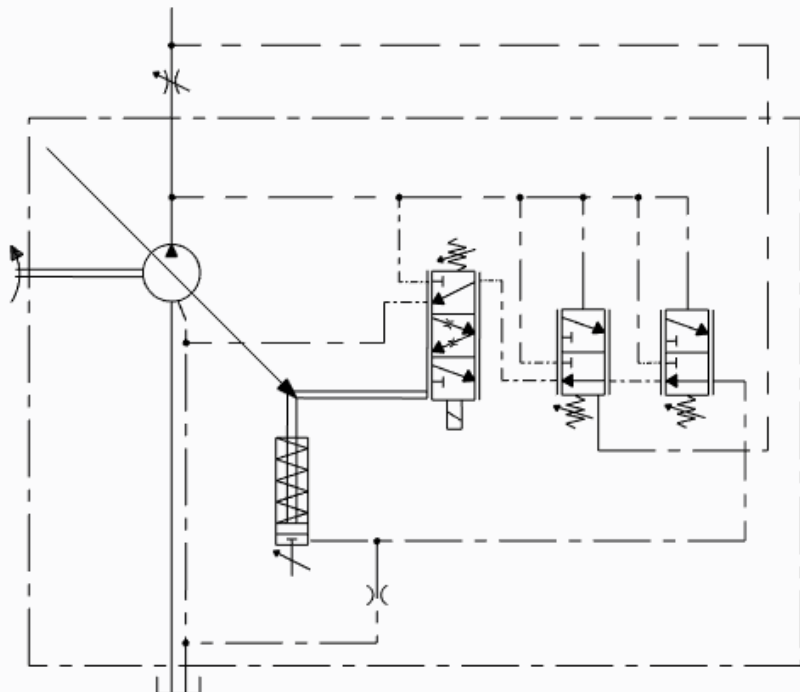




MVP DEC



DEC: Displacement Electronic Control



- The displacement of the pump is continuously regulated according to the PWM current signal.
 - This allows open loop control on pump displacement (direct regulation of pump flow) or to limit the maximum displacement (and flow) to variable values.
- DEC is available on all sizes of MVP pump range.

		DEC
Hydro-mechanical	RP Pressure	✓
	LS Flow	✓
	RN Torque	✗
Electronic	PEC Pressure	✓
	PECA Pressure + sensor	✗

Valve details



DEC valve		
<i>Displacement control</i>	Direct or Inverse	
<i>Connector type</i>	DIN or DEUTSCH	
<i>Voltage</i>	12 V	24 V
<i>Control current DIN</i>	50 ÷ 1250 mA	50 ÷ 680 mA
<i>Control current DEU</i>	50 ÷ 1760 mA	50 ÷ 940 mA
<i>Dither frequency</i>	150 ÷ 200 Hz	150 ÷ 200 Hz
<i>Resistance</i>	7.2 Ω (DIN) 3.7 Ω (DEU)	24.6 Ω (DIN) 13 Ω (DEU)
<i>Power</i>	11.3 W (DIN) 11.5 W (DEU)	11.4 W (DIN) 12.5 W (DEU)
<i>Envir. temperature</i>	-20°C ÷ +50°C	
<i>Protection class</i>	IP65	IP69K