

HS

# Housings and Cavities



*Danfoss*

## Housings and Cavities

### Quick Reference

Cavity	Order Code	Port Size	Material	Cavity	Order Code	Port Size	Material	
A1126	B5134	1 1/4 BSP	Alum	A21773	C23285	1 1/4 BSP, 1/4 BSP	Alum	
	B882	1 1/4 BSP	Steel		C23286	1 1/4 BSP, 1/4 BSP	Steel	
	B7783	#20 SAE	Alum		C23278	1 1/2 BSP, 1/4 BSP	Alum	
	B11553	#20 SAE	Steel		C23283	1 1/2 BSP, 1/4 BSP	Steel	
A12088	BXP24046-4W-S-377	1/2 BSP, 1/4 BSP	Steel		C23279	#20 SAE, #4 SAE	Alum	
	BXP24046-8T-S	#8 SAE/#4 SAE	Alum		C23284	#20 SAE, #4 SAE	Steel	
A12196	B16357	1/2 BSP, 1/4 BSP	Alum		C23287	#24 SAE, #4 SAE	Alum	
	B23615	1/2 BSP, 1/4 BSP	Steel		C23288	#24 SAE, #4 SAE	Steel	
	12007706	#8 SAE/#4 SAE	Alum		A3145	BXP23466-8W-S	1 BSP 1/4 BSP	Alum
	12007708	#8 SAE/#4 SAE	Steel			BXP23466-8W-S-377	1 BSP 1/4 BSP	Steel
B13625	1/2 BSP, 1/4 BSP	Alum	BXP23466-16T-S	1 BSP 1/4 BSP		Alum		
B13626	1/2 BSP, 1/4 BSP	Steel	BXP23466-16-S-377	1 BSP 1/4 BSP		Steel		
A12336	B10806	#8 SAE/#4 SAE	Alum	A3146	B4377	3/4 BSP	Alum	
	B10922	#8 SAE/#4 SAE	Steel		B4378	3/4 BSP	Steel	
	C13627	1/4 BSP	Alum		B10785	#12 SAE	Alum	
A12336 (Dual)	C13628	1/4 BSP	Steel	B11554	#12 SAE	Steel		
	C10807	#6 SAE/#8 SAE	Alum	A3531	B7724	1/4 BSP	Alum	
	C11561	#6 SAE/#8 SAE	Steel		B6684	3/8 BSP	Alum	
A12744	B19240	3/8 BSP	Alum	B6516	#6 SAE	Alum		
	B19241	#6 SAE	Alum	B13602	3/8 BSP	Alum		
	B19228	1/2 BSP	Alum	A5302	B13603	3/8 BSP	Steel	
	B19229	#8 SAE	Alum		B21661	#6 SAE	Alum	
12007720	1 1/4 BSP	Alum	B21660		#6 SAE	Steel		
A13098	12007722	1 1/4 BSP	Steel	B6743	3/8 BSP, 1/4 BSP	Alum		
	12007719	#4 SAE, #20 SAE	Alum	B12823	3/8 BSP, 1/4 BSP	Steel		
	12007721	#4 SAE, #20 SAE	Steel	A6610	B10536	#6 SAE, #4 SAE	Alum	
B3496	1 BSP, 1/4 BSP	Alum	B11560		#6 SAE, #4 SAE	Steel		
A16102	B3497	1 BSP, 1/4 BSP	Steel		B7884	#8 SAE, #4 SAE	Alum	
	B6807	#16 SAE, #4 SAE	Alum		B11811	#8 SAE, #4 SAE	Steel	
A16927	B11555	#16 SAE, #4 SAE	Steel	B6836	3/8 BSP	Alum		
	N/A			B13803	3/8 BSP	Steel		
A20081	B20105	3/4 BSP, 1/4 BSP	Alum	B10805	#6 SAE	Alum		
	B20106	3/4 BSP, 1/4 BSP	Steel	A6610 (Dual)	B11630	#6 SAE	Steel	
	B20107	1 BSP, 1/4 BSP	Alum		B30237	#8 SAE	Alum	
	B20108	1 BSP, 1/4 BSP	Steel		B11812	#8 SAE	Steel	
	B11946	#8 SAE, #4 SAE	Alum	A6701	A12592	1/4 BSP	Alum	
	B11947	#8 SAE, #4 SAE	Steel		A7450	3/8 BSP	Alum	
A20081 (Dual)	C20285	1 BSP	Alum	A19355	#6 SAE	Alum		
	C20287	1 BSP	Steel	A6726	12007710	3/4 BSP, 1/4 BSP	Alum	
	C30105	#8 SAE	Alum		12007715	3/4 BSP, 1/4 BSP	Steel	
C30106	#8 SAE	Steel	12007709		#4 SAE, #12 SAE	Alum		
A20090-T11A	N/A		12007712		#4 SAE, #12 SAE	Steel		
A20092-T2A	N/A		A6935		B6814	1 1/4 BSP	Alum	
A20094-T17A	N/A				B8610	1 1/4 BSP, 1/4 BSP	Steel	
A20530	12007689	3/4 BSP, 1/4 BSP		Alum	B10630	#20 SAE, #4 SAE	Alum	
	12007699	#6 SAE, #4 SAE	Steel	B11474	#20 SAE, #4 SAE	Steel		
	12007686	3/4 BSP, 1/4 BSP	Alum					
	12007694	#6 SAE, #4 SAE	Steel					

## Housings and Cavities

### Quick Reference

Cavity	Order Code	Port Size	Material	Cavity	Order Code	Port Size	Material
A6935 (Dual)	C8704	1 1/4 BSP	Alum	A881	C1084	3/8 BSP	Alum
	C8705	1 1/4 BSP	Steel		B4851	1/2 BSP	Alum
	C10811	#20 SAE	Alum		B3954	3/4 BSP	Alum
	C11564	#20 SAE	Steel		B19403	#8 SAE	Alum
A7447	B7418	1/2 BSP, 1/4 BSP	Alum		B19404	#12 SAE	Alum
	B13663	1/2 BSP	Steel		C1084	3/8 BSP	Alum
	B10712	#8 SAE	Alum		C1044	1/2 BSP	Alum
	B11565	#8 SAE	Steel		C593	1/2 BSP	Steel
A877	B6898	3/4 BSP, 1/4 BSP	Alum		C1086	3/4 BSP	Alum
	B5544	3/4 BSP, 1/4 BSP	Alum		C4917	3/4 BSP	Steel
	B8200	3/4 BSP, 1/4 BSP	Alum		B10784	#6 SAE	Alum
	B10708	#16 SAE	Alum		C7140	#8 SAE	Alum
A877 (Dual)	B11814	#16 SAE	Steel		B10506	#12 SAE	Alum
	C2543	3/4 BSP, 1/4 BSP	Steel		B10742	#12 SAE	Steel
	C1200	3/4 BSP, 1/4 BSP	Steel		B1617	1 BSP	Steel (Two #1 Ports)
	C10629	3/4 BSP, 1/4 BSP	Alum		B4596	1 BSP	Alum (Two #1 Ports)
A878	C16434	3/4 BSP, 1/4 BSP	Steel	B1037	#16 SAE	Steel (Two #1 Ports)	
	B1067	3/4 BSP	Alum	B24040	#16 SAE	Alum (Two #1 Ports)	
	B5614	3/4 BSP	Steel	A893	A1882	1/4 BSP	Steel
	B1069	1 BSP	Alum		A1883	3/8 BSP	Steel
	B542	1 BSP	Steel		A10715	#6 SAE	Alum
	B4409	#12 SAE	Alum		A7371	#6 SAE	Steel
	B10827	#12 SAE	Alum	CVA27-04	B12631	1/2 BSP	Alum
	B11801	#12 SAE	Steel		B13664	1/2 BSP	Steel
	B2216	3/4 BSP	Alum		B10820	1/2 BSP	Alum
	B7147	3/4 BSP	Steel	C-4-2	B11566	1/2 BSP	Steel
	B10623	#12 SAE	Steel		N/A		
	A879	A1485	1/4 BSP	Alum	C-8-2	02-160730	#4 SAE
A1043		3/8 BSP	Alum	02-160736		#4 SAE	Steel
A14175		3/8 BSP	Steel	02-160731		#6 SAE	Alum (Heavy Duty)
A15676		#6 SAE	Alum	02-160737		#6 SAE	Steel
A14843		#6 SAE	Steel	02-160727		1/4 BSP	Alum (Heavy Duty)
A880	B4821	1/2 BSP, 1/4 BSP	Alum	02-160732		#8 SAE	Alum (Heavy Duty)
	B4527	1/2 BSP, 1/4 BSP	Steel	02-160733		1/4 BSP	Steel
	B5466	3/4 BSP, 1/4 BSP	Alum	02-160738		#8 SAE	Steel
	B4403	3/4 BSP, 1/4 BSP	Steel	02-160728		3/8 BSP	Alum (Heavy Duty)
	B10793	#6 SAE, #4 SAE	Alum	02-160734		3/8 BSP	Steel
	B6584	#8 SAE, #4 SAE	Alum	02-160741		#4 SAE	Alum (Heavy Duty)
	B7883	#12 SAE, #4 SAE	Alum	02-160745		#4 SAE	Steel
	B11379	#12 SAE, #4 SAE	Steel	02-160742	#6 SAE	Alum (Heavy Duty)	
C-8-3				02-160746	#6 SAE	Steel	
				02-160739	1/4 BSP	Alum (Heavy Duty)	
				02-160743	1/4 BSP	Steel	
				02-160740	3/8 BSP	Alum (Heavy Duty)	
				02-160744	3/8 BSP	Steel	

\*Heavy Duty housings are rated to 1 million pressure cycles using NFPA fatigue test standards

## Housings and Cavities

### Quick Reference

Cavity	Order Code	Port Size	Material	Cavity	Order Code	Port Size	Material
C-8-4	02-160751	1/4 BSP	Steel	C-10-4	02-179705	3/8 BSP	Alum
	02-160752	3/8 BSP	Steel		566161	#6 SAE	Alum
	02-160753	#4 SAE	Steel		02-175137	#6 SAE	Steel
	02-160754	#6 SAE	Steel		02-175138	#8 SAE	Steel
	02-160747	1/4 BSP	Alum (Heavy Duty)		876709	1/4 BSP	Alum (Heavy Duty)
	02-160748	3/8 BSP	Alum (Heavy Duty)		02-175139	1/4 BSP	Steel
	02-160749	#4 SAE	Alum (Heavy Duty)		876715	3/8 BSP	Alum (Heavy Duty)
	02-160750	#6 SAE	Alum (Heavy Duty)		02-175140	3/8 BSP	Steel
C-8-55	4999357-001	#4 SAE	Alum	876708	#6 SAE	Alum (Heavy Duty)	
	4999358-001	#4 SAE	Steel	876713	#8 SAE	Alum (Heavy Duty)	
	4999357-002	#6 SAE	Alum	C-10-55	5994133-001	#6 SAE, #4 SAE	Alum
	4999358-002	#6 SAE	Steel		5994134-001	#6 SAE, #4 SAE	Steel
	4999357-003	1/4 BSP	Alum		5994133-002	#8 SAE, #4 SAE	Alum
	4999358-003	1/4 BSP	Steel		5994134-002	#8 SAE, #4 SAE	Steel
	4999357-004	3/8 BSP, 1/4 BSP	Alum		5994133-003	1/2 BSP, 1/4 BSP	Alum
	4999358-004	3/8 BSP, 1/4 BSP	Steel		5994134-003	1/2 BSP, 1/4 BSP	Steel
C-10-2	02-175462	3/8 BSP	Alum		02-172062	1/2 BSP	Steel
	876702	1/4 BSP	Alum (Heavy Duty)		02-169665	3/4 BSP	Steel
	02-175102	1/4 BSP	Steel	02-161117	3/4 BSP	Alum (Heavy Duty)	
	876703	3/8 BSP	Alum (Heavy Duty)	02-169744	#10 SAE	Steel	
	02-175103	3/8 BSP	Steel	02-169782	#12 SAE	Steel	
	876700	#6 SAE	Alum (Heavy Duty)	02-160640	#10 SAE	Alum (Heavy Duty)	
	876701	#8 SAE	Alum (Heavy Duty)	02-160644	#12 SAE	Alum (Heavy Duty)	
	566151	#6 SAE	Alum	02-161118	1/2 BSP	Alum (Heavy Duty)	
	02-175100	#6 SAE	Steel	02-161116	1/2 BSP	Alum (Heavy Duty)	
	02-175101	#8 SAE	Steel	02-172512	1/2 BSP	Steel	
C-10-3	566162	#6 SAE	Alum	02-161115	3/4 BSP	Alum (Heavy Duty)	
	876705	1/4 BSP	Alum (Heavy Duty)	02-162922	3/4 BSP	Steel	
	876714	3/8 BSP	Alum (Heavy Duty)	C-12-2U	02-160641	#10 SAE	Alum (Heavy Duty)
	876704	#6 SAE	Alum (Heavy Duty)		02-169817	#10 SAE	Steel
	876711	#8 SAE	Alum (Heavy Duty)		02-160645	#12 SAE	Alum (Heavy Duty)
	02-175127	1/4 BSP	Steel		02-169790	#12 SAE	Steel
	02-175128	3/8 BSP	Steel		02-169815	1/2 BSP	Steel
	02-175124	#6 SAE	Steel		02-169814	3/4 BSP	Steel
	02-175125	#8 SAE	Steel		02-161070	#10 SAE	Steel
	02-173358	3/8 BSP	Alum		02-169816	#12 SAE	Steel
876707	1/4 BSP	Alum (Heavy Duty)	C-12-3		02-161817	1/2 BSP	Alum (Heavy Duty)
876710	3/8 BSP, 1/4 BSP	Alum (Heavy Duty)			02-161816	3/4 BSP	Alum (Heavy Duty)
02-163313	3/8 BSP, 1/4 BSP	Steel		02-160642	#10 SAE	Alum (Heavy Duty)	
02-163324	1/2 BSP, 1/4 BSP	Steel		02-160646	#12 SAE	Alum (Heavy Duty)	
876706	#6 SAE	Alum (Heavy Duty)					
876712	#6 SAE, #8 SAE	Alum (Heavy Duty)					
02-171961	#6 SAE	Steel					
02-163322	#8 SAE, #6 SAE	Steel					
02-163323	#10 SAE, #6 SAE	Steel					

\*Heavy Duty housings are rated to 1 million pressure cycles using NFPA fatigue test standards

## Housings and Cavities

### Quick Reference

Cavity	Order Code	Port Size	Material	Cavity	Order Code	Port Size	Material
C-12-3S	02-178270	1/2 BSP, 3/8 BSP	Alum (Heavy Duty)	C-16-3S	02-160676	1/2 BSP, 3/8 BSP	Alum (Heavy Duty)
	02-178271	3/4 BSP, 3/8 BSP	Alum (Heavy Duty)		02-175118	1/2 BSP, 3/8 BSP	Steel
	02-178268	#10 SAE, #6 SAE	Alum (Heavy Duty)		876726	3/4 BSP, 3/8 BSP	Alum (Heavy Duty)
	02-178269	#12 SAE, #6 SAE	Alum (Heavy Duty)		02-175119	3/4 BSP, 3/8 BSP	Steel
	02-160994	1/2 BSP, 3/8 BSP	Steel		876725	#10 SAE, #6 SAE	Alum (Heavy Duty)
	02-160995	3/4 BSP, 3/8 BSP	Steel		876727	#12 SAE, #6 SAE	Alum (Heavy Duty)
	02-160996	#10 SAE, #6 SAE	Steel		02-175116	#10 SAE, #6 SAE	Steel
02-160997	#12 SAE, #6 SAE	Steel	02-175117	#12 SAE, #6 SAE	Steel		
C-12-4	5986431-001	1/2 BSP	Alum (Heavy Duty)	C-16-3SU	02-166607	1/2 BSP	Alum
	5986432-001	3/4 BSP	Alum (Heavy Duty)		02-165500	1/2 BSP	Steel
	5991073-001	3/4 BSP	Steel		02-161592	3/4 BSP	Alum
	5986433-001	#8 SAE	Alum (Heavy Duty)		02-164931	3/4 BSP	Steel
	5986434-001	#10 SAE	Alum (Heavy Duty)		02-170238	#10 SAE	Alum
	5991074-001	#10 SAE	Steel		02-161983	#10 SAE	Steel
	5986436-001	#12 SAE	Alum (Heavy Duty)		02-166609	#12 SAE	Alum
5991075-001	#12 SAE	Steel	02-161982	#12 SAE	Steel		
C-12-5S	4998820-001	#10 SAE, #4 SAE	Alum (Heavy Duty)	C-16-4	02-185448	1/2 BSP	Alum
	4998821-001	#10 SAE, #4 SAE	Steel		02-180050	1/2 BSP	Steel
	4998820-002	#12 SAE, #4 SAE	Alum (Heavy Duty)		02-185449	3/4 BSP	Alum
	4998821-002	#12 SAE, #4 SAE	Steel		02-180051	3/4 BSP	Steel
	4998820-003	1/2 BSP, 1/4 BSP	Alum (Heavy Duty)		02-185450	#10 SAE	Alum
	4998821-003	1/2 BSP, 1/4 BSP	Steel		02-180048	#10 SAE	Steel
	4998820-004	3/4 BSP, 1/4 BSP	Alum (Heavy Duty)		02-185447	#12 SAE	Alum
4998821-004	3/4 BSP, 1/4 BSP	Steel	02-180049	#12 SAE	Steel		
C-16-2	02-175463	3/4 BSP	Alum	C-16-5S	02-175141	#10 SAE	Steel
	02-175104	#10 SAE	Steel		02-175142	#12 SAE	Steel
	02-175107	3/4 BSP	Steel		566411	#12 SAE	Alum
	566149	#12 SAE	Alum		02-175468	3/4 BSP	Alum
	02-175105	#12 SAE	Steel		876729	#10 SAE	Alum (Heavy Duty)
	876716	1/2 BSP	Alum (Heavy Duty)		876731	#12 SAE	Alum (Heavy Duty)
	876718	3/4 BSP	Alum (Heavy Duty)		876728	1/2 BSP	Alum (Heavy Duty)
02-175106	1/2 BSP	Steel	02-175143	1/2 BSP	Steel		
876717	#10 SAE	Alum (Heavy Duty)	876730	3/4 BSP	Alum (Heavy Duty)		
566113	#12 SAE	Alum (Heavy Duty)	02-175144	3/4 BSP	Steel		
C-16-3	02-175465	3/4 BSP	Alum	C-16-5S	4994880-001	#12 SAE, #4 SAE	Alum (Heavy Duty)
	876720	1/2 BSP	Alum (Heavy Duty)		4994881-001	#12 SAE, #4 SAE	Steel
	02-175131	1/2 BSP	Steel		4994880-002	#16 SAE, #4 SAE	Alum (Heavy Duty)
	876722	3/4 BSP	Alum (Heavy Duty)		4994881-002	#16 SAE, #4 SAE	Steel
	02-175132	3/4 BSP	Steel		4994880-003	3/4 BSP, 1/4 BSP	Alum (Heavy Duty)
	876721	#10 SAE	Alum (Heavy Duty)		4994881-003	3/4 BSP, 1/4 BSP	Steel
	876723	#12 SAE	Alum (Heavy Duty)		4994880-004	1 BSP, 1/4 BSP	Alum (Heavy Duty)
02-175129	#10 SAE	Steel	4994881-004	1 BSP, 1/4 BSP	Steel		
566152	#12 SAE	Alum					
02-175130	#12 SAE	Steel					

\*Heavy Duty housings are rated to 1 million pressure cycles using NFPA fatigue test standards

## Housings and Cavities

### Quick Reference

Cavity	Order Code	Port Size	Material	Cavity	Order Code	Port Size	Material	
C-20-2	02-175464	1 BSP	Alum	CP12-2	CP12-2-S6B	3/4 BSP	Steel	
	02-175110	3/4 BSP	Steel		CP12-2-6B	3/4 BSP	Alum	
	02-175111	1 BSP	Steel		CP12-2-S12S	#12 SAE	Steel	
	02-175108	#12 SAE	Steel		CP12-2-S10S	#10 SAE	Steel	
	02-175109	#16 SAE	Steel		CP12-2-12S	#12 SAE	Alum	
	566409	#16 SAE	Alum		CP12-2-10S	#10 SAE	Alum	
	876732	3/4 BSP	Alum (Heavy Duty)		CP12-2-4B	1/2 BSP	Alum	
	876734	1 BSP	Alum (Heavy Duty)		CP12-2-S4B	1/2 BSP	Steel	
	876733	#12 SAE	Alum (Heavy Duty)		CP12-3-4B	1/2 BSP	Alum	
	876735	#16 SAE	Alum (Heavy Duty)		CP12-3-S12S	#12 SAE	Steel	
C-20-3	N/A		CP12-3	CP12-3-6B	3/4 BSP	Alum		
876740	3/4 BSP, 3/8 BSP	Alum (Heavy Duty)		CP12-3-12S	#12 SAE	Alum		
02-175122	3/4 BSP, 3/8 BSP	Steel		CP12-3-S10S	#10 SAE	Steel		
876742	1 BSP, 3/8 BSP	Alum (Heavy Duty)		CP12-3-10S	#10 SAE	Alum		
02-175123	1 BSP, 3/8 BSP	Steel		CP12-3M-10S	#10 SAE	Alum		
C-20-3S	876741	#12 SAE, #6 SAE	Alum (Heavy Duty)	CP12-3M	CP12-3M-12S	#12 SAE	Alum	
	876743	#16 SAE, #6 SAE	Alum (Heavy Duty)		CP12-3M-6B	3/4 BSP	Alum	
	02-175120	#12 SAE, #6 SAE	Steel		CP12-3M-S12S	#12 SAE	Steel	
	02-175121	#16 SAE, #6 SAE	Steel		CP12-3S-6B/2B	3/4 BSP, 1/4 BSP	Alum	
	566412	#16 SAE	Alum		CP12-3S-4B/2B	1/2 BSP, 1/4 BSP	Alum	
C-20-4	02-175469	1 BSP	Alum	CP12-3S	CP12-3S-10S/4S	#10 SAE, #4 SAE	Alum	
	876745	#12 SAE	Alum (Heavy Duty)		CP12-3S-12S/4S	#12 SAE, #4 SAE	Alum	
	876747	3/4 BSP	Alum (Heavy Duty)		CP12-3S-S6B/2B	3/4 BSP, 1/4 BSP	Steel	
	876744	3/4 BSP	Alum (Heavy Duty)		CP12-3S-S12S/4S	#12 SAE, #4 SAE	Steel	
	876746	1 BSP	Alum (Heavy Duty)		CP12-4-3B-X1	3/8 BSP	Alum (No #1 Port)	
	4998822-001	#12 SAE, #4 SAE	Alum (Heavy Duty)		CP12-4-8S-X1	#8 SAE	Alum (No #1 Port)	
	4998823-001	#12 SAE, #4 SAE	Steel		CP12-4-8S/4S	#8 SAE, #4 SAE	Alum	
C-20-5S	4998822-002	#16 SAE, #4 SAE	Alum (Heavy Duty)	CP12-4	CP12-4-8S	#8 SAE	Alum	
	4998823-002	#16 SAE, #4 SAE	Steel		CP12-4-10S	#10 SAE	Alum	
	4998822-003	3/4 BSP, 1/4 BSP	Alum (Heavy Duty)		CP12-4-4B	1/2 BSP	Alum	
	4998823-003	3/4 BSP, 1/4 BSP	Steel		CP12-4-3B	3/8 BSP	Alum	
	4998822-004	1 BSP, 1/4 BSP	Alum (Heavy Duty)		CP12-4-10S-X1	#10 SAE	Alum (No #1 Port)	
	4998823-004	1 BSP, 1/4 BSP	Steel		CP12-4-10S/4S	#10 SAE, #4 SAE	Alum	
	CP04-2	CP04-2-2B	1/4 BSP		Alum	CP12-4-4B-X1	1/2 BSP	Alum (No #1 Port)
	CP04-2-4S	#4 SAE	Alum		CP16-4-12S-X1	#12 SAE	Alum (No #1 Port)	
CP04-3	CP04-3-2B	1/4 BSP	Alum	CP16-4/ SDC16-4	CP16-4-16S-X1	#16 SAE	Alum (No #1 Port)	
	CP04-3-4S	#4 SAE	Alum		CP16-4-6B	3/4 BSP	Alum	
CP08-3L	CP08-3L-3B	3/8 BSP	Alum		CP16-4-8B	1 BSP	Alum	
	CP08-3L-4S	#4 SAE	Alum		CP16-4-12S	#12 SAE	Alum	
	CP08-3L-2B	1/4 BSP	Alum		CP16-4-16S	#16 SAE	Alum	
	CP08-3L-6S	#6 SAE	Alum					
	CP08-3L-S6S	#6 SAE	Steel					
	CP08-3L-S3B	3/8 BSP	Steel					

\*Heavy Duty housings are rated to 1 million pressure cycles using NFPA fatigue test standards

## Housings and Cavities

### Quick Reference

Cavity	Order Code	Port Size	Material	Cavity	Order Code	Port Size	Material
NCS04/2	NCS04/2-LG2-1/4	1/4 BSP	Alum (Two #1 Ports)	NCS06/4	NCS06/4-LD-3/8	3/8 BSP	Alum (No #1 Port)
	NCS04/2-LG2-6S	#6 SAE	Alum (Two #1 Ports)		NCS06/4-LD-1/2	1/2 BSP	Alum (No #1 Port)
	NCS04/2-LG2-4S	#4 SAE	Alum (Two #1 Ports)		NCS06/4-L-1/2	1/2 BSP	Alum
	NCS04/2-DG-6S	#6 SAE	Alum		NCS06/4-L-8S	#8 SAE	Alum
	NCS04/2-DG-1/4	1/4 BSP	Alum		NCS06/4-L-3/8	3/8 BSP	Alum
	NCS04/2-DG-4S	#4 SAE	Alum		NCS06/4-L-6S	#6 SAE	Alum
	NCS04/2-LG1-6S	#6 SAE	Alum (Two #2 Ports)		NCS12/2-DG-12S	#12 SAE	Alum
NCS04/3	NCS04/2-LG1-1/4	1/4 BSP	Alum (Two #2 Ports)	NCS12/2-DG-3/4	3/4 BSP	Alum	
	NCS04/2-LG1-4S	#4 SAE	Alum (Two #2 Ports)	NCS12/2-DG-8S	#8 SAE	Alum	
	NCS04/3-DI-1/4	1/4 BSP	Alum	NCS12/2-DG-1/2	1/2 BSP	Alum	
	NCS04/3-DI-3/8	3/8 BSP	Alum	NCS12/2-LG1-1/2	1/2 BSP	Alum (Two #2 Ports)	
	NCS04/3-DL-1/4	1/4 BSP	Alum (Dual)	NCS12/2-LG1-3/4	3/4 BSP	Alum (Two #2 Ports)	
	NCS04/3-DL-4S	#4 SAE	Alum (Dual)	NCS12/2-LG1-8S	#8 SAE	Alum (Two #2 Ports)	
	NCS04/3-DL-6S	#6 SAE	Alum (Dual)	NCS12/2-LG1-12S	#12 SAE	Alum (Two #2 Ports)	
NCS06/2	NCS04/3-SE-4S	#4 SAE	Alum	NCS12/2-LG2-8S	#8 SAE	Alum (Two #1 Ports)	
	NCS04/3-SE-6S	#6 SAE	Alum	NCS12/2-LG2-3/4	3/4 BSP	Alum (Two #1 Ports)	
	NCS04/3-SE-1/4	1/4 BSP	Alum	NCS12/2-LG2-8S	#8 SAE	Alum (Two #1 Ports)	
	NCS04/3-SI-4S	#4 SAE	Alum (Two #1 Ports)	NCS12/2-LG2-1/2	1/2 BSP	Alum (Two #1 Ports)	
	NCS04/3-SI-6S	#6 SAE	Alum (Two #1 Ports)	NCS12/3-DL-12S	#12 SAE	Alum (Dual)	
	NCS04/3-SI-1/4	1/4 BSP	Alum (Two #1 Ports)	NCS12/3-DL-8S	#8 SAE	Alum (Dual)	
	NCS06/2-LG2-8S	#8 SAE	Alum (Two #1 Ports)	NCS12/3-DL-1/2	1/2 BSP	Alum (Dual)	
NCS06/3	NCS06/2-LG2-1/2	1/2 BSP	Alum (Two #1 Ports)	NCS12/3-DL-3/4	3/4 BSP	Alum (Dual)	
	NCS06/2-DG-3/8	3/8 BSP	Alum	NCS12/3-SE-12S	#12 SAE	Alum	
	NCS06/2-DG-6S	#6 SAE	Alum	NCS12/3-SE-3/4	3/4 BSP	Alum	
	NCS06/2-DG-1/2	1/2 BSP	Alum	NCS12/3-SE-1/2	1/2 BSP	Alum	
	NCS06/2-DG-8S	#8 SAE	Alum	NCS12/3-SE-8S	#8 SAE	Alum	
	NCS06/2-LG2-6S	#6 SAE	Alum (Two #1 Ports)	NCS12/3-SI-1/2	1/2 BSP	Alum (Two #1 Ports)	
	NCS06/2-LG2-3/8	3/8 BSP	Alum (Two #1 Ports)	NCS12/3-SI-12S	#12 SAE	Alum (Two #1 Ports)	
NCS06/4	NCS06/2-LG2-3/8	3/8 BSP	Alum (Two #1 Ports)	NCS12/3-SI-3/4	3/4 BSP	Alum (Two #1 Ports)	
	NCS06/2-LG1-1/2	1/2 BSP	Alum (Two #2 Ports)	NCS12/3-SI-8S	#8 SAE	Alum (Two #1 Ports)	
	NCS06/2-LG1-8S	#8 SAE	Alum (Two #2 Ports)	NCS12/4-L-1/2	1/2 BSP	Alum	
	NCS06/2-LG1-3/8	3/8 BSP	Alum (Two #2 Ports)	NCS12/4-L-3/4	3/4 BSP	Alum	
	NCS06/3-DL-1/2	1/2 BSP	Alum (Dual)	NCS12/4-L-8S	#8 SAE	Alum	
	NCS06/3-DL-8S	#8 SAE	Alum (Dual)	NCS12/4-L-12S	#12 SAE	Alum	
	NCS06/3-SE-8S	#8 SAE	Alum	NCS12/4-HD-1/2	1/2 BSP	Alum (No Port #1)	
NCS06/5	NCS06/3-SE-1/2	1/2 BSP	Alum	NCS12/4-L-S12S	#12 SAE	Steel	
	NCS06/3-SE-3/8	3/8 BSP	Alum	NCS12/5-6B/2B	3/4 BSP, 1/4 BSP	Alum	
	NCS06/3-SE-6S	#6 SAE	Alum	NCS12/5-6B/3B	3/4 BSP, 3/8 BSP	Alum	
	NCS06/3-SE-S6S	#6 SAE	Steel	NCS12/5-10S/6S	#10 SAE, #6 SAE	Alum	
	NCS06/3-SI-3/8	3/8 BSP	Alum (Two #1 Ports)	NCS12/5-12S/6S	#12 SAE, #6 SAE	Alum	
	NCS06/3-SI-6S	#6 SAE	Alum (Two #1 Ports)	NCS12/5-S10S/6S	#10 SAE, #6 SAE	Steel	
	NCS06/3-SI-1/2	1/2 BSP	Alum (Two #1 Ports)	NCS12/5-S12S/6S	#12 SAE, #6 SAE	Steel	
SDC08-2	NCS06/3-SI-8S	#8 SAE	Alum (Two #1 Ports)	SDC08-2-DG2B	1/4 BSP	Alum	
	NCS06/3-DL-6S	#6 SAE	Alum (Dual)	SDC08-2-DG3B	3/8 BSP	Alum	
	NCS06/3-DL-3/8	3/8 BSP	Alum (Dual)	SDC08-2-LG13B	3/8 BSP	Alum (Two #2 Ports)	
	CP08-2	SDC08-2-LG23B	3/8 BSP	Alum (Two #1 Ports)	CP08-2-4S	#4 SAE	Alum
		CP08-2-6S	#6 SAE	Alum	CP08-2-6S	#6 SAE	Alum
		CP08-2-8S	#8 SAE	Alum	CP08-2-54S	#4 SAE	Steel
		CP08-2-10S	#10 SAE	Alum			
CP08-2-12S		#12 SAE	Alum				
CP08-2-15S		#15 SAE	Alum				
CP08-2-20S		#20 SAE	Alum				

## Housings and Cavities

### Quick Reference

Cavity	Order Code	Port Size	Material	Cavity	Order Code	Port Size	Material
SDC08-3	SDC08-3-SI2B	1/4 BSP	Alum (Two #1 Ports)	SDC10-35	SDC10-35-SE3B	3/8 BSP	Alum
	SDC08-3-SE2B	1/4 BSP	Alum		SDC10-35-SE4B	1/2 BSP	Alum
	SDC08-3-SE2B	1/4 BSP	Steel		SDC10-35-SES3B	3/8 BSP	Steel
	SDC08-3-SE3B	3/8 BSP	Alum		SDC10-35-SES4B	1/2 BSP	Steel
	CP08-3-S6S	#6 SAE	Steel		SDC10-35-10S/6S	#10 SAE, #6 SAE	Alum
	CP08-3-S4S	#4 SAE	Steel		SDC10-35-8S/6S	#8 SAE, #6 SAE	Alum
	CP08-3-6S	#6 SAE	Alum		SDC10-35-S4B/2B	1/2 BSP, 1/4 BSP	Steel
SDC08-4	CP08-3-4S	#4 SAE	Alum	SDC10-35-S8S/6S	#8 SAE, #6 SAE	Steel	
	CP08-4-6S	#6 SAE	Alum	SDC10-35-6S	#6 SAE	Alum	
	CP08-4-4S	#4 SAE	Alum	SDC10-35-S6S	#6 SAE	Steel	
	CP08-4-2B	1/4 BSP	Alum	CP10-4-8S-X1	#8 SAE	Alum (No #1 Port)	
	CP08-4-S3B	3/8 BSP	Steel	CP10-4-6S-X1	#6 SAE	Alum (No #1 Port)	
SDC10-2	SDC08-4-L2B	1/4 BSP	Alum	CP10-4-6S	#6 SAE	Alum	
	CP10-2-6S	#6 SAE	Alum	CP10-4-8S	#8 SAE	Alum	
	CP10-2-8S	#8 SAE	Alum	CP10-4-S6S	#6 SAE	Steel	
	CP10-2-S6S	#6 SAE	Steel	CP10-4-S8S	#8 SAE	Steel	
	CP10-2-S8S	#8 SAE	Steel	SDC10-4-8S	#8 SAE	Alum	
	SDC10-2-DG3B	3/8 BSP	Alum	SDC10-4-S3B	3/8 BSP	Steel	
	SDC10-2-DG4B	1/2 BSP	Alum	SDC10-4-S4B	1/2 BSP	Steel	
	SDC10-2-S3B	3/8 BSP	Steel	SDC10-4-S6S	#6 SAE	Steel	
	SDC10-2-S4B	1/2 BSP	Steel	SDC10-4-S8S	#8 SAE	Steel	
	SDC10-2-6S	#6 SAE	Alum	SDC10-4-HD3B	3/8 BSP	Alum (No #1 Port)	
SDC10-3	SDC10-2-8S	#8 SAE	Alum	SDC10-4-L3B	3/8 BSP	Alum	
	SDC10-2-S6S	#6 SAE	Steel	SDC10-4-L4B	1/2 BSP	Alum	
	SDC10-2-S8S	#8 SAE	Steel	SDC10-4-6S	#6 SAE	Alum	
	SDC10-2-LG14B	1/2 BSP	Alum (Two #2 Ports)	SDC10-5-6S	#6 SAE	Alum	
	SDC10-2-LG24B	1/2 BSP	Alum (Two #1 Ports)	SDC10-5-8S	#8 SAE	Alum	
	CP10-3-S6S	#6 SAE	Steel	SDC10-5-S8S	#8 SAE	Steel	
	CP10-3-6S	#6 SAE	Alum	SDC10-5-L3B	3/8 BSP	Alum	
	CP10-3-8S	#8 SAE	Alum	SDC10-5-L4B	1/2 BSP	Alum	
	CP10-3-S8S	#8 SAE	Steel	SDC10-5-S4B	1/2 BSP	Steel	
	SDC10-3-SI3B	3/8 BSP	Alum (Two #1 Ports)	SDC12-2-DG4B	1/2 BSP	Alum	
SDC10-35	SDC10-3-SI4B	1/2 BSP	Alum (Two #1 Ports)	SDC12-2-DG6B	3/4 BSP	Alum	
	SDC10-3-SE4B	1/2 BSP	Alum	SDC12-2-LG16B	3/4 BSP	Alum (Two #2 Ports)	
	SDC10-3-SE3B	3/8 BSP	Alum	SDC12-2-LG26B	3/4 BSP	Alum (Two #1 Ports)	
	SDC10-3-S3B	3/8 BSP	Steel	SDC12-2-10S	#10 SAE	Alum	
	SDC10-3-6S	#6 SAE	Alum	SDC12-2-12S	#12 SAE	Alum	
	SDC10-3-8S	#8 SAE	Alum	SDC12-3-10S	#10 SAE	Alum	
	SDC10-3-S6S	#6 SAE	Steel	SDC12-3-12S	#12 SAE	Alum	
	SDC10-3-S8S	#8 SAE	Steel	SDC12-3-S10S	#10 SAE	Steel	
				SDC12-3-S12S	#12 SAE	Steel	
				SDC12-3-HE-1/2	1/2 BSP	Alum	
			SDC12-3-HE-3/4	3/4 BSP	Alum		

## Housings and Cavities

### Quick Reference

Cavity	Order Code	Port Size	Material
SDC16-2	SDC16-2-HG6B	3/4 BSP	Alum
	SDC16-2-12S	#12 SAE	Alum
	SDC16-2-HG8B	1 BSP	Alum
	SDC16-2-16S	#16 SAE	Alum
	SDC16-2-56B	3/4 BSP	Steel
	SDC16-2-S12S	#12 SAE	Steel
	SDC16-2-S8B	1 BSP	Steel
	SDC16-2-S16S	#16 SAE	Steel
	CP16-2-12S	#12 SAE	Alum
	CP16-2-16S	#16 SAE	Alum
	CP16-2-S16S	#16 SAE	Steel
	CP16-2-6B	3/4 BSP	Alum
	CP16-2-8B	1 BSP	Alum
	SDC16-2-HG1-8B	1 BSP	Alum (Two #2 Ports)
SDC16-3	SDC16-3-HE-8B	1 BSP	Alum
	SDC16-3-HE-6B	3/4 BSP	Alum
	SDC16-3-HE-S8B	1 BSP	Steel
	SDC16-3-HI-8B	1 BSP	Alum (Two #1 Ports)
	CP16-3-12S	#12 SAE	Alum
	CP16-3-16S	#16 SAE	Alum
SDC16-3S	CP16-3-6B	3/4 BSP	Alum
	CP16-3S-6B/2B	3/4 BSP, 1/4 BSP	Alum
	CP16-3S-12S/4S	#12 SAE, #4 SAE	Alum
	CP16-3S-8B/2B	1 BSP, 1/4 BSP	Alum
SDC20-2	CP16-3S-16S/4S	#16 SAE, #4 SAE	Alum
	SDC20-2-8B	1 BSP	Alum
	SDC20-2-S8B	1 BSP	Steel
	SDC20-2-10B	1 1/4 BSP	Alum
	SDC20-2-S10B	1 1/4 BSP	Steel
	SDC20-2-16S	#16 SAE	Alum
	SDC20-2-20S	#20 SAE	Alum
	SDC20-2-S20S	#20 SAE	Steel
	CP20-2-16S	#16 SAE	Alum
	CP20-2-8B	1 BSP	Alum
	CP20-2-S20S	#20 SAE	Steel
	SDC20-3	CP20-3-20S	#20 SAE
CP20-3-20S/4S		#20 SAE, #4 SAE	Alum
CP20-3-16S/4S		#16 SAE, #4 SAE	Alum
CP20-3-16S		#16 SAE	Alum
CP20-3-10B/2B		1 1/4 BSP, 1/4 BSP	Alum
CP20-3-10B		1 1/4 BSP	Alum
CP20-3-8B		1 BSP	Alum
SDC20-4	CP20-4-20S	#20 SAE	Alum
	CP20-4-S16S-X1	#16 SAE	Steel (No #1 Port)
	CP20-4-8B-X1	1 BSP	Alum (No #1 Port)
	CP20-4-8B	1 BSP	Alum
	CP20-4-16S-X1	#16 SAE	Alum (No #1 Port)
	CP20-4-20S/4S	#20 SAE, #4 SAE	Alum
	CP20-4-10B	1 1/4 BSP	Alum
	CP20-4-20S-X1	#20 SAE	Alum (No #1 Port)
	CP20-4-10B-X1	1 1/4 BSP	Alum (No #1 Port)
	CP20-4-16S	#16 SAE	Alum
	CP20-4-16S/4S	#16 SAE, #4 SAE	Alum
	CP20-4-S16S	#16 SAE	Steel
	CP20-4-S20S	#20 SAE	Steel
	VME08	VME 08-LG-6B	3/4 BSP
VME 08-LG-12S		#12 SAE	Alum
VME 08-DG-6B		3/4 BSP	Alum
VME 08-DG-12S		#12 SAE	Alum

## Housings and Cavities

### Cartridge Valve Cavity Compatibility

#### Industry common cavities

Cavities which are based on SAE UNF threads and identified by a SDCxx-reference. In previous versions of the Danfoss cartridge valve technical literature, industry common cavities have also been identified with a C-xx-x reference.

#### Danfoss special cavities

These cavities are indicated by the following formats: NCSxx/x, CPxx-x or Axxxx. These references are unique to Danfoss cartridge valves, as indicated on the specific catalog pages.

Danfoss recommends the use of **industry common cavities** according to the SDCxx-x specification shown in the catalog. However, in many cases it is acceptable to use an industry common cavity according to the C-xx-x specifications found in previous editions of the technical literature. This means that a valve which is designated for use with a SDCxx-x cavity may be installed in the corresponding C-xx-x cavity (e.g.: SDC08-4 / C-8-4, SDC10-2 / C-10-2, etc), save for those listed below.

#### Exceptions to cavity interchangeability

- 4-size (7/16-20 UNF thread), 12-size (1 1/16-12 UNF thread), and 20-3S cavities are never interchangeable. For correct valve function, it is mandatory to use the cavity indicated on the catalog page.
- 10-size (7/8-14 UNF thread), 4-port cavities (also called 10-4 cavities), are interchangeable with limitations.

#### Interchangeable

SDC08-2	C-8-2
SDC08-3	C-8-3
SDC08-4	C-8-4
SDC10-2	C-10-2
SDC10-3	C-10-3
SDC10-3S	C-10-3S
SDC10-5	C-10-5S
SDC16-2	C-16-2
SDC16-3	C-16-3
SDC16-3S	C-16-3S
SDC16-4	C-16-4
SDC20-2	C-20-2
SDC20-3	C-20-3
SDC20-4	C-20-4

#### Non-Interchangeable

CP04-2	C-4-2
SDC10-4	C-10-4
CP12-2 / SDC12-2	C-12-2
SDC12-3 / CP12-3	C-12-3
SDC20-3S	C-20-3S

All 10-size, 4-way cartridges in the Danfoss catalog will fit a SDC10-4 cavity; however, **some 10-size, 4-way cartridges in the catalog will not function correctly in a C-10-4 cavity**. A cartridge valve may be installed in a C-10-4 cavity only if explicitly indicated in previous versions of the Danfoss Cartridge Valve technical literature.

It should not be assumed that corresponding SDCxx-x and C-xx-x cavities are identical. Although similar, the respective specifications will always differ slightly in dimensions and tolerances.

It is strongly recommended to install a valve in the cavity that is indicated on its the catalog page. Careful verification and testing should be performed whenever installing a cartridge valve in a cavity that is not fully matching the specifications provided on the latest version of the product documentation.

## Housing and Cavities

### Cavity Crossover Table

Danfoss ICS	Thread	Delta Power	HydraForce	Parker	Sterling [Parker]	Command Controls [Bucher]	
<b>CP04-2</b>	7/16-20		NO	NO		NO	
<b>CP04-3</b>			NO	NO		NO	
<b>SDC08-2</b>	3/4-16	YES	YES	YES	YES	YES	
<b>SDC08-3</b>		YES	YES	YES	YES	YES	
<b>CP08-3L</b>							
<b>SDC08-4</b>		YES	YES	YES	YES	YES	
<b>SDC10-2</b>	7/8-14	YES	YES	YES	YES	YES	
<b>SDC10-3</b>		YES	YES	YES	YES	YES	
<b>SDC10-3S</b>				YES	YES	YES	YES
<b>SDC10-4</b>		YES	YES	YES	YES	YES	YES
<b>SDC12-2</b>		NO	YES*	NO		NO	
<b>CP12-2</b>	1 1/16-12	NO	YES*	NO		NO	
<b>CP12-3S</b>		NO	NO	NO		NO	
<b>CP12-3</b>		NO	YES	NO		NO	
<b>CP12-4</b>		NO	NO	NO		NO	
<b>SDC16-2</b>	1 5/16-12		YES	YES	YES	YES	
<b>SDC16-3S</b>				YES	YES	YES	
<b>SDC16-3</b>				YES	YES	YES	
<b>SDC16-4 &amp; CP16-4</b> (Interchangeable)				YES	YES	YES	YES
<b>SDC20-2</b>	1 5/8-12			YES			
<b>SDC20-3</b>							
<b>SDC20-4</b>							

\*Cavities are not 100% compatible, but all Danfoss ICS cartridges will work in HF cavity.

Please note that most manufacturers have many non-standard cavities and that details are subject to change. Compare cavity details before interchanging cartridges.

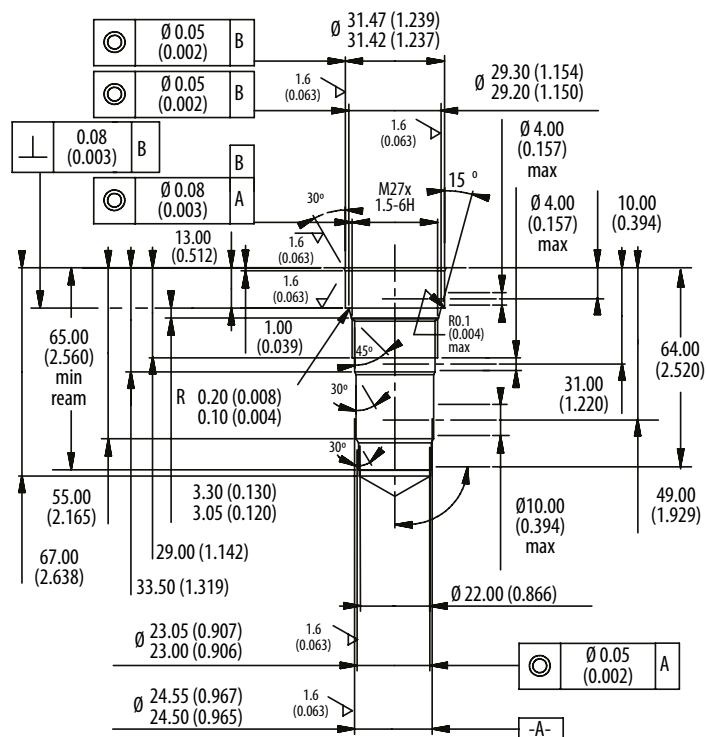


# Housings and Cavities

## A12196

### DIMENSIONS

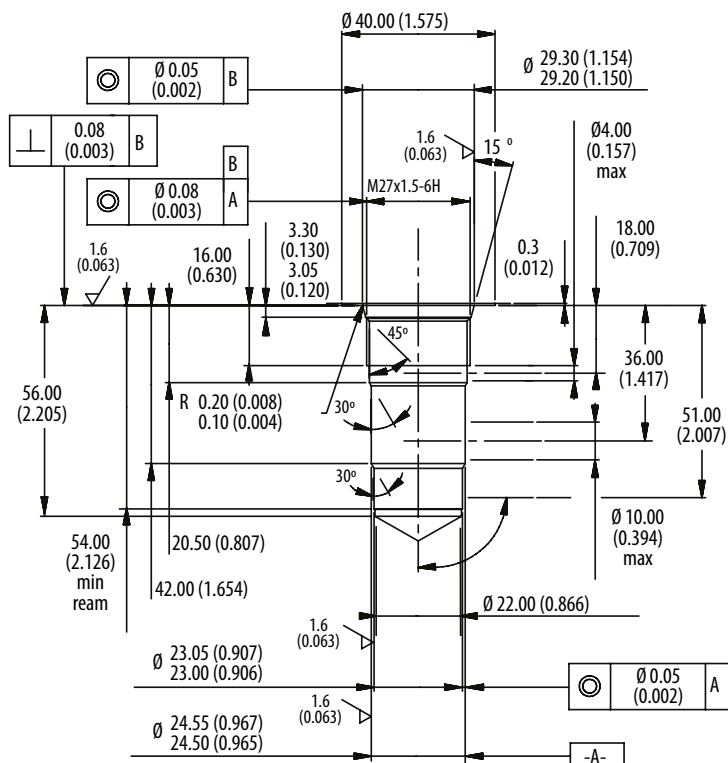
mm [in]



## A12336

### DIMENSIONS

mm [in]

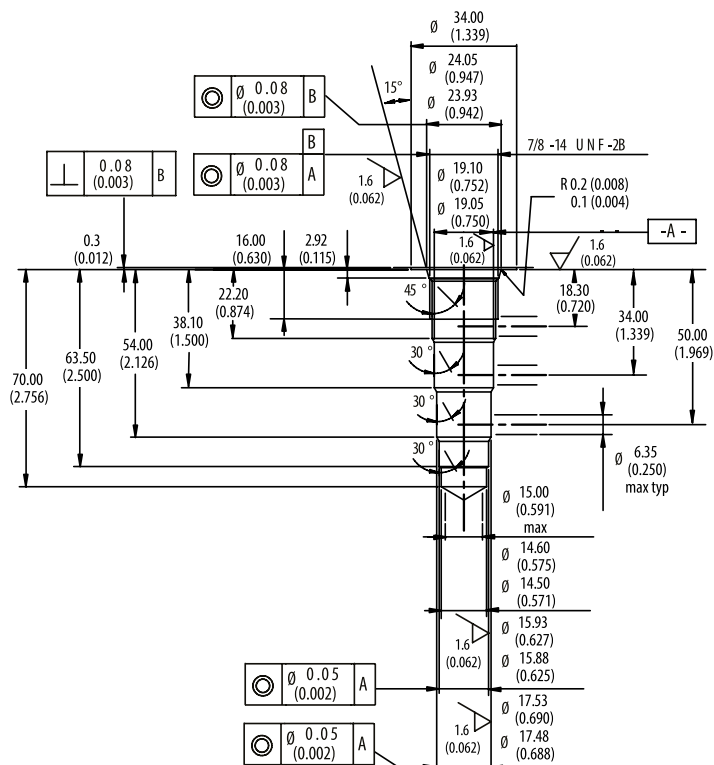


# Housings and Cavities

## A12744

### DIMENSIONS

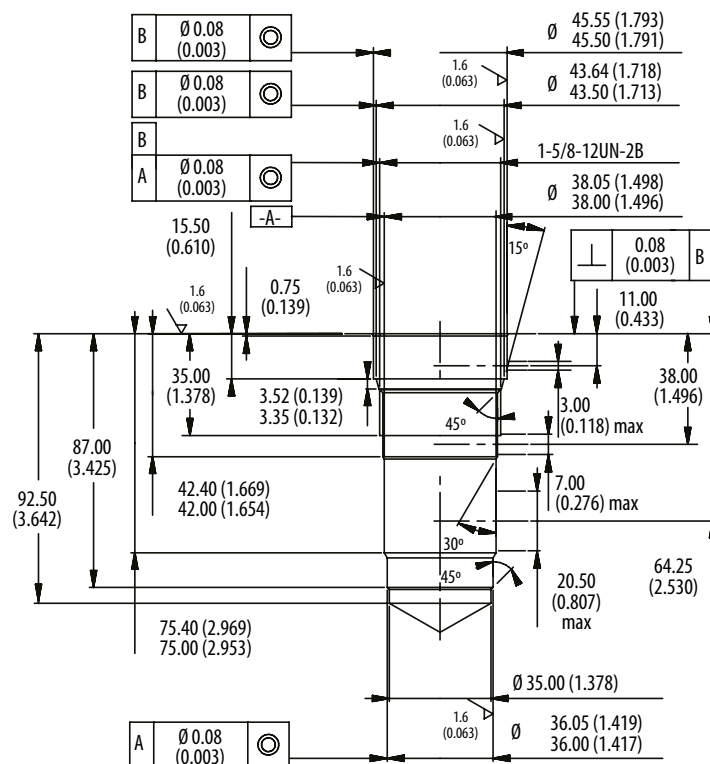
mm [in]



## A13098

### DIMENSIONS

mm [in]



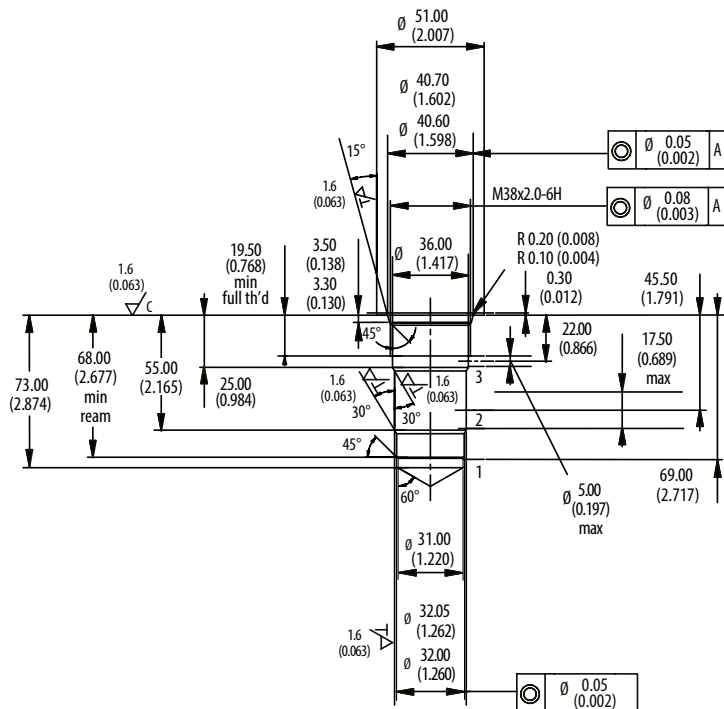


# Housings and Cavities

## A20081

### ■ DIMENSIONS

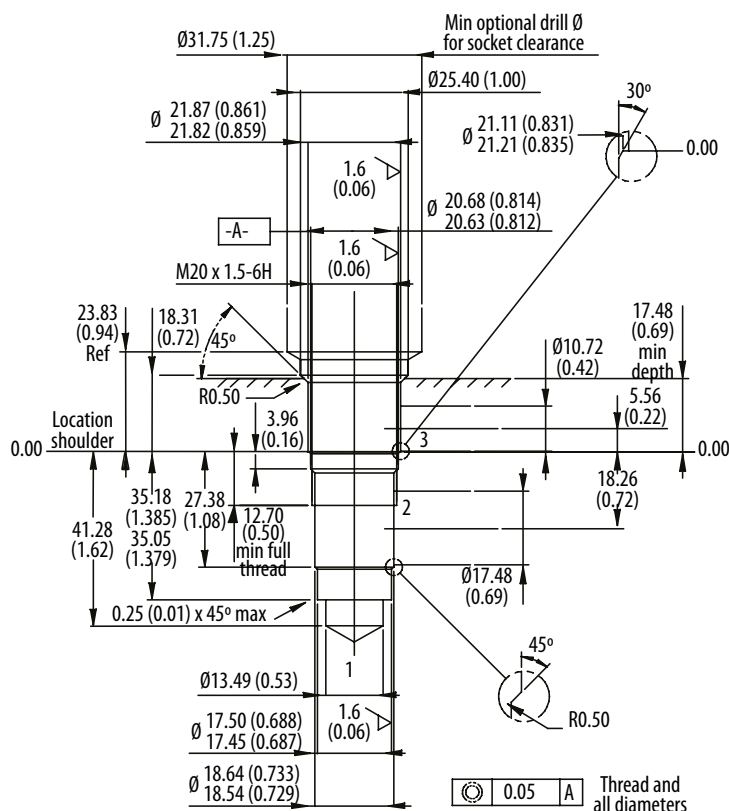
mm [in]



## A20090-T11A

### ■ DIMENSIONS

mm [in]

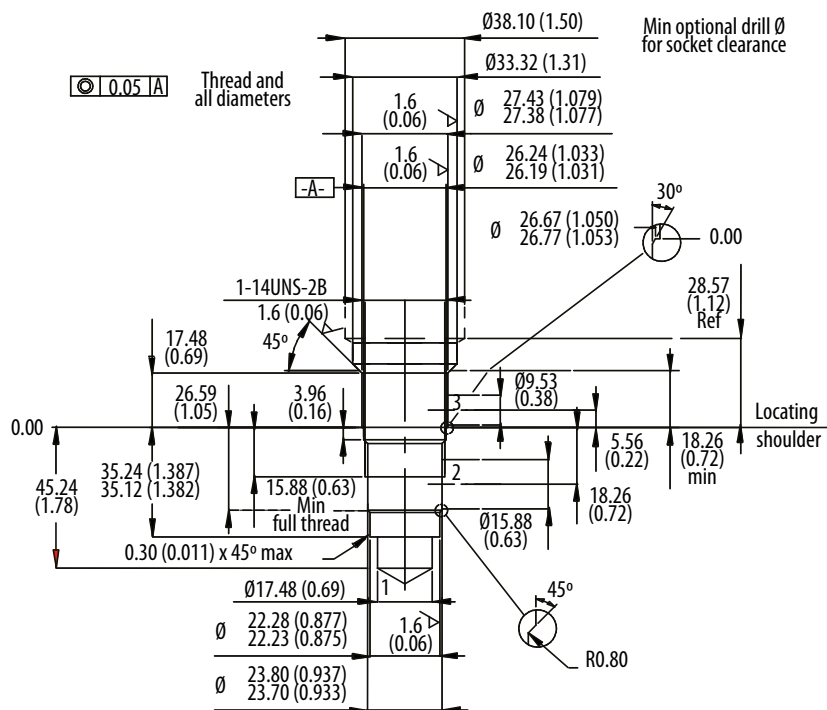


# Housings and Cavities

## A20092-T2A

### DIMENSIONS

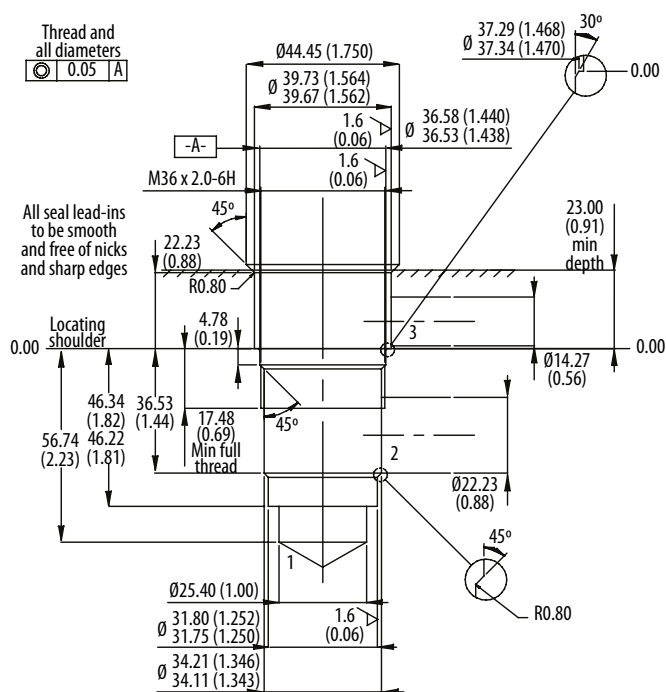
mm [in]



## A20094-T17A

### DIMENSIONS

mm [in]



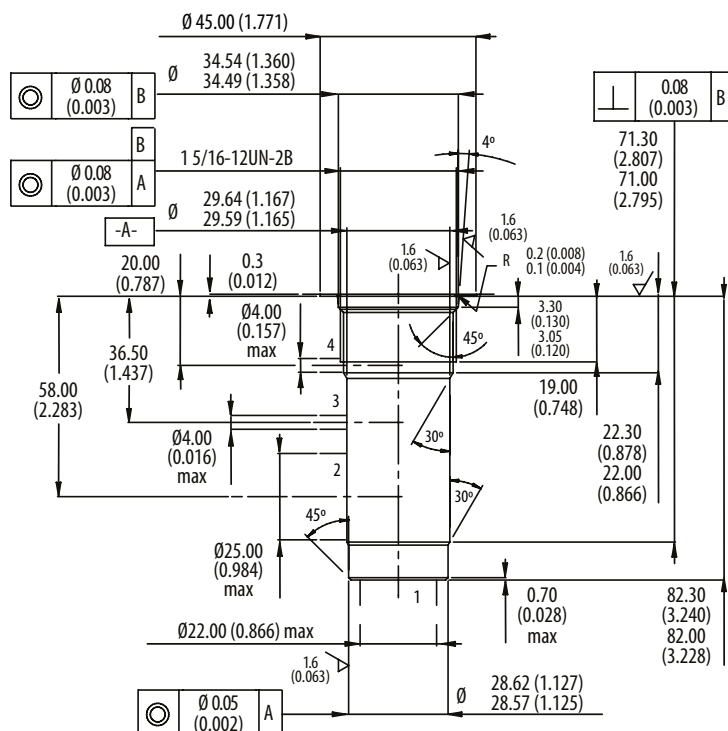


# Housings and Cavities

## A3145

### DIMENSIONS

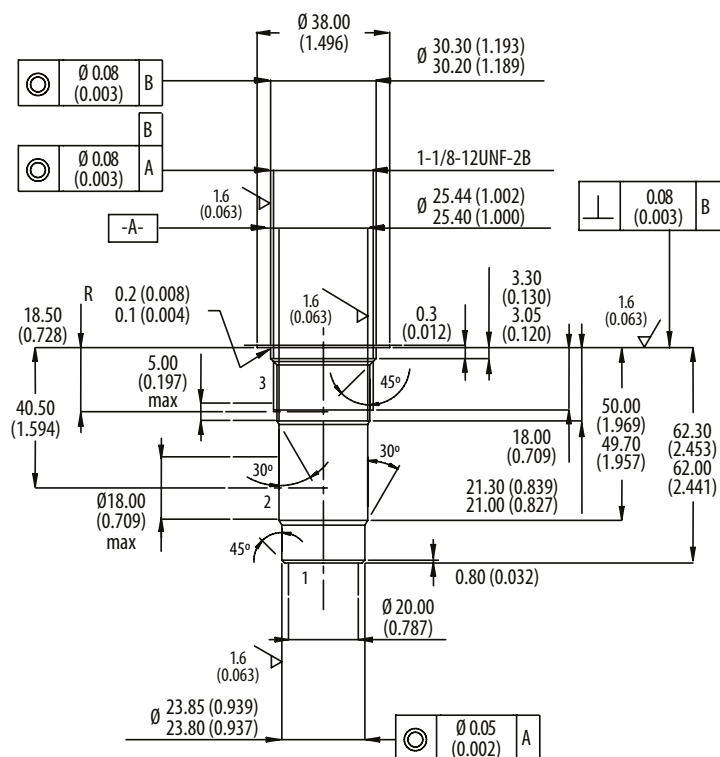
mm [in]



## A3146

### DIMENSIONS

mm [in]



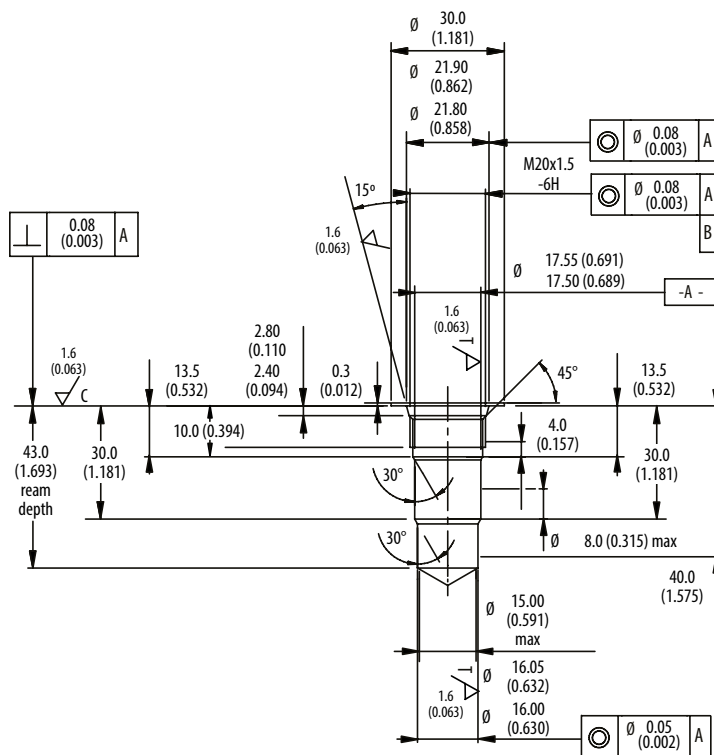


# Housings and Cavities

## A6610

### ■ DIMENSIONS

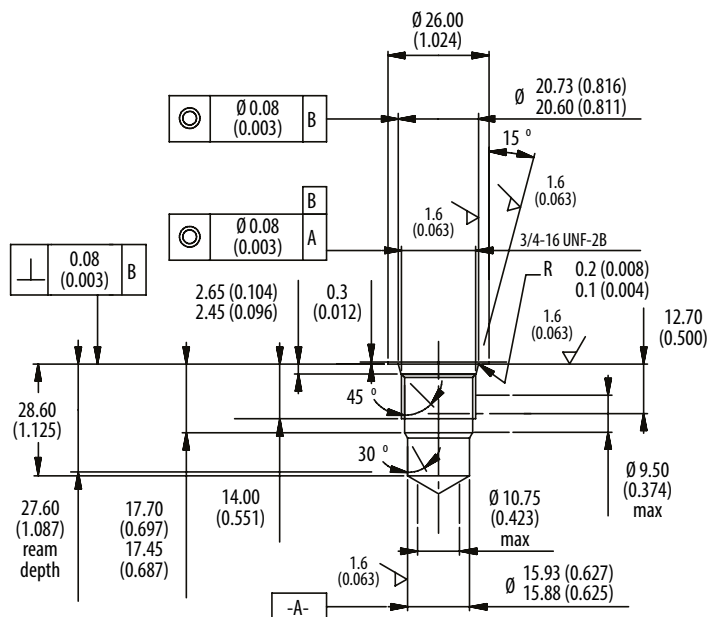
mm [in]



## A6701

### ■ DIMENSIONS

mm [in]

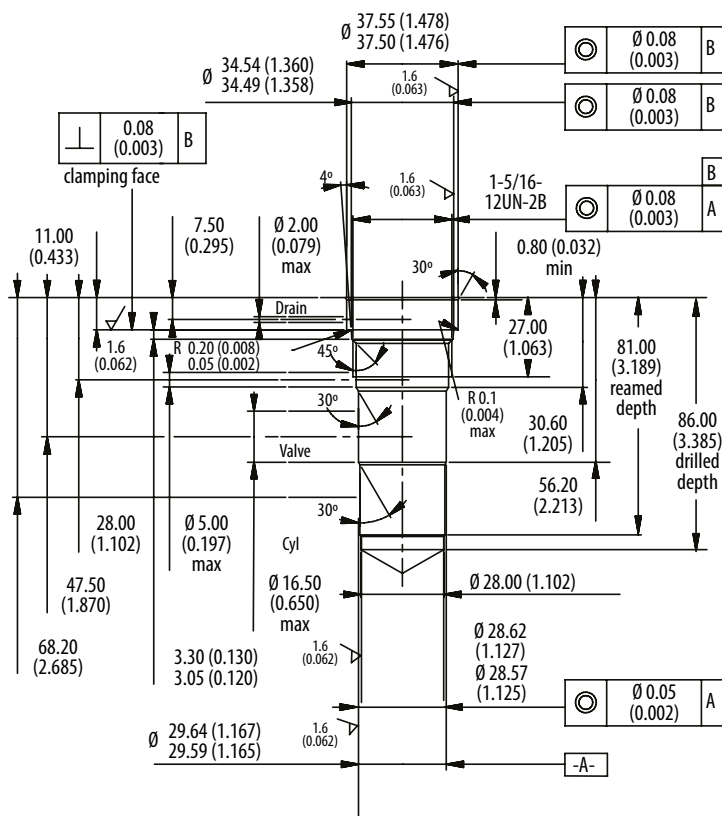


# Housings and Cavities

## A6726

### DIMENSIONS

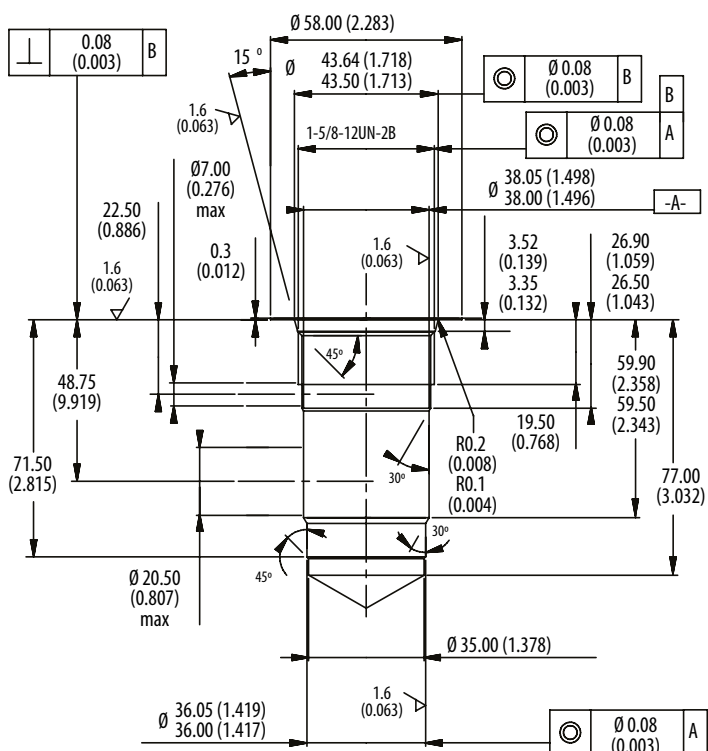
mm [in]



## A6935

### DIMENSIONS

mm [in]

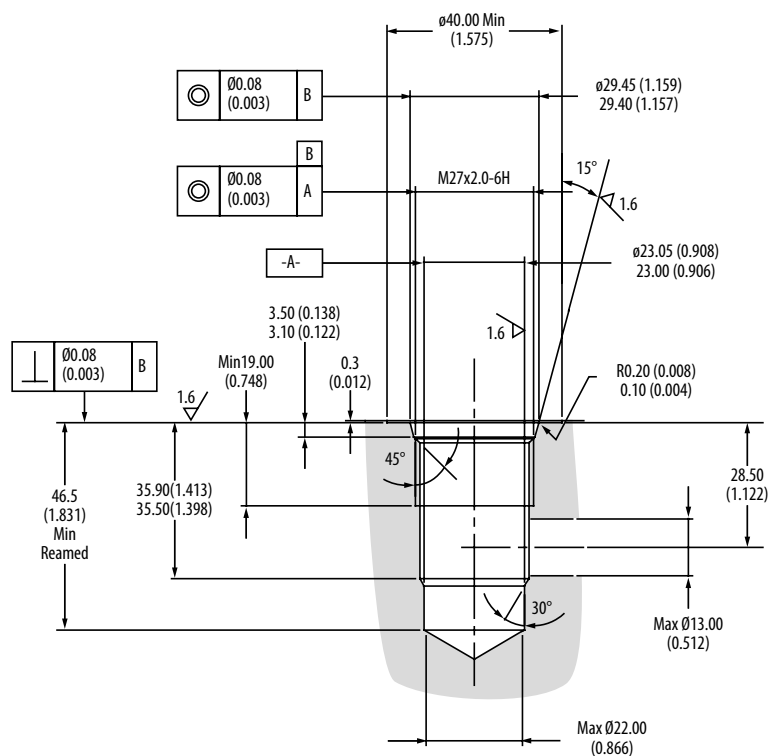


# Housings and Cavities

## A7447

### DIMENSIONS

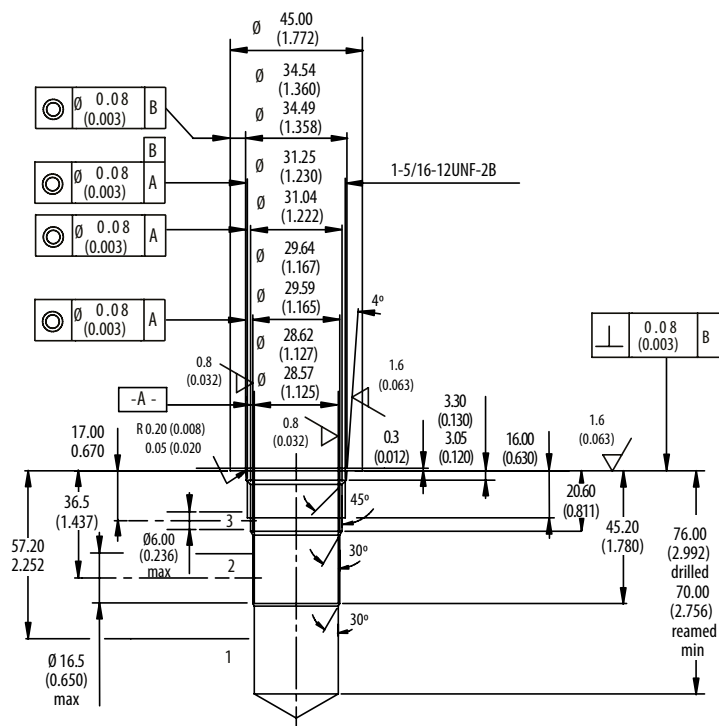
mm [in]



## A877

### DIMENSIONS

mm [in]



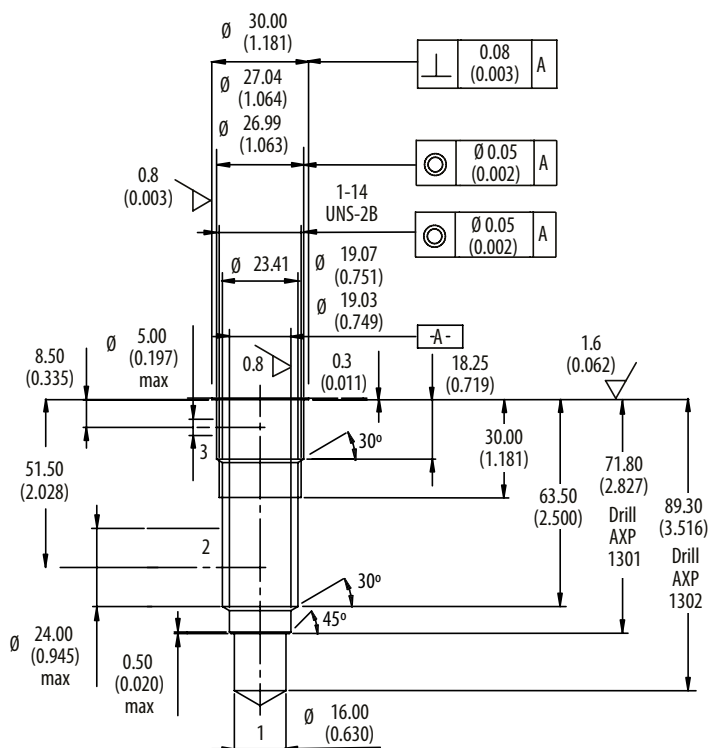


# Housings and Cavities

## A880

### ■ DIMENSIONS

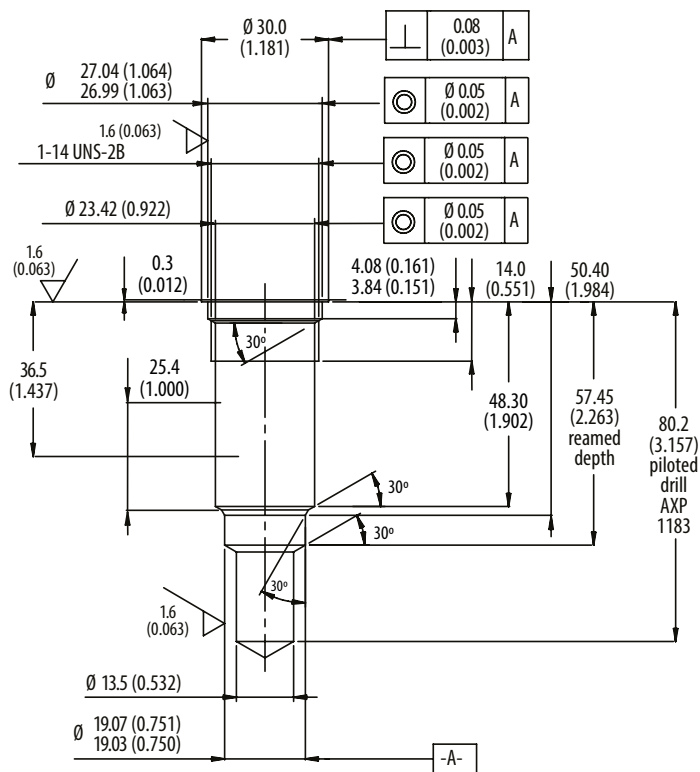
mm [in]



## A881

### ■ DIMENSIONS

mm [in]



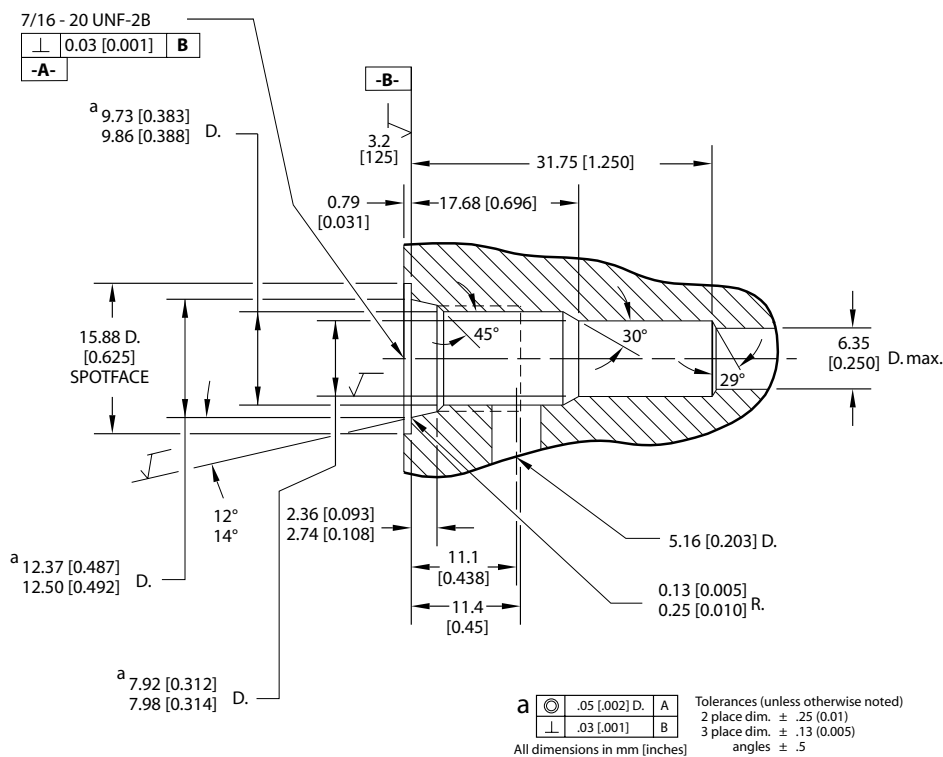


# Housings and Cavities

## CP04-2

### DIMENSIONS

mm [in]

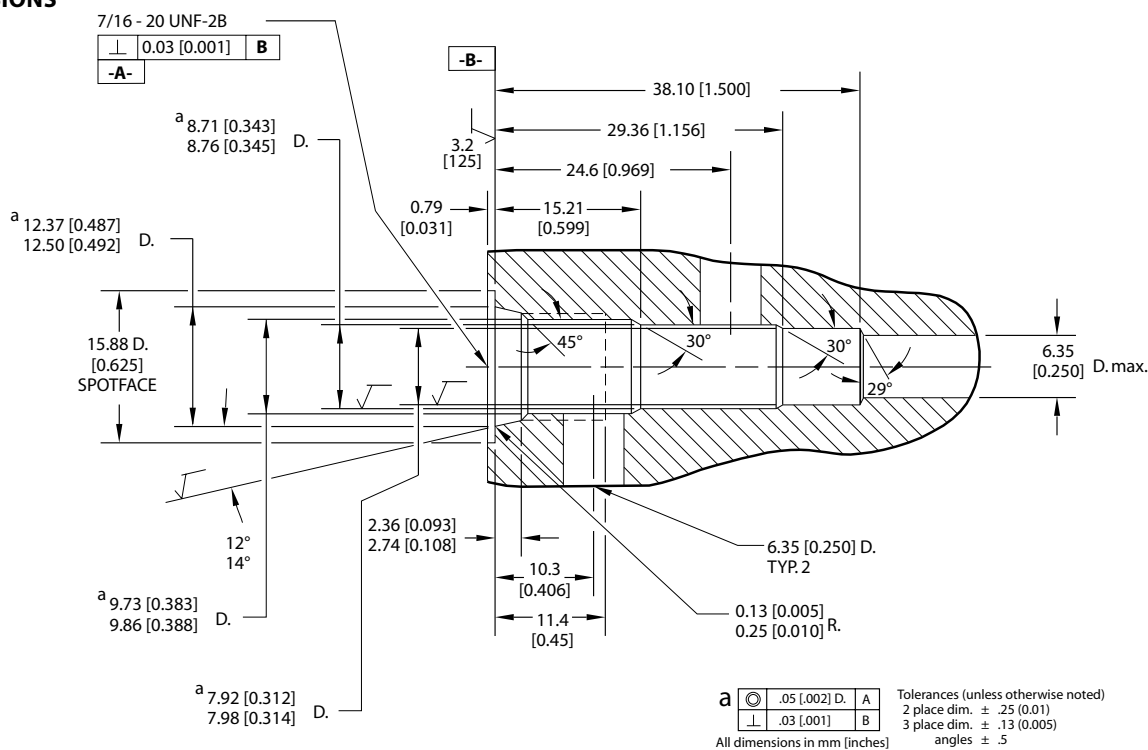


$$\sqrt{\quad} = 1.6 [63]$$

## CP04-3

### DIMENSIONS

mm [in]



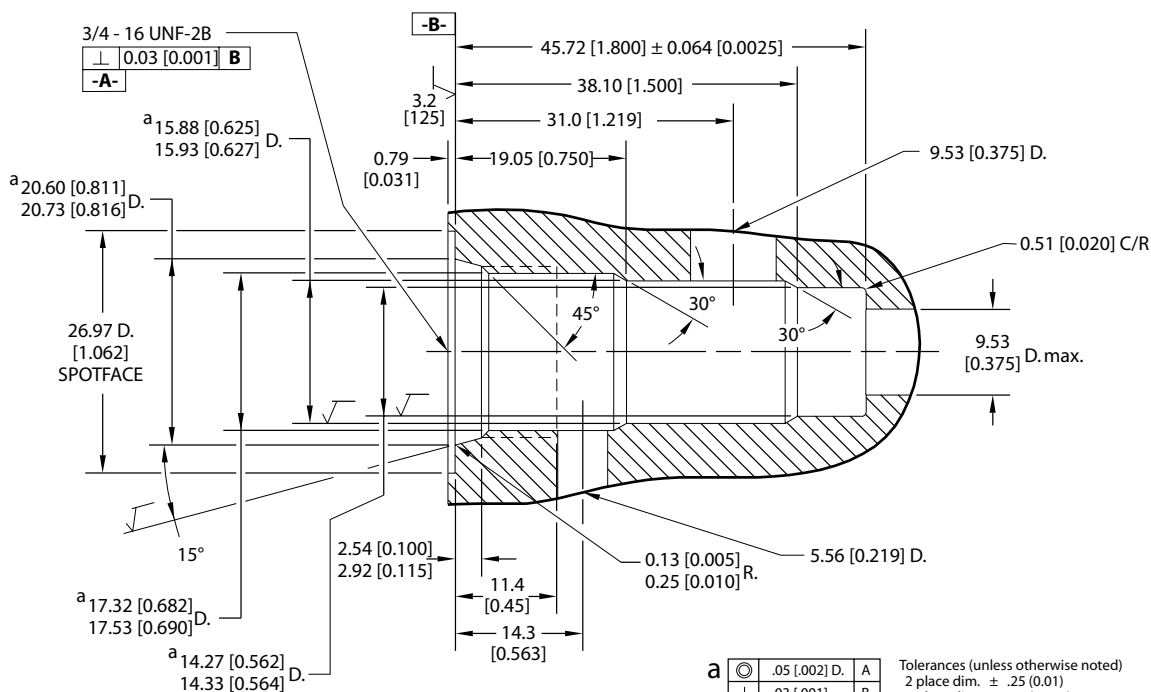
$$\sqrt{\quad} = 1.6 [63]$$

# Housings and Cavities

## CP08-3L

### DIMENSIONS

mm [in]

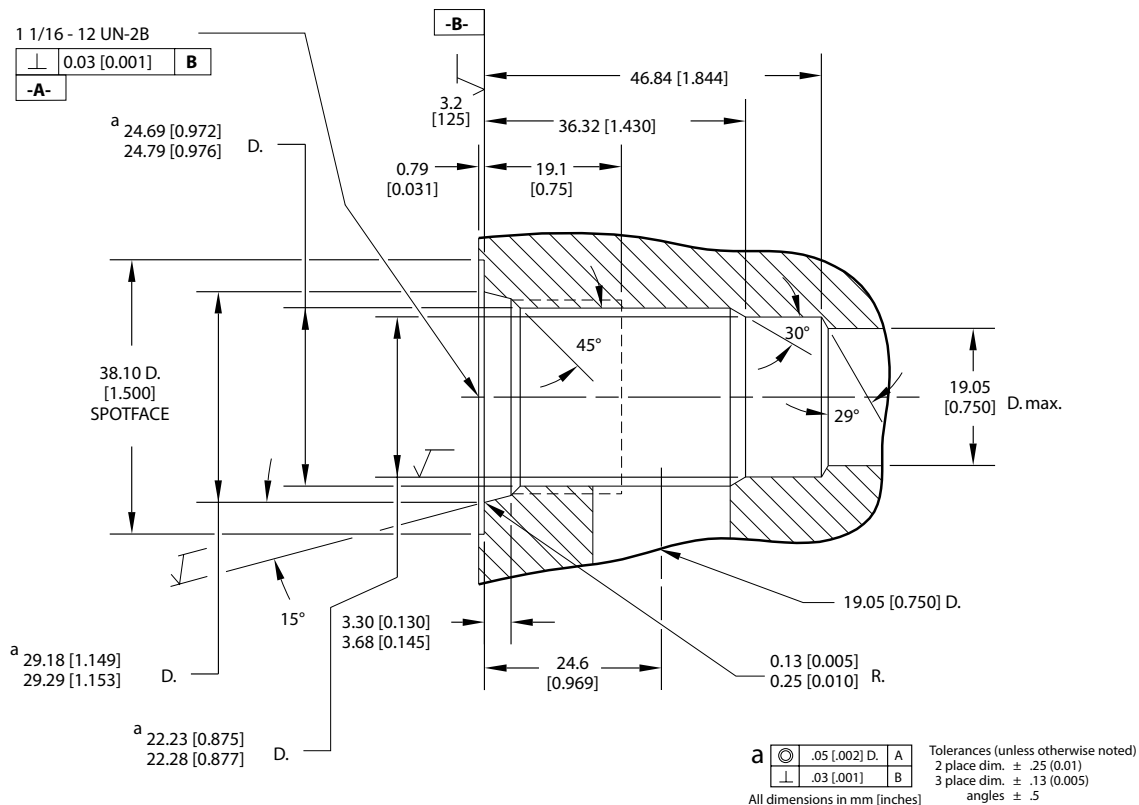


$$\sqrt{\quad} = 1.6 [63]$$

## CP12-2

### DIMENSIONS

mm [in]



#### Caution!

SDC12-2 and CP12-2 are not interchangeable.  
 Differences in sealing area depth may lead to leakage  
 if the wrong valve is used with this cavity. Use only the specified cavity for each valve.

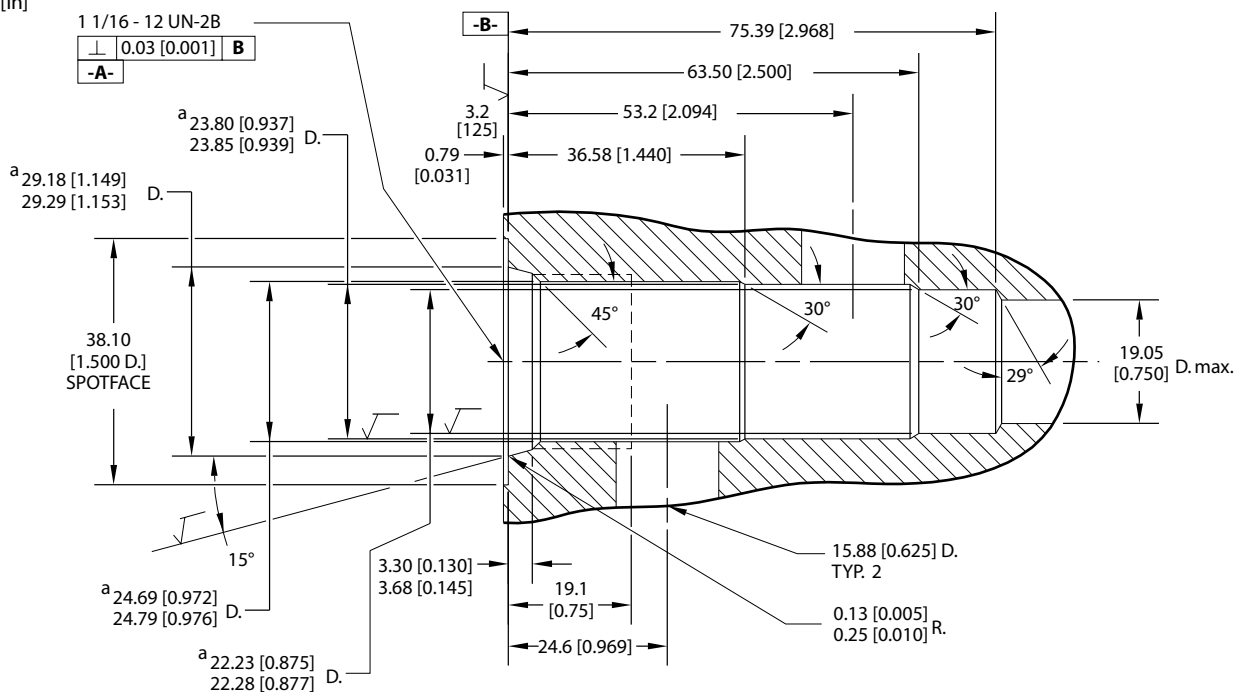
$$\sqrt{\quad} = 1.6 [63]$$

# Housings and Cavities

## CP12-3

### DIMENSIONS

mm [in]



#### Caution!

SDC12-3 and CP12-3 are not interchangeable. A cartridge designed to fit the SDC12-3 cavity will fit in the CP12-3 cavity but there is risk of the top backup ring between port 1 and port 2 not being covered in the cavity. If the cartridge has pressure at port 1 the risk of the back up ring extruding exists.

$\text{a}$	$\text{C}$	.05 [0.002] D.	A
	$\perp$	.03 [0.001]	B

All dimensions in mm [inches]

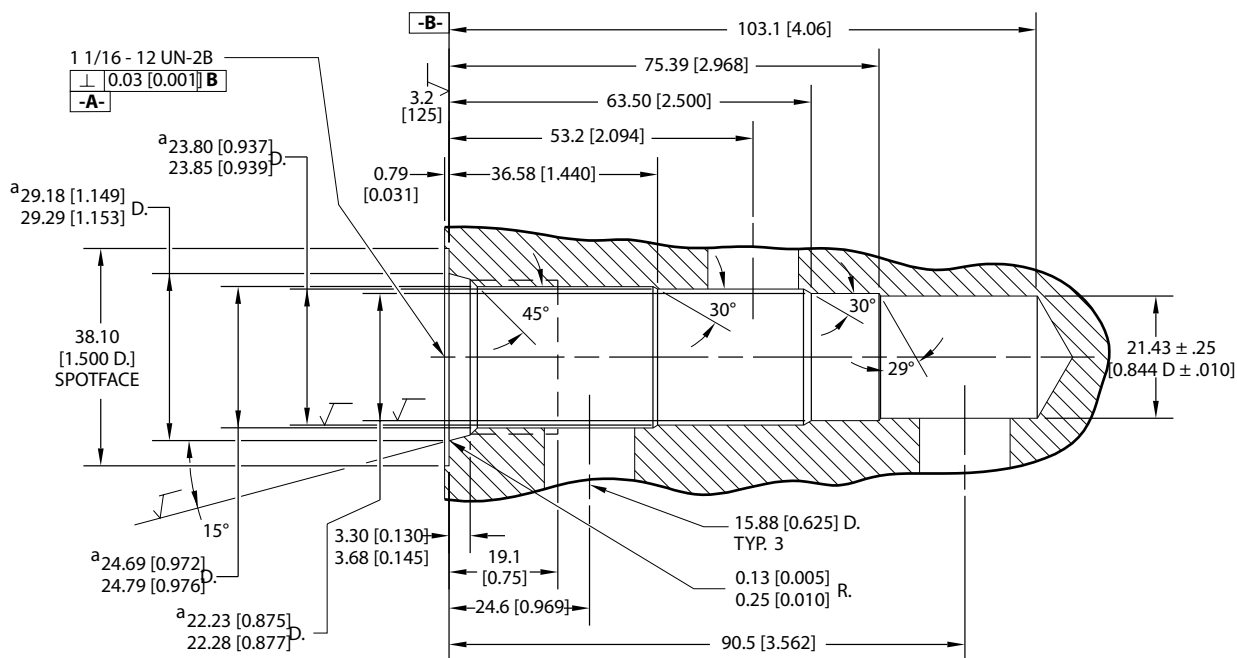
Tolerances (unless otherwise noted)  
 2 place dim.  $\pm$  .25 (0.01)  
 3 place dim.  $\pm$  .13 (0.005)  
 angles  $\pm$  .5

$$\sqrt{\quad} = 1.6 [63]$$

## CP12-3M

### DIMENSIONS

mm [in]



$$\sqrt{\quad} = 1.6 [63]$$

$^a$	$\text{C}$	.05 [0.002] D.	A
	$\perp$	.03 [0.001]	B

All dimensions in mm [inches]

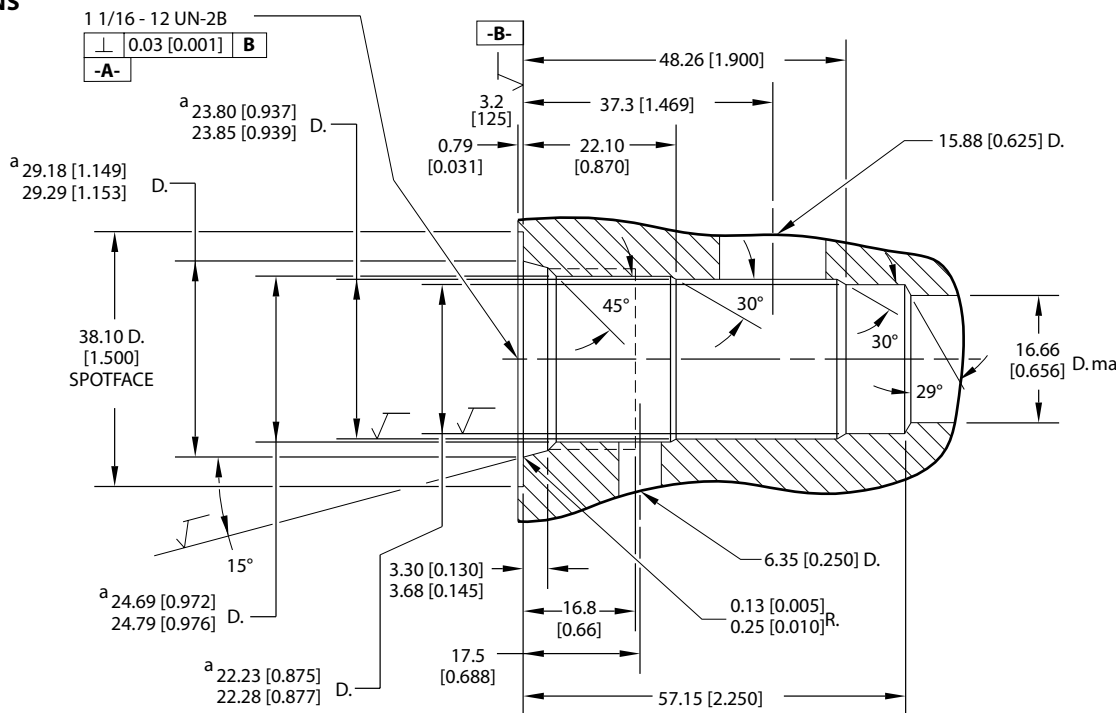
Tolerances (unless otherwise noted)  
 2 place dim.  $\pm$  .25 (0.01)  
 3 place dim.  $\pm$  .13 (0.005)  
 angles  $\pm$  .5

# Housings and Cavities

## CP12-3S

### DIMENSIONS

mm [in]



$$\sqrt{\quad} = 1.6 [63]$$

a	⊙	.05 [0.002] D.	A
	⊥	.03 [0.001]	B

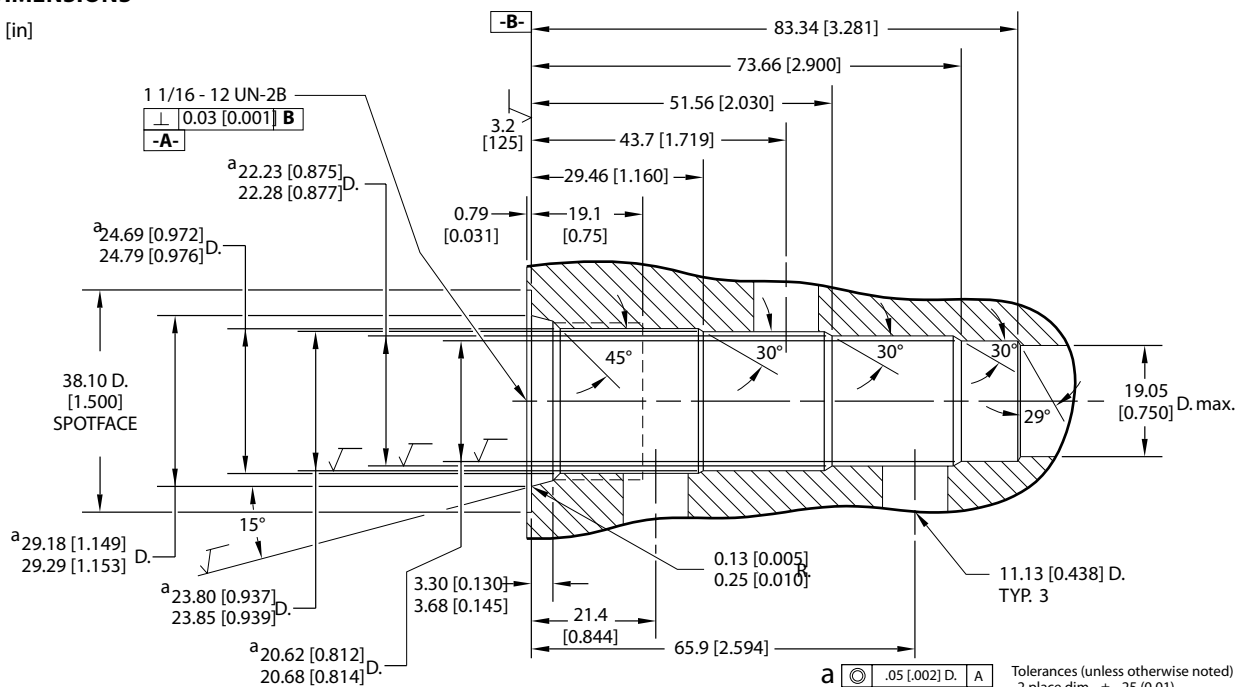
All dimensions in mm [inches]

Tolerances (unless otherwise noted)  
 2 place dim. ± .25 (0.01)  
 3 place dim. ± .13 (0.005)  
 angles ± .5

## CP12-4

### DIMENSIONS

mm [in]



$$\sqrt{\quad} = 1.6 [63]$$

a	⊙	.05 [0.002] D.	A
	⊥	.03 [0.001]	B

All dimensions in mm [inches]

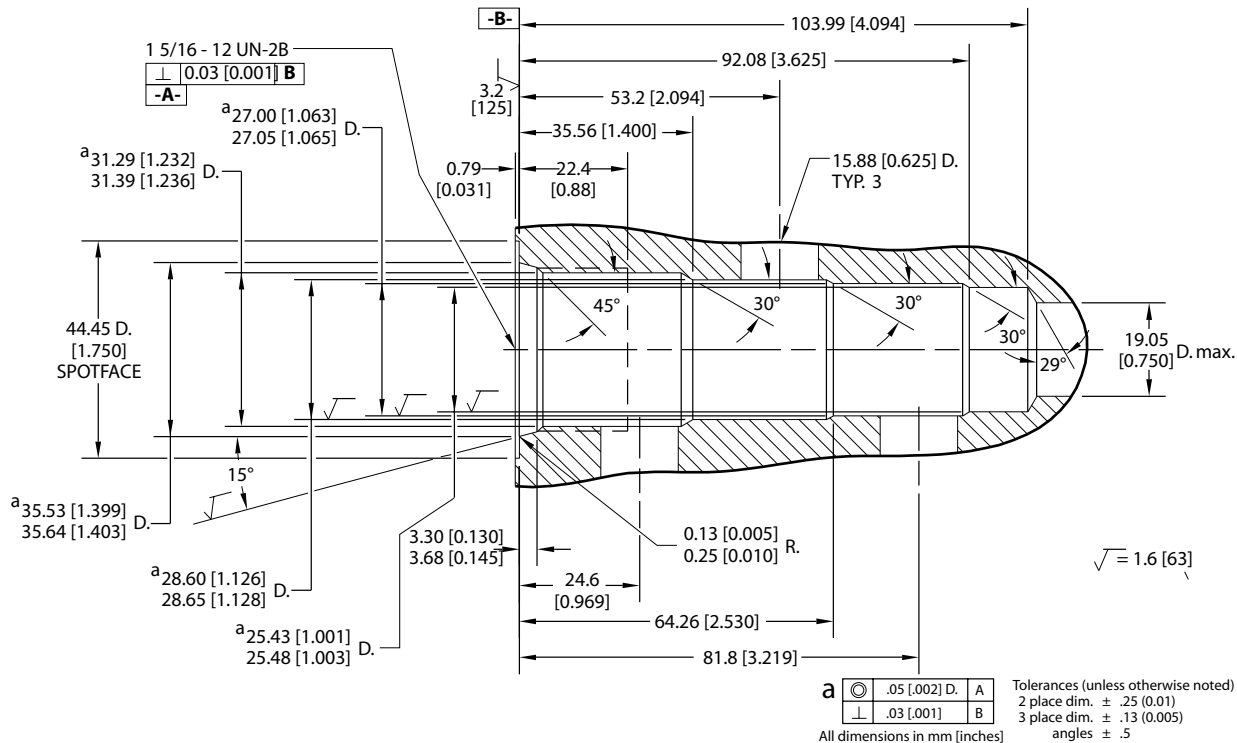
Tolerances (unless otherwise noted)  
 2 place dim. ± .25 (0.01)  
 3 place dim. ± .13 (0.005)  
 angles ± .5

# Housings and Cavities

## CP16-4 (interchangeable with SDC16-4)

### ■ DIMENSIONS

mm [in]

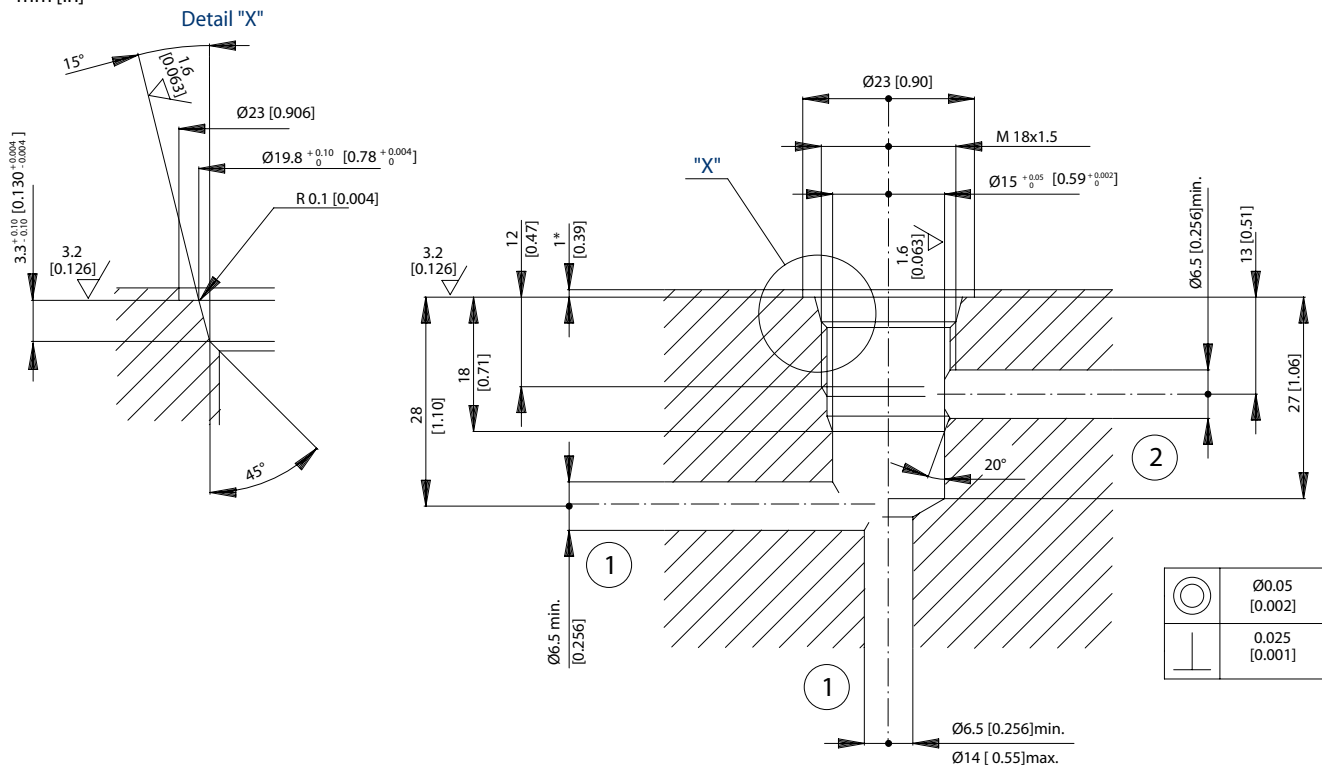


# Housings and Cavities

## NCS04/2

### DIMENSIONS

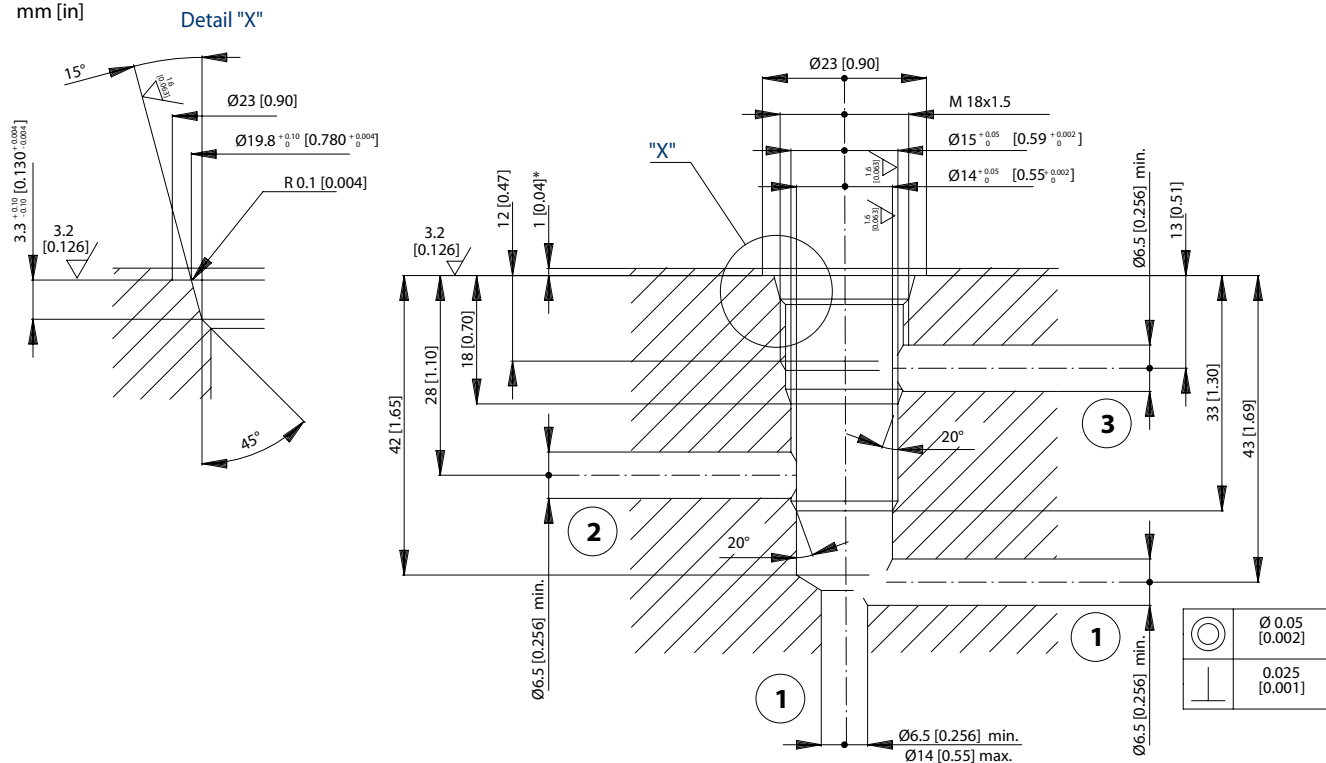
mm [in]



## NCS04/3

### DIMENSIONS

mm [in]



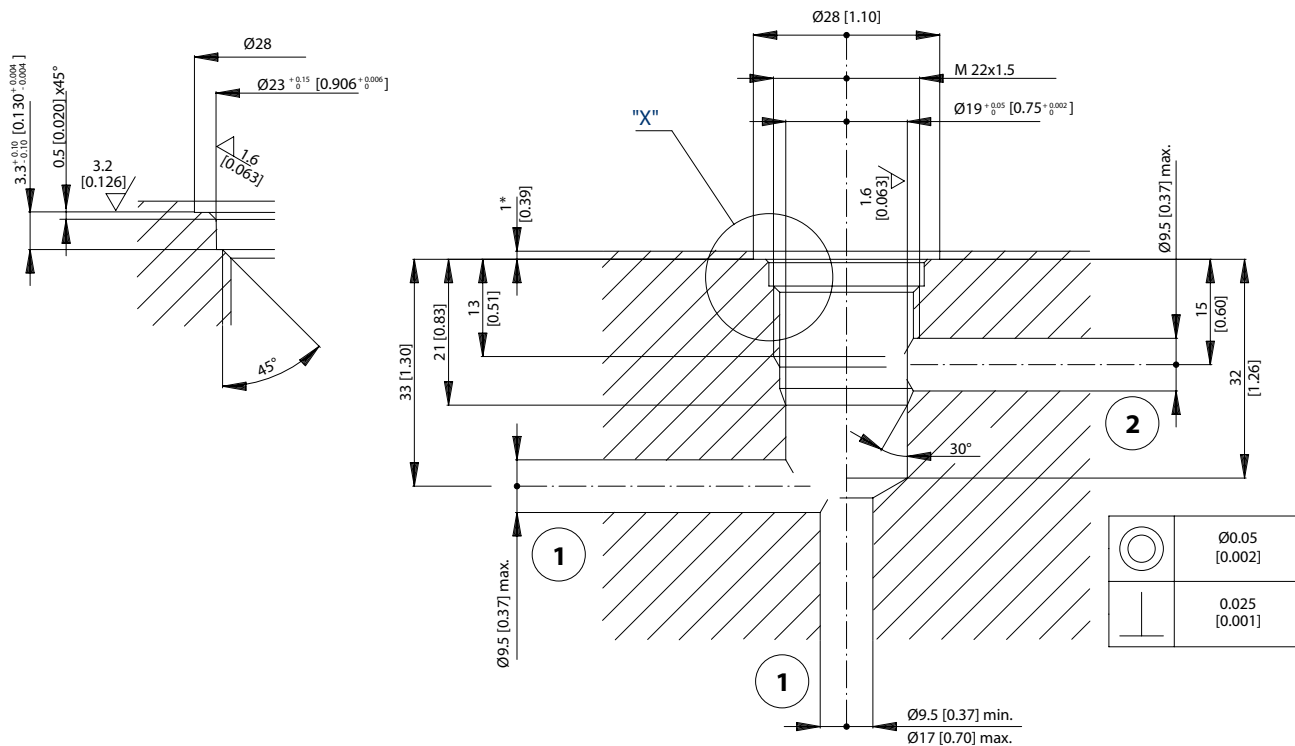
# Housings and Cavities

## NCS06/2

### DIMENSIONS

mm [in]

Detail "X"

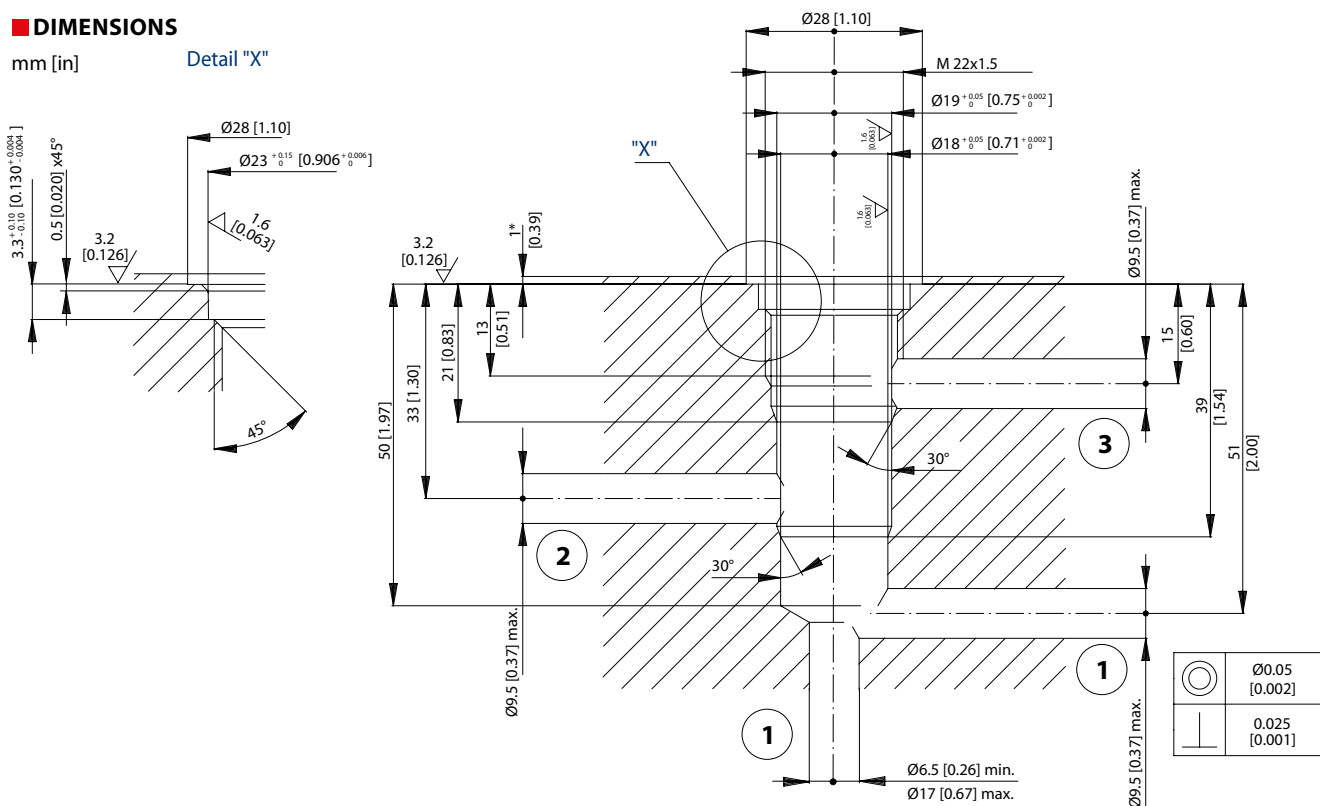


## NCS06/3

### DIMENSIONS

mm [in]

Detail "X"









# Housings and Cavities

## SDC08-2

### DIMENSIONS

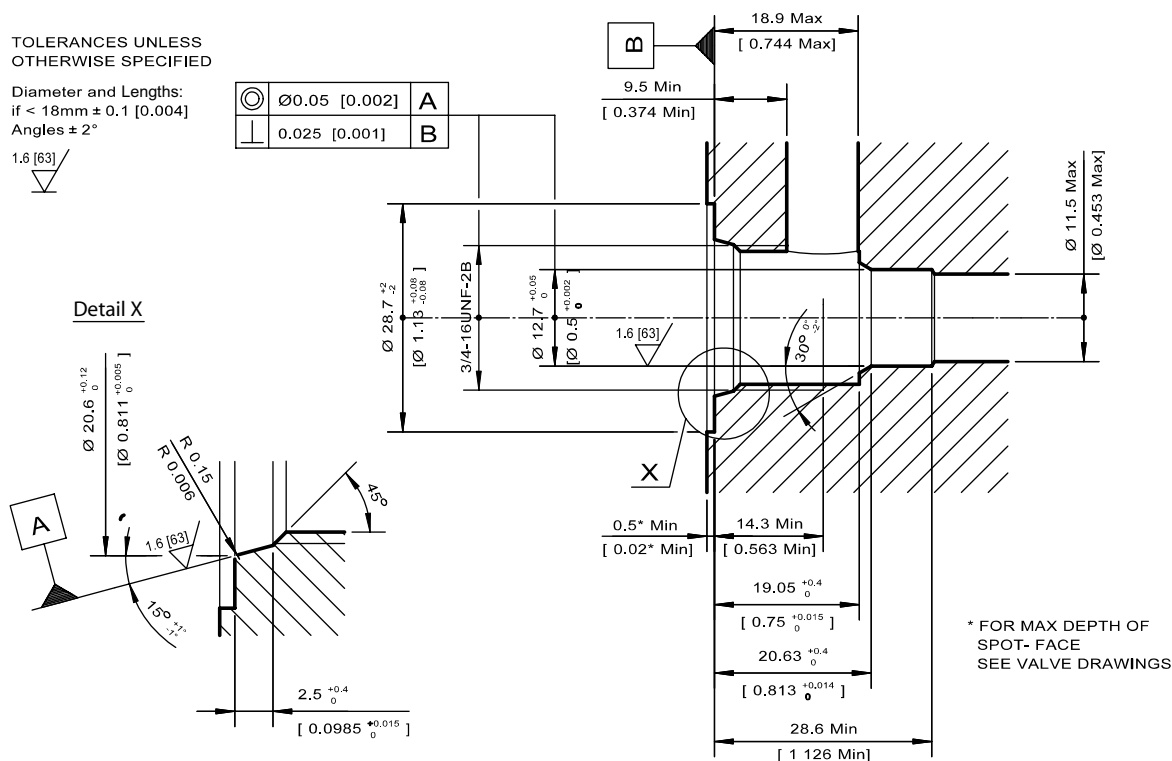
mm [in]

TOLERANCES UNLESS OTHERWISE SPECIFIED

Diameter and Lengths:  
if < 18mm ± 0.1 [0.004]  
Angles ± 2°

1.6 [63]

	Ø0.05 [0.002]	A
	0.025 [0.001]	B



## SDC08-3

### DIMENSIONS

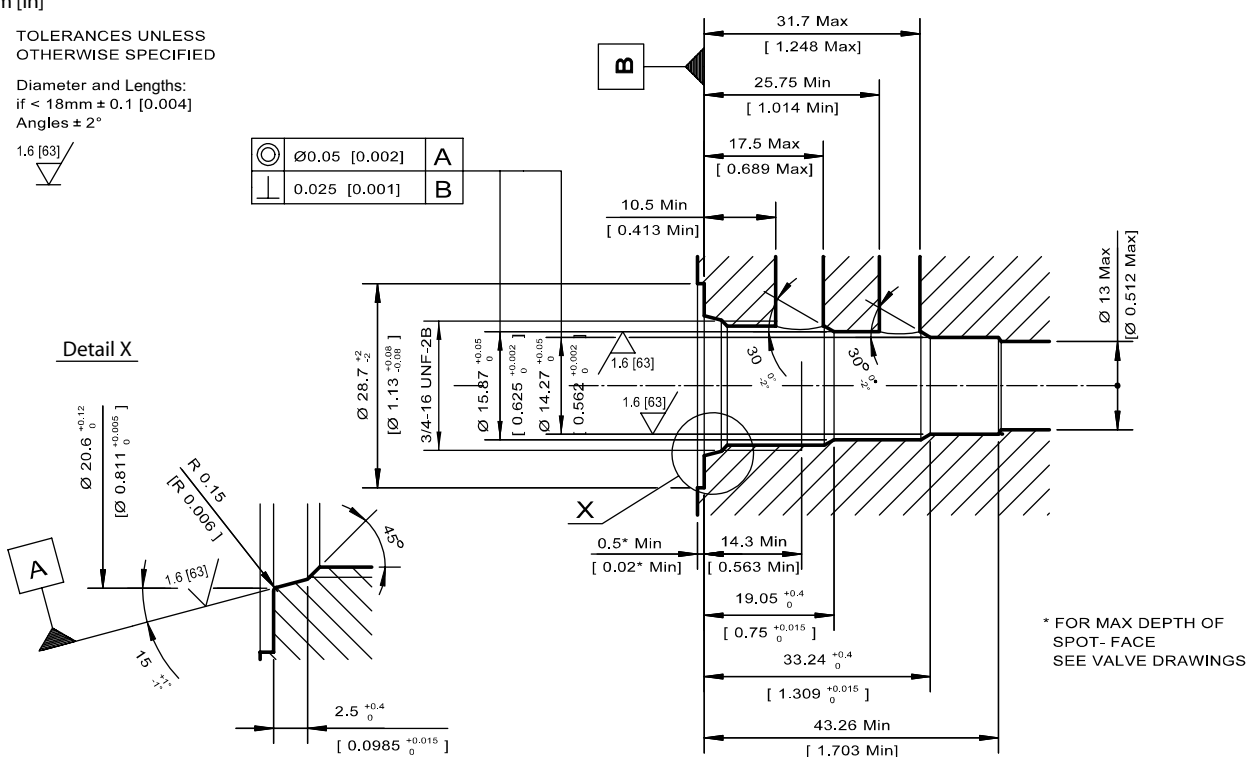
mm [in]

TOLERANCES UNLESS OTHERWISE SPECIFIED

Diameter and Lengths:  
if < 18mm ± 0.1 [0.004]  
Angles ± 2°

1.6 [63]

	Ø0.05 [0.002]	A
	0.025 [0.001]	B



# Housings and Cavities

## SDC08-4

### DIMENSIONS

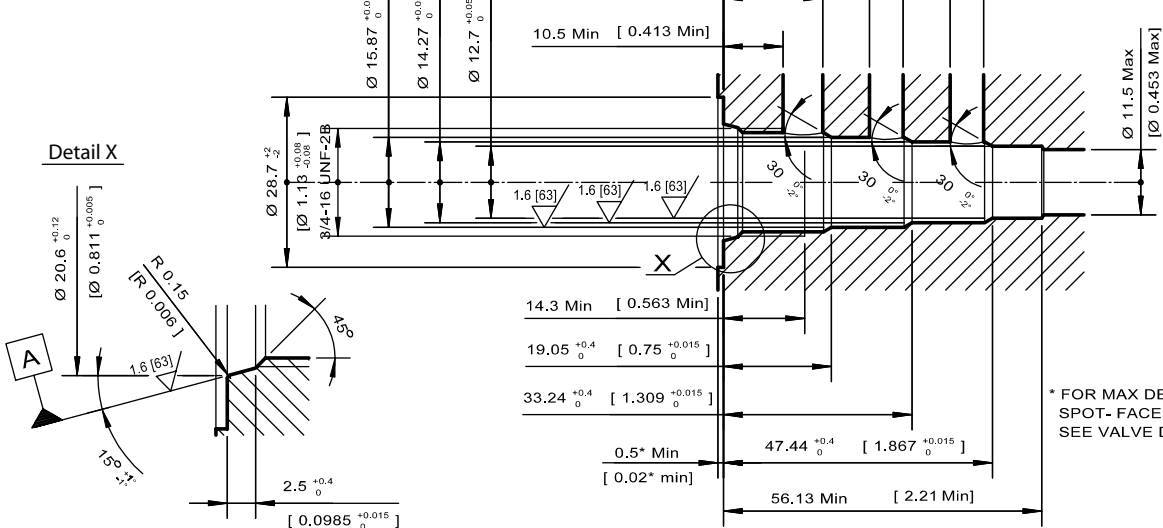
mm [in]

TOLERANCES UNLESS OTHERWISE SPECIFIED

	Ø0.05 [0.002]	A
	0.025 [0.001]	B

Diameter and Lengths:  
if < 18mm ± 0.1 [0.004]  
Angles ± 2°

1.6 [63]



## SDC10-2

### DIMENSIONS

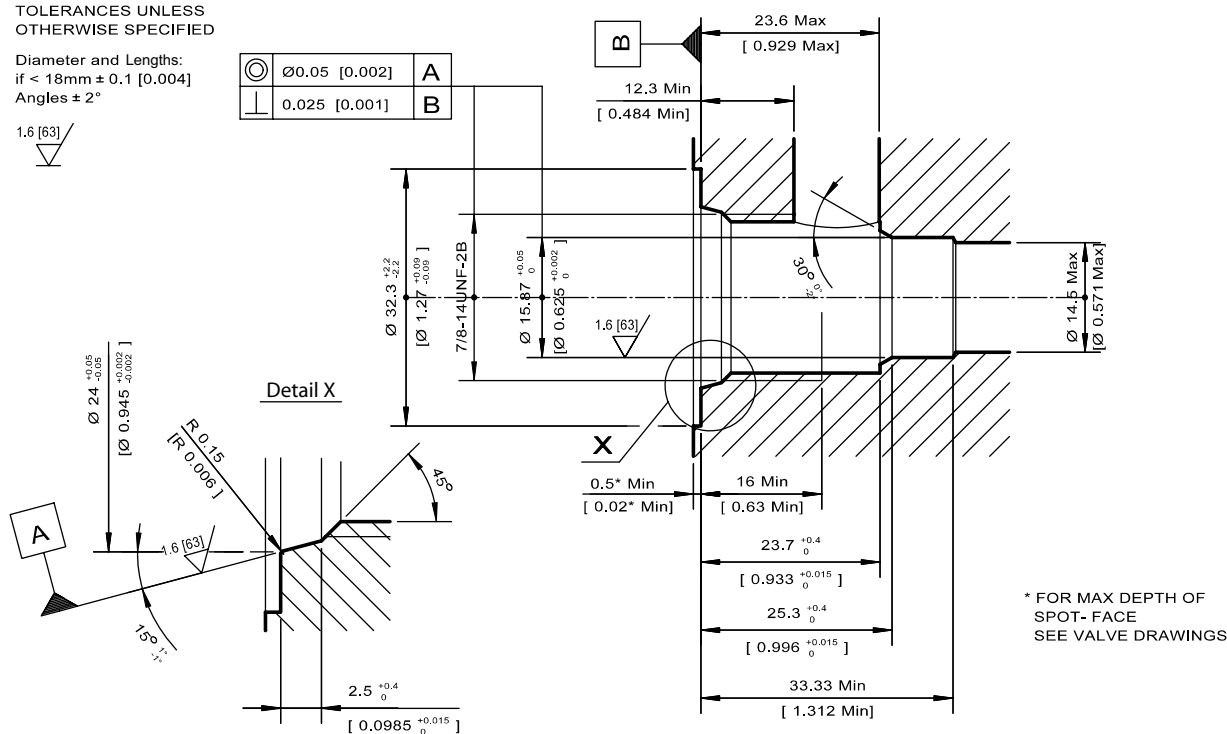
mm [in]

TOLERANCES UNLESS OTHERWISE SPECIFIED

	Ø0.05 [0.002]	A
	0.025 [0.001]	B

Diameter and Lengths:  
if < 18mm ± 0.1 [0.004]  
Angles ± 2°

1.6 [63]



# Housings and Cavities

## SDC10-3

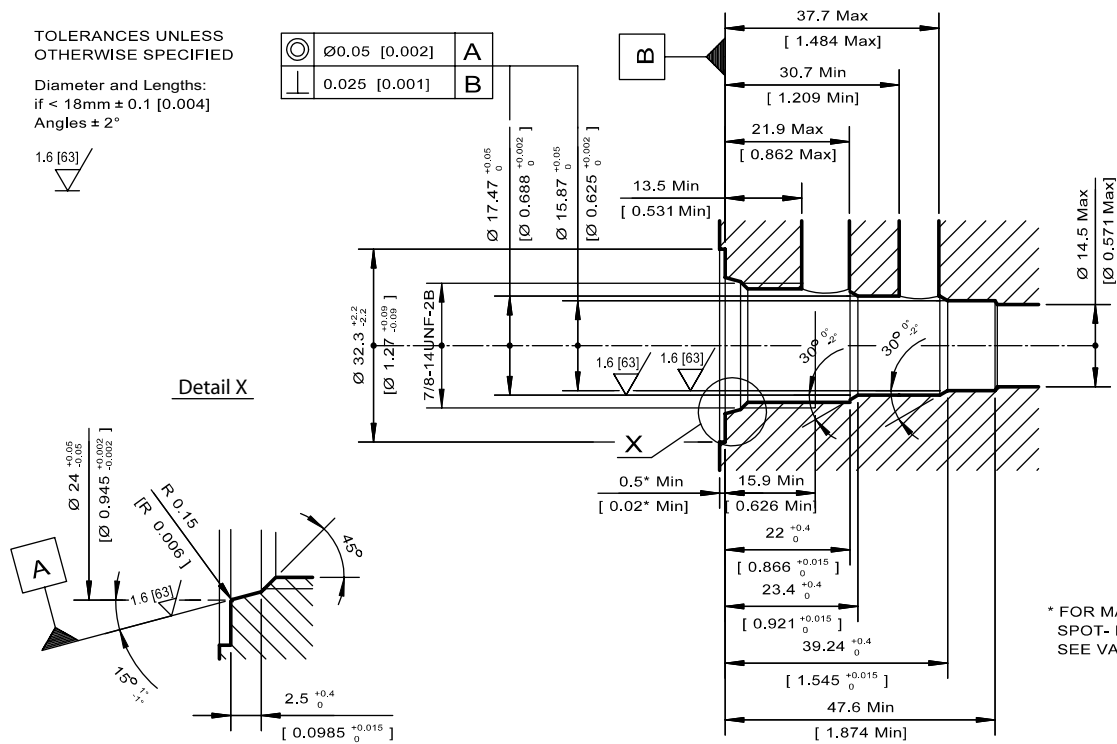
### DIMENSIONS

mm [in]

TOLERANCES UNLESS OTHERWISE SPECIFIED

Diameter and Lengths:  
if < 18mm ± 0.1 [0.004]  
Angles ± 2°

1.6 [63]



## SDC10-3S

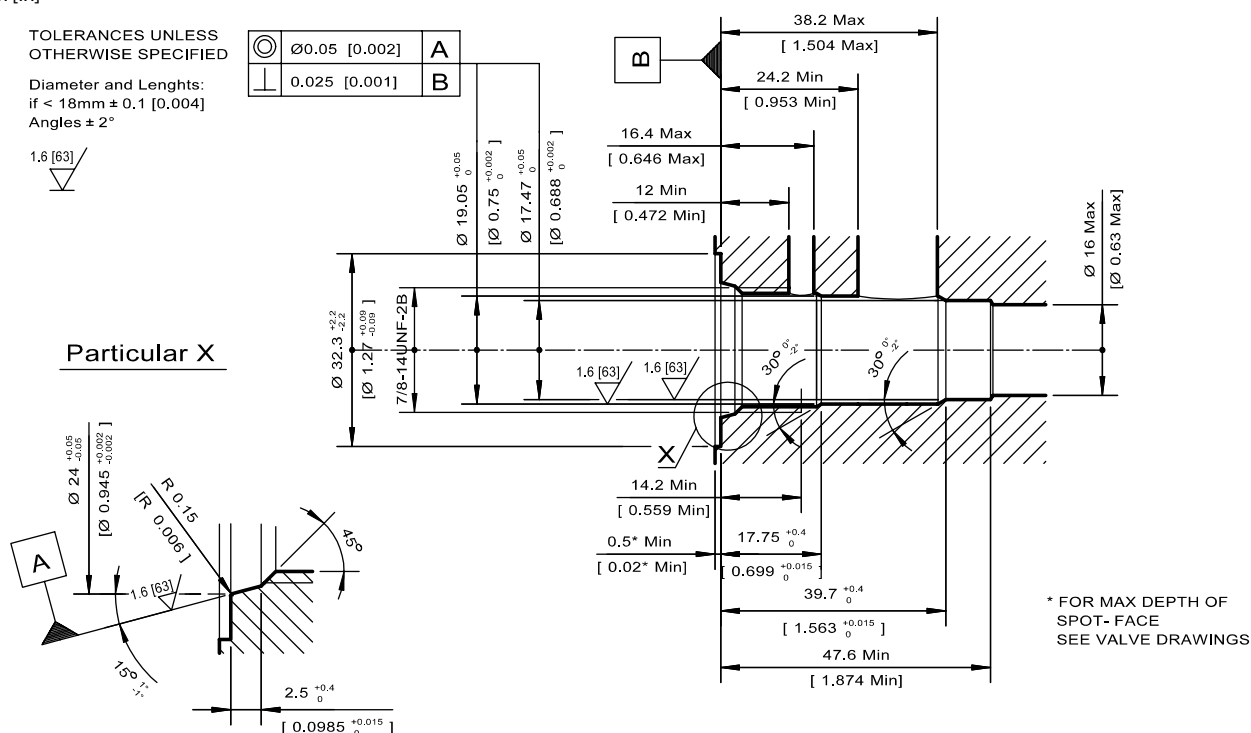
### DIMENSIONS

mm [in]

TOLERANCES UNLESS OTHERWISE SPECIFIED

Diameter and Lengths:  
if < 18mm ± 0.1 [0.004]  
Angles ± 2°

1.6 [63]

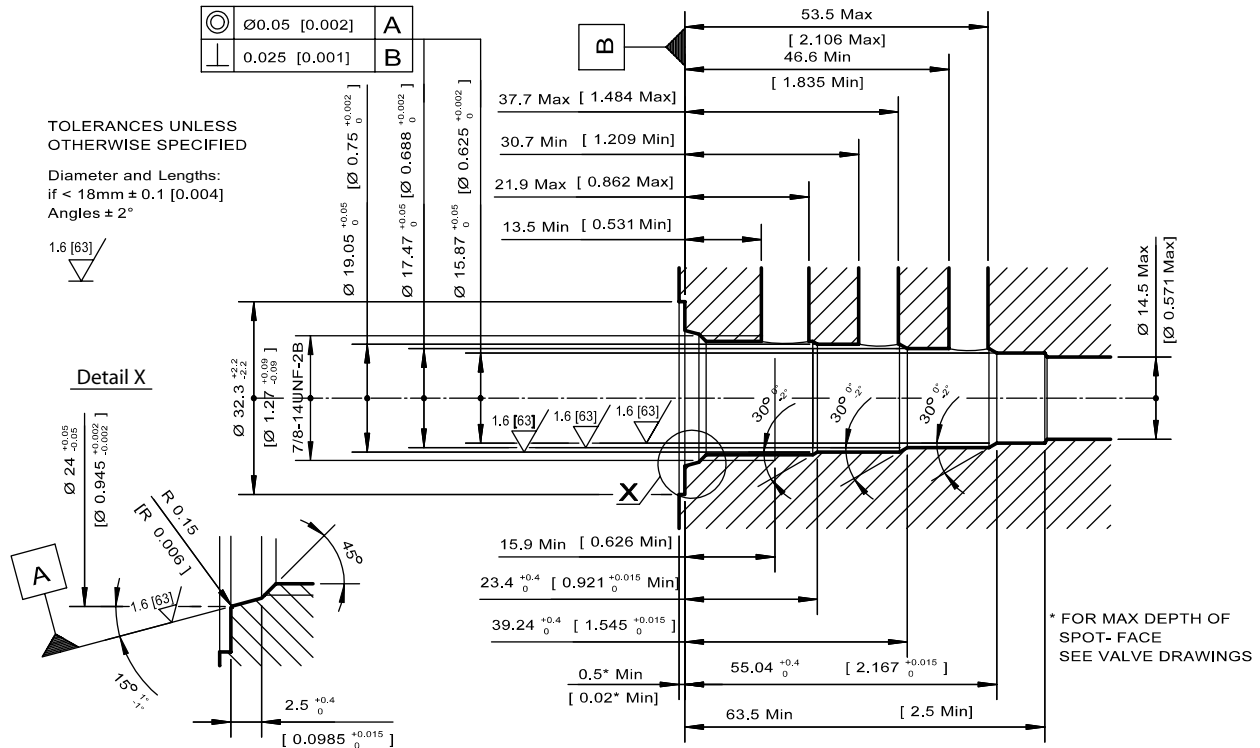


# Housings and Cavities

## SDC10-4

### DIMENSIONS

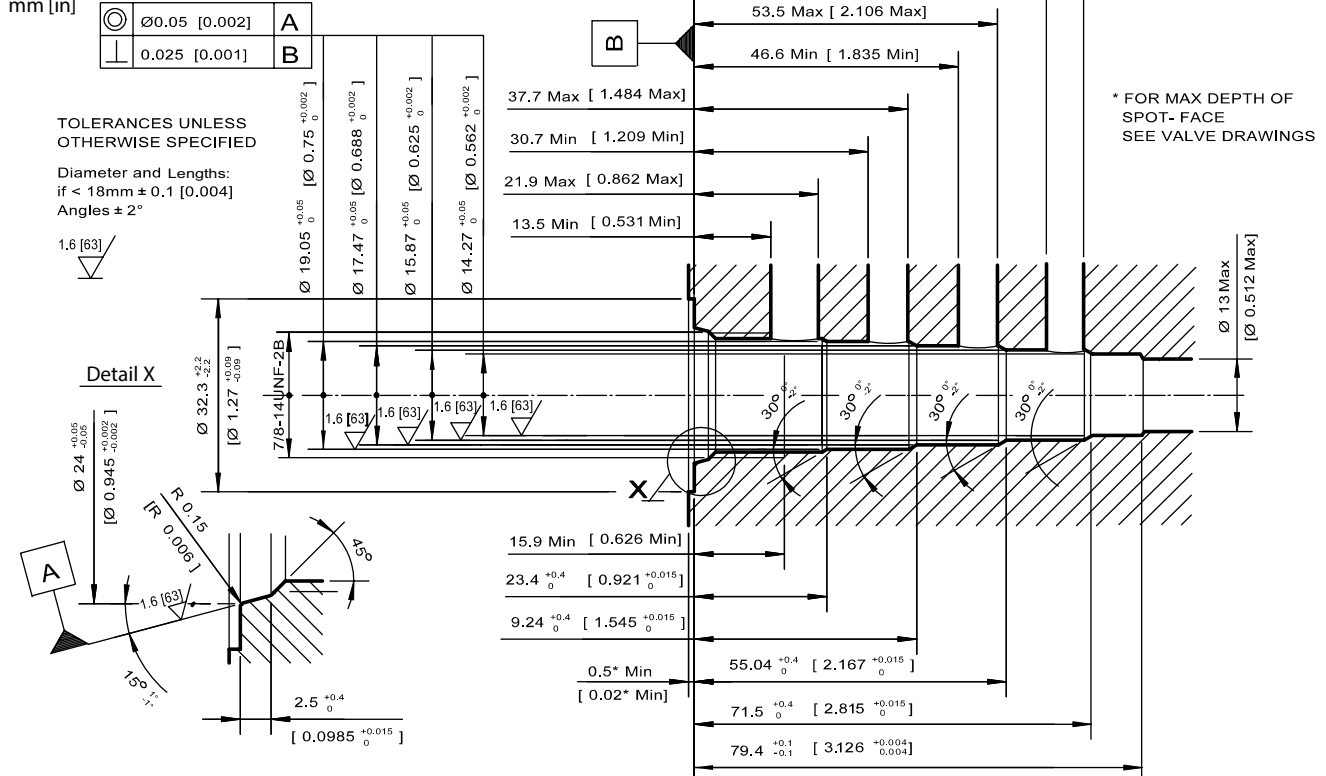
mm [in]



## SDC10-5

### DIMENSIONS

mm [in]

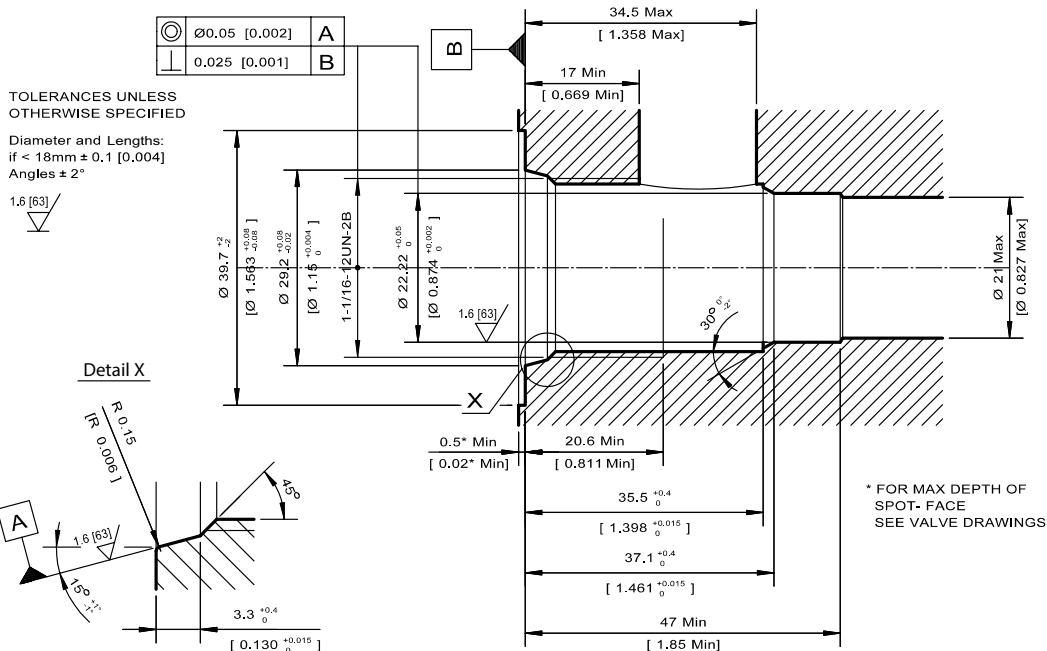


# Housings and Cavities

## SDC12-2

### DIMENSIONS

mm [in]



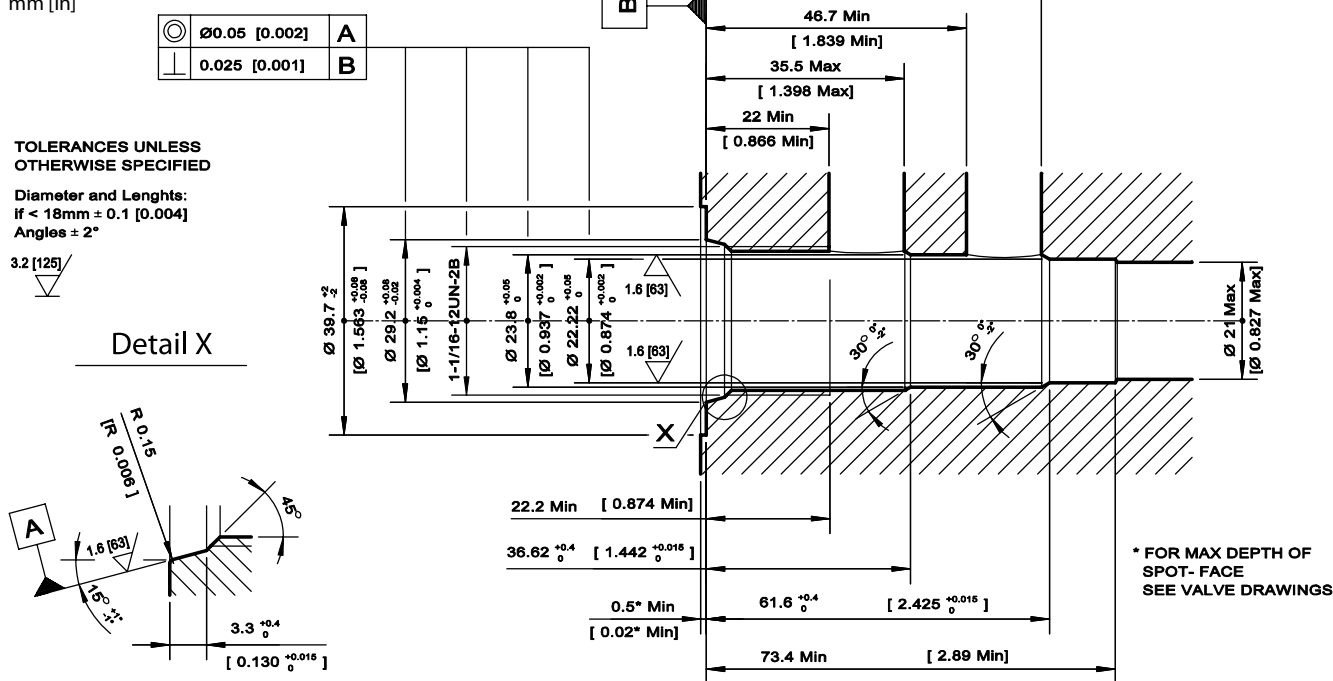
#### Caution!

SDC12-2 and CP12-2 are not interchangeable.  
Differences in sealing area depth may lead to leakage  
if the wrong valve is used with this cavity. Use only the specified cavity for each valve.

## SDC12-3

### DIMENSIONS

mm [in]



#### Caution

SDC12-3 and CP12-3 are not interchangeable. A cartridge designed to fit the SDC12-3 cavity will fit in the CP12-3 cavity but there is risk of the top backup ring between port 1 and port 2 not being covered in the cavity. If the cartridge has pressure at port 1 the risk of the back up ring extruding exists.

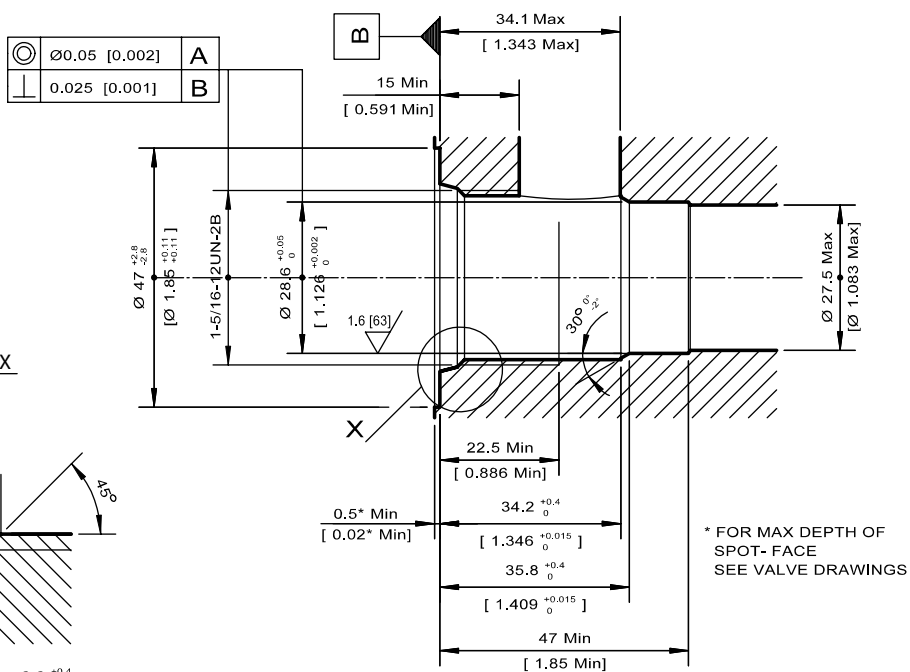
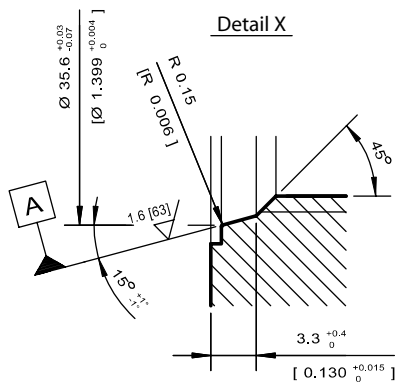
# Housings and Cavities

## SDC16-2

### DIMENSIONS

mm [in]

TOLERANCES UNLESS OTHERWISE SPECIFIED

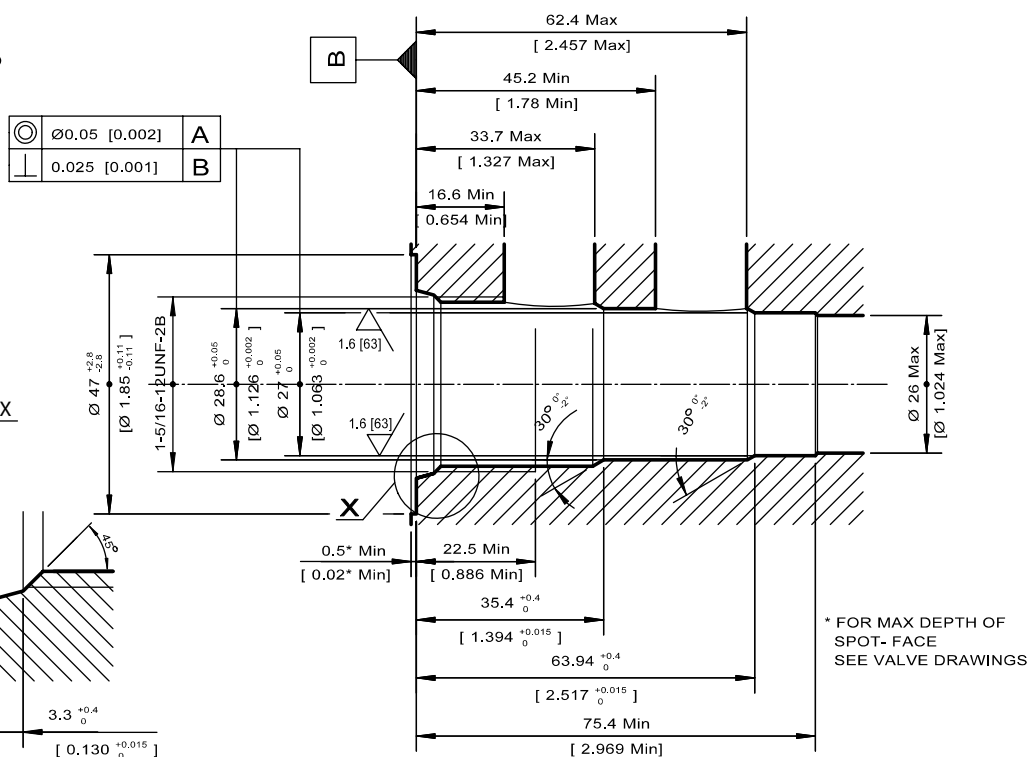
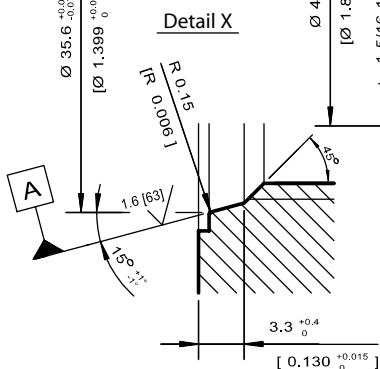
Diameter and Lengths:  
if < 18mm ± 0.1 [0.004]  
Angles ± 2°

## SDC16-3

### DIMENSIONS

mm [in]

TOLERANCES UNLESS OTHERWISE SPECIFIED

Diameter and Lengths:  
if < 18mm ± 0.1 [0.004]  
Angles ± 2°

# Housings and Cavities

## SDC16-3S

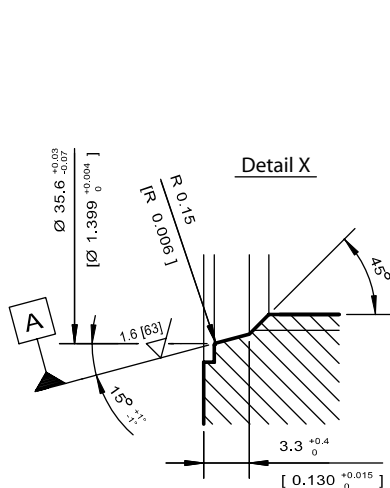
### DIMENSIONS

mm [in]

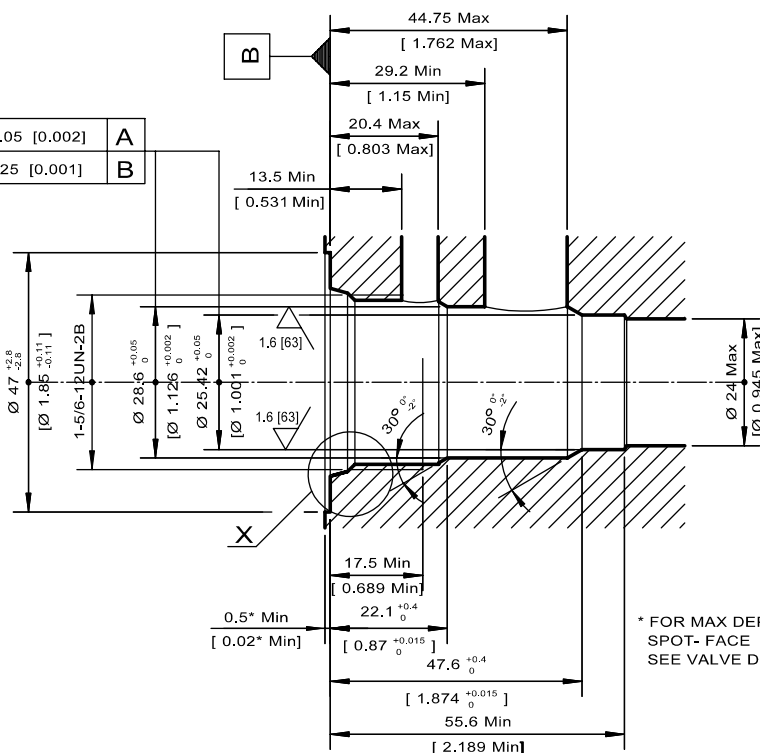
TOLERANCES UNLESS OTHERWISE SPECIFIED

Diameter and Lengths:  
if < 18mm ± 0.1 [0.004]  
Angles ± 2°

1.6 [63]



$\varnothing 0.05$ [0.002]	A
0.025 [0.001]	B



\* FOR MAX DEPTH OF SPOT-FACE SEE VALVE DRAWINGS

## SDC20-2

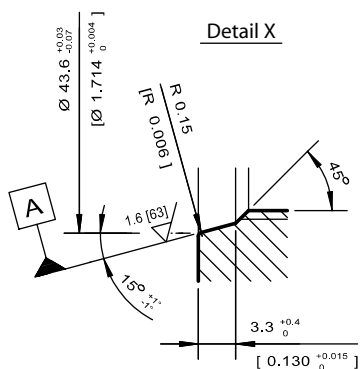
### DIMENSIONS

mm [in]

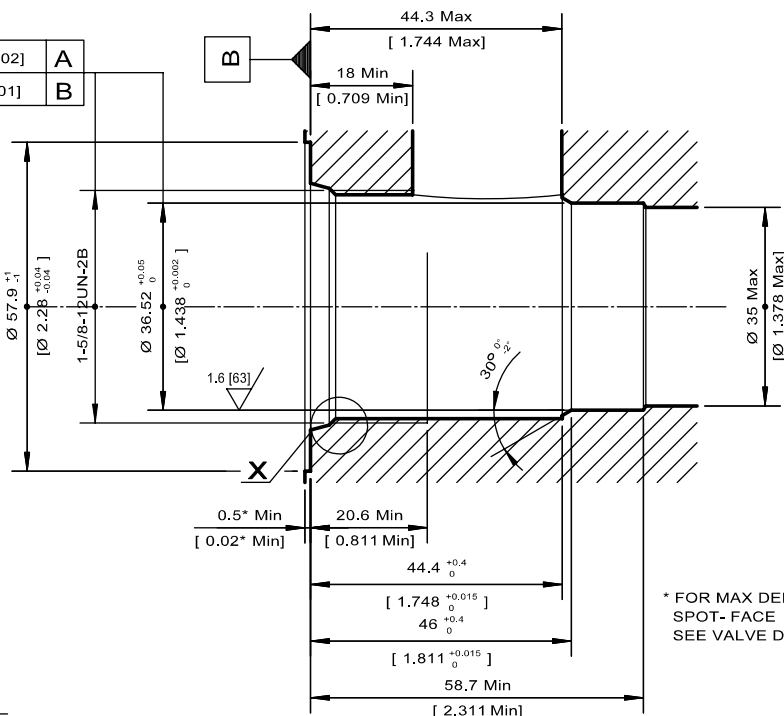
TOLERANCES UNLESS OTHERWISE SPECIFIED

Diameter and Lengths:  
if < 18mm ± 0.1 [0.004]  
Angles ± 2°

1.6 [63]



$\varnothing 0.05$ [0.002]	A
0.025 [0.001]	B



\* FOR MAX DEPTH OF SPOT-FACE SEE VALVE DRAWINGS

# Housings and Cavities

## SDC20-3

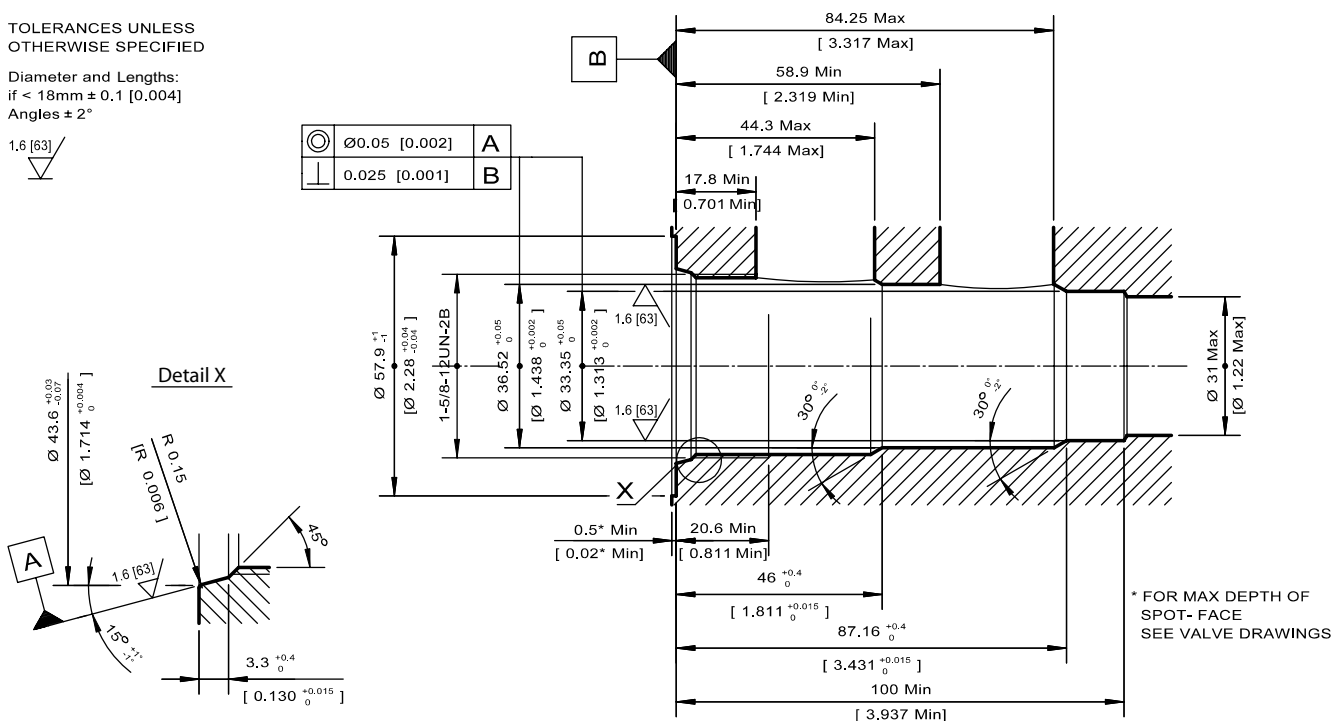
### DIMENSIONS

mm [in]

TOLERANCES UNLESS OTHERWISE SPECIFIED

Diameter and Lengths:  
if < 18mm ± 0.1 [0.004]  
Angles ± 2°

1.6 [63]



## SDC20-4

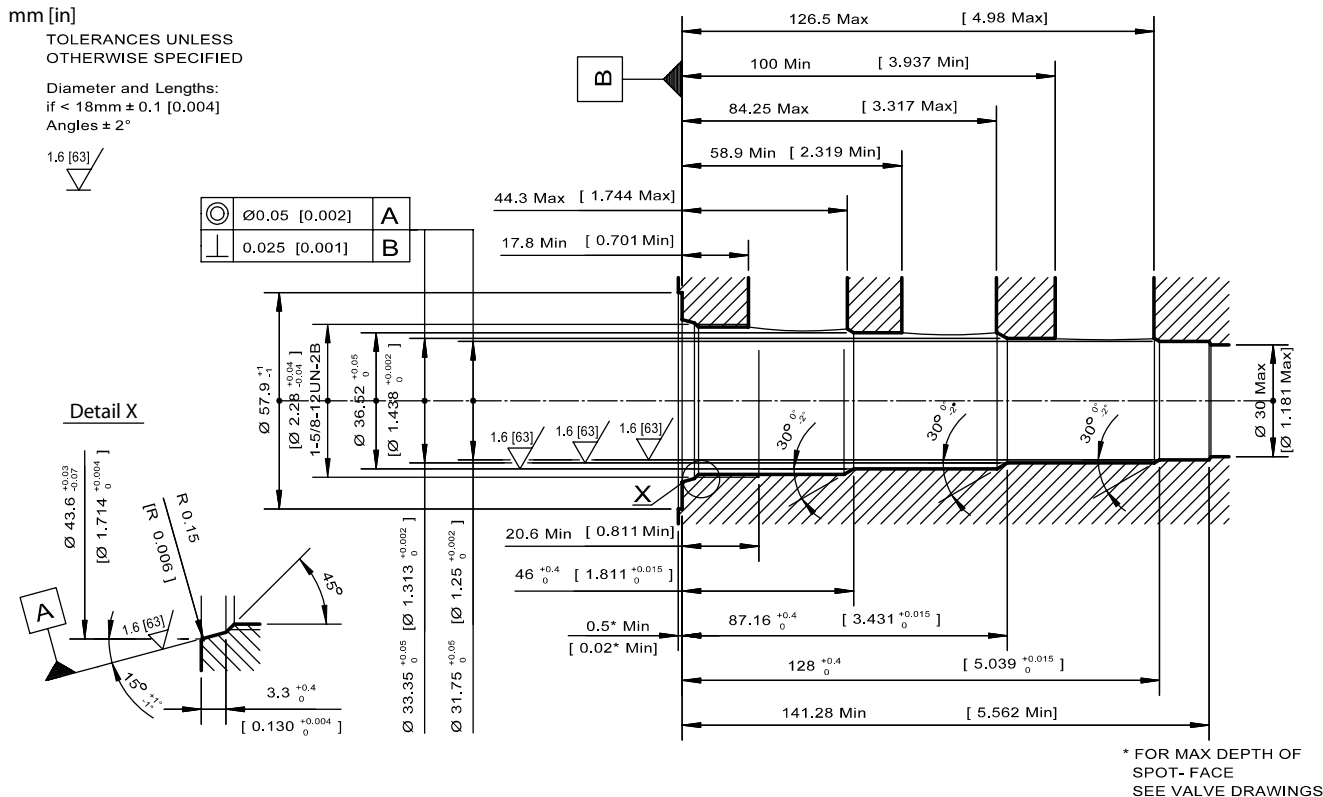
### DIMENSIONS

mm [in]

TOLERANCES UNLESS OTHERWISE SPECIFIED

Diameter and Lengths:  
if < 18mm ± 0.1 [0.004]  
Angles ± 2°

1.6 [63]



# Housings and Cavities

## VME08

### ■ DIMENSIONS

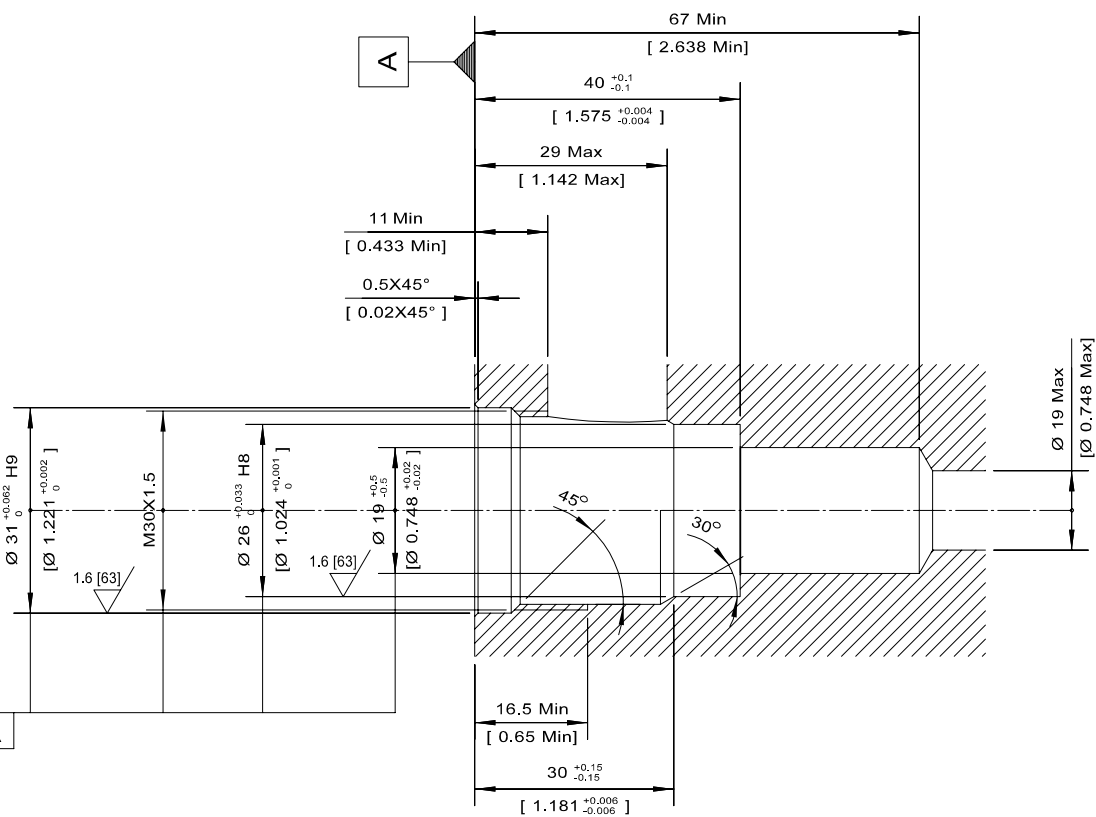
mm [in]

TOLERANCES UNLESS OTHERWISE SPECIFIED

Diameter and Lengths:  
if < 18mm ± 0.1 [0.004]  
Angles ± 2°

3.2 [125]

	Ø0.05 [0.002]	
	0.025 [0.001]	A

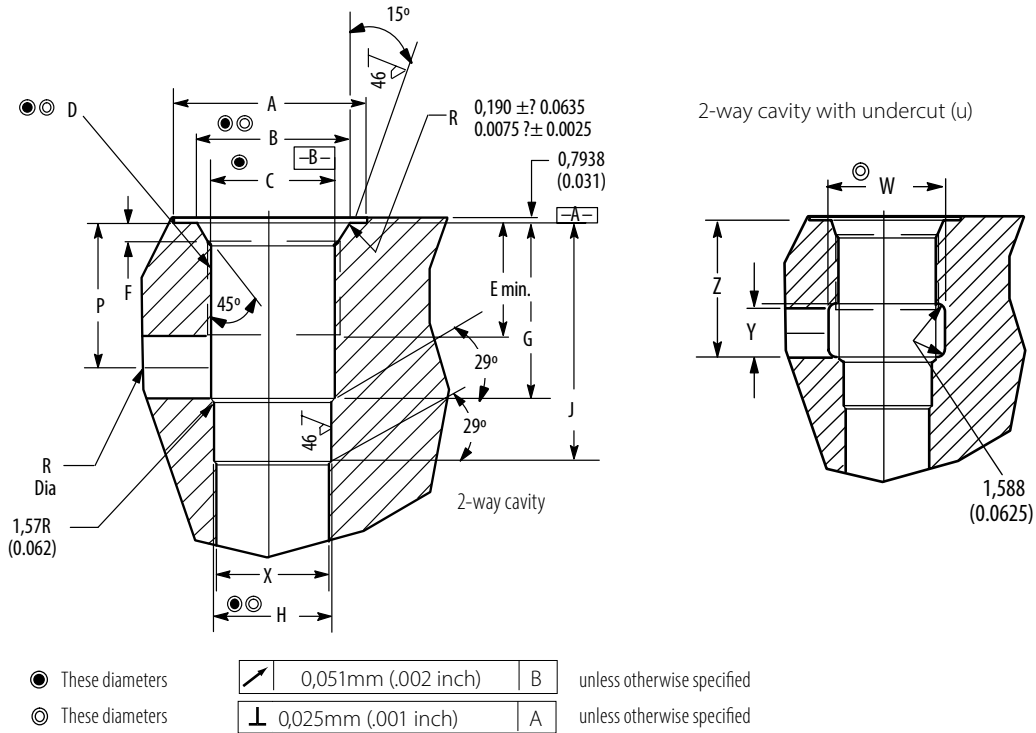


# Housings and Cavities

## C-\*\*-2

### DIMENSIONS

mm [in]



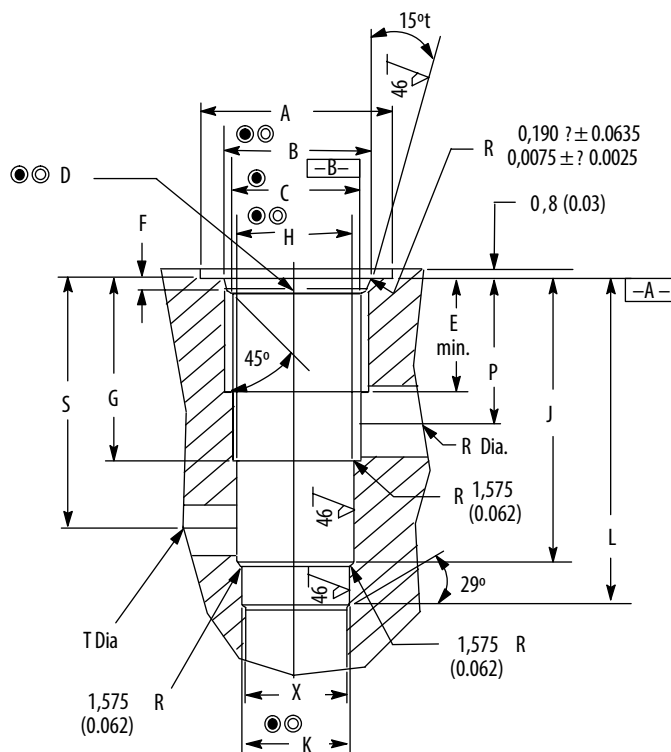
Cavity	A	B	C	D	E	F	G	H	J	P	R	X
mm (inch)	Spotface	+0,051 (+0,002)	±0,051 (±0,002)	Thread	Full thread			±0,0254 (±0,001)		Max. Dia.	Max. Dia.	
C-4-2	21,03 (0.828)	12,37 (0.487)	9,80 (0.386)	.4375"—20	9,53 (0.375)	2,36-2,74 (0.093-0.108)	15,49 (0.610)	8,74 (0.344)	23,37 (0.920)	9,93 (0.391)	6,35 (0.250)	6,35 (0.25)
C-8-2	30,16 (1.188)	20,65 (0.813)	17,47 (0.688)	.750"—16	12,70 (0.500)	2,54-2,92 (0.100-0.115)	19,05 (0.750)	12,72 (0.501)	30,17 (1.188)	14,68 (0.578)	8,74 (0.344)	11,11 (0.438)
C-10-2	30,16 (1.188)	24,00 (0.945)	20,62 (0.812)	.875"—14	15,88 (0.625)	2,54-2,92 (0.100-0.115)	23,81 (0.937)	15,90 (0.626)	33,32 (1.312)	18,23 (0.718)	11,11 (0.437)	14,29 (0.562)
C-12-2(U)	38,10 (1.500)	29,15 (1.148)	24,76 (0.975)	1.062"—12	22,22 (0.875)	3,30/3,68 (0.130-0.145)	34,92 (1.375)	23,82 (0.938)	46,35 (1.825)	27,94 (1.100)	12,70 (0.500)	22,22 (0.875)
C-16-2	44,45 (1.750)	35,58 (1.401)	31,34 (1.234)	1.312"—12	22,22 (0.875)	3,30/3,68 (0.130-0.145)	34,14 (1.344)	28,62 (1.127)	46,84 (1.844)	24,60 (0.968)	19,05 (0.750)	19,05 (0.750)
C-20-2	57,66 (2.270)	43,59 (1.716)	39,12 (1.540)	1.625"—12	20,64 (0.812)	3,35/3,73 (0.132-0.147)	44,45 (1.750)	36,55 (1.439)	58,72 (2.312)	30,96 (1.218)	25,40 (1.000)	25,40 (1.000)

# Housings and Cavities

## C-\*\*-3

### ■ DIMENSIONS

mm [in]



⊙ These diameters

$\sqrt{\text{ }}$  0,051mm (.002 inch) B  
unless otherwise specified

⊙ These diameters

$\perp$  0,025mm (.001 inch) A  
unless otherwise specified

Cavity	A	B	C	D	E	F	G	H
mm (inch)	Spotface	$\pm 0,051 (\pm 0.002)$	$\pm 0,051 (\pm 0.002)$	Thread	Full thread			$(\pm 0,0254) (\pm 0.001)$
C-8-3	30,16 (1.188)	20,65 (0.813)	17,47 (0.688)	.750"—16	12,70 (0.500)	2,54-2,92 (0.100-0.115)	18,23 (0.718)	15,90 (0.626)
C-10-3	30,16 (1.188)	24,00 (0.945)	20,62 (0.812)	.875"—14	15,87 (0.625)	2,54-2,92 (0.100-0.115)	21,59 (0.850)	17,50 (0.689)
C-12-3	38,10 (1.500)	29,15 (1.148)	24,76 (0.975)	1.062"—12	22,22 (0.875)	3,30-3,68 (0.130-0.145)	34,92 (1.375)	23,82 (0.938)
C-16-3	44,45 (1.750)	35,58 (1.401)	31,34 (1.234)	1.312"—12	22,22 (0.875)	3,30-3,68 (0.130-0.145)	34,13 (1.344)	28,62 (1.127)
C-20-3	57,66 (2.270)	43,59 (1.716)	39,12 (1.540)	1.625"—12	20,64 (0.812)	3,35-3,73 (0.132-0.147)	44,45 (1.750)	36,55 (1.439)

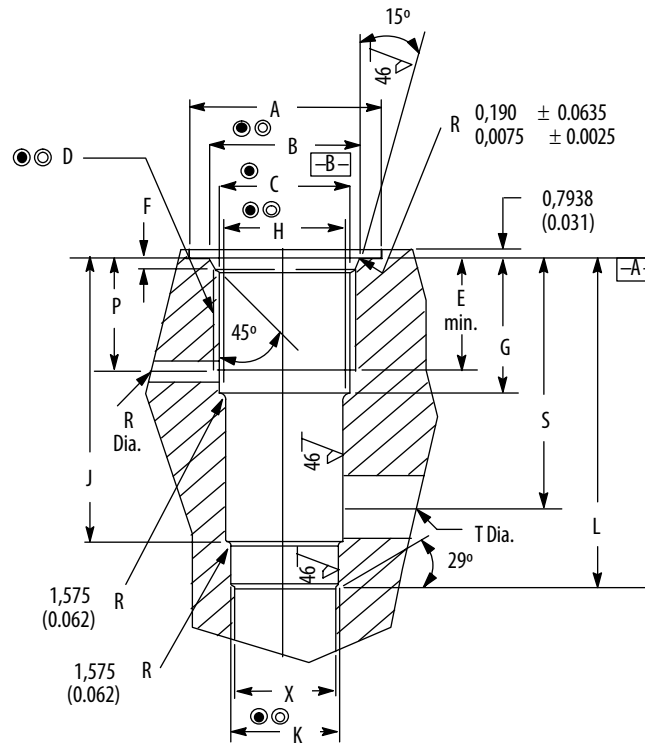
Cavity	J	K	L	P	R	S	T	X
mm (inch)		$(\pm 0,0254) (\pm 0.001)$			Max. Dia.		Max. Dia.	Max. Dia.
C-8-3	33,25 (1.270)	14,30 (0.563)	43,25 (1.703)	14,68 (0.578)	5,94 (0.234)	28,98 (1.141)	5,94 (0.234)	12,70 (0.500)
C-10-3	38,10 (1.500)	15,90 (0.626)	47,62 (1.875)	18,26 (0.719)	6,35 (0.250)	34,13 (1.344)	6,35 (0.250)	14,27 (0.562)
C-12-3	57,78 (2.275)	22,25 (0.876)	69,21 (2.725)	27,94 (1.100)	12,70 (0.500)	50,80 (2.000)	12,70 (0.500)	20,62 (0.812)
C-16-3	62,71 (2.469)	27,02 (1.064)	75,39 (2.968)	24,60 (0.969)	15,88 (0.625)	53,18 (2.093)	15,88 (0.625)	19,05 (0.750)
C-20-3	85,72 (3.375)	33,38 (1.314)	100,02 (3.938)	30,96 (1.218)	25,40 (1.00)	71,44 (2.812)	25,40 (1.000)	30,16 (1.188)

# Housings and Cavities

## C-\*\*-3S

### DIMENSIONS

mm [in]



● These diameters

◎ These diameters

	0,051mm (.002 inch)	B	unless otherwise specified
	0,025mm (.001 inch)	A	unless otherwise specified

Cavity	A	B	C	D	E	F	G	H
mm (inch)	Spotfac	±0,051 (±0.002)	±0,051 (±0.002)	Thread	Full thread			±0,0254 (±0.001)
C-10-3S	30,16 (1.188)	24,00 (0.945)	20,62 (0.812)	0.875"–14	14,29 (0.562)	2,54-2,92 (0.100-0.115)	16,51 (0.650)	19,08 (0.751)
C-12-3S	38,10 (1.500)	29,15 (1.148)	24,76 (0.975)	1.062"–12	22,22 (0.875)	3,30-3,68 (0.130-0.145)	25,40 (1.000)	23,82 (0.938)
C-16-3S	44,45 (1.750)	35,58 (1.401)	31,34 (1.234)	1.312"–12	17,46 (0.687)	3,30-3,68 (0.130-0.145)	20,62 (0.812)	28,62 (1.127)
C-20-3S	57,66 (2.270)	43,59 (1.716)	39,12 (1.540)	1.625"–12	20,64 (0.812)	3,35-3,73 (0.132-0.147)	23,82 (0.938)	36,55 (1.439)

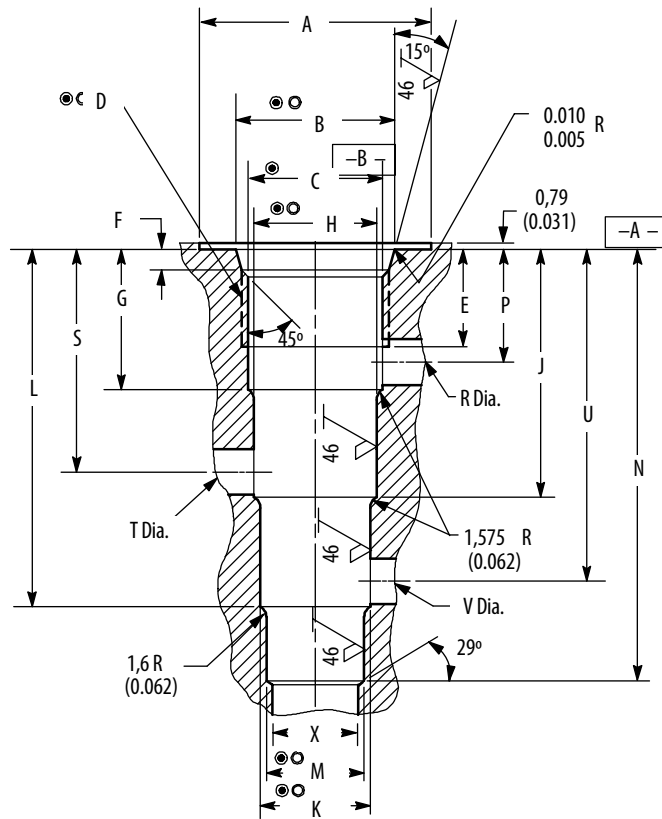
Cavity	J	K	L	P	R	S	T	X
mm (inch)		±0,0254 (±0.001)			Max. Dia.		Max. Dia.	Max. Dia.
C-10-3S	38,48 (1.515)	17,50 (0.689)	47,62 (1.875)	14,29 (0.562)	3,18 30,96 (0.125)	13,49 (1.218)	15,88 (0.531)	(0.625)
C-12-3S	48,26 (1.900)	22,25 (0.876)	59,69 (2.350)	22,22 (0.875)	4,82 41,27 (0.190)	12,70 (1.625)	20,62 (0.500)	(0.812)
C-16-3S	46,02 (1.812)	25,45 (1.002)	55,58 (2.188)	16,67 (0.656)	6,35 37,31 (0.250)	15,88 (1.468)	19,05 (0.625)	(0.750)
C-20-3S	64,29 (2.531)	33,38 (1.314)	77,77 (3.062)	19,84 (0.781)	6,35 50,00 (0.250)	25,40 (1.968)	30,16 (1.000)	(1.188)

# Housings and Cavities

## C-\*\*-4

### ■ DIMENSIONS

mm [in]



⊙ These diameters

$\begin{array}{|c|c|} \hline \text{---} & 0,051\text{mm (.002 inch) B \\ \hline \end{array}$   
unless otherwise specified

⊙ These diameters

$\begin{array}{|c|c|} \hline \text{---} & 0,025\text{mm (.001 inch) A \\ \hline \end{array}$   
unless otherwise specified

Cavity	A	B	C	D	E	F	G	H	J	K
mm (inch)	Spotface	$\pm 0,051$ ( $\pm 0,002$ )	$\pm 0,051$ ( $\pm 0,002$ )	Thread	Full thread			$\pm 0,0254$ ( $\pm 0,001$ )		$\pm 0,0254$ ( $\pm 0,001$ )
C-8-4	30,16 (1.188)	20,65 (0.813)	17,47 (0.688)	0.750"—16	12,70 (0.500)	2,54-2,92 (0.100-0.115)	18,24 (0.718)	15,90 (0.626)	32,26 (1.270)	14,30 (0.563)
C-10-4	30,16 (1.188)	24,00 (0.945)	20,62 (0.812)	0.875"—14	15,88 (0.625)	2,54-2,92 (0.100-0.115)	22,22 (0.875)	19,08 (0.751)	38,10 (1.500)	17,50 (0.689)
C-12-4	38,10 (1.500)	29,15 (1.148)	24,76 (0.975)	1.062"—12	22,22 (0.875)	3,30-3,68 (0.130-0.145)	34,92 (1.375)	23,82 (0.938)	57,78 (2.275)	22,25 (0.876)
C-16-4	44,45 (1.750)	35,58 (1.401)	31,34 (1.234)	1.312"—12	22,22 (0.875)	3,30-3,68 (0.130-0.145)	34,14 (1.344)	28,62 (1.127)	62,71 (2.469)	27,02 (1.064)
C-20-4	57,66 (2.270)	43,59 (1.716)	39,12 (1.540)	1.625"—12	20,64 (0.812)	3,35-3,73 (0.132-0.147)	44,45 (1.750)	36,55 (1.439)	85,72 (3.375)	33,38 (1.314)

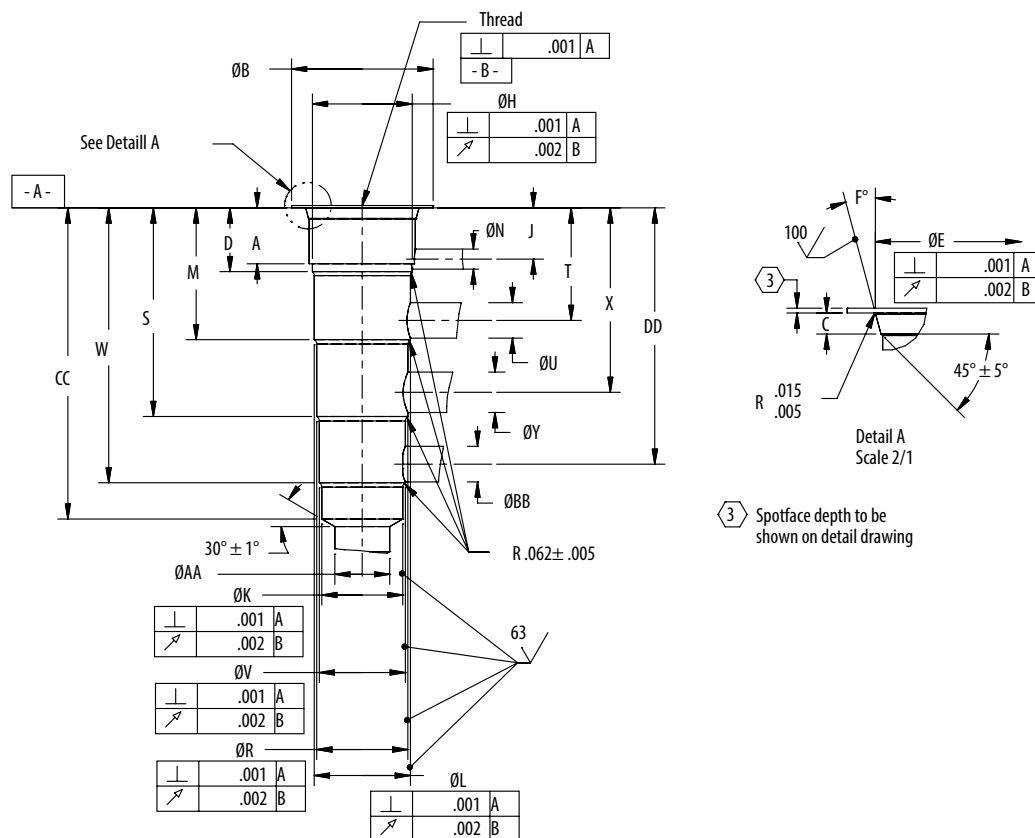
Cavity	L	M	N	P	R	S	T	U	V	X
mm (inch)		$\pm 0,0254$ ( $\pm 0,001$ )			Max. Dia.		Max. Dia.			Max. Dia.
C-8-4	46,48 (1.830)	12,72 (0.501)	56,13 (2.210)	14,68 (0.578)	5,94 (0.234)	28,98 (1.141)	5,94 (0.234)	43,25 (1.703)	5,94 (0.234)	11,13 (0.438)
C-10-4	53,98 (2.125)	15,90 (0.626)	63,50 (2.500)	18,26 (0.718)	6,35 (0.250)	34,13 (1.343)	6,35 (0.250)	50,00 (1.968)	6,35 (0.250)	14,29 (0.562)
C-12-4	80,64 (3.175)	20,65 (0.813)	92,07 (3.625)	27,94 (1.100)	12,70 (0.500)	50,80 (2.000)	12,70 (0.500)	73,66 (2.900)	12,70 (0.500)	19,05 (0.750)
C-16-4	91,29 (3.594)	25,45 (1.002)	103,99 (4.094)	24,60 (0.968)	15,88 (0.625)	53,16 (2.093)	15,88 (0.625)	81,76 (3.218)	15,88 (0.625)	19,05 (0.750)
C-20-4	127,00 (5.000)	31,78 (1.251)	141,27 (5.562)	30,96 (1.218)	25,40 (1.000)	71,44 (2.812)	25,40 (1.000)	112,71 (4.437)	25,40 (1.000)	30,16 (1.188)

# Housings and Cavities

## C-\*\*-5S

### DIMENSIONS

mm [in]



Cavity	Thread	A	B	C	D	E	F	H	K	L	M	N
		±0,13 (±0.005)	±0,13 (±0.005)	+0,38 (+0.005) (-0.0)	±0,13 (±0.005)	±0,05 (±0.002)	±1°	Min Max	±0,03 (±0.001)	±0,03 (±0.001)	±0,13 (±0.005)	Max
C-8-5S	0.75"—16	12,70 (0.500)	30,16 (1.188)	2,54 (0.100)	14,48 (0.570)	20,65 (0.813)	15	17,42 - 17,52 (0.686-0.690)	11,13 (0.438)	15,90 (0.626)	29,51 (1.162)	3,81 (0.150)
C-10-5S	0.875"—12	15,88 (0.625)	30,16 (1.188)	2,54 (0.100)	22,09 (0.870)	24,00 (0.945)	15	20,57 - 20,67 (0.810-0.814)	14,30 (0.563)	19,08 (0.751)	38,10 (1.500)	6,76 (0.266)
C-12-5S	1.0625"—12	17,53 (0.690)	38,10 (1.500)	2,54 (0.100)	19,79 (0.779)	29,21 (1.150)	15	24,69 - 24,79 (0.972-0.976)	19,08 (0.751)	23,83 (0.938)	38,84 (1.529)	4,78 (0.188)
C-16-5S	1.3125"—12	17,53 (0.690)	44,45 (1.750)	3,30 (0.130)	20,02 (0.788)	35,59 (1.401)	15	31,29 - 31,39 (1.232-1.236)	25,45 (1.002)	30,20 (1.189)	41,40 (1.630)	6,35 (0.250)
C-20-5S	1.625"—12	17,53 (0.690)	57,66 (2.270)	3,35 (0.132)	20,02 (0.788)	43,59 (1.716)	15	39,12 - 39,29 (1.543-1.547)	33,38 (1.314)	38,16 (1.502)	44,45 (1.750)	6,35 (0.250)

Cavity	J	R	S	U	T	V	W	Y	X	AA	BB	CC	DD
	±0,13 (±0.005)	±0,03 (±0.001)	±0,13 (±0.005)	Max	±0,13 (±0.005)	±0,03 (±0.001)	±0,13 (±0.005)	Max	±0,13 (±0.005)	Max	±0,13 Max	±0,13 (±0.005)	±0,13 (±0.005)
C-8-5S	12,19 (0.480)	14,30 (0.563)	43,79 (1.724)	5,94 (0.234)	26,41 (1.040)	12,72 (0.501)	58,04 (2.285)	5,94 (0.234)	40,64 (1.600)	9,91 (0.390)	5,94 (0.234)	66,80 (2.630)	54,86 (2.160)
C-10-5S	18,26 (0.719)	17,50 (0.689)	53,98 (2.125)	6,75 (0.266)	33,78 (1.330)	15,90 (0.626)	69,85 (2.750)	6,76 (0.266)	49,78 (1.960)	13,00 (0.512)	6,76 (0.266)	79,38 (3.125)	65,79 (2.590)
C-12-5S	15,88 (0.625)	22,25 (0.876)	59,44 (2.340)	9,53 (0.375)	33,32 (1.312)	20,65 (0.813)	78,51 (3.091)	11,13 (0.438)	53,19 (2.094)	17,45 (0.687)	9,53 (0.375)	88,14 (3.470)	73,03 (2.875)
C-16-5S	16,08 (0.633)	28,63 (1.127)	65,56 (2.581)	11,18 (0.440)	35,36 (1.392)	27,03 (1.064)	86,33 (3.399)	12,70 (0.500)	57,94 (2.281)	19,05 (0.750)	11,18 (0.440)	97,69 (3.846)	80,52 (3.170)
C-20-5S	16,00 (0.630)	36,55 (1.439)	70,10 (2.760)	36,83 (0.562)	36,83 (1.450)	34,98 (1.377)	94,23 (3.710)	15,09 (0.594)	61,47 (2.420)	25,40 (1.000)	14,22 (0.560)	106,69 (4.200)	86,61 (3.410)

*Danfoss*