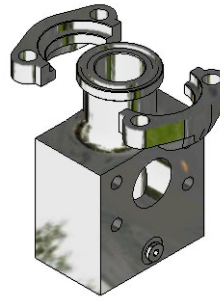
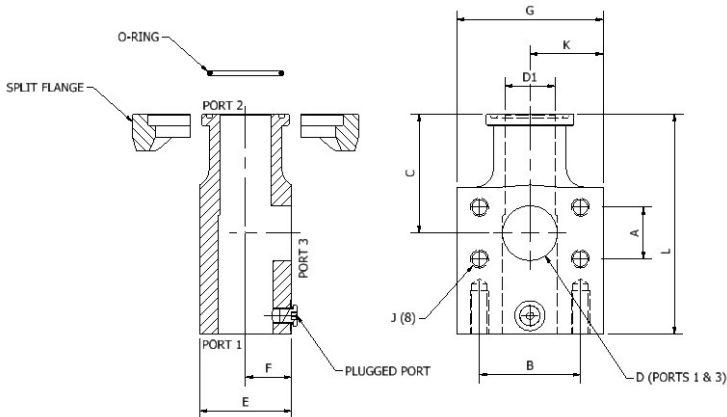


SAE 3000 PSI Split Flange Run Tee Complete Assembly

SAE J518 Code 61 (ISO 6162-1) Flange Style



Complete Flange Set Includes:

- One (1) Split Flange Tee
- One (1) Sets (2 Halves) Split Flanges
- One (1) O-Ring
- One (1) Component Bolt Kit

A/SFRT34 - Split Flange Run Tee Assembly Flat Face with Threaded Holes Complete with Buna O-Rings and #4 SAE Port (Plugged), NPS

Size	Complete Assembly Part Number	Dimensions (in)										Thread UNC-2B	O-Ring (Buna) Part Number	Assembly WT lbs (kg)	Body Only Part Number	Body Only WT lbs (kg)	Working Pressure PSI (bar)
		A	B	C	D	D1	E	F	G	K	L						
1/2"	A/SFRT34-050-*^-^	0.69	1.50	2.12	0.50	0.38	2.00	1.00	2.50	1.25	4.00	5/16"-18	OR^-2-210	3.97 (1.80)	SFRT34-050-*^-^	3.55 (1.61)	5000 (350)
3/4"	A/SFRT34-075-*^-^	0.88	1.88	2.75	0.75	0.63	2.00	1.00	3.00	1.50	5.00	3/8"-16	OR^-2-214	5.81 (2.64)	SFRT34-075-*^-^	5.30 (2.41)	5000 (350)
1"	A/SFRT34-100-*^-^	1.03	2.06	2.75	0.94	0.88	2.00	1.00	3.00	1.50	5.00	3/8"-16	OR^-2-219	5.85 (2.65)	SFRT34-100-*^-^	5.20 (2.36)	5000 (350)
1-1/4"	A/SFRT34-125-*^-^	1.19	2.31	3.25	1.25	1.13	2.25	1.13	3.00	1.50	6.00	7/16"-14	OR^-2-222	7.06 (3.20)	SFRT34-125-*^-^	6.17 (2.80)	4000 (280)
1-1/2"	A/SFRT34-150-*^-^	1.41	2.75	3.25	1.50	1.38	2.50	1.25	4.00	2.00	6.00	1/2"-13	OR^-2-225	11.04 (5.01)	SFRT34-150-*^-^	9.60 (4.35)	4000 (280)
2"	A/SFRT34-200-*^-^	1.69	3.06	3.50	1.94	1.88	3.00	1.50	4.00	2.00	6.50	1/2"-13	OR^-2-228	13.36 (6.06)	SFRT34-200-*^-^	11.80 (5.35)	4000 (280)
2-1/2"	A/SFRT34-250-*^-^	2.00	3.50	4.00	2.38	2.38	3.50	1.75	4.50	2.25	7.25	1/2"-13	OR^-2-232	18.33 (8.31)	SFRT34-250-*^-^	16.20 (7.35)	3000 (210)
3"	A/SFRT34-300-*^-^	2.44	4.19	4.75	2.88	2.88	4.00	2.00	5.50	2.75	8.50	5/8"-11	OR^-2-237	30.66 (13.91)	SFRT34-300-*^-^	27.01 (12.25)	3000 (210)

A/SFRTM34 - Split Flange Run Tee Assembly Flat Face with Threaded Holes Complete with Buna O-Ring and G1/8 Port (Plugged), Metric

Size	Complete Assembly Part Number	Dimensions (mm)										Thread	O-Ring (Buna) Part Number	Assembly WT lbs (kg)	Body Only Part Number	Body Only WT lbs (kg)	Working Pressure PSI (bar)
		A	B	C	D	D1	E	F	G	K	L						
1/2"	A/SFRTM34-050-*^-^	17.5	38.1	53.8	12.7	9.7	50.8	25.4	63.5	31.8	101.6	M8 x 1.25	OR^-2-210	3.97 (1.80)	SFRTM34-050-*^-^	3.55 (1.61)	5000 (350)
3/4"	A/SFRTM34-075-*^-^	22.4	47.8	69.9	19.1	16.0	50.8	25.4	76.2	38.1	127.0	M10 x 1.50	OR^-2-214	5.81 (2.64)	SFRTM34-075-*^-^	5.30 (2.41)	5000 (350)
1"	A/SFRTM34-100-*^-^	26.2	52.3	69.9	23.9	22.4	50.8	25.4	76.2	38.1	127.0	M10 x 1.50	OR^-2-219	5.85 (2.65)	SFRTM34-100-*^-^	5.20 (2.36)	5000 (350)
1-1/4"	A/SFRTM34-125-*^-^	30.2	58.7	82.6	31.8	28.7	57.2	28.7	76.2	38.1	152.4	M10 x 1.50	OR^-2-222	7.06 (3.20)	SFRTM34-125-*^-^	6.17 (2.80)	4000 (280)
1-1/2"	A/SFRTM34-150-*^-^	35.8	69.9	82.6	38.1	35.1	63.5	31.8	101.6	50.8	152.4	M12 x 1.75	OR^-2-225	11.04 (5.01)	SFRTM34-150-*^-^	9.60 (4.35)	4000 (280)
2"	A/SFRTM34-200-*^-^	42.9	77.7	88.9	49.3	47.8	76.2	38.1	101.6	50.8	165.1	M12 x 1.75	OR^-2-228	13.36 (6.06)	SFRTM34-200-*^-^	11.80 (5.35)	4000 (280)
2-1/2"	A/SFRTM34-250-*^-^	50.8	88.9	101.6	60.5	60.5	88.9	44.5	114.3	57.2	184.2	M12 x 1.75	OR^-2-232	18.33 (8.31)	SFRTM34-250-*^-^	16.20 (7.35)	3000 (210)
3"	A/SFRTM34-300-*^-^	62.0	106.4	120.7	73.2	73.2	101.6	50.8	139.7	69.9	215.9	M16 x 2.00	OR^-2-237	30.66 (13.91)	SFRTM34-300-*^-^	27.01 (12.25)	3000 (210)

*** Materials:**

Standard, No Designation = All Carbon Steel, Zinc Nickel Plated.
 SS = Stainless Steel, Type 316.

^ O-Ring Type:

Standard, No Designation = Buna Nitrile.
 V = Viton.

Ordering Example: A/SFRT34-200-SS-V

