

### TECHNICAL DATA

Body Type	Line mount
Interface	None
Body Features	Cushion lock with make up checks
Mounting Hole Diameter	.41 in.
Mounting Hole Depth	Through
Mounting Hole Quantity	2
Open Cavities	2
Cavity	T-2A
Port Size	3/4" BSPP
Model Weight	4.46 lb.

**NOTES** *Important:* Carefully consider the maximum system pressure. The pressure rating of the manifold is dependent on the manifold material, with the port type/size a secondary consideration. Manifolds constructed of aluminum are not rated for pressures higher than 3000 psi (210 bar), regardless of the port type/size specified.

## PORT DESIGNATORS

Modifiers	Ports
BPW, /10, /11, /15, /16, /V	Ports C1, C2, V1, V2: 3/4" BSPP; Port T: 3/4" BSPP;

## INCLUDED COMPONENTS

Part	Description	Quantity
CXEDXAN	Cartridge	2
CXFAXAN	Cartridge	2

## CONFIGURATION OPTIONS

Model Code Example: BPWArray

### MODIFIER

**6061-T651 Aluminum, Buna-N**

**/10** 6061-T651 Aluminum, Buna-N, Black Anodize - Per MIL SPEC 8625F Type II, Class II

**/11** 6061-T651 Aluminum, Buna-N, Clear Anodize - Per MIL SPEC 8625F Type II, Class I

**/15** 6061-T651 Aluminum, Viton, Black Anodize - Per MIL SPEC 8625F Type II, Class II

**/16** 6061-T651 Aluminum, Viton, Clear Anodize - Per MIL SPEC 8625F Type II, Class I

**/V** 6061-T651 Aluminum, Viton

**/S** 65-45-12 Ductile Iron, Buna-N, Dewatering Oil

**/S3** 65-45-12 Ductile Iron, Buna-N, Trivalent Clear Zinc with Top Sealer

**/S4** 65-45-12 Ductile Iron, Buna-N, Chem. Black

**/S5** 65-45-12 Ductile Iron, Buna-N, Electroless Nickel

**/Y** 65-45-12 Ductile Iron, Viton, Dewatering Oil

**/Y3** 65-45-12 Ductile Iron, Viton, Trivalent Clear Zinc with Top Sealer

**/Y4** 65-45-12 Ductile Iron, Viton, Chem. Black

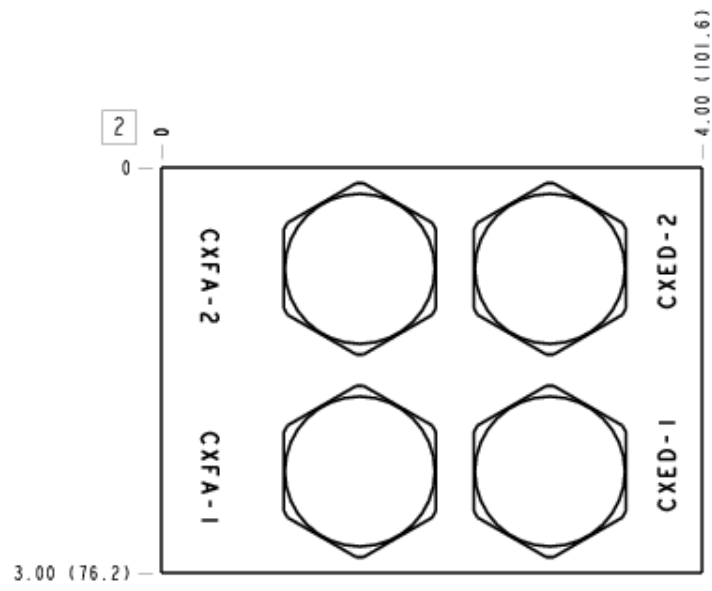
**/Y5** 65-45-12 Ductile Iron, Viton, Electroless Nickel

## MANIFOLD FACES

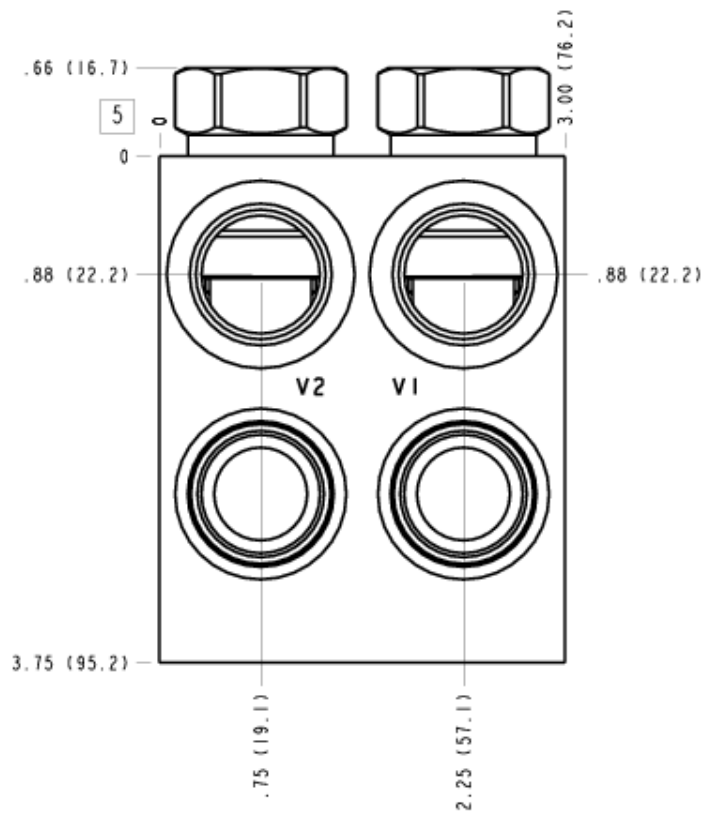
### FACE GRID

1	2	3	4
5	6	7	8
9	10	11	12

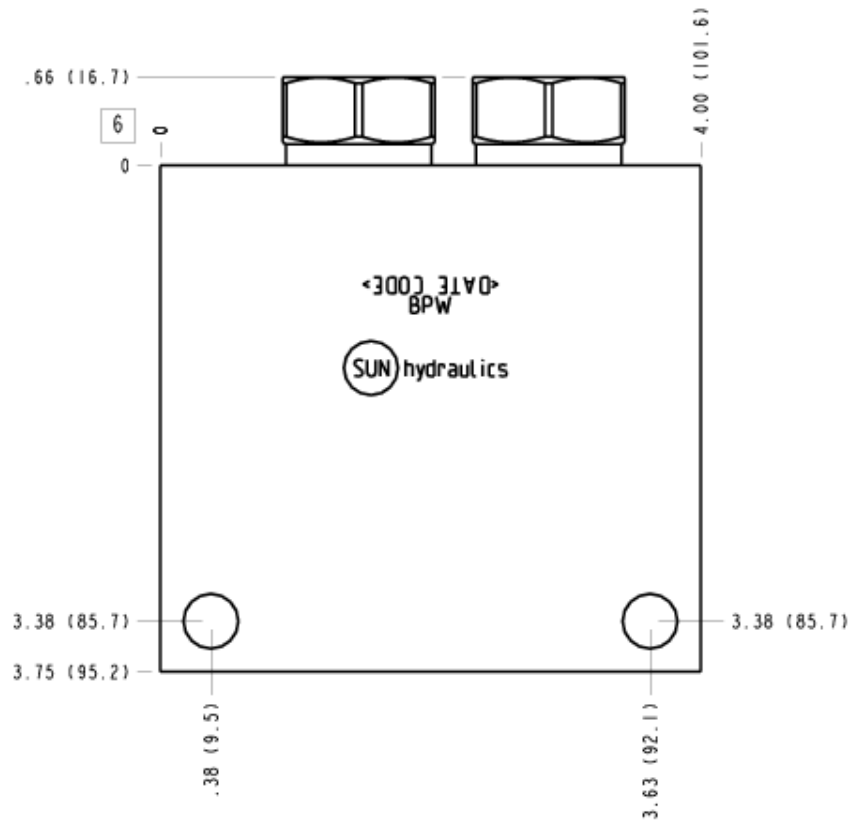
## Face 2



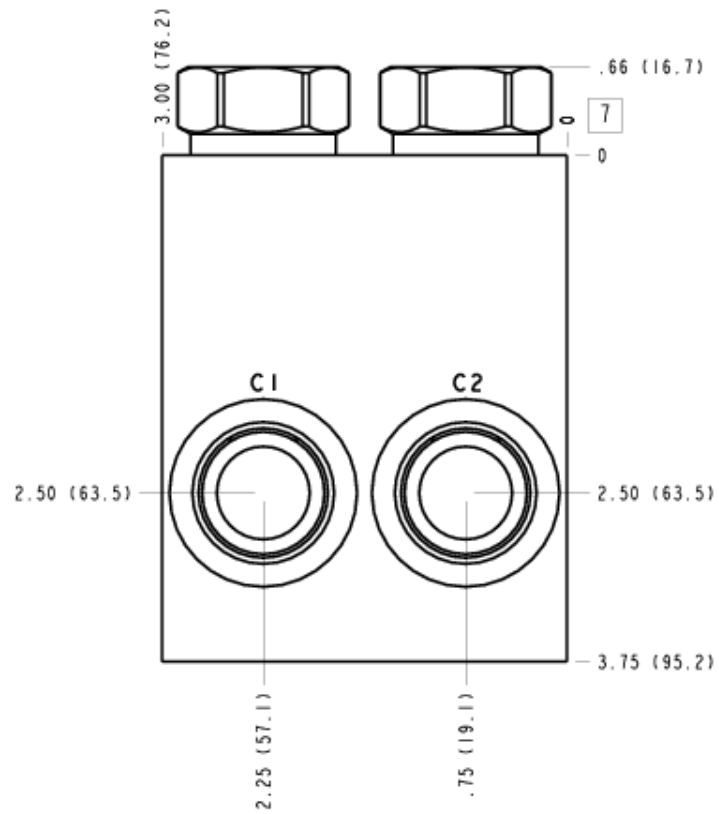
## Face 5



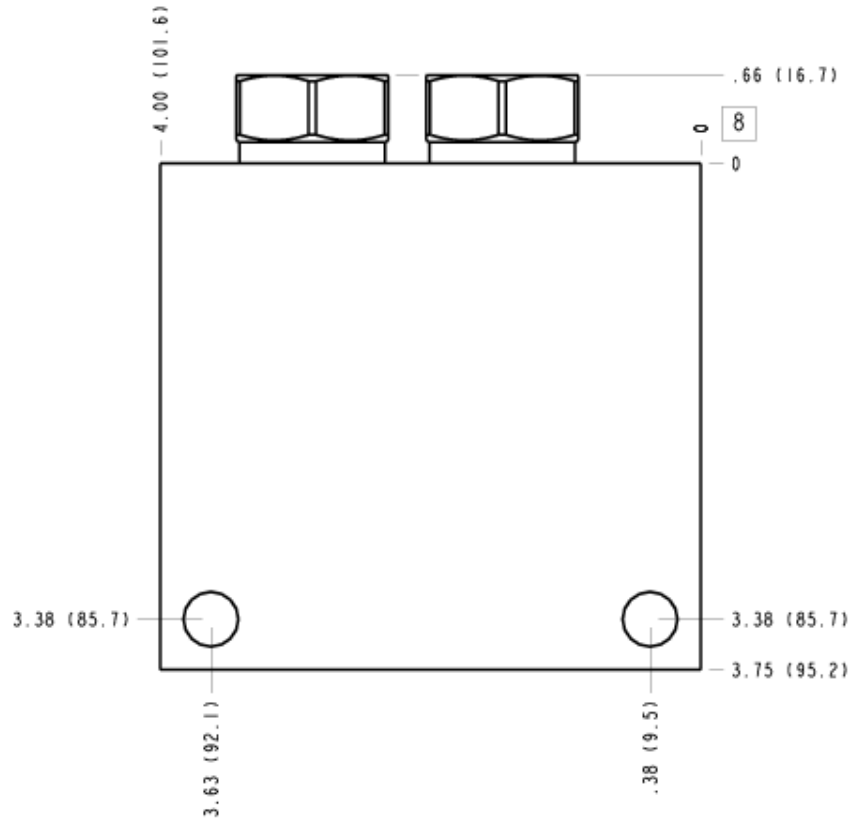
## Face 6



## Face 7



### Face 8



### Face 10

