

Check Valves

RPC 06

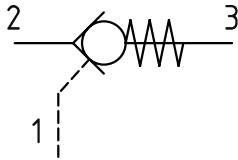


Pilot Operated Check Valve, Port 1 Pilot to Open
350 bar [5000 psi] • 35 l/min [9 US gpm]

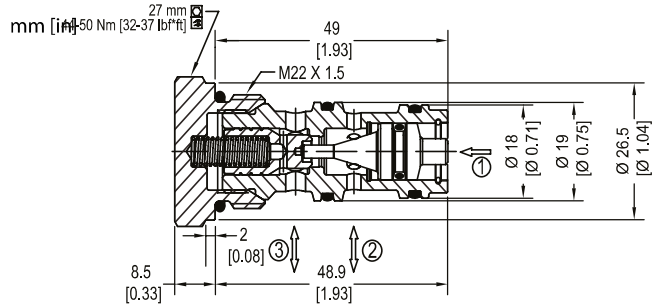
DESCRIPTION AND OPERATION

This is a pilot operated check valve where free flow takes place from port 2 to 3 and is blocked from port 3 to 2 until pilot pressure is applied to port 1.
Note: The RPC 06 is intended primarily for use in MVB10 modular valve assemblies. For other applications, consider valves with equivalent function, such as the 4CK30 or SPC2-10.

SCHEMATIC



DIMENSIONS

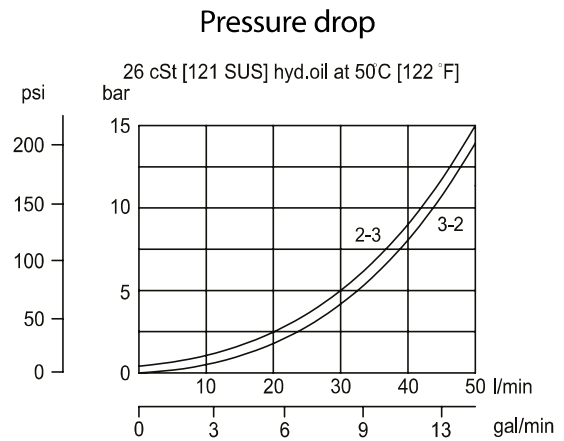


PERFORMANCE DATA

Rated pressure*	350 bar [5000 psi]
Rated flow at 7 bar [100 psi]	35 l/min [9 US gpm]
Weight	0.10 kg [0.22 lb]
Pilot Ratio	3.4:1
Cavity	NCS06/3

*Rated pressure based on NFPA fatigue test standard [at 1 million cycles]
 Note: A piston seal requires a 5 bar [72.5 psi] or greater return spring.

PERFORMANCE CURVES



MODEL CODE

RPC06 - 5 - OR - 00 - V

Crack Pressure

Code	Bar	Psi
0.5	0.5	[7]
2	2	[30]
5	5	[73]
10	10	[145]

Pilot Seal Option

Omit - No seals
 OR - Seals

Seal Option

Code	Seal kit
Omit-Buna-N	230000070
V-Viton	230000110

Housing

Code	Ports & Material	Housing Model Code
00	No Housing	
SE3/8	AL, 3/8 BSP	NCS06/3-SE-3/8
SE1/2	AL, 1/2 BSP	NCS06/3-SE-1/2
SE6S	AL, #6 SAE	NCS06/3-SE-6S
SE8S	AL, #8 SAE	NCS04/3-SE-8S

* Aluminum bodies are to be used for pressures less than 210 bar [3000 psi].
 * Additional housings available