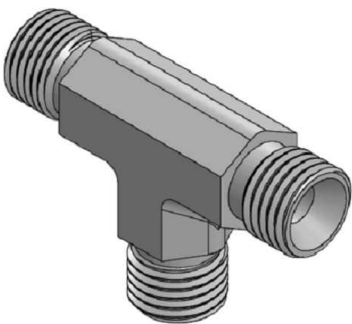
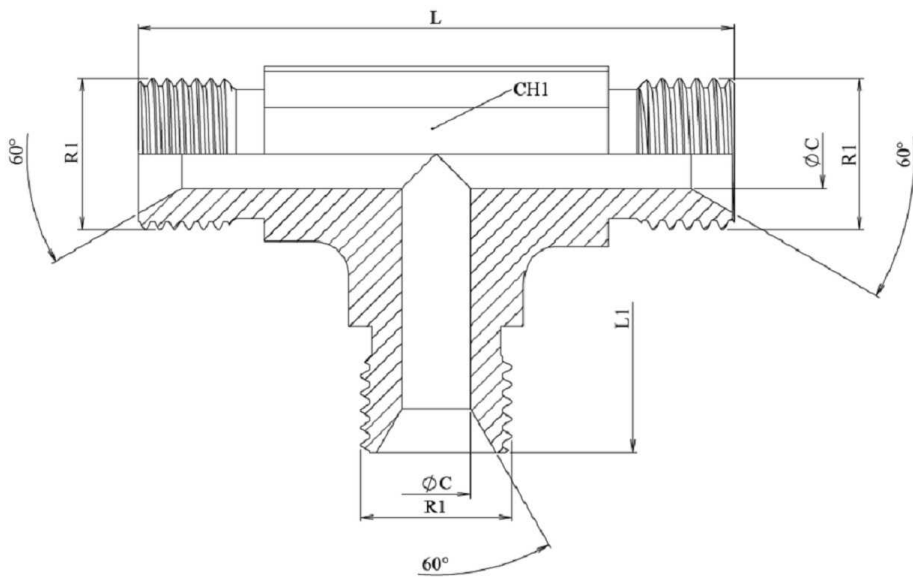


Tee BSP Male (60°) forge

Carbon steel

1/1



Part nº	R1	R2	R3	L	L1	CH1	ØC
S122002	1/8" BSP	1/8" BSP	1/8" BSP	41,5	20	10	3,6
S122004	1/4" BSP	1/4" BSP	1/4" BSP	52	26	14	6
S122006	3/8" BSP	3/8" BSP	3/8" BSP	60	30	17	8
S122008	1/2" BSP	1/2" BSP	1/2" BSP	70	35	22	11
S122012	3/4" BSP	3/4" BSP	3/4" BSP	84	42	27	16
S122016	1" BSP	1" BSP	1" BSP	94	47	36	22
S122020	1"1/4 BSP	1"1/4 BSP	1"1/4 BSP	104	54	46	26
S122024	1"1/2 BSP	1"1/2 BSP	1"1/2 BSP	120	60	50	32
S122032	2" BSP	2" BSP	2" BSP	149,5	75,5	64	46