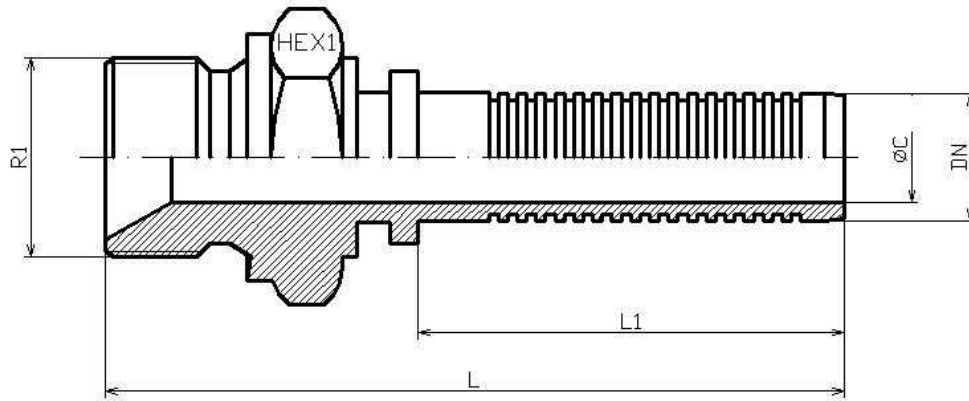


BSP Male parallel 60° cone 700 bar

Stainless Steel AISI 316-L

1/1

Part n°	DN	R1	L	L1	HEX 1	ØC
Z741120404	1/4"	1/4" BSP	59,5	34,5	19	4
Z741120606	3/8"	3/8" BSP	70,5	41,5	22	7
Z741120808	1/2"	1/2" BSP	78	45	27	9,5