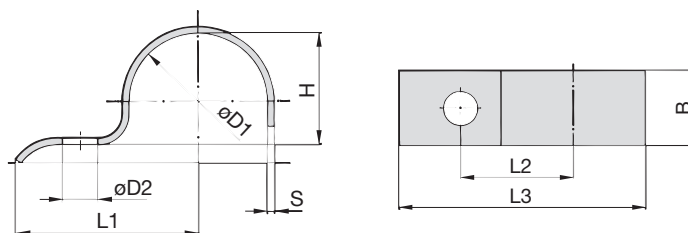


## Light Saddle with Tension Clearance (DIN 1596) Single-Bolt Design



### Ordering Codes

#### Light Saddle

**\*DIN1596-\*7-\*W66**

|   |                |
|---|----------------|
| * Light Saddle to DIN 1596                          | <b>DIN1596</b> |
| * STAUFF Group (Ø D1)                               | <b>7</b>       |
| * Material code                                     | <b>W1</b>      |
| Carbon Steel, uncoated                              |                |
| Carbon Steel, zinc-plated and thick-film passivated | <b>W66</b>     |
| Stainless Steel V4A                                 |                |
| 1.4401 / 1.4571 (AISI 316 / 316 Ti)                 | <b>W5</b>      |

### Applications

- Installation of pipes, tubes, poles and other round components directly on the substrate (floor, wall or ceiling)

| STAUFF Group | Diameter Range |               | Dimensions (mm/in) |      |       |      |     |      |     |
|--------------|----------------|---------------|--------------------|------|-------|------|-----|------|-----|
|              | Ø D1 (mm)      | (in)          | L1                 | L2   | L3    | H    | D2  | B    | S   |
| 7            | 5,5 ... 7      | .22 ... .28   | 26                 | 14   | 31,5  | 5    | 6,6 | 16   | 2   |
|              |                |               | 1.02               | .55  | 1.24  | .20  | .26 | .63  | .08 |
| 9            | 7 ... 9        | .28 ... .35   | 28                 | 16   | 34,5  | 6    | 6,6 | 16   | 2   |
|              |                |               | 1.10               | .63  | 1.36  | .24  | .26 | .63  | .08 |
| 13           | 9,5 ... 13     | .39 ... .51   | 30                 | 18   | 38,5  | 9    | 6,6 | 20   | 2   |
|              |                |               | 1.18               | .71  | 1.52  | .35  | .26 | .79  | .08 |
| 15,5         | 13 ... 15,5    | .51 ... .61   | 32                 | 20   | 41,75 | 12   | 6,6 | 20   | 2   |
|              |                |               | 1.26               | .79  | 1.64  | .47  | .26 | .79  | .08 |
| 19           | 15,5 ... 19    | .61 ... .75   | 34                 | 22   | 45,5  | 15   | 6,6 | 20   | 2   |
|              |                |               | 1.34               | .87  | 1.79  | .59  | .26 | .79  | .08 |
| 23           | 20 ... 23      | .79 ... .91   | 43                 | 28   | 57,5  | 19   | 9   | 25   | 3   |
|              |                |               | 1.69               | 1.10 | 2.26  | .75  | .35 | .98  | .12 |
| 26           | 23 ... 26      | .91 ... 1.02  | 44                 | 29   | 60    | 22   | 9   | 25   | 3   |
|              |                |               | 1.73               | 1.14 | 2.36  | .87  | .35 | .98  | .12 |
| 28,5         | 26 ... 28,5    | 1.02 ... 1.12 | 47                 | 32   | 64,25 | 24   | 9   | 25   | 3   |
|              |                |               | 1.85               | 1.26 | 2.53  | .94  | .35 | .98  | .12 |
| 31           | 28,5 ... 31    | 1.12 ... 1.22 | 47                 | 32   | 65,5  | 27   | 9   | 25   | 3   |
|              |                |               | 1.85               | 1.26 | 2.58  | 1.06 | .35 | .98  | .12 |
| 33 *         | 31 ... 33      | 1.22 ... 1.30 | 56                 | 36   | 75,5  | 29   | 9   | 25   | 3   |
|              |                |               | 2.20               | 1.42 | 2.97  | 1.14 | .35 | .98  | .12 |
| 36           | 33 ... 36      | 1.30 ... 1.42 | 57                 | 40   | 78    | 32   | 11  | 30   | 3   |
|              |                |               | 2.24               | 1.57 | 3.07  | 1.26 | .43 | 1.18 | .12 |
| 39           | 36 ... 39      | 1.42 ... 1.54 | 59                 | 42   | 81,5  | 34   | 11  | 30   | 3   |
|              |                |               | 2.32               | 1.65 | 3.21  | 1.34 | .43 | 1.18 | .12 |
| 43           | 39 ... 43      | 1.54 ... 1.69 | 61                 | 44   | 85,5  | 38   | 11  | 30   | 3   |
|              |                |               | 2.40               | 1.73 | 3.37  | 1.50 | .43 | 1.18 | .12 |
| 46           | 43 ... 46      | 1.69 ... 1.81 | 62                 | 45   | 88    | 41   | 11  | 30   | 3   |
|              |                |               | 2.44               | 1.77 | 3.46  | 1.61 | .43 | 1.18 | .12 |
| 49           | 46 ... 49      | 1.81 ... 1.93 | 67                 | 48   | 95,5  | 44   | 14  | 40   | 4   |
|              |                |               | 2.64               | 1.89 | 3.76  | 1.73 | .55 | 1.57 | .16 |
| 52 *         | 49 ... 52      | 1.93 ... 2.05 | 72                 | 53   | 102   | 47   | 14  | 40   | 4   |
|              |                |               | 2.83               | 2.09 | 4.02  | 1.85 | .55 | 1.57 | .16 |
| 58           | 53 ... 58      | 2.09 ... 2.28 | 76                 | 55   | 107   | 52   | 14  | 40   | 4   |
|              |                |               | 2.99               | 2.17 | 4.21  | 2.05 | .55 | 1.57 | .16 |
| 61           | 58 ... 61      | 2.28 ... 2.40 | 77                 | 58   | 111,5 | 56   | 14  | 40   | 4   |
|              |                |               | 3.03               | 2.28 | 4.39  | 2.20 | .55 | 1.57 | .16 |

\* Similar to DIN 1596.

Alternative materials and surface finishings are available upon request. Contact STAUFF for further information.