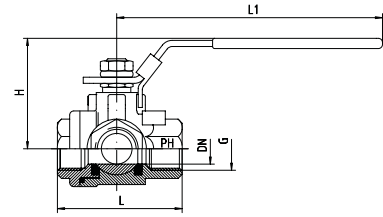




Rohrinnengewinde: DIN / ISO 228  
3-Wege - 1.4408  
T-Bohrung  
Dichtungen: Kugel + Schaltwelle = PTFE  
(-20°C bis + 180°C)  
Bei höheren Temperaturen beachten Sie bitte das Druck- / Temperaturdiagramm.

BSP Female Thread: DIN / ISO 228  
3-Way - AISI 316  
T-Port  
Sealings: Ball + Stem = PTFE  
(-20°C to +180°C)  
At higher temperatures please note the pressure / temperature diagram.



DN	Größe	Druck	Ca. Maße mm				Bemerkungen	Bestellzeichen
	Size		Pressure	Approx. Dimensions mm				
		PB	G	H	L	L1		Order-Code
11,5	1/4"	63	1/4"	50,0	68,0	97,0		KH-G 1/4"-3 W-T
12,5	3/8"	63	3/8"	50,0	68,0	97,0		KH-G 3/8"-3 W-T
12,5	1/2"	63	1/2"	50,0	68,0	97,0		KH-G 1/2"-3 W-T
15,0	3/4"	63	3/4"	64,0	83,0	127,0		KH-G 3/4"-3 W-T
20,0	1"	63	1"	66,0	90,0	127,0		KH-G 1"-3 W-T
25,0	1 1/4"	63	1 1/4"	80,0	97,0	145,0		KH-G 1 1/4"-3 W-T
32,0	1 1/2"	63	1 1/2"	83,0	114,0	145,0		KH-G 1 1/2"-3 W-T
40,0	2"	63	2"	96,0	142,0	205,0		KH-G 2"-3 W-T

