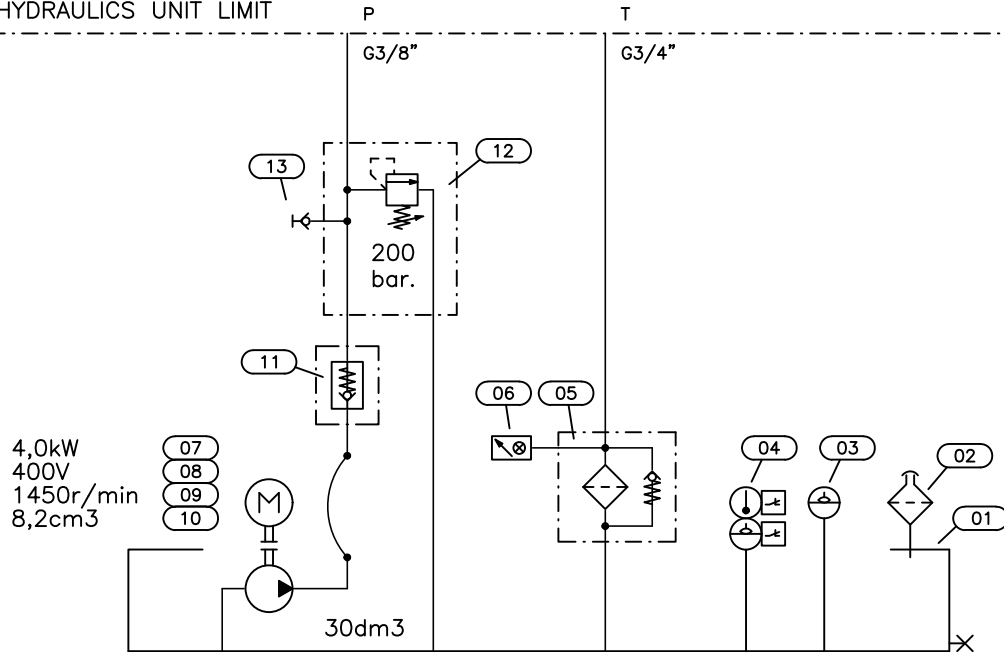


HYDRAULICS UNIT LIMIT



| POS | QTY | COMPONENT DESCRIPTION | TYPE |
|-----|-----|---------------------------------|---|
| 01 | 1 | RESERVOIR | S30 |
| 02 | 1 | RESERVOIR-BREATHER FILTER | FSB/25 |
| 03 | 1 | SIGHT GLASS (Termometer) | XL/05T/M12 |
| 04 | 1 | FLUID-LEVEL INDICATOR | LM1FPA200NCT70NC |
| 05 | 1 | RETURN FILTER WITH BYPASS VALVE | MPF1002AG2A10HBP01 |
| 06 | 1 | OPTICAL CLOGGING INDICATOR | BVA14P01 |
| 07 | 1 | ELECTRIC MOTOR | 3TA112M-4 (4,0kW 400V 1450r/min B35) |
| 08 | 1 | BELLHOUSING | LMG250MFS2004S |
| 09 | 1 | COUPLING | AKG07FS200Z |
| 10 | 1 | GEAR PUMP | HYPAC08E20T2B2/2S1NS (8,2cm³) |
| 11 | 1 | NON-RETURN VALVE WITH SPRING | VU-38 |
| 12 | 1 | PRESSURE-RELIEF VALVE | VMP3/8/250 |
| 13 | 1 | TAKE OFF POINT R1/4" | 620.01.204.21 |

| | | | |
|---------------------------------------|----------------|---------|--------------------|
| Customer | | Project | |
| Hydraulics diagram 30P-4.0-8.2-200 | | | Date 13.03.2024 |
| | | | Drawer A.L. |
| Diag. n:o HTR4025-30P | Work n:o | | |
| Attachments | Qty Weight kg. | | |