

# **BARB CONNECTORS BRASS**

**PLUS**

**SUITABLE FOR COMPRESSED AIR  
AND FLUIDS**

**WIDE RANGE AVAILABLE TO MEET  
MULTIPLE NEEDS**

**DESIGNED TO GUARANTEE A GOOD  
MECHANICAL RESISTANCE**

**USABLE WITH MANY PLASTIC AND  
RUBBER TUBES**

**UTILIZE WITH ZINC-PLATED STEEL  
CLAMPS TO EFFECTIVELY SECURE THE  
TUBE**





p. 212 / **1165**



p. 212 / **1167**



p. 213 / **1169**



p. 214 / **1170**



p. 214 / **1171**



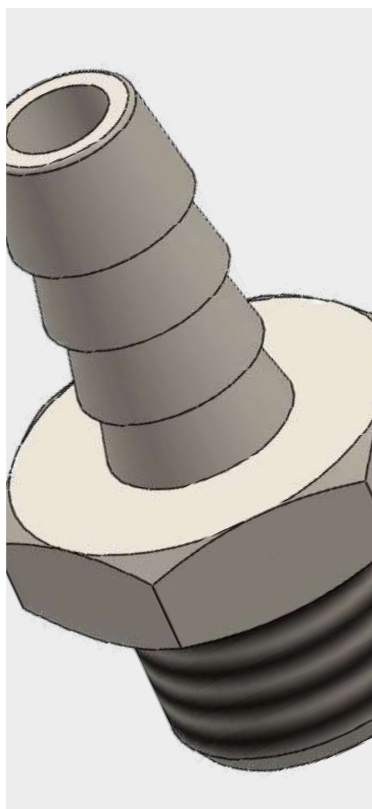
p. 215 / **1174**



p. 215 / **1172**



p. 215 / **1173**



-20°C ÷ 100°C with NBR o-ring  
 -15°C ÷ 200°C with Viton o-ring  
 The working temperature is determined by the properties of the tube used



**Working pressure:**  
 18 Bar  
 60 Bar (max working pressure)  
 The working pressure is determined by the properties of the tube used



Compressed air, water and fluids suitable with construction materials



- Taper gas BSPT ISO 7 from R1/8" to R1"  
 - Parallel gas BSPP ISO 228 from G1/8" to G3/4"  
 - Metric ISO 262 M5



All tubes compatible with the internal diameter, to be used only with suitable clamps



**Body:** Nickel-plated brass  
 Turning: UNI EN 12164 CW 614N  
 Hot forging & machining: UNI EN 12165 CW 617N  
 O-ring: NBR 70

#### AVAILABILITY:

- Available on request and with minimum quantity in yellow brass
- Available on request with Viton o-ring



Products in compliance with EC Regulation 1907/2006



Products in compliance with the directive EU 2015/863

#### DIAMETER OF TH BARB BARB CONNECTORS - BRASS

ØD (mm)	Ø4,5	Ø6	Ø7	Ø8	Ø9	Ø10	Ø12	Ø14	Ø17	Ø18	Ø19	Ø21	Ø25	Ø27
ØB (mm)	4,8	6,3	7,3	8,3	9,3	10,3	12,3	14,3	17,3	18,3	19,3	21,3	25,3	27,3



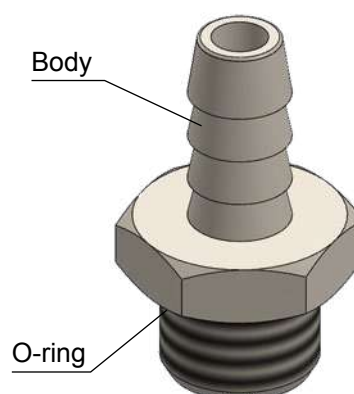
#### TIGHTENING TORQUE TAPER GAS BSPT ISO 7

THREAD	1/8"	1/4"	3/8"	1/2"	3/4"	1"
Nm	8	12	14	16	18	20

#### TIGHTENING TORQUE PARALLEL GAS BSPP ISO 228 & METRIC ISO 262

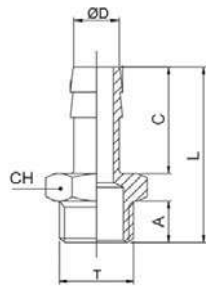
THREAD	M5x0,8	1/8"	1/4"	3/8"	1/2"	3/4"
Nm	0,8	5	8	10	12	14

#### CONSTRUCTION DETAILS



## 1165

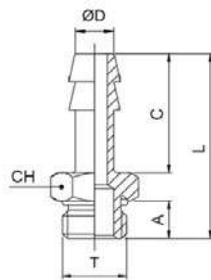
### Male barb connector BSPP & metric thread



CODE	T	ØD	A	C	L	CH	g
1165TRM545	M5x0,8	4,5	4,0	15,0	22,5	8	6,0
1165TR186	G 1/8"	6	6,0	19,0	29,5	12	8,0
1165TR146	G 1/4"	6	8,0	19,0	32,0	14	12,0
1165TR187	G 1/8"	7	6,0	19,0	29,5	12	8,0
1165TR147	G 1/4"	7	8,0	19,0	32,0	14	14,0
1165TR188	G 1/8"	8	6,0	19,0	29,5	12	8,0
1165TR148	G 1/4"	8	8,0	19,0	32,0	14	14,0
1165TR388	G 3/8"	8	9,0	19,0	33,0	19	22,0
1165TR189	G 1/8"	9	6,0	19,0	29,5	12	10,0
1165TR149	G 1/4"	9	8,0	19,0	32,0	14	14,0
1165TR389	G 3/8"	9	9,0	19,0	33,0	19	22,0
1165TR1810	G 1/8"	10	6,0	20,0	30,5	12	10,0
1165TR1410	G 1/4"	10	8,0	20,0	33,0	14	14,0
1165TR3810	G 3/8"	10	9,0	20,0	34,0	19	23,0
1165TR1412	G 1/4"	12	8,0	20,0	33,0	14	16,0
1165TR3812	G 3/8"	12	9,0	20,0	34,0	19	24,0
1165TR1212	G 1/2"	12	10,0	20,0	35,5	22	32,0
1165TR3814	G 3/8"	14	9,0	22,0	36,0	19	26,0
1165TR1214	G 1/2"	14	10,0	22,0	37,5	22	34,0
1165TR3817	G 3/8"	17	9,0	24,0	38,0	19	30,0
1165TR1217	G 1/2"	17	10,0	24,0	39,5	22	38,0
1165TR3418	G 3/4"	18	11,0	24,0	41,5	30	58,0
1165TR1220	G 1/2"	20	10,0	24,0	39,5	22	40,0
1165TR3420	G 3/4"	20	11,0	24,0	41,5	30	60,0

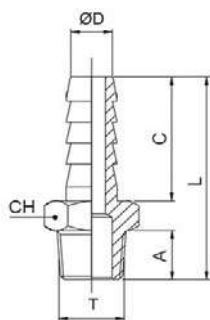
## 1167

### Male barb connector BSPP & metric thread with O-ring



CODE	T	ØD	A	C	L	CH	g
1167TRM545	M5x0,8	4,5	4,5	15,0	23,0	8	6,0
1167TR186	G 1/8"	6	6,5	19,0	30,0	14	10,0
1167TR146	G 1/4"	6	8,0	19,0	32,0	17	16,0
1167TR386	G 3/8"	6	9,0	19,0	33,0	20	-
1167TR187	G 1/8"	7	6,5	19,0	30,0	14	10,0
1167TR147	G 1/4"	7	8,0	19,0	32,0	17	16,0
1167TR188	G 1/8"	8	6,5	19,0	30,0	14	12,0
1167TR148	G 1/4"	8	8,0	19,0	32,0	17	17,0
1167TR388	G 3/8"	8	9,0	19,0	33,0	20	-
1167TR189	G 1/8"	9	6,5	19,0	30,0	14	14,0
1167TR149	G 1/4"	9	8,0	19,0	32,0	17	16,0
1167TR389	G 3/8"	9	9,0	19,0	33,0	20	22,0
1167TR1810	G 1/8"	10	6,5	19,0	30,0	14	-
1167TR1410	G 1/4"	10	8,0	19,0	32,0	17	-
1167TR1412	G 1/4"	12	8,0	20,0	33,0	17	18,0
1167TR3812	G 3/8"	12	9,0	20,0	34,0	20	24,0
1167TR1212	G 1/2"	12	10,0	20,0	35,5	24	35,0
1167TR3817	G 3/8"	17	9,0	24,0	38,0	20	30,0
1167TR1217	G 1/2"	17	10,0	24,0	39,5	24	42,0



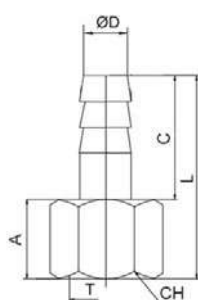
**1169****Male barb connector BSPT thread**

CODE	T	ØD	A	C	L	CH	g
1169TR186	R 1/8"	6	8,0	19,0	31,5	12	8,0
1169TR146	R 1/4"	6	11,0	19,0	35,0	14	14,0
1169TR187	R 1/8"	7	8,0	19,0	31,5	12	10,0
1169TR147	R 1/4"	7	11,0	19,0	35,0	14	14,0
1169TR188	R 1/8"	8	8,0	19,0	31,5	12	10,0
1169TR148	R 1/4"	8	11,0	19,0	35,0	14	14,0
1169TR189	R 1/8"	9	8,0	19,0	31,5	12	12,0
1169TR149	R 1/4"	9	11,0	19,0	35,0	14	16,0
1169TR389	R 3/8"	9	11,5	19,0	35,5	17	20,0
1169TR129	R 1/2"	9	14,0	19,0	38,5	22	32,0
1169TR1810	R 1/8"	10	8,0	20,0	32,5	12	10,0
1169TR1410	R 1/4"	10	11,0	20,0	36,0	14	16,0
1169TR3810	R 3/8"	10	11,5	20,0	36,5	17	22,0
1169TR1210	R 1/2"	10	14,0	20,0	39,5	22	32,0
1169TR1412	R 1/4"	12	11,0	20,0	36,0	14	16,0
1169TR3812	R 3/8"	12	11,5	20,0	36,5	17	22,0
1169TR1212	R 1/2"	12	14,0	20,0	39,5	22	34,0
1169TR3814	R 3/8"	14	11,5	22,0	38,5	17	24,0
1169TR1214	R 1/2"	14	14,0	22,0	41,5	22	36,0
1169TR3816	R 3/8"	16	11,5	22,0	38,5	17	26,0
1169TR1216	R 1/2"	16	14,0	22,0	41,5	22	36,0
1169TR3416	R 3/4"	16	16,5	22,0	45,0	27	58,0
1169TR3817	R 3/8"	17	11,5	24,0	40,5	18	30,0
1169TR1217	R 1/2"	17	14,0	24,0	43,5	22	40,0
1169TR3818	R 3/8"	18	11,5	24,0	40,5	19	34,0
1169TR1218	R 1/2"	18	14,0	24,0	43,5	22	44,0
1169TR3418	R 3/4"	18	16,5	24,0	47,0	27	62,0
1169TR3820	R 3/8"	20	11,5	24,0	41,0	22	40,0
1169TR1220	R 1/2"	20	14,0	24,0	43,5	22	42,0
1169TR3420	R 3/4"	20	16,5	24,0	46,5	27	60,0
1169TR1221	R 1/2"	21	14,0	34,0	53,5	22	-
1169TR3421	R 3/4"	21	16,5	34,0	56,5	27	-
1169TR121	R 1"	21	19,0	34,0	60,0	34	-
1169TR3425	R 3/4"	25	16,5	30,0	53,0	27	76,0
1169TR125	R 1"	25	19,0	30,0	56,0	34	114,0
1169TR3427	R 3/4"	27	16,5	38,0	60,5	32	-
1169TR127	R 1"	27	19,0	38,0	64,0	34	-



## 1170

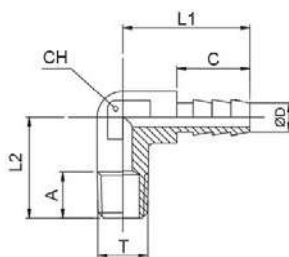
### Female barb connector BSPP thread



CODE	T	ØD	A	C	L	CH	g
1170TR186	G 1/8"	6	8,0	19,0	28,5	12	7,5
1170TR146	G 1/4"	6	11,0	19,0	31,5	15	-
1170TR187	G 1/8"	7	8,0	19,0	28,5	12	9,0
1170TR147	G 1/4"	7	11,0	19,0	31,5	15	21,0
1170TR188	G 1/8"	8	8,0	19,0	28,5	12	8,0
1170TR148	G 1/4"	8	11,0	19,0	31,5	15	19,0
1170TR189	G 1/8"	9	8,0	19,0	28,5	12	9,0
1170TR149	G 1/4"	9	11,0	19,0	31,5	15	20,0
1170TR389	G 3/8"	9	11,5	19,0	32,0	19	-
1170TR1810	G 1/8"	10	8,0	20,0	29,5	12	-
1170TR1410	G 1/4"	10	11,0	20,0	32,5	15	12,5
1170TR3810	G 3/8"	10	11,5	20,0	33,0	19	17,0
1170TR1210	G 1/2"	10	14,0	20,0	36,0	24	-
1170TR1412	G 1/4"	12	11,0	20,0	32,5	15	22,0
1170TR3812	G 3/8"	12	11,5	20,0	33,0	19	18,0
1170TR1212	G 1/2"	12	14,0	20,0	36,0	24	33,0
1170TR3814	G 3/8"	14	11,5	22,0	35,0	19	-
1170TR1214	G 1/2"	14	14,0	22,0	38,0	24	35,5
1170TR3816	G 3/8"	16	11,5	22,0	35,0	19	-
1170TR1216	G 1/2"	16	14,0	22,0	38,0	24	-
1170TR3817	G 3/8"	17	11,5	24,0	37,0	19	-
1170TR1217	G 1/2"	17	14,0	24,0	40,0	24	-
1170TR1218	G 1/2"	18	14,0	24,0	40,0	24	-
1170TR3418	G 3/4"	18	15,0	24,0	41,5	29	-
1170TR3420	G 3/4"	20	15,0	24,0	41,5	29	-
1170TR3425	G 3/4"	25	15,0	30,0	47,5	29	-

## 1171

### Male elbow barb connector BSPT thread

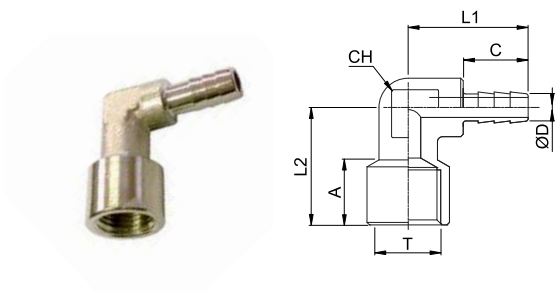


CODE	T	ØD	A	C	L1	L2	CH	g
1171TR186185	R 1/8"	6	8,0	14,0	22,5	18,5	8	10,0
1171TR18623	R 1/8"	6	10,0	14,0	22,5	23,0	8	12,0
1171TR14623	R 1/4"	6	11,0	14,0	23,0	23,0	9	16,0
1171TR187185	R 1/8"	7	8,0	14,0	22,5	18,5	8	10,0
1171TR18723	R 1/8"	7	10,0	14,0	22,5	23,0	8	10,0
1171TR14723	R 1/4"	7	11,0	14,0	23,0	23,0	9	16,0
1171TR18819	R 1/8"	8	10,0	14,0	22,5	19,0	10	-



1174

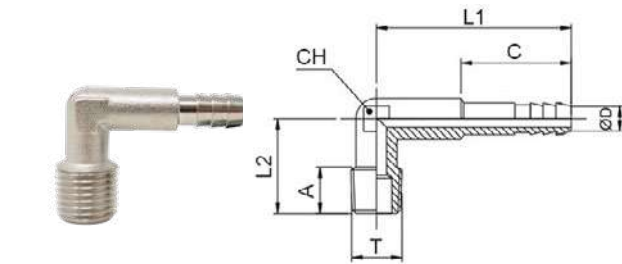
Female elbow barb connector BSPP thread



CODE	T	ØD	A	C	L1	L2	CH	g
1174TR186	G 1/8"	6	8,0	13,0	22,0	22,0	9	-
1174TR146	G 1/4"	6	11,0	13,0	24,0	23,5	13	-
1174TR187	G 1/8"	7	8,0	13,0	24,0	22,0	9	-
1174TR147	G 1/4"	7	11,0	13,0	24,0	23,5	13	-

1172

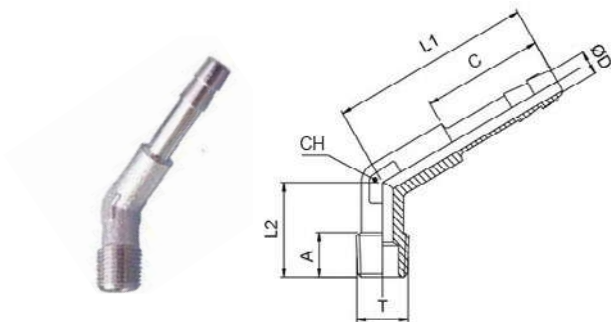
Long series elbow barb connector BSPT thread



CODE	T	ØD	A	C	L1	L2	CH	g
1172TR186325	R 1/8"	6	10,0	14,0	32,5	22,0	9	18,0
1172TR18638	R 1/8"	6	8,0	22,0	38,0	18,5	8	14,0
1172TR146325	R 1/4"	6	11,0	14,0	32,5	23,0	9	20,0
1172TR187325	R 1/8"	7	11,0	14,0	32,5	22,0	9	16,0
1172TR18738	R 1/8"	7	8,0	22,0	38,0	18,5	8	14,0
1172TR147325	R 1/4"	7	11,0	14,0	32,5	23,0	9	20,0

1173

Long serie elbow 120° barb connector BSPT thread



CODE	T	ØD	A	C	L1	L2	CH	g
1173TR186	R 1/8"	6	8,0	23,0	38,0	18,5	8	14,0
1173TR187	R 1/8"	7	8,0	23,0	38,0	18,5	8	12,0

