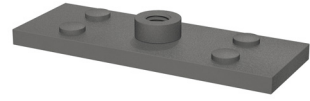
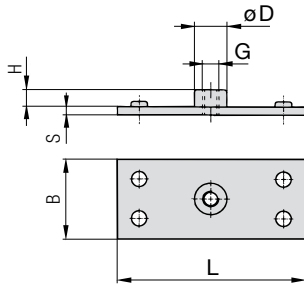


Single Weld Plate
Type SP


C

Group STAUFF	DIN	Dimensions (mm/in)						Ordering Codes (Standard Options)	
		L	B	S	H	ØD	Thread G		
1D	1	37	30	3	6,5	12	M6	SP-1D-M-W2	
		1.46	1.18	.12	.26	.47	1/4-20 UNC	SP-1D-U-W2	
2D	2	55	30	5	6	14	M8	SP-2D-M-W2	
		2.17	1.18	.20	.24	.55	5/16-18 UNC	SP-2D-U-W2	
3D	3	70	30	5	6	14	M8	SP-3D-M-W2	
		2.76	1.18	.20	.24	.55	5/16-18 UNC	SP-3D-U-W2	
4D	4	85	30	5	6	14	M8	SP-4D-M-W2	
		3.35	1.18	.20	.24	.55	5/16-18 UNC	SP-4D-U-W2	
5D	5	110	30	5	6	14	M8	SP-5D-M-W2	
		4.33	1.18	.20	.24	.55	5/16-18 UNC	SP-5D-U-W2	

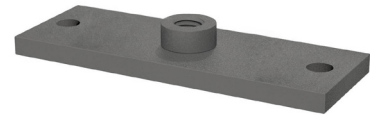
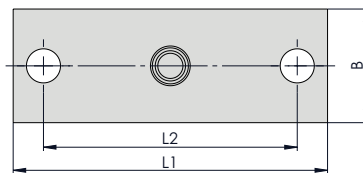
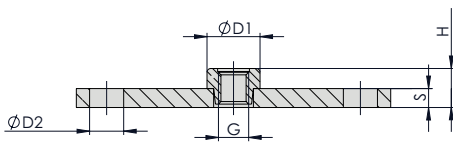
Ordering Codes

Weld Plate

***SP-*1D-*M-*W2**

* Single Weld Plate		SP
* STAUFF Group		1D
* Thread code	Metric ISO thread	M
	Unified coarse (UNC) thread	U
* Material code	Carbon Steel, phosphated	W2
	Carbon Steel, zinc/nickel-plated	W3
	Stainless Steel V2A	W4
	1.4301 / 1.4305 (AISI 304 / 303)	W4
	Stainless Steel V4A	W5
	1.4401 / 1.4571 (AISI 316 / 316 Ti)	W5

All threaded parts are available with Metric ISO thread or unified coarse (UNC) thread according to dimension table.
Alternative materials and surface finishings are available upon request. Contact STAUFF for further information.

 Elongated Weld Plate
Type SPV


Group STAUFF	DIN	Dimensions (mm/in)								Ordering Codes (Standard Options)	
		Thread G	L1	L2	B	S	H	ØD1	ØD2		
1D	1	M6	64	50	30	3	8,3	11,8	6,5	SPV-1D-M-W3	
		1/4-20 UNC	2.52	1.97	1.18	.12	.33	.46	.26	SPV-1D-U-W3	
2D	2	M8	83	67	30	5	10,3	14	9	SPV-2D-M-W3	
		5/16-18 UNC	3.27	2.64	1.18	.20	.41	.55	.35	SPV-2D-U-W3	
3D	3	M8	97	81	30	5	10,3	14	9	SPV-3D-M-W3	
		5/16-18 UNC	3.82	3.19	1.18	.20	.41	.55	.35	SPV-3D-U-W3	
4D	4	M8	110	94	30	5	10,3	14	9	SPV-4D-M-W3	
		5/16-18 UNC	4.33	3.70	1.18	.20	.41	.55	.35	SPV-4D-U-W3	
5D	5	M8	136	120	30	5	10,3	14	9	SPV-5D-M-W3	
		5/16-18 UNC	5.35	4.72	1.18	.20	.41	.55	.35	SPV-5D-U-W3	

Ordering Codes

Weld Plate

***SPV-*1D-*M-*W2**

* Elongated Weld Plate		SPV
* STAUFF Group		1D
* Thread code	Metric ISO thread	M
	Unified coarse (UNC) thread	U
* Material code	Carbon Steel, zinc/nickel-plated	W3
	Stainless Steel V4A	W5
	1.4401 / 1.4571 (AISI 316 / 316 Ti)	W5

All threaded parts are available with Metric ISO thread or unified coarse (UNC) thread according to dimension table.
Alternative materials and surface finishings are available upon request. Contact STAUFF for further information.